

SKU EXPANSIONS

24" DEEP WALL REFRIGERATOR CABINETS

NEW 30" wide refrigerator cabinets offer valuable storage above the most popular refrigerator size!

New SKUs not available on Classic Bark or Spectra Snow.

Wall	30" Wide	36" Wide	39" Wide
12" High	NEW	✓	
15" High	NEW		
18" High	NEW	✓	✓
21" High	NEW	✓	
24" High	NEW	✓	



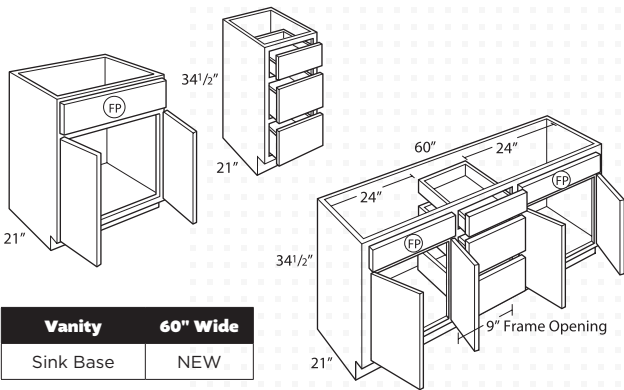
EXPANDED VANITY OPTIONS TO FIT EVERY SPACE

Now offering more vanity sizes in 3-inch increments to suit a wider range of bathroom layouts and styles.

New SKUs not available on Classic Bark or Spectra Snow.

Vanity	12" Wide	15" Wide	18" Wide	21" Wide	24" Wide
3-Drawer Base	✓	✓	✓	NEW	NEW

Vanity	24" Wide	27" Wide	30" Wide	33" Wide	36" Wide
Sink Base	✓	✓	✓	NEW	✓



ADDITIONAL MOULDINGS

Top it off with new moulding options that are sure to fill gaps, extend cabinet height, create transitions and customize designs!

Tall Crown Moulding MTCROWN8
Shaker Moulding BBMSH8

One 8' section
New SKUs not available on Bark and Graphite.



MANTRA™

Your MANTRA™ user experience is our priority. The MANTRA Pricing and Specification Guide features hyperlink navigation, so you can quickly locate product specific to your project.

- The Indexes contain links to each unique product.
- The main Table of Contents contains links to the beginning of each section.
- The secondary Table of Contents at the beginning of each section contains links to product subcategories.
- Return to the beginning of each section by clicking on the title inside the black tab.
- Return to the main Table of Contents at any time by clicking on MANTRA™ Cabinets at the bottom of each page.

If your preferred PDF search method is holding the Control and F keys and populating the search box with item codes or words, we've got you covered.

No matter how you choose to use this resource, we're glad you're specifying MANTRA!

TABLE OF CONTENTS

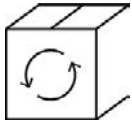
Index by Description	2
Index by Code	3
Customer Experience	4
How To Order Mantra	5
Door Styles	6-8
Product Specifications	9-16
Wall Cabinets	17-42
Base Cabinets	43-53
Universal Design Cabinets	54-59
Tall Cabinets	60-68
Vanity Cabinets	69-74
Fillers	75-77
Skins	78-79
Panels	80-82
Mouldings	83-91
Accessories	92-99

Description	Code	Page	Description	Code	Page
2 Drawer Base	2DB	46	Mini Touch-up Kit	MTUK	99
3 Drawer Base	3DB	47	Oven 3 Drawers	OC3D33__24	67
3" Filler	F3__ , TF396FH	76	Roll Tray Kits	RT__WD	95
6" Filler	F6__ , TF696FH	77	Sink Base	SB	49
Accent Moulding, Flat Scribe	SM8	86	Stain & Paint	PAINTQUART, SSC, STAINQRTKIT	99
Accent Moulding, Light Baffle	LB2	87	Starter Moulding, Shaker	STRS8	86
Accent Moulding, Small Scribe	SCRIBE8	87	Straight Valance / Baseboard	VV__	91
Angled Corner Sink Front	ACSF	50	Super Lazy Susan	SLS36R	52
Angled Corner Sink Front Bottom	ACSFB	50	Tall End Panels	TEP2484WD, TEP2496WD, TEP3096WD	80
Base and Tall Panels with Filler Attached	BEPF1.5WD, BEPF3WD, TEP2496F15WD, TEP3096F15WD	81	Tilt-out Trays	TOT__	96
Base and Wall End Panels	BEPWD, WEP12330WD	80	Toe Moulding Baseboard, Shaker	BBMSH8	89
Base Built-in Microwave with Drawer	BBMWD30	48	Toeboard	TB8WD14	90
Base Corner Single Door	BC__S	51	Toekick Cap	TKC	90
Base Double Door	B	45	Touch-up Kit	TUK	99
Base Double Door - Full Height	B__FH	46	Universal Design, 3 Drawer Base	3DB__32.5	56
Base Easy Reach	BER__R	52	Universal Design, Base Corner Single Door	BC__32.5S	58
Base End Decorative Door Panel Kit	BEDSD	82	Universal Design, Base Double Door	B__32.5	56
Base Lazy Susan	BLS36R	53	Universal Design, Base Built-in Microwave with Drawer	BBMWD3032.5	57
Base Single Door	B__R	44	Universal Design, Base Single Door	B__32.5R	55
Base Single Door - Full Height	B__FHR	45	Universal Design, Base Sink Removable	BSR__32.5	57
Base Wastebasket	BWB	48	Universal Design, Sink Base	SB__32.5	49
Classic Square Wood Hood	WHS36	93	Universal Design, Super Lazy Susan	SLS3632.5R	59
Classic Wood Hood Chimney	WHC36	93	Universal Design, Vanity Base Sink Removable	VBSR__32.521	59
Corner Moulding, Inside Corner	ICM8	88	Utility Double Door	U24__24	63
Corner Moulding, Outside Corner	OCM8	88	Utility Double Door	U30__24	65
Corner Moulding, Quarter Round	QRM	89	Utility Single Door	U18__24R	61
Country Sink Base	CNTYSB	49	Vanity Base Single Door	VB__3421R	72
Crown Moulding, Cove Crown	COVECROWN8	84	Vanity Drawer Base	VDB__32.521	70
Crown Moulding, Large Shaker	LSHAKER8	85	Vanity Drawer Base	VDB__3421	73
Crown Moulding, Small Cove Crown	SMCOVECROWN8	84	Vanity Sink Base	VS__32.521	71
Crown Moulding, Solid Wood Crown	SWCRM8	83	Vanity Sink Base	VS__3418	71
Crown Moulding, Solid Wood Large Crown	SWLCRM8	83	Vanity Sink Base	VS__3421	73
Crown Moulding, Tall Crown	MTCROWN8	85	Vanity Sink Drawer Base	2VSD__3421	73
Cutlery Insert Wood Organizer	CIW	98	Vanity Sink Drawer Base	3VSD__3421 L or R	74
Diagonal Wall	DW____R	40	Vanity Sink Three Drawer Base	VSDS603421	74
Diagonal Wall Cut-for-glass	DWCG	41	Wall Corner Double Door	WC____S	38
End Panel Skins	WEPS42LAM14, BEP34.514, TEPS96LAM14	78	Wall Corner Single Door	WC____S	37
Easy Reach Wall Corner	ER__	42	Wall Cut-for-glass	WCG	30
Finished Back Skins	BP4834.514, BP4896LAM14	79	Wall Double Door	W	19
Floating Shelves	FS	97	Wall End Decorative Door Panel Kit	WED	82
Furniture Valance	FV	91	Wall Single Door	W____R	21
Microwave Wall Cabinet	MW3018	93	Wood Hood Blower, 400 CFM	BLOWER400	94

Code	Description	Page	Code	Description	Page
2DB	2 Drawer Base	46	OCM8	Corner Moulding, Outside Corner	88
2VSD_ _3421	Vanity Sink Drawer Base	73	PAINTQUART	Stain & Paint	99
3DB	3 Drawer Base	47	QRM	Corner Moulding, Quarter Round	89
3DB_ _32.5	Universal Design, 3 Drawer Base	56	RT_ _WD	Roll Tray Kits	95
3VSD_ _3421 L or R	Vanity Sink Drawer Base	74	SB	Sink Base	49
ACSF	Angled Corner Sink Front	50	SCRIBE8	Accent Moulding, Small Scribe	87
ACSF8	Angled Corner Sink Front Bottom	50	SLS3632.5R	Universal Design, Super Lazy Susan	59
B	Base Double Door	45	SLS36R	Super Lazy Susan	52
B_ _32.5	Universal Design, Base Double Door	56	SM8	Accent Moulding, Flat Scribe	86
B_ _32.5R	Universal Design, Base Single Door	55	SMCOVECROWN8	Crown Moulding, Small Cove Crown	84
B_ _FH	Base Double Door - Full Height	46	SSC	Stain & Paint	99
B_ _FHR	Base Single Door - Full Height	45	STAINQRTKIT	Stain & Paint	99
B_ _R	Base Single Door	44	STRS8	Starter Moulding, Shaker	86
BBMSH8	Toe Moulding Baseboard, Shaker	89	SWCRM8	Crown Moulding, Solid Wood Crown	83
BC_ _32.5S	Universal Design, Base Corner Single Door	58	SWLCRM8	Crown Moulding, Solid Wood Large Crown	83
BC_ _S	Base Corner Single Door	51	TB8WD14	Toeboard	90
BBMWD30	Base Built-in Microwave with Drawer	48	TEP_ _ _ _F15WD	Tall Panel with Filler Attached	81
BBMWD3032.5	Universal Design, Base Built-in Microwave with Drawer	57	TEP_ _ _ _WD	Tall End Panel	80
BEDSD	Base End Decorative Door Panel Kit	82	TEPS96LAM14	End Panel Skins	78
BEPF1.5WD	Base Panel with Filler Attached	81	TF396FH	3" Filler, Tall	76
BEPF3WD	Base Panel with Filler Attached	81	TF696FH	6" Filler, Tall	77
BEPS34.514	End Panel Skins	78	TOT_ _	Tilt-out Trays	96
BEPWD	Base End Panel	80	TUK	Touch-up Kit	99
BER_ _R	Base Easy Reach	52	TKC	Toe Kick Cap	90
BLOWER400	Wood Hood Blower, 400 CFM	94	U18_ _24R	Utility Single Door	61
BLS36R	Base Lazy Susan	53	U24_ _24	Utility Double Door	63
BP4834.514	Finished Back Skins	79	U30_ _24	Utility Double Door	65
BP4896LAM14	Finished Back Skins	79	VB_ _3421R	Vanity Base Single Door	72
BSR_ _32.5	Universal Design, Base Sink Removable	57	VDB_ _32.521	Vanity Drawer Base	70
BWB	Base Wastebasket	48	VDB_ _3421	Vanity Drawer Base	72
CIW	Cutlery Insert Wood Organizer	98	VS8_ _32.521	Vanity Sink Base	71
CNTYSB	Country Sink Base	49	VS8_ _3418	Vanity Sink Base	71
COVECROWN8	Crown Moulding, Cove Crown	84	VS8_ _3421	Vanity Sink Base	73
DW_ _ _ _ _R	Diagonal Wall	40	VSDS603421	Vanity Sink Three Drawer Base	74
DWCG	Diagonal Wall Cut-for-glass	41	VBSR_ _32.521	Universal Design, Vanity Base Sink Removable	59
ER_ _	Easy Reach Wall Corner	42	VV_ _	Straight Valance / Baseboard	91
F3_ _	3" Filler	76	W	Wall Double Door	19
F6_ _	6" Filler	77	W_ _ _ _R	Wall Single Door	21
FS	Floating Shelves	97	WC_ _ _ _S	Wall Corner Double Door	38
FV	Furniture Valance	91	WC_ _ _ _S	Wall Corner Single Door	37
ICM8	Corner Moulding, Inside Corner	88	WCG	Wall Cut-for-glass	30
LB2	Accent Moulding, Light Baffle	87	WED	Wall End Decorative Door Panel Kit	82
LSHAKER8	Crown Moulding, Large Shaker	85	WEP1230WD	Plywood End Panel	80
MTCROWN8	Crown Moulding, Tall Crown	85	WEPS42LAM14	End Panel Skins	78
MTUK	Mini Touch-up Kit	99	WHC36	Classic Wood Hood Chimney	93
MW3018	Microwave Wall Cabinet	36	WHS36	Classic Square Wood Hood	93
OC3D33_ _24	Oven 3 Drawers	67			

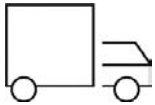
MANTRA™

CABINETS FAST



Cycle Ship

Orders are delivered based on a cycle ship calendar



Truckload

15 business day lead time delivered

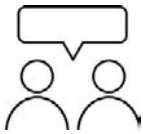
SERVICE MATTERS

As part of the MasterBrand family, we believe our industry leading service will set Mantra apart. This is our pledge to every partner.



Consistent Support

We will be there to help before, during and after the sale.



Personal Support

We will actually listen and work together to support your unique needs.



Proven Commitment

We will use our extensive knowledge and years of experience to help every partner success.

QUALITY ABOVE

We strive to deliver beyond your expectations. That's why popular features like all-plywood construction and soft-close come standard with every Mantra cabinet. Say goodbye to the hassle of upgrades and added costs for your customers.

MANTRA order

All orders will be placed electronically using MasterBrand Connect / Mantra Order:

- Electronic entry and order management
- 2020 Design direct order upload

Mantra Order is an easy-to-navigate order management system that enables users to enter, review, edit, copy, and submit orders intuitively.

Electronic orders are picked eight times daily, Monday through Friday (excluding holidays):

- 6:00, 7:30, 8:30, 9:30, and 10:30 AM EST
- 1:00, 2:30, and 3:30 PM EST

★ Order Acknowledgement will be sent the day after order receipt

★ Delivery notification will be sent to dealer once load is assigned

★ Shipments will be delivered Monday through Friday between the hours of 7:00 AM and 4:00 PM local time

Cycle Ship delivery is available in select locations.

- Mantra Cycle Ship cut off is 10:30 AM EST
- See Mantra Cycle Ship schedule on MasterBrand Connect

Truckload orders ship in 10-15 business days.

Service Policies are posted on MasterBrand Connect.



CLASSIC

Partial Overlay • Shaker • 2 1/4" Rail • Slab drawer front



Bark



Snow



OMNI

Full Overlay • Shaker • 2 1/4" Rail • 5-piece drawer front



Admiral



Beachwood



Graphite



Hammock



Mineral



Rosemary



Snow



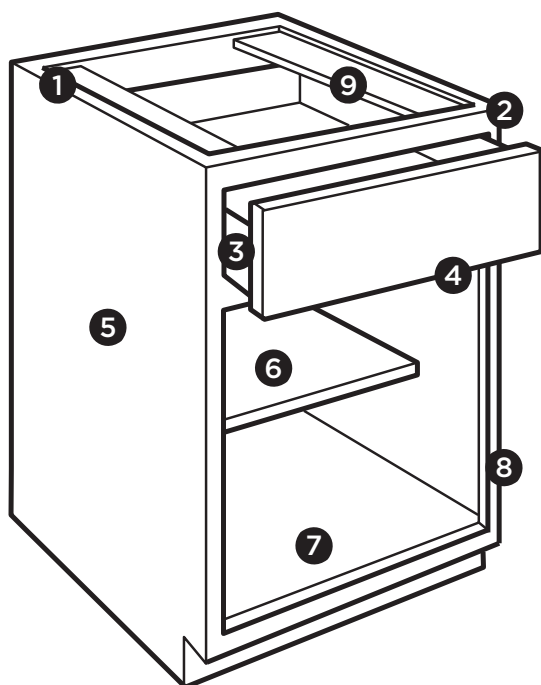
SPECTRA

Full Overlay • Transitional • 3" Rail • 5-piece drawer front



Snow

PRODUCT SPECIFICATIONS



- 1 1/2" Plywood ends, 3/8" top, back, and bottom
- 2 3/4" Hardwood frame, doors and drawer fronts
- 3 5/8" Solid wood dovetail drawer box
- 4 Soft-closing, undermount, full extension drawer guides
- 5 Matching exterior
- 6 3/4" Natural Plywood adjustable shelves
- 7 Natural interior
- 8 Soft-closing, 6-way adjustable hinges
- 9 3/8" Plywood I-beam braces

Cabinet Care and Cleaning Instructions:

<https://masterbrandcabinets.com/care-and-cleaning>

Warranty Information:

<https://mantracabinets.com>











Installation Instructions:

<https://masterbrand.widen.net/s/zvnltkbxh2/mantra-installation-instruction-summary>

Miscellaneous Parts Guide:

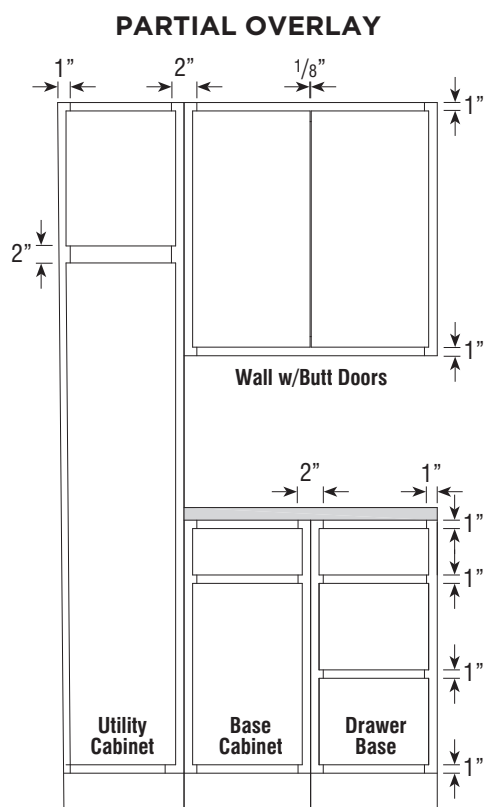
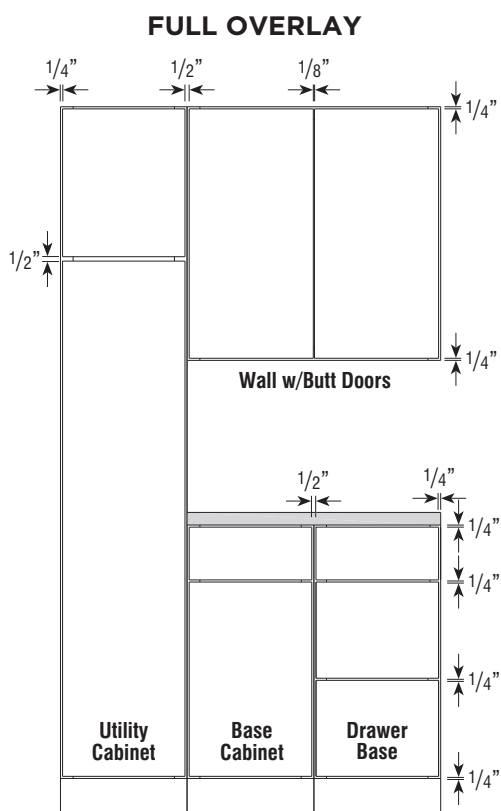
<https://masterbrand.widen.net/s/9djdqz6j8f/mantra-miscellaneous-parts-list---d00485>

PRICE AND STYLE CODE INFORMATION

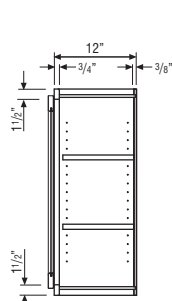
	Price Group 1		Price Group 2							Price Group 3
	Classic Stain	Classic Paint	Omni Paint	Omni Paint	Omni Paint	Omni Stain	Omni Paint	Omni Paint	Omni Stain	Spectra Paint
	Bark	Snow	Snow	Mineral	Graphite	Beachwood	Admiral	Rosemary	Hammock	Snow
										
Style Code	320	321	323	327	328	329	330	335	331	325
Common Style Code -Items with stain/paint price (Ex. Moulding)	310	311	311	312	313	314	315	317	316	311
Miscellaneous Code -Items with one price (Ex. Roll Trays)	300	300	300	300	300	300	300	300	300	300

NOTES

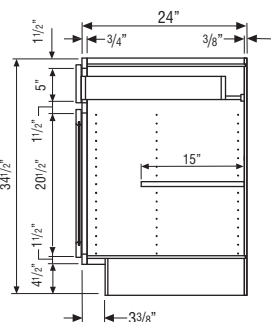
FULL AND PARTIAL OVERLAY SPECIFICATIONS



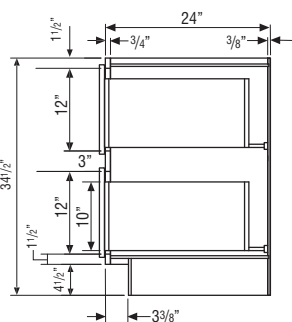
CABINET DIMENSIONS



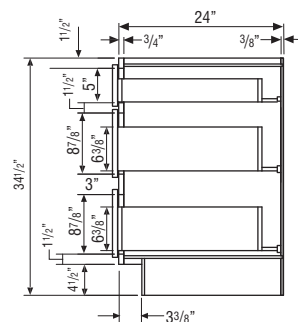
WALL CABINET



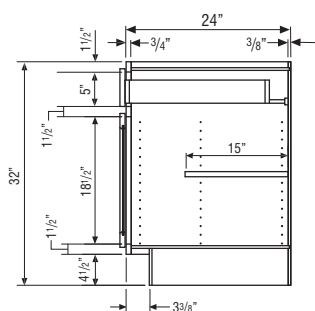
BASE CABINET



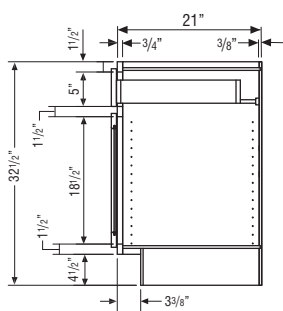
**TWO-DRAWER
BASE CABINET**



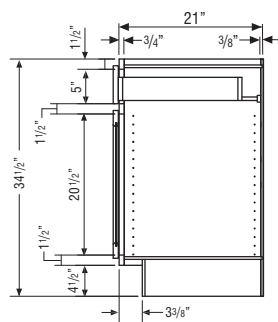
**THREE-DRAWER
BASE CABINET**



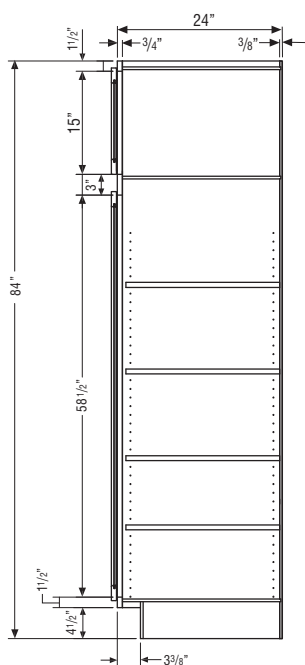
**32 1/2" HIGH
BASE CABINET**



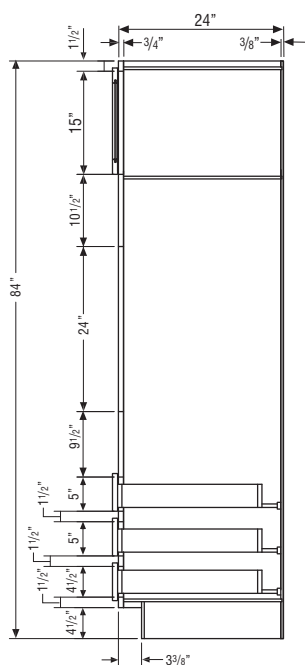
**32 1/2" HIGH
VANITY CABINET**



**34 1/2" HIGH
VANITY CABINET**



UTILITY CABINET

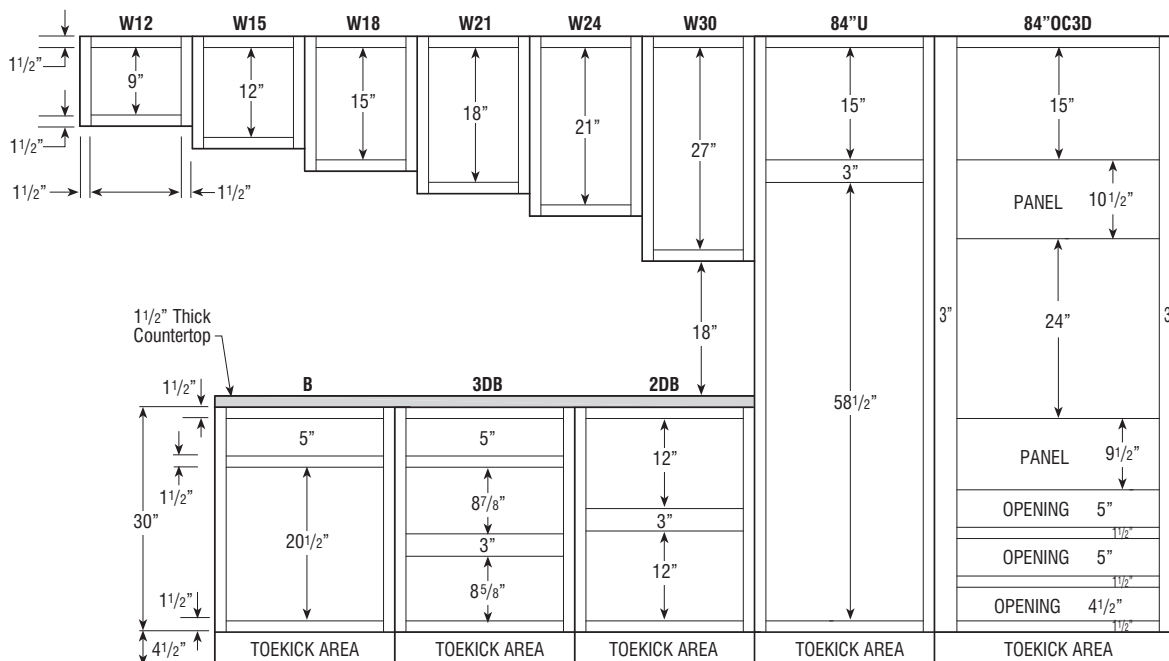


OC3D CABINET

CABINET DIMENSIONS

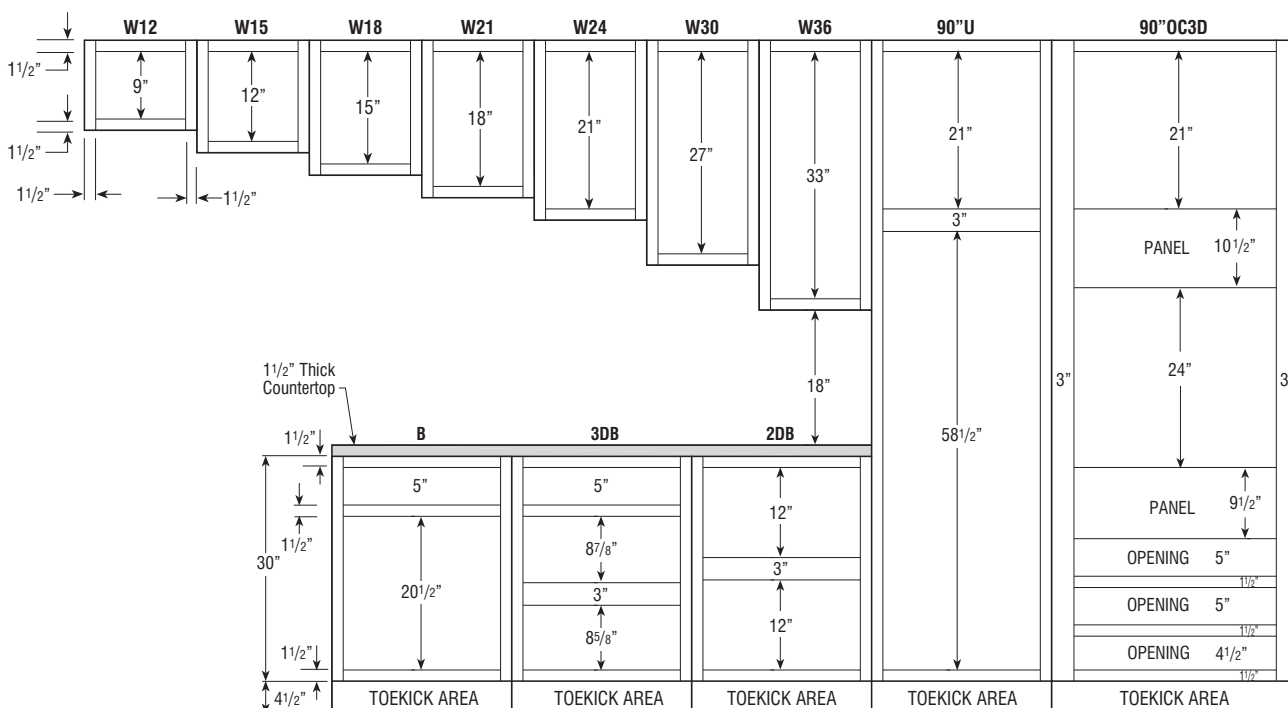
84" HIGH APPLICATION

Number after Wall Cabinet Represents Height of Cabinet



90" HIGH APPLICATION

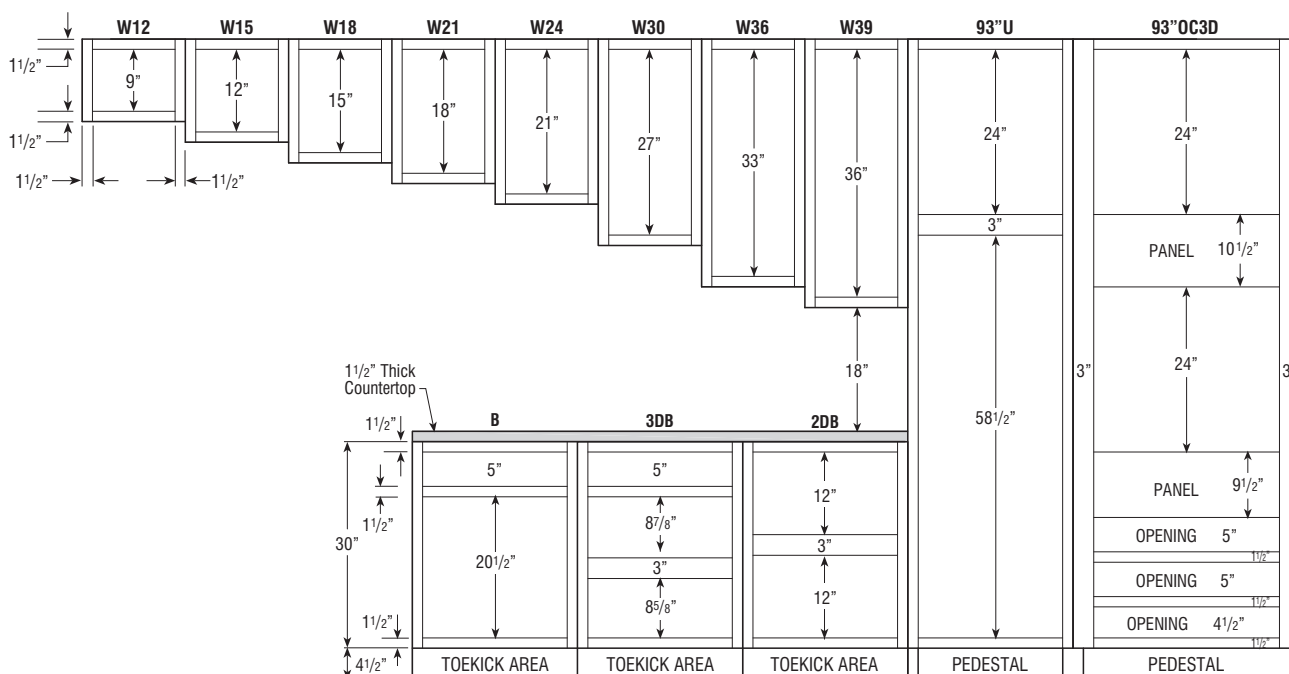
Number after Wall Cabinet Represents Height of Cabinet



CABINET DIMENSIONS

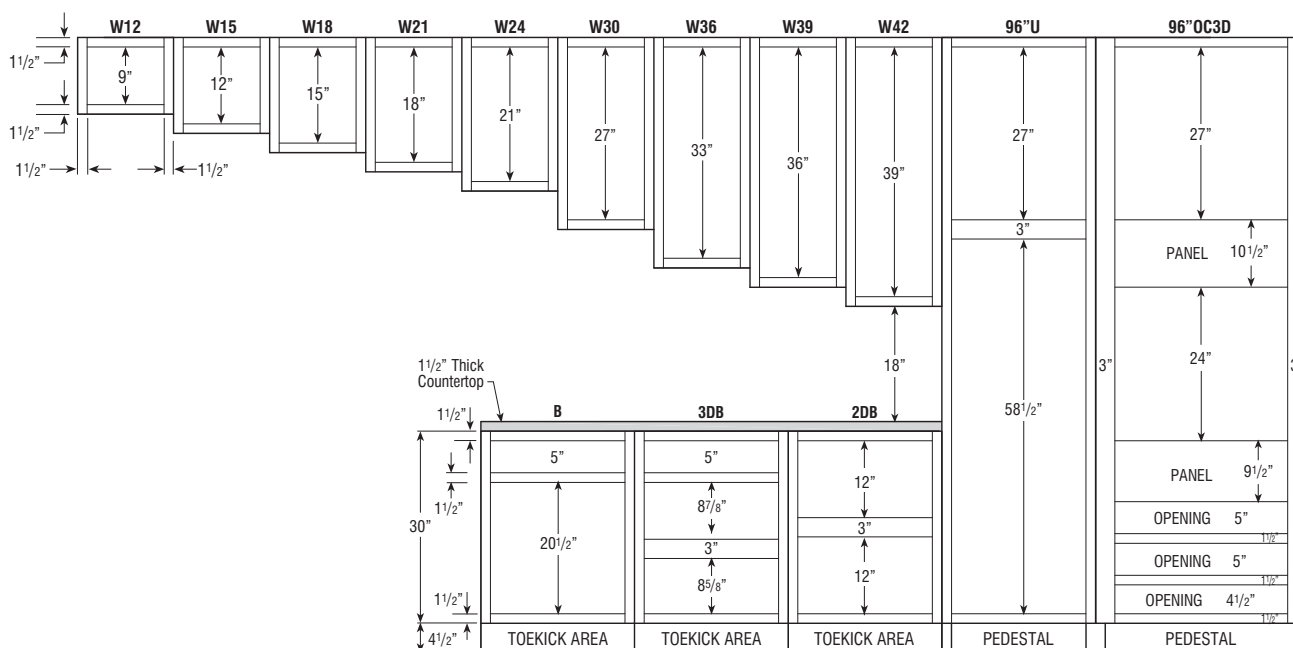
93" HIGH APPLICATION

Number after Wall Cabinet Represents Height of Cabinet



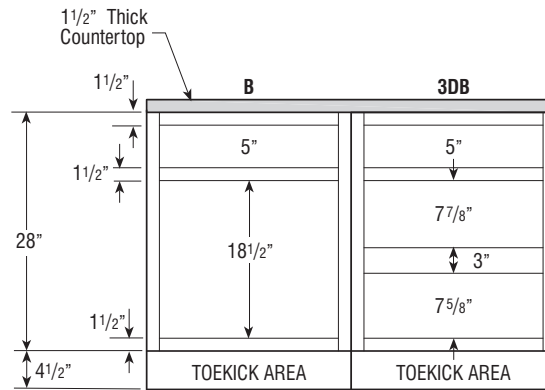
96" HIGH APPLICATION

Number after Wall Cabinet Represents Height of Cabinet

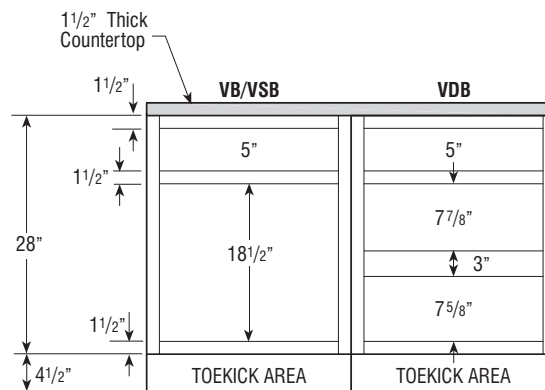


CABINET DIMENSIONS

32 1/2" HIGH BASE CABINETS



32 1/2" HIGH VANITY CABINETS



34 1/2" HIGH VANITY CABINETS

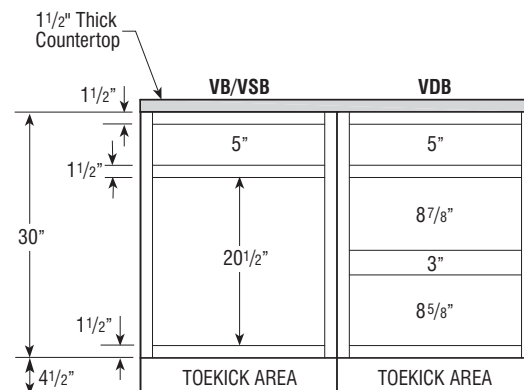


TABLE OF CONTENTS - WALL CABINETS

**12" Deep Wall**

12" High	19
15" High	19
18" High	20
21" High	20
24" High	21
30" High	22
36" High	24
39" High	26
42" High	28

12" Deep Wall Cut-for-glass

30" High	30
36" High	31
42" High	32

24" Deep Wall

12" High	34
15" High	34
18" High	35
21" High	35
24" High	36

24" Deep Microwave Wall Cabinet

18" High	36
----------------	----

12" Deep Wall Corner

30" High	37
36" High	38
39" High	39
42" High	39

12" Deep Diagonal Wall

30" High	40
36" High	40
39" High	40
42" High	40

12" Deep Diagonal Wall Cut-for-glass

30" High41

36" High41

42" High41

12" Deep Easy Reach Wall Corner

30" High42

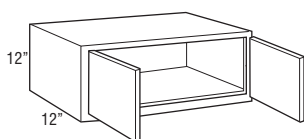
36" High42

WALL DOUBLE DOOR

12" High

12" Deep

Model	Cubic Feet	1	2	3
W3012	3.4	230	273	314
W3312	3.7	264	312	358
W3612	4.0	306	361	417



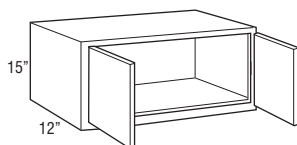
WALL DOUBLE DOOR

15" High

12" Deep

Model	Cubic Feet	1	2	3
W2415	3.2	304	358	412
W3015	3.9	276	326	371
W3315	4.2	300	355	412
W3615	4.6	329	387	446

• W2415 not available in Classic Bark.



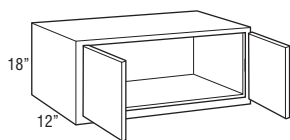
WALL DOUBLE DOOR

18" High

12" Deep

Model	Cubic Feet	1	2	3
W2418	3.8	312	365	423
W3018	4.9	329	387	446
W3318	5.3	345	404	466
W3618	5.8	353	414	474

- W2418 not available in Classic Bark.



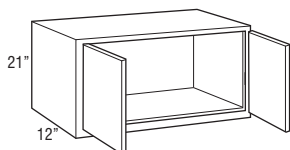
WALL DOUBLE DOOR

21" High

12" Deep

Model	Cubic Feet	1	2	3
W3021	6.7	348	409	472
W3621	8.0	383	448	513

- Not available in Classic Bark.



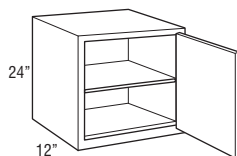
WALL SINGLE DOOR

24" High

12" Deep

Model	Cubic Feet	1	2	3
W2124R	4.6	306	361	417

- Cabinet hinged on the right; may be flipped for left hinge application.

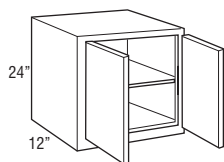


WALL DOUBLE DOOR

24" High

12" Deep

Model	Cubic Feet	1	2	3
W2424	5.2	332	390	450
W3024	6.4	367	430	498
W3324	7.0	393	463	531
W3624	7.6	412	482	552



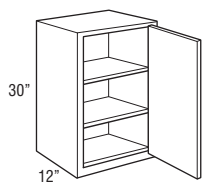
WALL SINGLE DOOR

30" High

12" Deep

Model	Cubic Feet	1	2	3
W930R	2.6	260	300	345
W1230R	3.4	264	314	361
W1530R	4.1	279	332	387
W1830R	4.9	304	358	414
W2130R	5.6	329	387	446

- Cabinet hinged on the right; may be flipped for left hinge application.

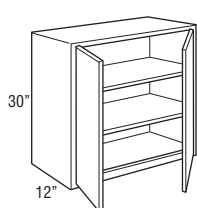


WALL DOUBLE DOOR

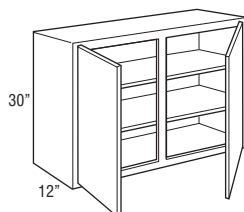
30" High

12" Deep

Model	Cubic Feet	1	2	3
W2430	6.4	358	423	482
W2730	7.2	396	466	541
W3030	7.9	414	485	554
W3330	8.7	455	536	612
W3630	9.4	470	552	634
W4230	11.0	516	608	700



W2430-W3630



W4230

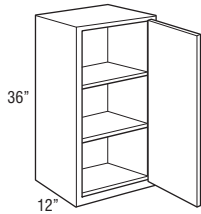
WALL SINGLE DOOR

36" High

12" Deep

Model	Cubic Feet	1	2	3
W936R	3.1	297	345	400
W1236R	4.0	312	363	423
W1536R	4.9	323	384	435
W1836R	5.8	353	414	474
W2136R	6.7	384	450	516

- Cabinet hinged on the right; may be flipped for left hinge application.

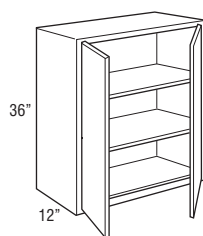


WALL DOUBLE DOOR

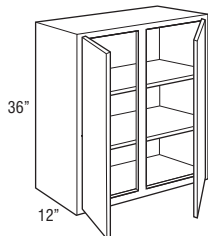
36" High

12" Deep

Model	Cubic Feet	1	2	3
W2436	7.6	417	491	567
W2736	8.5	460	541	622
W3036	9.4	477	564	649
W3336	10.3	531	622	709
W3636	11.2	548	639	738
W4236	13.1	612	718	827



W2436-W3636



W4236

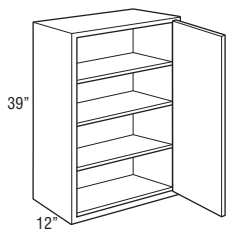
WALL SINGLE DOOR

39" High

12" Deep

Model	Cubic Feet	1	2	3
W939R	3.3	312	356	412
W1239R	4.3	327	375	430
W1539R	5.3	345	395	453
W1839R	6.3	371	426	491
W2139R	7.3	403	463	535

- Cabinet hinged on the right; may be flipped for left hinge application.
- Not available in Classic Bark.



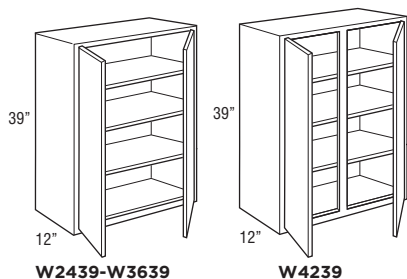
WALL DOUBLE DOOR

39" High

12" Deep

Model	Cubic Feet	1	2	3
W2439	8.2	437	501	577
W2739	9.2	484	555	638
W3039	10.2	505	579	667
W3339	11.2	559	639	734
W3639	12.1	575	659	756
W4239	14.1	641	738	850

• Not available in Classic Bark.



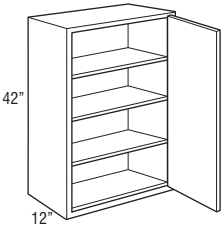
WALL SINGLE DOOR

42" High

12" Deep

Model	Cubic Feet	1	2	3
W942R	3.6	335	393	453
W1242R	4.6	353	414	474
W1542R	5.7	376	437	506
W1842R	6.7	400	470	546
W2142R	7.8	435	513	589

• Cabinet hinged on the right; may be flipped for left hinge application.

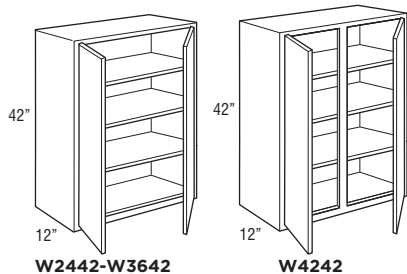


WALL DOUBLE DOOR

42" High

12" Deep

Model	Cubic Feet	1	2	3
W2442	8.8	470	552	634
W2742	9.9	519	612	703
W3042	11.0	548	639	738
W3342	12.0	603	705	814
W3642	13.1	617	729	835
W4242	15.2	689	814	938



WALL CUT-FOR-GLASS CABINETS

RECOMMENDED GLASS SIZE FOR WALL CABINET DOORS			
SKU	Omni Door Size	Door Route Size	Glass Size
WCG1530R	14 1/2" x 29 1/2"	11 1/4" x 26 1/4"	11 1/16" x 26 1/16"
WCG1830R	17 1/2" x 29 1/2"	14 1/4" x 26 1/4"	14 1/16" x 26 1/16"
WCG3030	14 11/16" x 29 1/2"	11 7/16" x 26 1/4"	11 1/4" x 26 1/16"
WCG3630	17 11/16" x 29 1/2"	14 7/16" x 26 1/4"	14 1/4" x 26 1/16"
WCG1536R	14 1/2" x 35 1/2"	11 1/4" x 32 1/4"	11 1/16" x 32 1/16"
WCG1836R	17 1/2" x 35 1/2"	14 1/4" x 32 1/4"	14 1/16" x 32 1/16"
WCG3036	14 11/16" x 35 1/2"	11 7/16" x 32 1/4"	11 1/4" x 32 1/16"
WCG3636	17 11/16" x 35 1/2"	14 7/16" x 32 1/4"	14 1/4" x 32 1/16"
WCG1542R	14 1/2" x 41 1/2"	11 1/4" x 38 1/4"	11 1/16" x 38 1/16"
WCG1842R	17 1/2" x 41 1/2"	14 1/4" x 38 1/4"	14 1/16" x 38 1/16"
WCG3042	14 11/16" x 41 1/2"	11 7/16" x 38 1/4"	11 1/4" x 38 1/16"
WCG3642	17 11/16" x 41 1/2"	14 7/16" x 38 1/4"	14 1/4" x 38 1/16"

*Recommended glass size dimensions are 3/16" smaller than glass route.

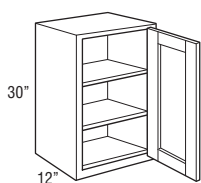
WALL CUT-FOR-GLASS

30" High

12" Deep

Model	Cubic Feet	1	2	3
WCG1530R	4.1	•	374	•
WCG1830R	4.9	•	397	•

- Cabinet hinged on the right; may be flipped for left hinge application.
- Glass clips included with door; glass not included.
- Cabinets will have matching interior.



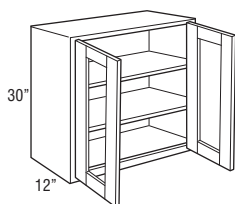
WALL CUT-FOR-GLASS

30" High

12" Deep

Model	Cubic Feet	1	2	3
WCG3030	7.9	•	574	•
WCG3630	9.4	•	638	•

- Glass clips included with door; glass not included.
- Cabinets will have matching interior.



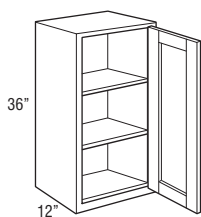
WALL CUT-FOR-GLASS

36" High

12" Deep

Model	Cubic Feet	1	2	3
WCG1536R	4.9	•	423	•
WCG1836R	5.8	•	453	•

- Cabinet hinged on the right; may be flipped for left hinge application.
- Glass clips included with door; glass not included.
- Cabinets will have matching interior.



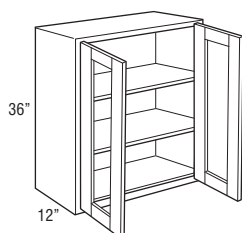
WALL CUT-FOR-GLASS

36" High

12" Deep

Model	Cubic Feet	1	2	3
WCG3036	9.4	•	649	•
WCG3636	11.2	•	722	•

- Glass clips included with door; glass not included.
- Cabinets will have matching interior.



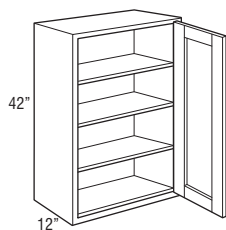
WALL CUT-FOR-GLASS

42" High

12" Deep

Model	Cubic Feet	1	2	3
WCG1542R	5.7	•	474	•
WCG1842R	6.7	•	506	•

- Cabinet hinged on the right; may be flipped for left hinge application.
- Glass clips included with door; glass not included.
- Cabinets will have matching interior.



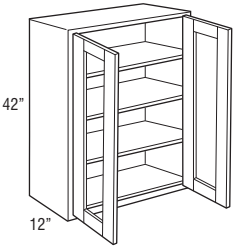
WALL CUT-FOR-GLASS

42" High

12" Deep

Model	Cubic Feet	1	2	3
WCG3042	11.0	•	722	•
WCG3642	13.0	•	810	•

- Glass clips included with door; glass not included.
- Cabinets will have matching interior.



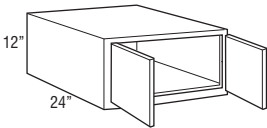
WALL DOUBLE DOOR

12" High

24" Deep

Model	Cubic Feet	1	2	3
W301224 new	6.3	341	404	•
W361224	7.4	371	435	504

- 24" deep cabinets must be supported on three surfaces when mounted.
- Load limit is 15 lbs. per square foot of load bearing surface.
- W301224 not available in Classic Bark and Spectra Snow.



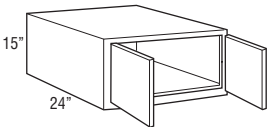
WALL DOUBLE DOOR

15" High

24" Deep

Model	Cubic Feet	1	2	3
W301524 new	7.7	387	451	•

- 24" deep cabinets must be supported on three surfaces when mounted.
- Load limit is 15 lbs. per square foot of load bearing surface.
- Not available in Classic Bark and Spectra Snow.



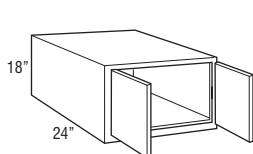
WALL DOUBLE DOOR

18" High

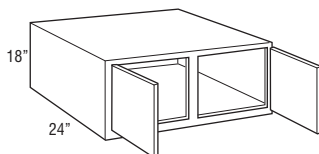
24" Deep

Model	Cubic Feet	1	2	3
W301824 new	9.1	396	468	•
W361824	10.7	402	474	548
W391824	11.5	423	495	569

- 24" deep cabinets must be supported on three surfaces when mounted.
- Load limit is 15 lbs. per square foot of load bearing surface.
- W301824 not available in Classic Bark and Spectra Snow.



W301824-W361824



W391824

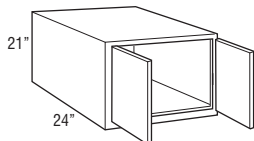
WALL DOUBLE DOOR

21" High

24" Deep

Model	Cubic Feet	1	2	3
W302124 new	10.5	422	499	•
W362124	13.5	431	508	586

- 24" deep cabinets must be supported on three surfaces when mounted.
- Load limit is 15 lbs. per square foot of load bearing surface.
- Not available in Classic Bark.
- W302124 not available in Classic Bark and Spectra Snow.
- W362124 not available in Classic Bark.



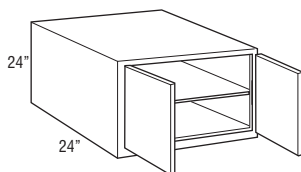
WALL DOUBLE DOOR

24" High

24" Deep

Model	Cubic Feet	1	2	3
W302424 <small>new</small>	11.9	453	534	•
W362424	14.0	460	541	622

- 24" deep cabinets must be supported on three surfaces when mounted.
- Load limit is 15 lbs. per square foot of load bearing surface.
- W302424 not available in Classic Bark and Spectra Snow.



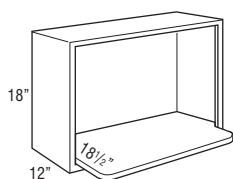
MICROWAVE WALL CABINET

18" High

24" Deep

Model	Cubic Feet	1	2	3
MW3018	4.9	426	426	426

- Includes one 3/4" shelf with six mounting screws. Microwave shelf extends beyond the front of the cabinet by 6 1/2", for a total shelf depth of 18 1/2".
- Microwave cabinet must be attached to wall stud and adjacent cabinets on both sides for support.
- Finished matching interior.

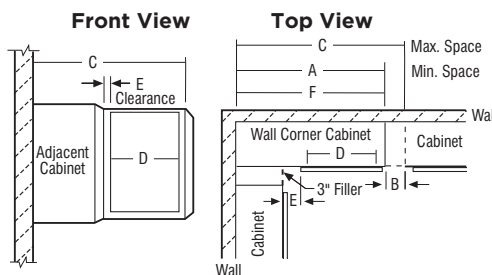


Model	Opening Width	Opening Height
MW3018	27"	14 1/2"

WALL CORNER CABINETS

SKU	A Min. Space	B Max. Pull	C Max. Space	D Cabinet Opening	E Full Overlay		E Partial Overlay		F Actual Cabinet
WC30...	30"	5"	35"	13 1/2"	At Min.	At Max.	At Min.	At Max.	30"
WC36...	36"	5"	41"	19 1/2"	1 3/4"	6 3/4"	2 1/2"	7 1/2"	36"
WC42...	42"	4 1/2"	46 1/2"	24"	3 1/4"	7 3/4"	4"	8 1/2"	42"

- Wall corner cabinets may be installed flush to the wall (left) or pulled 3" away from wall (right) to accommodate add dimensions in a kitchen design. In either case, the adjoining run of 12" wall cabinets plus a 3" filler will butt against the solid-wood panel.
- When a cabinet is "pulled" it will use proportionally more space, for example, a 30" wide WC, pulled 2" will use 32" of space.
- Blind side of wall corner cabinets cannot be installed next to a range hood unit due to door interference.



NOTE:

All outside stiles are 1 1/2" wide

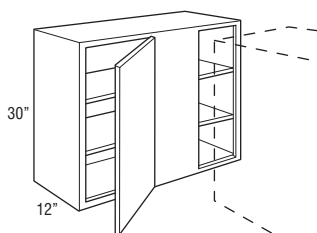
WALL CORNER SINGLE DOOR

30" High

12" Deep

Model	Cubic Feet	1	2	3
WC3030S	7.9	358	423	482
WC3630S	9.4	396	466	536

- Right blind shown; cabinet may be flipped for left blind application.
- Filler required for installation. Must be ordered separately.



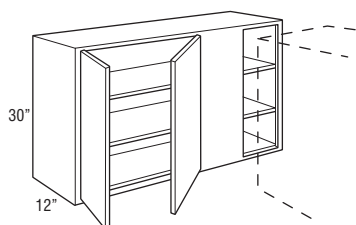
WALL CORNER DOUBLE DOOR

30" High

12" Deep

Model	Cubic Feet	1	2	3
WC4230S	11.0	460	541	622

- Right blind shown; cabinet may be flipped for left blind application.
- Filler required for installation. Must be ordered separately.



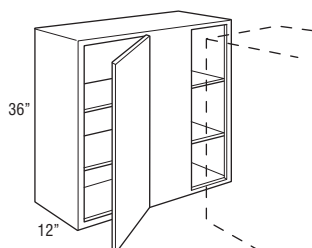
WALL CORNER SINGLE DOOR

36" High

12" Deep

Model	Cubic Feet	1	2	3
WC3036S	9.4	430	509	587
WC3636S	11.2	470	552	634

- Right blind shown; cabinet may be flipped for left blind application.
- Filler required for installation. Must be ordered separately.



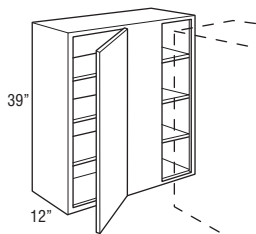
WALL CORNER SINGLE DOOR

39" High

12" Deep

Model	Cubic Feet	1	2	3
WC3039S	10.2	460	528	611
WC3639S	12.1	506	576	661

- Right blind shown; cabinet may be flipped for left blind application.
- Filler required for installation. Must be ordered separately.
- Not available in Classic Bark.



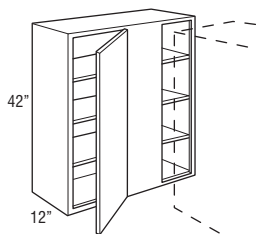
WALL CORNER SINGLE DOOR

42" High

12" Deep

Model	Cubic Feet	1	2	3
WC3042S	11.0	485	569	659
WC3642S	13.1	531	622	709

- Right blind shown; cabinet may be flipped for left blind application.
- Filler required for installation. Must be ordered separately.



DIAGONAL WALL

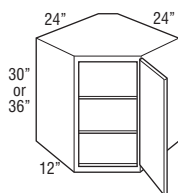
30" High

36" High

12" Deep

Model	Cubic Feet	1	2	3
DW302424R	10.8	414	485	554
DW362424R	12.9	495	587	672

- Cabinet hinged on the right; may be flipped for left hinge application.
- Cabinets require 24" x 24" of corner wall space.



DIAGONAL WALL

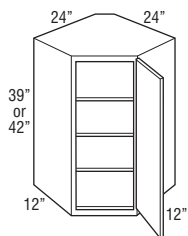
39" High

42" High

12" Deep

Model	Cubic Feet	1	2	3
DW392424R	13.9	569	674	772
DW422424R	14.9	598	703	811

- Cabinet hinged on the right; may be flipped for left hinge application.
- Cabinets require 24" x 24" of corner wall space.
- DW392424R not available in Classic Bark.



DIAGONAL WALL CUT-FOR-GLASS CABINETS

RECOMMENDED GLASS SIZE FOR WALL CABINET DOORS			
SKU	Omni Door Size	Door Route Size	Glass Size
DWCG302424R	14 1/2" x 29 1/2"	11 1/4" x 26 1/4"	11 1/16" x 26 1/16"
DWCG362424R	14 1/2" x 35 1/2"	11 1/4" x 32 1/4"	11 1/16" x 32 1/16"
DWCG422424R	14 1/2" x 41 1/2"	11 1/4" x 38 1/4"	11 1/16" x 38 1/16"

*Recommended glass size dimensions are 3/16" smaller than glass route.

DIAGONAL WALL CUT-FOR-GLASS

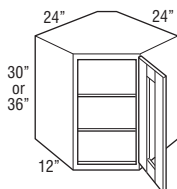
30" High

36" High

12" Deep

Model	Cubic Feet	1	2	3
DWCG302424R	10.8	•	574	•
DWCG362424R	12.9	•	672	•

- Cabinet hinged on the right; may be flipped for left hinge application.
- Cabinets require 24" x 24" of corner wall space.
- Glass clips included with door; glass not included.
- Cabinets will have matching interior.



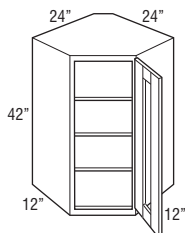
DIAGONAL WALL CUT-FOR-GLASS

42" High

12" Deep

Model	Cubic Feet	1	2	3
DWCG422424R	14.9	•	785	•

- Cabinet hinged on the right; may be flipped for left hinge application.
- Cabinets require 24" x 24" of corner wall space.
- Glass clips included with door; glass not included.
- Cabinets will have matching interior.



EASY REACH WALL CORNER

30" High

36" High

12" Deep

Model	Cubic Feet	1	2	3
ER30R	12.3	525	615	704
ER36R	14.6	631	746	855

- Requires 24" x 24" of corner wall space.
- Adjustable shelves.
- Cabinet hinged on the right; may be flipped for left hinge application.
- Hinged door opens 170°.
- Integrated soft-close hinge not included.

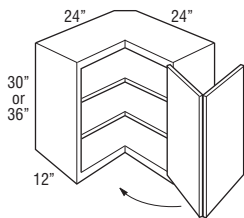


TABLE OF CONTENTS – BASE CABINETS



34 1/2" High, 24" Deep

Base with Drawer	44
Full Height Base	45
Drawer Base	46
Base Built-in Microwave Cabinet with Drawer	48
Base Wastebasket	48
Sink Base	49
Base Corner	51

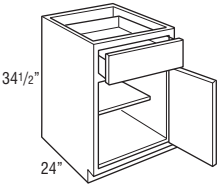
BASE SINGLE DOOR

34½" High

24" Deep

Model	Cubic Feet	1	2	3
B9R	5.4	306	361	417
B12R	7.1	332	390	450
B15R	8.7	358	423	482
B18R	10.3	387	455	523
B21R	11.7	417	491	567

- Cabinet hinged on the right; door may be flipped for left hinge application.
- Roll tray kits available for 15"-21" widths.



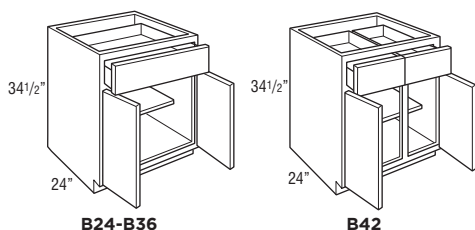
BASE DOUBLE DOOR

34½" High

24" Deep

Model	Cubic Feet	1	2	3
B24	13.3	482	567	655
B27	14.9	519	612	703
B30	16.5	556	662	756
B33	18.1	605	709	816
B36	19.6	655	767	884
B42	22.8	705	829	954

- Roll tray kits available for 24"-42" widths.



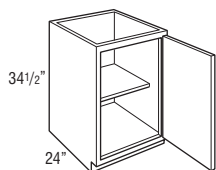
FULL HEIGHT BASE SINGLE DOOR

34½" High

24" Deep

Model	Cubic Feet	1	2	3
B9FHR	5.4	299	353	404
B12FHR	7.1	300	354	407
B15FHR	8.5	300	355	412
B18FHR	10.1	323	384	435

- Cabinet hinged on the right; door may be flipped for left hinge application.
- Roll tray kits available for 15"-18" widths.



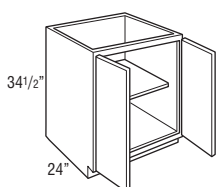
FULL HEIGHT BASE DOUBLE DOOR

34½" High

24" Deep

Model	Cubic Feet	1	2	3
B24FH	13.3	396	466	536
B30FH	16.5	460	541	622
B36FH	19.6	491	576	665

• Roll tray kits available for 24"-36" widths.



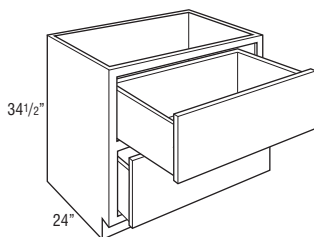
2 DRAWER BASE

34½" High

24" Deep

Model	Cubic Feet	1	2	3
2DB30	16.5	731	862	993
2DB36	19.6	801	943	1084

• On door styles with slab drawer fronts, all drawer fronts will be slab.



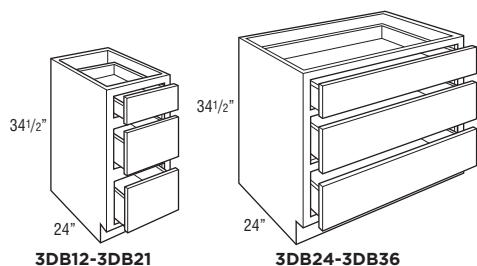
3 DRAWER BASE

34½" High

24" Deep

Model	Cubic Feet	1	2	3
3DB12	7.0	466	548	630
3DB15	8.5	509	598	687
3DB18	10.1	554	659	754
3DB21	11.7	612	718	827
3DB24	13.3	672	788	907
3DB27	14.9	702	825	950
3DB30	16.5	731	862	993
3DB33	18.1	766	903	1038
3DB36	19.6	801	943	1084

- On door styles with slab drawer fronts, all drawer fronts will be slab.



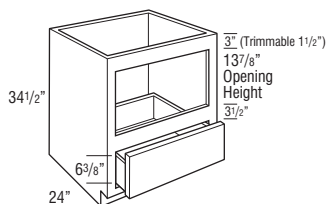
BASE BUILT-IN MICROWAVE WITH DRAWER

34 1/2" High

24" Deep

Model	Cubic Feet	1	2	3
BBMWD30	16.1	699	826	947

- The usable cabinet face height between top of drawer front and top of cabinet is 19 1/8" for partial overlay and 19 3/4" for full overlay. Be sure to verify overall appliance height, gap requirements, and cut-out dimensions with cabinet specifications.
- Metal appliance support brackets included.



Model	Opening Width	Maximum Width	Opening Height	Maximum Height
BBMWD30	27"	28 1/2"	13 7/8"	16 7/8"

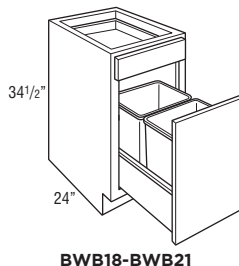
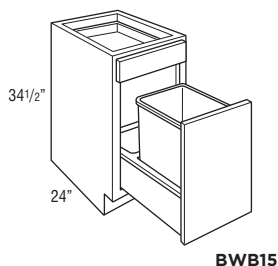
BASE WASTEBASKET

34 1/2" High

24" Deep

Model	Cubic Feet	1	2	3
BWB15	8.7	552	652	750
BWB18	10.3	634	750	862
BWB21	11.7	674	796	917

- Pull-out features undermount full extension, soft-close guides.
- BWB15 includes one 35 quart wastebasket and one trash storage area.
- BWB18 and BWB21 include two 35 quart gray wastebaskets.



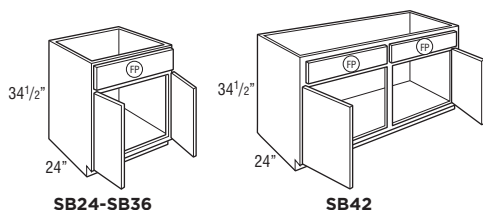
SINK BASE

34 1/2" High

24" Deep

Model	Cubic Feet	1	2	3
SB24	13.3	376	437	506
SB27	14.9	396	466	541
SB30	16.5	417	487	556
SB33	18.1	455	538	617
SB36	19.6	477	564	649
SB42	22.8	506	593	683

- Mini Touch-Up Kit (MTUK) included. MTUK includes small touch-up marker and small fill stick.
- Tilt-out tray kits available.



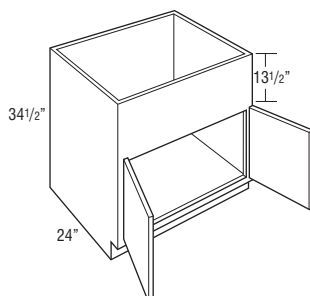
COUNTRY SINK BASE

34 1/2" High

24" Deep

Model	Cubic Feet	1	2	3
CNTYSB36	19.6	598	703	811

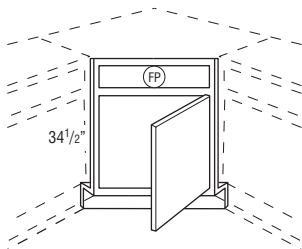
- 13 1/2" panel can be trimmed up to 12".
- Mini Touch-Up Kit (MTUK) included. MTUK includes small touch-up marker and small fill stick.
- Refer to manufacturer's recommendations for additional support required for apron front sinks.



ANGLED CORNER SINK FRONT 34½" High

Model	Cubic Feet	1	2	3
ACSF36R	2.9	300	355	412

- Frame edges beveled at 45°.
- Toekick and toekick retainer shipped unattached from the face frame.
- Sink base floor not included.
- Cabinet hinged on the right; door may be flipped for left hinge application.



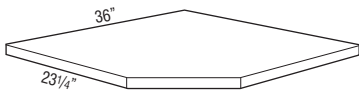
Max. Sink Widths if cut-out is 4" back from face of front frame

Wall Width	Frame	Maximum Sink Width	Maximum Sink Depth
36" x 36"	17"	25 3/4"	27 11/32"

ANGLED CORNER SINK FRONT BOTTOM

Model	Cubic Feet	1	2	3
ACSFB36	1.0	162	162	162

- Designed for use with Angled Corner Sink Front.
- 3/4" thick.
- 1-side laminated plywood.



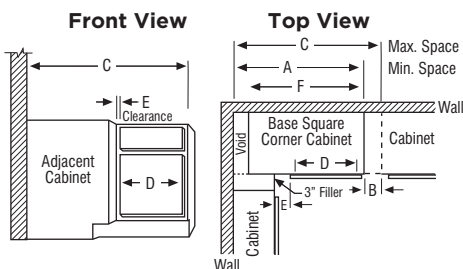
BASE CORNER CABINETS

SKU	A Min. Space	B Max. Pull	C Max. Space	D Cabinet Opening	E Full Overlay		E Partial Overlay		F Actual Cabinet
BC36S	36"	6"	42"	7 1/2"	At Min.	At Max.	At Min.	At Max.	27"
BC42S	42"	6"	48"	13 1/2"	1 3/4"	7 3/4"	2 1/2"	8 1/2"	39"
BC48S	48"	3"	51"	16 1/2"	4 3/4"	7 3/4"	5 1/2"	8 1/2"	45"

- BCs use the wall space the nomenclature implies and may be pulled up to 3" to accommodate odd dimensions in a kitchen.
- Remember to use 3" filler on adjoining cabinets.
- The adjoining run of cabinets will cover the void.

NOTE:

Full overlay styles must be pulled an additional 1 1/2" to ensure proper drawer/pull clearance. 1 1/2" pull is not included in minimum and maximum list.



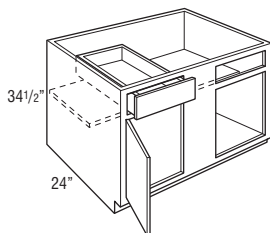
BASE CORNER SINGLE DOOR

34 1/2" High

24" Deep

Model	Cubic Feet	1	2	3
BC36S	15.0	455	538	617
BC42S	21.3	513	605	698
BC48S	24.5	598	703	811

- Right blind shown; door and drawer can be reversed for left blind application.
- Filler required for installation. Must be ordered separately.



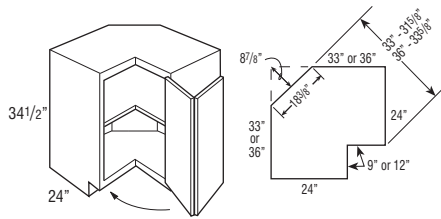
BASE EASY REACH

34 1/2" High

24" Deep

Model	Cubic Feet	1	2	3
BER33R	26.3	706	812	934
BER36R	29.1	754	886	1023

- BER33R wall width is 33" x 33". BER36R wall width is 36" x 36".
- Decorative hardware screws must be countersunk to prevent scratching of adjacent cabinets and face frame of BER.
- Not recommended for use next to an appliance deeper than standard cabinet depth.
- Soft-close not available.
- Cabinet hinged on the right; door may be flipped for left hinge application.
- BER33R not available in Classic Bark.



Due to the fixed shelves mounting shelves cannot be retrofitted.

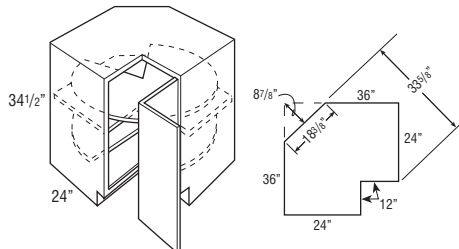
SUPER LAZY SUSAN

34 1/2" High

24" Deep

Model	Cubic Feet	1	2	3
SLS36R	29.1	954	1119	1285

- Wall width is 36" x 36".
- Features two plywood revolving shelves. Lower shelf is mounted to floor. Upper shelf is mounted to fixed shelf.
- Decorative hardware screws must be countersunk to prevent scratching adjacent cabinets and face frame of SLS.
- Not recommended for use next to an appliance deeper than standard cabinet depth.
- Soft-close not available.
- Cabinet hinged on the right; door may be flipped for left hinge application.



Due to the fixed shelves mounting shelves cannot be retrofitted.

BASE LAZY SUSAN

34 1/2" High

24" Deep

Model	Cubic Feet	1	2	3
BLS36R	20.4	678	799	915

- Wall width is 36" x 36".
- Cabinet is drum-shaped; adjoining cabinets create sides.
- Features two white plastic shelves.
- Decorative hardware screws must be countersunk to prevent scratching of adjacent cabinets and face frame of BLS.
- Not recommended for use next to an appliance deeper than standard cabinet depth.
- Soft-close not available.
- Cabinet hinged on the right; door may be flipped for left hinge application.
- Back material made from MDF.

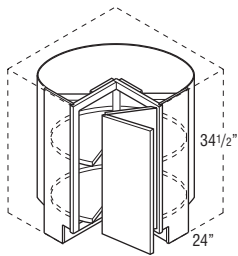
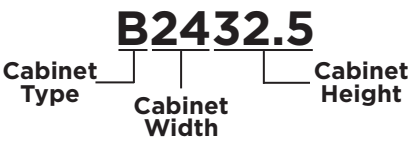


TABLE OF CONTENTS - UNIVERSAL DESIGN CABINETS



32 1/2" High, 24" Deep

Universal Design Base	55
Universal Design 3 Drawer Base	56
Universal Design Base Built-in Microwave Cabinet with Drawer	57
Universal Design Base Sink Removable	57
Universal Design Base Corner	58
Universal Design Super Lazy Susan	59
Universal Design Vanity Base Sink Removable	59

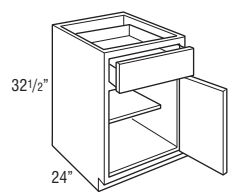
UNIVERSAL DESIGN, BASE SINGLE DOOR

32½" High

24" Deep

Model	Cubic Feet	1	2	3
B932.5R	5.0	•	361	•
B1232.5R	6.5	•	390	•
B1532.5R	8.0	•	423	•
B1832.5R	9.4	•	455	•
B2132.5R	10.9	•	491	•

- Cabinet hinged on the right; door may be flipped for left hinge application.
- Roll tray kits available for 15"-21" widths.
- Only available in Omni Snow.



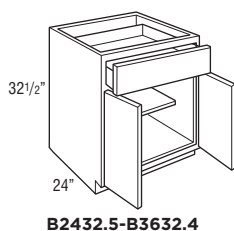
UNIVERSAL DESIGN, BASE DOUBLE DOOR

32½" High

24" Deep

Model	Cubic Feet	1	2	3
B2432.5	12.4	•	567	•
B3032.5	15.3	•	662	•
B3332.5	16.8	•	709	•
B3632.5	18.3	•	767	•

- Roll tray kits available for 24"-36" widths.
- Only available in Omni Snow.



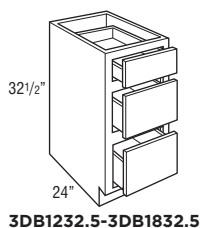
UNIVERSAL DESIGN, 3 DRAWER BASE

32½" High

24" Deep

Model	Cubic Feet	1	2	3
3DB1232.5	6.3	•	548	•
3DB1532.5	8.0	•	598	•
3DB1832.5	9.4	•	659	•

- On door styles with slab drawer fronts, all drawer fronts will be slab.
- Only available in Omni Snow.



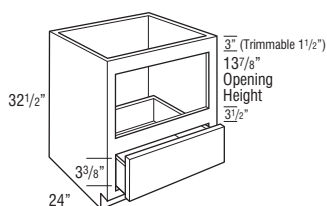
UNIVERSAL DESIGN, BASE BUILT-IN MICROWAVE WITH DRAWER

32 1/2" High

24" Deep

Model	Cubic Feet	1	2	3
BBMWD3032.5	15.3	•	785	•

- Matching Interior.
- Only available in Omni Snow.
- Metal appliance support brackets included.



Model	Opening Width	Maximum Width	Opening Height	Maximum Height
BBMWD30	27"	28 1/2"	13 7/8"	16 7/8"

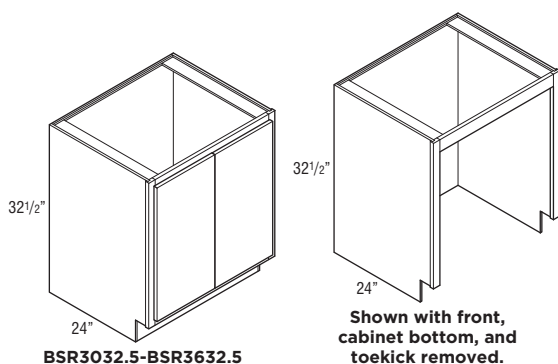
UNIVERSAL DESIGN, BASE SINK REMOVABLE

32 1/2" High

24" Deep

Model	Cubic Feet	1	2	3
BSR3032.5	13.7	•	400	•
BSR3332.5	14.9	•	412	•
BSR3632.5	16.4	•	423	•

- Natural Maple laminate interior.
- Cabinet must supported on both sides. Not intended for end of run.
- Front, cabinet bottom, and toe kick are removable.
- Mini Touch-Up Kit (MTUK) included. MTUK includes small touch-up marker and small fill stick.
- Only available in Omni Snow.

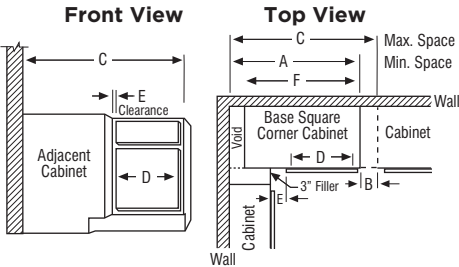


UNIVERSAL DESIGN CORNER CABINETS

SKU	A Min. Space	B Max. Pull	C Max. Space	D Cabinet Opening	E Full Overlay At Min. At Max.		E Partial Overlay At Min. At Max.		F Actual Cabinet
BC3632.5S	32"	6"	42"	7 1/2"	1 3/4"	7 3/4"	2 1/2"	8 1/2"	27"

- BCs use the wall space the nomenclature implies and may be pulled up to 3" to accommodate odd dimensions in a kitchen.
- Remember to use 3" filler on adjoining cabinets.
- The adjoining run of cabinets will cover the void.

NOTE:
Full overlay styles must be pulled an additional 1 1/2" to ensure proper drawer/pull clearance. 1 1/2" pull is not included in minimum and maximum list.



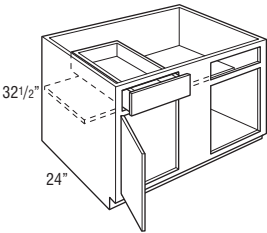
UNIVERSAL DESIGN, BASE CORNER SINGLE DOOR

32 1/2" High

24" Deep

Model	Cubic Feet	1	2	3
BC3632.5S	14.1	•	538	•

- Right blind shown; door and drawer can be reversed for left blind application.
- Filler required for installation. Must be ordered separately.
- Only available in Omni Snow.



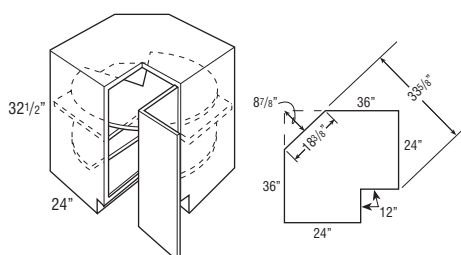
UNIVERSAL DESIGN, SUPER LAZY SUSAN

32½" High

24" Deep

Model	Cubic Feet	1	2	3
SLS3632.5R	18.4	•	1119	•

- Wall width is 36" x 36".
- Features two plywood revolving shelves. Lower shelf is mounted to floor. Upper shelf is mounted to fixed shelf.
- Decorative hardware screws must be countersunk to prevent scratching adjacent cabinets and face frame of SLS.
- Not recommended for use next to an appliance deeper than standard cabinet depth.
- Soft-close not available.
- Cabinet hinged on the right; door may be flipped for left hinge application.
- Only available in Omni Snow.



Due to the fixed shelves mounting shelves cannot be retrofitted.

UNIVERSAL DESIGN, VANITY BASE SINK REMOVABLE

32½" High

21" Deep

Model	Cubic Feet	1	2	3
VBSR3032.521	13.7	•	516	•
VBSR3332.521	14.9	•	530	•
VBSR3632.521	16.3	•	543	•

- Natural Maple laminate interior.
- Cabinet must supported on both sides. Not intended for end of run.
- Front, cabinet bottom, and toekick are removable.
- Mini Touch-Up Kit (MTUK) included. MTUK includes small touch-up marker and small fill stick.
- Only available in Omni Snow.

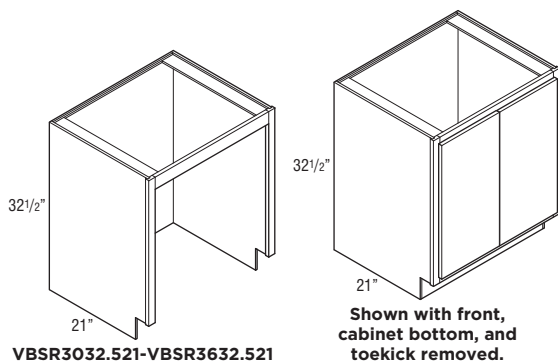
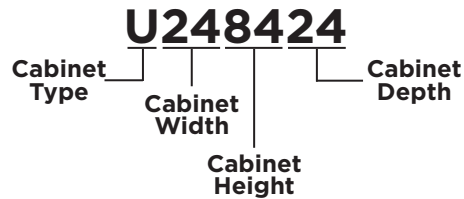


TABLE OF CONTENTS – TALL CABINETS

**18" Wide Utility Single Door**

84" High	61
90" High	61
93" High	62
96" High	62

24" Wide Utility Double Door

84" High	63
90" High	63
93" High	64
96" High	64

30" Wide Utility Double Door

84" High	65
90" High	65
93" High	66
96" High	66

33" Wide Oven 3 Drawers

84" High	67
90" High	67
93" High	68
96" High	68

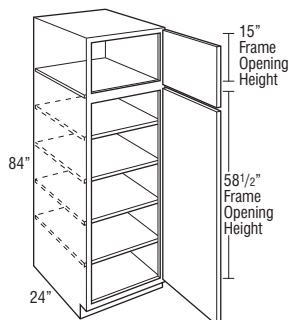
18" WIDE UTILITY SINGLE DOOR

84" High

24" Deep

Model	Cubic Feet	1	2	3
U188424R	23.4	855	1004	1156

- Roll tray kits available.
- Cabinet hinged on the right; door may be flipped for left hinge application.



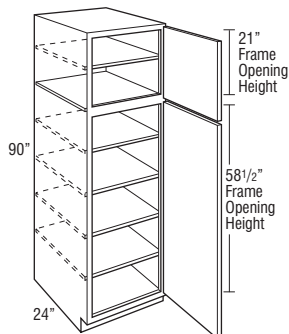
18" WIDE UTILITY SINGLE DOOR

90" High

24" Deep

Model	Cubic Feet	1	2	3
U189024R	25.4	954	1119	1285

- Roll tray kits available.
- Cabinet hinged on the right; door may be flipped for left hinge application.



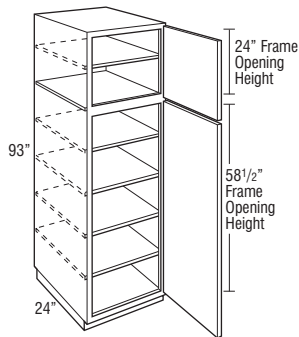
18" WIDE UTILITY SINGLE DOOR

93" High

24" Deep

Model	Cubic Feet	1	2	3
U189324R	26.1	970	1138	1311

- Separate pedestal base included on 93" tall.
- Roll tray kits available.
- Cabinet hinged on the right; door may be flipped for left hinge application.
- Not available in Classic Bark.



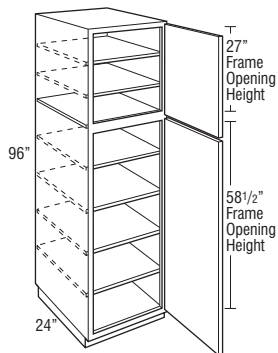
18" WIDE UTILITY SINGLE DOOR

96" High

24" Deep

Model	Cubic Feet	1	2	3
U189624R	27.0	1063	1249	1436

- Separate pedestal base included on 96" tall.
- Roll tray kits available.
- Cabinet hinged on the right; door may be flipped for left hinge application.



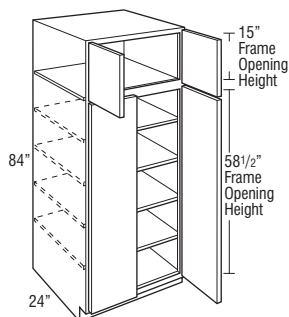
24" WIDE UTILITY DOUBLE DOOR

84" High

24" Deep

Model	Cubic Feet	1	2	3
U248424	30.9	1038	1226	1411

- Roll tray kits available.



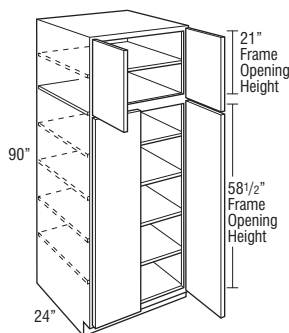
24" WIDE UTILITY DOUBLE DOOR

90" High

24" Deep

Model	Cubic Feet	1	2	3
U249024	33.4	1167	1373	1576

- Roll tray kits available.



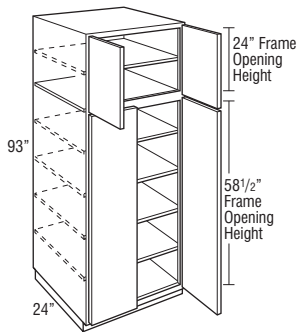
24" WIDE UTILITY DOUBLE DOOR

93" High

24" Deep

Model	Cubic Feet	1	2	3
U249324	34.5	1191	1400	1608

- Separate pedestal base included on 93" tall.
- Roll tray kits available.
- Not available in Classic Bark.



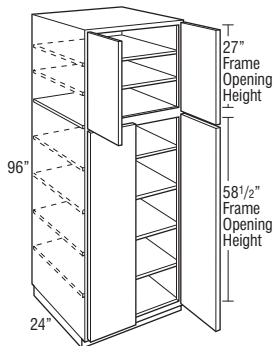
24" WIDE UTILITY DOUBLE DOOR

96" High

24" Deep

Model	Cubic Feet	1	2	3
U249624	35.6	1308	1539	1767

- Separate pedestal base included on 96" tall.
- Roll tray kits available.



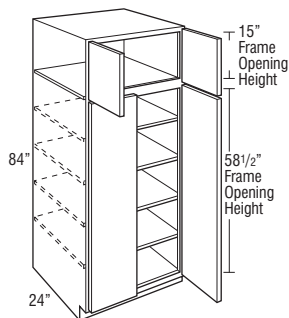
30" WIDE UTILITY DOUBLE DOOR

84" High

24" Deep

Model	Cubic Feet	1	2	3
U308424	43.0	1231	1449	1665

- Roll tray kits available.
- Not available in Classic Bark.



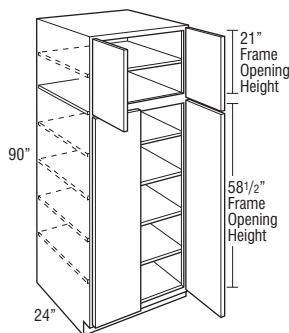
30" WIDE UTILITY DOUBLE DOOR

90" High

24" Deep

Model	Cubic Feet	1	2	3
U309024	46.0	1382	1626	1869

- Roll tray kits available.
- Not available in Classic Bark.



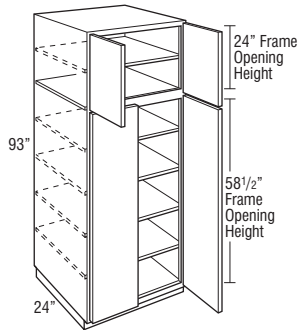
30" WIDE UTILITY DOUBLE DOOR

93" High

24" Deep

Model	Cubic Feet	1	2	3
U309324	46.5	1468	1728	1985

- Separate pedestal base included on 93" tall.
- Roll tray kits available.
- Not available in Classic Bark.



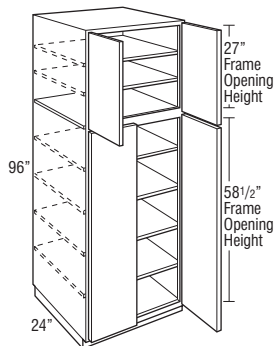
30" WIDE UTILITY DOUBLE DOOR

96" High

24" Deep

Model	Cubic Feet	1	2	3
U309624	49.0	1554	1828	2101

- Separate pedestal base included on 96" tall.
- Roll tray kits available.
- Not available in Classic Bark.



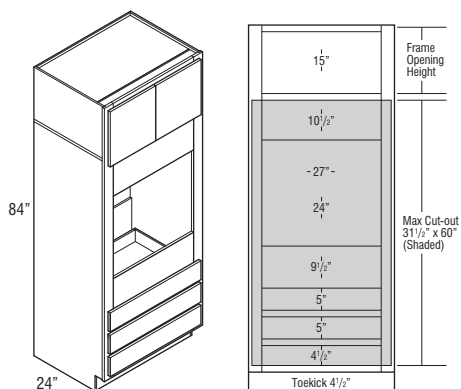
33" WIDE OVEN 3 DRAWERS

84" High

24" Deep

Model	Cubic Feet	1	2	3
OC3D338424	47.7	1362	1599	1837

- Oven cabinets feature an open back in cut-out area designed to improve field appliance installation.
- Metal appliance support brackets included for 24" deep cabinets.
- Confirm a heat shield is built into your appliance by the manufacturer.



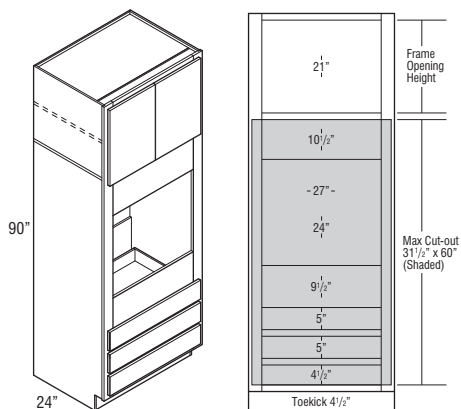
33" WIDE OVEN 3 DRAWERS

90" High

24" Deep

Model	Cubic Feet	1	2	3
OC3D339024	51.0	1594	1875	2156

- Oven cabinets feature an open back in cut-out area designed to improve field appliance installation.
- Metal appliance support brackets included for 24" deep cabinets.
- Confirm a heat shield is built into your appliance by the manufacturer.



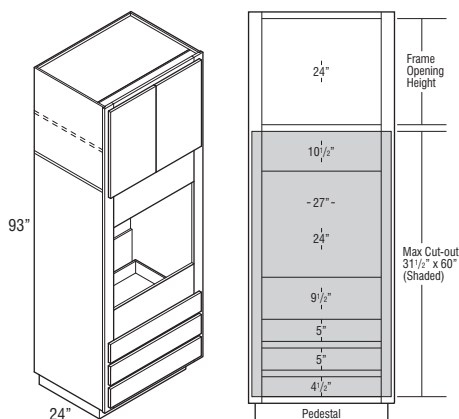
33" WIDE OVEN 3 DRAWERS

93" High

24" Deep

Model	Cubic Feet	1	2	3
OC3D339324	52.6	1631	1919	2208

- Oven cabinets feature an open back in cut-out area designed to improve field appliance installation.
- Metal appliance support brackets included for 24" deep cabinets.
- Separate pedestal base included on 93" tall.
- Confirm a heat shield is built into your appliance by the manufacturer.
- Not available in Classic Bark.



33" WIDE OVEN 3 DRAWERS

96" High

24" Deep

Model	Cubic Feet	1	2	3
OC3D339624	54.3	1795	2114	2432

- Oven cabinets feature an open back in cut-out area designed to improve field appliance installation.
- Metal appliance support brackets included for 24" deep cabinets.
- Separate pedestal base included on 96" tall.
- Confirm a heat shield is built into your appliance by the manufacturer.

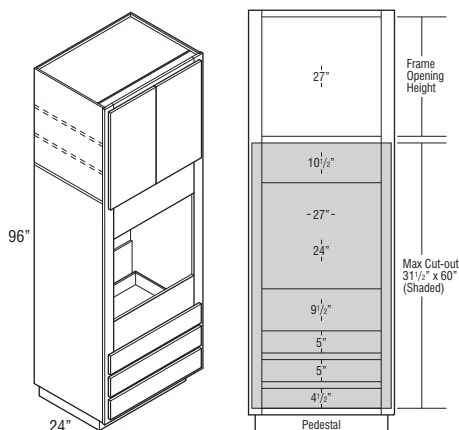
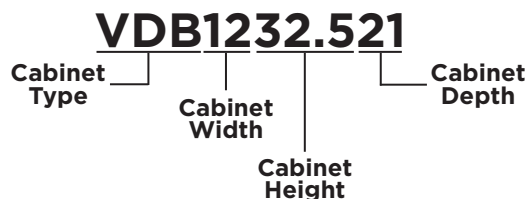


TABLE OF CONTENTS - VANITY CABINETS



32 1/2" High, 21" Deep

Vanity Drawer Base	70
Vanity Sink Base	71

34 1/2" High, 18" Deep

Vanity Sink Base	71
------------------------	----

34 1/2" High, 21" Deep

Vanity Base with Drawer	72
Vanity Drawer Base	72
Vanity Sink Base	73
Vanity Sink Drawer Base	73
Vanity Sink Three Drawer Base	74

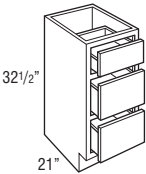
VANITY DRAWER BASE

32½" High

21" Deep

Model	Cubic Feet	1	2	3
VDB1232.521	5.7	453	531	608
VDB1532.521	7.1	495	583	672
VDB1832.521	8.4	541	634	731

• On door styles with slab drawer fronts, all drawer fronts will be slab.



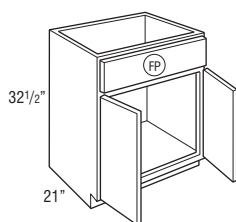
VANITY SINK BASE

32½" High

21" Deep

Model	Cubic Feet	1	2	3
VSB2432.521	11.0	361	427	491
VSB3032.521	13.7	402	474	548
VSB3632.521	16.3	466	548	630

- Tilt-out tray kits available.



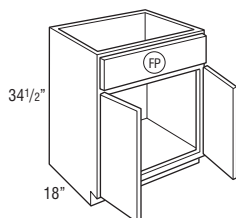
VANITY SINK BASE

34½" High

18" Deep

Model	Cubic Feet	1	2	3
VSB243418	10.2	•	518	•

- Tilt-out tray kits available.
- Only available in Omni Snow.



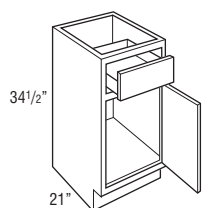
VANITY BASE SINGLE DOOR

34½" High

21" Deep

Model	Cubic Feet	1	2	3
VB153421R	7.6	345	404	466
VB183421R	9.0	376	437	506

- Cabinet hinged on the right; door may be flipped for left hinge application.



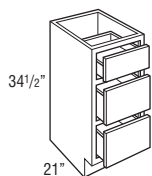
VANITY DRAWER BASE

34½" High

21" Deep

Model	Cubic Feet	1	2	3
VDB123421	6.2	453	531	608
VDB153421	7.6	495	583	672
VDB183421	8.9	541	634	731
VDB213421 <small>new</small>	10.4	582	675	•
VDB243421 <small>new</small>	11.8	624	716	•

- On door styles with slab drawer fronts, all drawer fronts will be slab.
- VDB213421 and VDB243421 not available in Classic Bark and Spectra Snow.



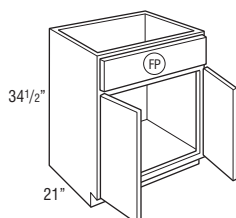
VANITY SINK BASE

34½" High

21" Deep

Model	Cubic Feet	1	2	3
VSB243421	11.9	361	427	491
VSB273421	13.3	383	451	520
VSB303421	14.7	402	474	548
VSB333421 new	16.2	453	525	•
VSB363421	17.5	466	548	630

- Tilt-out tray kits available.
- VSB333421 not available in Classic Bark and Spectra Snow.

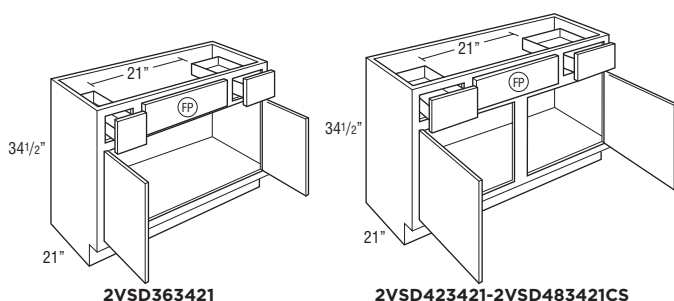


VANITY SINK DRAWER BASE

34½" High

21" Deep

Model	Cubic Feet	1	2	3
2VSD363421	17.4	617	729	835
2VSD423421	20.3	672	791	910
2VSD483421CS	23.1	735	866	997



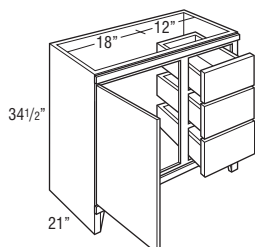
VANITY SINK DRAWER BASE

34½" High

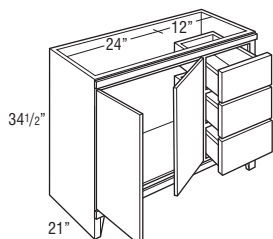
21" Deep

Model	Cubic Feet	1	2	3
3VSD303421 L or R	14.7	•	781	901
3VSD363421 L or R	17.5	•	910	1043

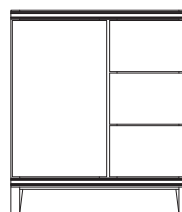
- L or R indicates drawer location.
- Top drawer is scoop drawer; 6 inches from top.
- Matching finished interior.
- 3VSD has open toe kick. Toeboard can be used to cover if not desired.
- Not available in Classic Bark and Classic Snow.



3VSD303421 L or R
3VSD303421R shown



3VSD363421 L or R Butt doors
3VSD363421R shown



Front view

VANITY SINK THREE DRAWER BASE

34½" High

21" Deep

Model	Cubic Feet	1	2	3
VSDS603421 new	28.8	839	970	•

- Not available in Classic Bark and Spectra Snow.

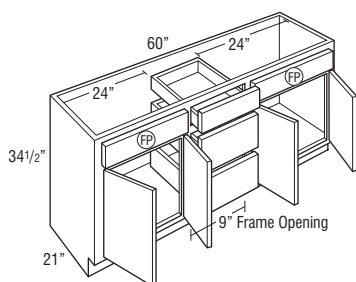


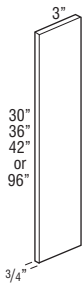
TABLE OF CONTENTS – FILLERS, SKINS, PANELS, & MOULDING

Fillers	76
Skins	78
Panels	80
Crown Moulding	83
Starter Moulding	86
Accent Moulding	86
Corner Moulding	88
Toe Moulding Baseboard, Shaker	89
Toeboard	90
Toekick Cap	90
Straight Valance / Baseboard	91
Furniture Valance	91

3" FILLER

Model	Cubic Feet	Price
F330	0.2	47
F336	0.2	52
F342	0.2	59
TF396FH	0.5	132

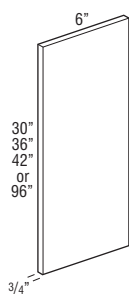
- 3/4" thick.
- Finished on front and two long edges (backs are not finished).



6" FILLER

Model	Cubic Feet	Price
F630	0.2	87
F636	0.2	96
F642	0.2	109
TF696FH	0.5	210

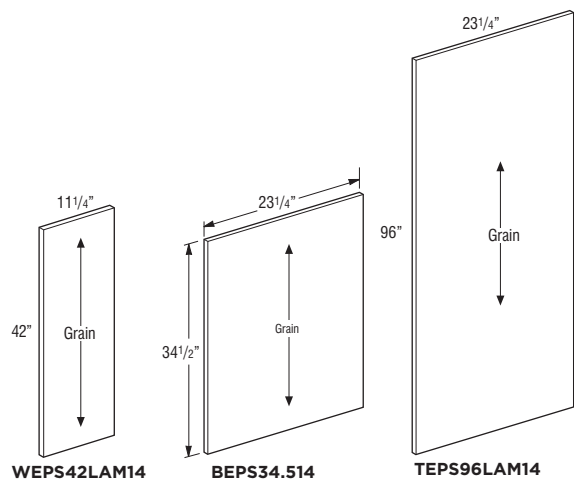
- 3/4" thick.
- Finished on front and two long edges (backs are not finished).



END PANEL SKINS

Model	Cubic Feet	Price
WEPS42LAM14	0.5	93
BEPS34.514	0.7	84
TEPS96LAM14	2.7	162

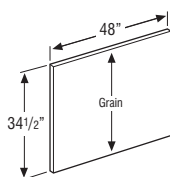
- 1/4" thick laminated furniture board.
- One side matching exterior and the other side Natural Maple laminate interior.



FINISHED BACK SKINS

Model	Cubic Feet	Price
BP4834.514	1.1	96

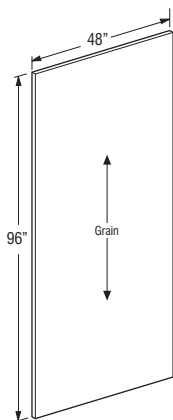
- 1/4" thick laminated furniture board.
- Grain runs with 34.5".
- One side matching exterior and the other side is unfinished.



FINISHED BACK SKINS

Model	Cubic Feet	Price
BP4896LAM14	2.7	210

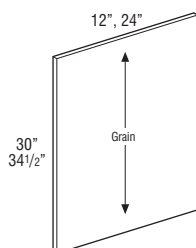
- 1/4" thick laminated furniture board.
- Grain runs with 96".
- One side matching exterior and the other side is unfinished.



BASE AND WALL END PANELS

Model	Cubic Feet	Price
BEPWD	1.7	139
WEP1230WD	1.7	152

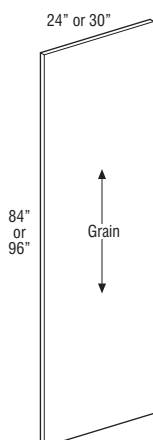
- 3/4" Plywood panel with lamination paper on both sides, edgeband on front edge.
- Matching exterior on both sides.



TALL END PANEL

Model	Cubic Feet	Price
TEP2484WD new	1.3	242
TEP2496WD	1.3	262
TEP3096WD new	1.3	355

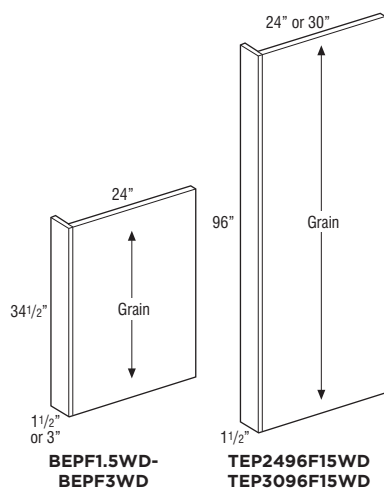
- 3/4" thick plywood panel with lamination paper on both sides, edgeband on front edge.
- Matching exterior on both sides.



BASE AND TALL PANELS WITH FILLER ATTACHED

Model	Cubic Feet	Price
BEPF1.5WD new	1.7	170
BEPF3WD new	1.7	175
TEP2496F15WD new	1.3	318
TEP3096F15WD new	1.3	477

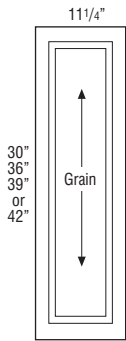
- 1/2" thick plywood with filler attached.
- One side matching exterior and the other side Natural Maple laminate interior.



WALL END DECORATIVE DOOR PANEL KIT

Model	Cubic Feet	1	2	3
WED1230	0.8	•	163	188
WED1236	0.9	•	186	216
WED1239	1.0	•	201	230
WED1242	1.1	•	214	246

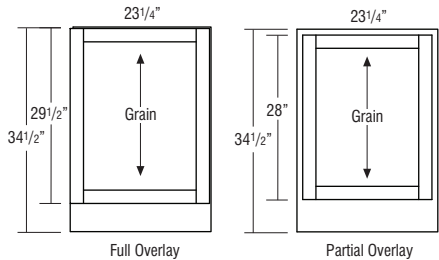
• Door panel kits include Wall End Panel Skin and doors with attachment screws for field installation.



BASE END DECORATIVE DOOR PANEL KIT

Model	Cubic Feet	1	2	3
BEDSD	1.6	•	246	280

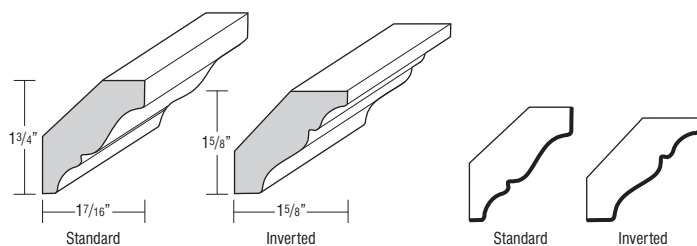
• Door panel kits include Base End Panel Skin and doors with attachment screws for field installation.



CROWN MOULDING, SOLID WOOD CROWN

Model	Cubic Feet	Price
SWCRM8	0.5	117

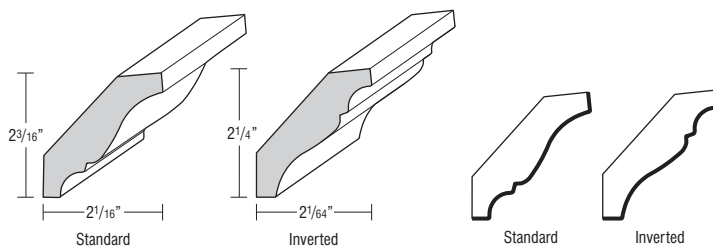
- Face mounts on Partial Overlay doors.
- May be face mounted on Full Overlay if used with a cleat.
- One 8' section.
- Moulding can be used as standard or inverted.
- Finished edges indicated by bold lines on side view drawings.



CROWN MOULDING, SOLID WOOD LARGE CROWN

Model	Cubic Feet	Price
SWLCRM8	0.5	151

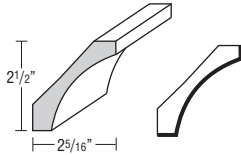
- Face mounts on Partial Overlay doors.
- May be face mounted on Full Overlay if used with a cleat.
- One 8' section.
- Moulding can be used as standard or inverted.
- Finished edges indicated by bold lines on side view drawings.



CROWN MOULDING, SMALL COVE CROWN

Model	Cubic Feet	Price
SMCOVECROWN8	1.0	190

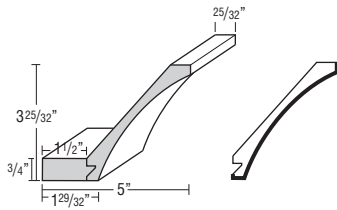
- One 8' section.
- Finished edges indicated by bold lines on side view drawings.



CROWN MOULDING, COVE CROWN

Model	Cubic Feet	Price
COVECROWN8	1.0	236

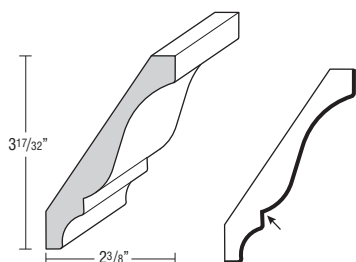
- One 8' section.
- Cleat shipped unattached can be used for top mount or face frame applications.
- Finished edges indicated by bold lines on side view drawings.



CROWN MOULDING, TALL CROWN

Model	Cubic Feet	Price
MTCROWN8 new	1.0	213

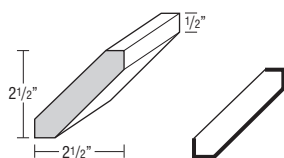
- One 8' section.
- Finished edges indicated by bold lines on side view drawings.
- Not available in Classic Bark and Omni Graphite.



CROWN MOULDING, LARGE SHAKER

Model	Cubic Feet	Price
LSHAKER8	1.0	144

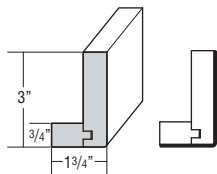
- One 8' section.
- Finished edges indicated by bold lines on side view drawings.
- Not available in Classic Bark.



STARTER MOULDING, SHAKER

Model	Cubic Feet	Price
STRS8	1.0	367

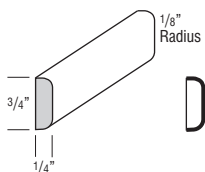
- One 8' section.
- Finished edges indicated by bold lines on side view drawings.



ACCENT MOULDING, FLAT SCRIBE

Model	Cubic Feet	Price
SM8	0.5	47

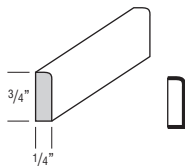
- One 8' section.
- Finished edges indicated by bold lines on side view drawings.



ACCENT MOULDING, SMALL SCRIBE

Model	Cubic Feet	Price
SCRIBE8	0.5	47

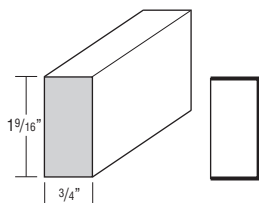
- One 8' section.
- Finished edges indicated by bold lines on side view drawings.



ACCENT MOULDING, LIGHT BAFFLE

Model	Cubic Feet	Price
LB2	0.5	84

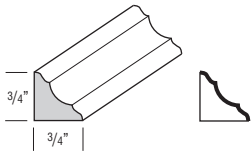
- One 8' section.
- Finished edges indicated by bold lines on side view drawings.



CORNER MOULDING, INSIDE CORNER

Model	Cubic Feet	Price
ICM8	0.5	67

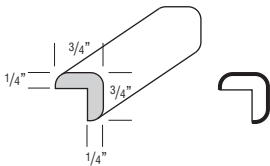
- One 8' section.
- Finished edges indicated by bold lines on side view drawings.



CORNER MOULDING, OUTSIDE CORNER

Model	Cubic Feet	Price
OCM8	0.5	67

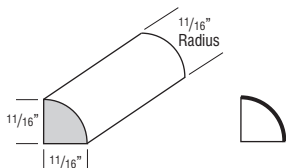
- One 8' section.



CORNER MOULDING, QUARTER ROUND

Model	Cubic Feet	Price
QRM	0.5	70

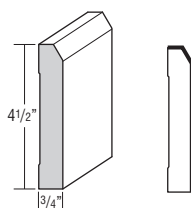
- One 8' section.
- Finished edges indicated by bold lines on side view drawings.



TOE MOULDING BASEBOARD, SHAKER

Model	Cubic Feet	Price
BBMSH8 new	1.0	251

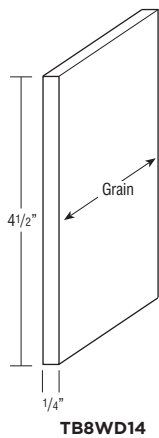
- One 8' section.
- Finished edges indicated by bold lines on side view drawings.
- Not available in Classic Bark and Omni Graphite.



TOEBOARD

Model	Cubic Feet	Price
TB8WD14 new	0.1	115

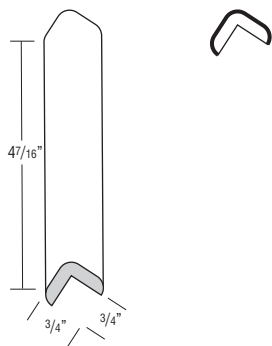
- One 8' section.
- 1/4" thick plywood.
- One side matching exterior and the other side unfinished.



TOEKICK CAP

Model	Cubic Feet	Price
TKC	0.5	34

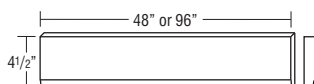
- Sold in pairs.



STRAIGHT VALANCE / BASEBOARD

Model	Cubic Feet	Price
VV48	0.4	82
VV96	0.4	162

- Trimmable.
- Profiled bottom edge 3/4" thick.



FURNITURE VALANCE

Model	Cubic Feet	Price
FV36	0.1	80
FV48	0.1	97
FV60	0.2	106
FV72	0.2	128

- Side shoulders are 8" wide (6" trimmable each end).
- Bottom edge has 3/16" radius profile on face.
- 3/4" thick.

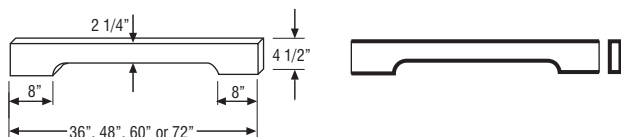


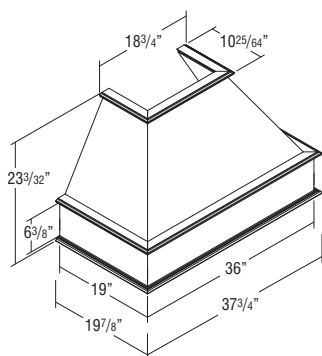
TABLE OF CONTENTS – ACCESSORIES

Classic Square Wood Hood	93
Classic Wood Hood Chimney	93
Wood Hood Blower	94
Roll Tray Kits	95
Tilt-out Trays	96
Floating Shelves	97
Cutlery Insert Wood Organizer	98
Stain, Paint, & Touch-up Tools	99

CLASSIC SQUARE WOOD HOOD

Model	Cubic Feet	Price
WHS36	30.0	2618

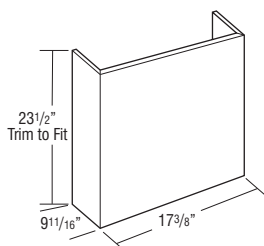
- Freestanding unit (must be properly secured to wall and cannot be attached to adjacent cabinets).
- Exhaust system not included. Compatible with BLOWER400.
- Compatible with Classic Wood Hood Chimney (WHC_ _), which can be trimmed. See below.
- Check your local building code for installation heights above the range.
- Silver metallic liner included. Assembly required.
- Installation instructions and hardware included.
- Liner opening size: 10 1/4" deep by 19 1/2" wide.
- Only available in Classic Snow, Omni Snow, and Spectra Snow.



CLASSIC WOOD HOOD CHIMNEY

Model	Cubic Feet	Price
WHC36	4.1	493

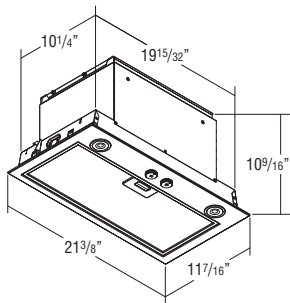
- 3/4" thick plywood.
- Trimmable.
- If trimmed, moulding is recommended to conceal any cut marks.
- Only available in Classic Snow, Omni Snow, and Spectra Snow.



WOOD HOOD BLOWER, 400 CFM

Model	Cubic Feet	Price
BLOWER400	2.9	1000

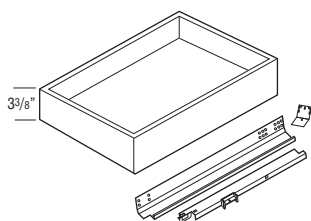
- 400 CFM, Energy Star rated.
- Two 2.8 watt (250+ Lumens) LED lights included.
- Installation instructions, warranty, and repair information included.
- Stainless Steel finish.
- Three speed rotary switch control.
- Includes removable dishwasher safe grease filter.
- Heat Sentry technology included.
- Sound rating is 7.0 sones on highest setting.
- Vertical ducting requires 7" diameter vent.
- 1 year warranty.



ROLL TRAY KITS

Model	Cubic Feet	Price
RT15WD	0.5	135
RT18WD	0.8	142
RT21WD	0.9	146
RT24WD	1.0	151
RT27WD	1.4	157
RT30WD	1.4	162
RT33WD	1.6	170
RT36WD	1.6	176
RT42WD	1.8	290

- 5/8" solid-wood dovetail roll tray with soft-closing, undermount, full extension guides.
- RT15WD-RT36WD kits contain 1 roll tray, roll tray brackets, hardware, and screws.
- RT42WD kits contain 2 roll trays, roll tray brackets, hardware, and screws.
- Exterior dimensions of roll trays are 21" deep x 3 3/8" tall (fits standard 24" deep cabinet).

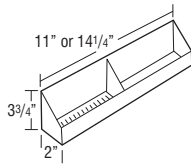


Width	Application
15"	B15, B15FH, B1532.5
18"	B18, B18FH, B1832.5, U18
21"	B21, B2132.5
24"	B24, B24FH, B2432.5, U24
27"	B27, B2732.5
30"	B30, B30FHB, B3032.5, U30
33"	B33, B3332.5
36"	B36, B36FH, B3632.5
42"	B42, B4232.5

TILT-OUT TRAYS

Model	Cubic Feet	Price
TOT15	0.1	87
TOT18	0.2	87

- TOT15: 11" w X 2" d X 3 3/4"
- TOT18: 14 1/4" w X 2" d X 3 3/4"
- Kit includes two white plastic trays and one pair of tilt-out hinges that attaches to the inside of the false panel.
- One tilt-out tray per false panel on cabinets less than 30" wide and greater than 36" wide, two tilt-out trays attached to one false panel on 30"-36" wide cabinets.

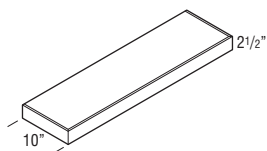


Cab Width	TOT Size	Cabinets
24"	TOT18	SB24, VSB2432.521, VSB243418, VSB243421
27"	TOT18	SB27, SB2732.5, VSB273421
30"	TOT15	SB30, VSB3032.521, VSB303421
33"	TOT15	SB33
36"	TOT18	SB36, VSB3632.521, VSB363421
42"	TOT18	SB42

FLOATING SHELVES

Model	Cubic Feet	Price
FS24	0.5	504
FS30	0.6	566
FS36	0.7	648

- 3/4" thick solid-wood front, back, and ends. 3/8" thick veneered Medium Density Fiberboard (MDF) top and bottom. When a Paint finish is specified, veneer may not be applied. Front and ends are mitered together.
- Includes wood mounting plate with metal brackets. Once installed, mounting system is fully concealed.
- Not trimmable.
- Not available in Classic Bark.

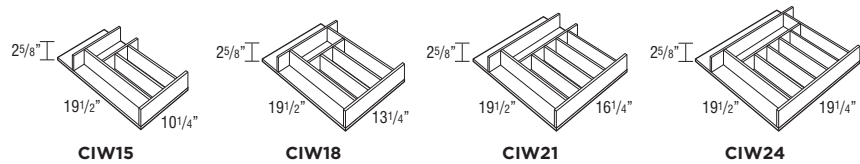


Maximum Weight Capacity per Shelf	
FS24	25 lbs.
FS30	31 lbs.
FS36	37 lbs.

CUTLERY INSERT WOOD ORGANIZER

Model	Cubic Feet	Price
CIW15	1.0	153
CIW18	1.0	164
CIW21	1.0	212
CIW24	1.0	226

- Pre-assembled natural wood drawer insert.
- Place a cabinet with a CIW next to the dishwasher for convenience.



Model	Application
CIW15	15" Base
CIW18	18" Base
CIW21	21" Base
CIW24	24" Base

STAIN & PAINT

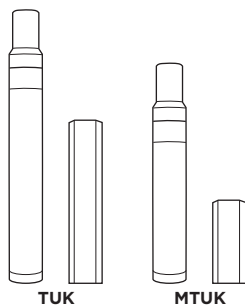
Model	Cubic Feet	Price
PAINTQUART	0.1	132
STAINQRTKIT	0.1	132
SSC	0.1	49
SSCCLEAR	0.1	49

- Wiping stain can be sprayed at low pressure.
- SSC is a 384 mL aerosol can available in Paint colors.
- SSCCLEAR is a 384 mL aerosol can in clear.

TOUCH-UP KIT

Model	Cubic Feet	Price
TUK	0.1	69
MTUK	0.1	41

- TUK includes touch-up marker and a fill stick.
- MTUK includes small touch-up marker and a small fill stick.



MANTRA®



**National Forest
Foundation**

Mantra cabinets have a five year limited warranty. For terms & conditions, please visit [mantracabinets.com/warranty](https://www.mantracabinets.com/warranty).

Cabinet Care and Cleaning Instructions: <https://www.masterbrand.com/care-and-cleaning>

Styles, product availability and construction may vary slightly from those shown due to material availability and/or design evolution. Specifications are subject to change without notice. Our customer service team is available if your design requires verification of product availability and specifications.



**Part of the
MasterBrand™
Family**

[mantracabinets.com](https://www.mantracabinets.com)

#MantraCabinets

©2026 MasterBrand Cabinets LLC. All rights reserved.

Customer Service

mantracs@masterbrand.com

844-846-4572