

MANTRATM

PRICING & SPECIFICATIONS

April 2019

Supersedes all prior versions

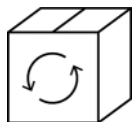
SPEED. SERVICE. QUALITY.

TABLE OF CONTENTS

Customer Experience	1
Product Specifications	2
Door Styles	3-5
How To Order Mantra	6
Wall Cabinets	7-21
Base Cabinets	22-34
Universal Design Cabinets	35-42
Tall Cabinets	43-48
Vanity Cabinets	49-53
Fillers	54-56
Skins	57-58
Panels	59-60
Mouldings	61-67
Accessories	68-71
Hinges	72-74
Index by Description	75
Index by Code	76

MANTRA™

CABINETS FAST



Cycle Ship *Northeast only*

Orders are delivered within a 4-6 business day lead time based on a cycle ship calendar



Truckload

10-15 business day lead time

SERVICE MATTERS

As part of the MasterBrand family, we believe our industry leading service will set Mantra apart. This is our pledge to every partner.



Consistent Support

We will be there to help before, during and after the sale.



Personal Support

We will actually listen and work together to support your unique needs.



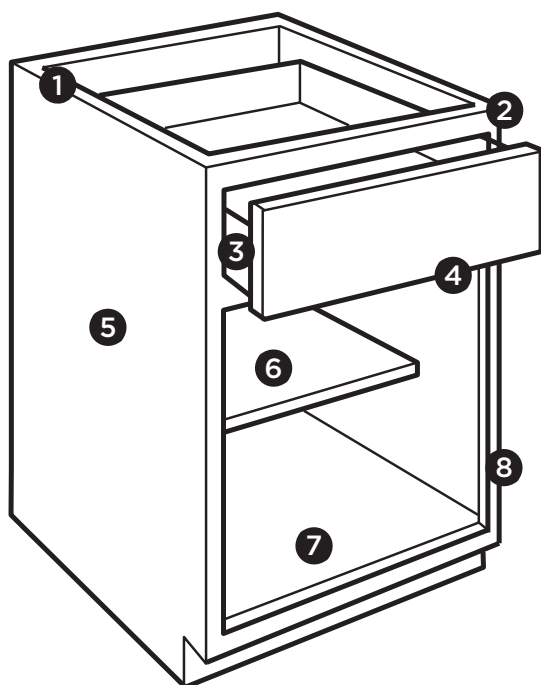
Proven Commitment

We will use our extensive knowledge and years of experience to help every partner success.

QUALITY ABOVE

We strive to deliver beyond your expectations. That's why popular features like all-plywood construction and soft-close come standard with every Mantra cabinet. Say goodbye to the hassle of upgrades and added costs for your customers.

PRODUCT SPECIFICATIONS










- 1 1/2" Plywood ends, 3/8" top and bottom
- 2 3/4" Hardwood frame, doors and drawer fronts
- 3 5/8" Solid wood dovetail drawer box
- 4 Soft-closing, undermount, full extension drawer guides
- 5 Matching laminate exterior
- 6 3/4" Plywood shelves with natural maple laminate
- 7 Natural maple laminate interior
- 8 Soft-closing, 6-way adjustable hinges

Cabinet Care and Cleaning Instructions:
<https://www.masterbrand.com/care-and-cleaning>

For installation and warranty information, visit: mantracabinets.com

PRICE AND STYLE CODE INFORMATION

	1	2	3	4	5	6	
	Classic Stain	Classic Paint	Omni Stain	Omni Paint	Spectra Stain	Spectra Paint	Spectra Paint
	Bark	Snow	Bark	Snow	Bark	Snow	Mineral
							
Style Code	320	321	322	323	324	325	326
Common Style Code -Items with stain/paint price (Ex. Moulding)	310	311	310	311	310	311	312
Miscellaneous Code -Items with one price (Ex. Roll Trays)	300	300	300	300	300	300	300



CLASSIC

Partial Overlay • Shaker • 2 1/4" Rail • Slab drawer front



Bark
Style Code 320
Price Group 1



Snow
Style Code 321
Price Group 2



OMNI

Full Overlay • Shaker • 2 1/4" Rail • 5-piece drawer front



Bark
Style Code 322
Price Group 3



Snow
Style Code 323
Price Group 4



SPECTRA

Full Overlay • Transitional • 3" Rail • 5-piece drawer front



Bark
Style Code 324
Price Group 5



Mineral
Style Code 326
Price Group 6



Snow
Style Code 325
Price Group 6

MANTRA order

All orders will be placed electronically using MBCI1Touch / Mantra Order:

- Electronic entry and order management
- 2020 Design direct order upload

Mantra Order is an easy-to-navigate order management system that enables users to enter, review, edit, copy, and submit orders intuitively.

Electronic orders are picked eight times daily, Monday through Friday (excluding holidays):

- 6:00, 7:30, 8:30, 9:30, and 10:30 AM EST
- 1:00, 2:30, and 3:30 PM EST

★ Order Acknowledgement will be sent the day after order receipt

★ Delivery notification will be sent to dealer once load is assigned

★ Shipments will be delivered Monday through Friday between the hours of 7:00 AM and 4:00 PM local time

4-6 business day Cycle Ship delivery is available in the Northeast.

- Mantra Cycle Ship cut off is 10:30 AM EST
- See Mantra Cycle Ship schedule on MBCI1Touch

Truckload orders ship in 10-15 business days.

Service Policies are posted on MBCI1Touch.

TABLE OF CONTENTS – WALL CABINETS

**12" Deep Wall**

12" High	8
15" High	8
18" High	9
24" High	9
30" High	10
36" High	12
42" High	14

24" Deep Wall

12" High	15
18" High	16
24" High	16

12" Deep Wall Corner

30" High	17
36" High	18
42" High	19

12" Deep Diagonal Wall

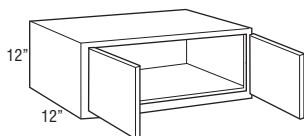
30" High	20
36" High	20
42" High	21

WALL DOUBLE DOOR

12" High

12" Deep

Model	Cubic Feet	1	2	3	4	5	6
W3012	3.4	148	153	174	181	200	209
W3312	3.7	167	176	197	207	228	237
W3612	4.0	195	204	230	240	263	277

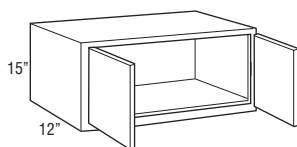


WALL DOUBLE DOOR

15" High

12" Deep

Model	Cubic Feet	1	2	3	4	5	6
W3015	3.9	176	183	204	216	235	247
W3315	4.2	190	200	226	235	259	273
W3615	4.6	207	219	244	256	282	296

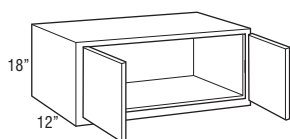


WALL DOUBLE DOOR

18" High

12" Deep

Model	Cubic Feet	1	2	3	4	5	6
W3018	4.9	207	219	244	256	282	296
W3318	5.3	219	230	256	270	296	310
W3618	5.8	223	233	261	275	301	315



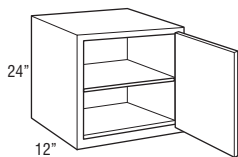
WALL SINGLE DOOR

24" High

12" Deep

Model	Cubic Feet	1	2	3	4	5	6
W2124R	4.6	195	204	230	240	263	277

• Cabinet hinged on the right; may be flipped for left hinge application.

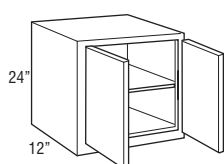


WALL DOUBLE DOOR

24" High

12" Deep

Model	Cubic Feet	1	2	3	4	5	6
W2424	5.2	209	221	247	259	284	298
W3024	6.4	233	244	275	287	315	331
W3324	7.0	249	261	291	308	336	353
W3624	7.6	259	273	306	320	350	367



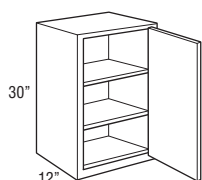
WALL SINGLE DOOR

30" High

12" Deep

Model	Cubic Feet	1	2	3	4	5	6
W930R	2.6	162	172	190	200	219	230
W1230R	3.4	169	176	200	209	230	240
W1530R	4.1	176	186	209	221	242	256
W1830R	4.9	193	202	228	237	261	275
W2130R	5.6	207	219	244	256	282	296

• Cabinet hinged on the right; may be flipped for left hinge application.

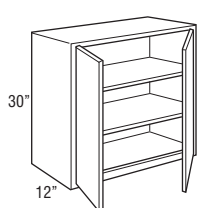


WALL DOUBLE DOOR

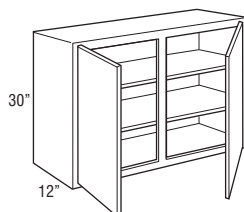
30" High

12" Deep

Model	Cubic Feet	1	2	3	4	5	6
W2430	6.4	228	237	266	280	306	320
W2730	7.2	251	263	296	310	341	360
W3030	7.9	261	275	308	322	353	369
W3330	8.7	287	303	338	355	388	407
W3630	9.4	298	313	350	367	402	421
W4230	11.0	327	343	385	404	444	465



W2430-W3630



W4230

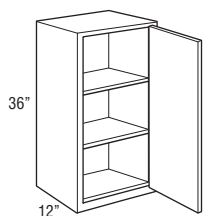
WALL SINGLE DOOR

36" High

12" Deep

Model	Cubic Feet	1	2	3	4	5	6
W936R	3.1	188	197	221	230	254	266
W1236R	4.0	197	207	230	242	266	280
W1536R	4.9	202	214	240	254	277	289
W1836R	5.8	223	233	261	275	301	315
W2136R	6.7	240	254	284	298	327	343

- Cabinet hinged on the right; may be flipped for left hinge application.

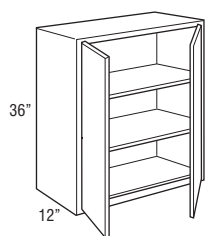


WALL DOUBLE DOOR

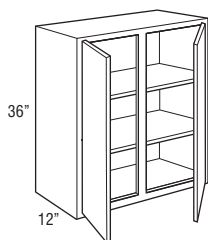
36" High

12" Deep

Model	Cubic Feet	1	2	3	4	5	6
W2436	7.6	263	277	310	327	360	376
W2736	8.5	289	306	341	360	392	414
W3036	9.4	303	317	357	374	411	432
W3336	10.3	336	353	392	414	451	472
W3636	11.2	345	364	407	425	468	491
W4236	13.1	388	407	454	477	524	550



W2436-W3636



W4236

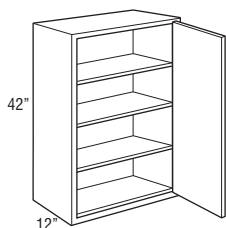
WALL SINGLE DOOR

42" High

12" Deep

Model	Cubic Feet	1	2	3	4	5	6
W942R	3.6	212	223	249	261	284	301
W1242R	4.6	223	233	261	275	301	315
W1542R	5.7	237	251	280	291	320	336
W1842R	6.7	254	266	298	313	343	362
W2142R	7.8	277	289	324	341	374	392

- Cabinet hinged on the right; may be flipped for left hinge application.

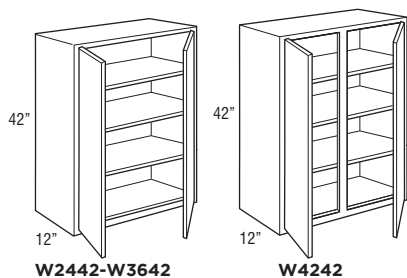


WALL DOUBLE DOOR

42" High

12" Deep

Model	Cubic Feet	1	2	3	4	5	6
W2442	8.8	298	313	350	367	402	421
W2742	9.9	329	345	388	407	447	468
W3042	11.0	345	364	407	425	468	491
W3342	12.0	381	400	447	470	515	541
W3642	13.1	392	411	461	484	529	555
W4242	15.2	437	458	515	541	592	623



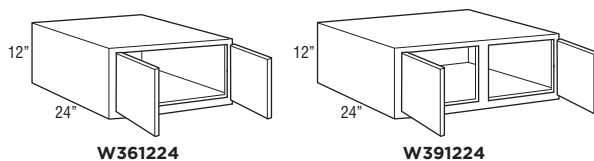
WALL DOUBLE DOOR

12" High

24" Deep

Model	Cubic Feet	1	2	3	4	5	6
W361224	7.4	235	247	277	289	317	334
W391224	7.9	256	270	303	317	348	364

- 24" deep cabinets must be fully supported by screws installed in a structural member in the ceiling or soffit, and into adjacent cabinets.
- Load limit is 15 lbs. per square foot of load bearing surface.



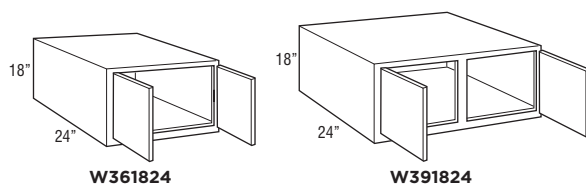
WALL DOUBLE DOOR

18" High

24" Deep

Model	Cubic Feet	1	2	3	4	5	6
W361824	10.7	256	268	301	315	345	364
W391824	11.5	266	280	313	329	362	378

- 24" deep cabinets must be fully supported by screws installed in a structural member in the ceiling or soffit, and into adjacent cabinets.
- Load limit is 15 lbs. per square foot of load bearing surface.



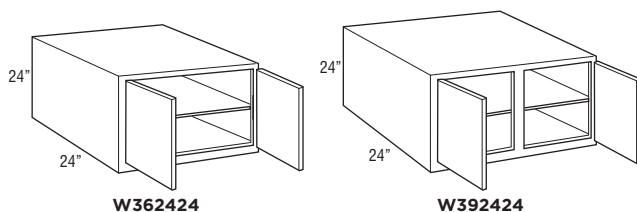
WALL DOUBLE DOOR

24" High

24" Deep

Model	Cubic Feet	1	2	3	4	5	6
W362424	14.0	289	306	341	360	392	414
W392424	15.1	315	331	371	392	428	449

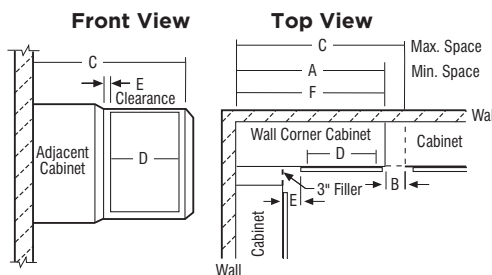
- 24" deep cabinets must be fully supported by screws installed in a structural member in the ceiling or soffit, and into adjacent cabinets.
- Load limit is 15 lbs. per square foot of load bearing surface.



WALL CORNER CABINETS

SKU	A Min. Space	B Max. Pull	C Max. Space	D Cabinet Opening	E Full Overlay		E Partial Overlay		F Actual Cabinet
WC30...	30"	5"	35"	13 1/2"	At Min.	At Max.	At Min.	At Max.	30"
WC36...	36"	5"	41"	19 1/2"	1 3/4"	6 3/4"	2 1/2"	7 1/2"	36"
WC42...	42"	4 1/2"	46 1/2"	24"	3 1/4"	7 3/4"	4"	8 1/2"	42"

- Wall corner cabinets may be installed flush to the wall (left) or pulled 3" away from wall (right) to accommodate add dimensions in a kitchen design. In either case, the adjoining run of 12" wall cabinets plus a 3" filler will butt against the solid-wood panel.
- When a cabinet is "pulled" it will use proportionally more space, for example, a 30" wide WC, pulled 2" will use 32" of space.
- Blind side of wall corner cabinets cannot be installed next to a range hood unit due to door interference.



NOTE:

All outside stiles are 1 1/2" wide

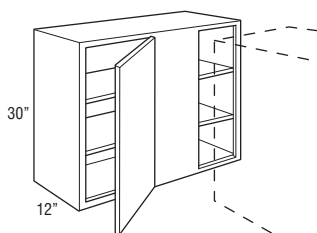
WALL CORNER SINGLE DOOR

30" High

12" Deep

Model	Cubic Feet	1	2	3	4	5	6
WC3030S	7.9	228	237	266	280	306	320
WC3630S	9.4	251	263	294	310	338	355

- Right blind shown; cabinet may be flipped for left blind application.
- Filler required for installation. Must be ordered separately.



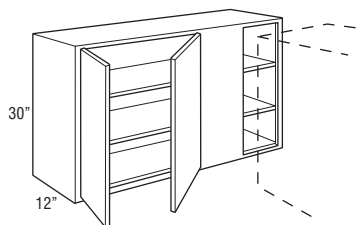
WALL CORNER DOUBLE DOOR

30" High

12" Deep

Model	Cubic Feet	1	2	3	4	5	6
WC4230S	11.0	289	306	341	360	392	414

- Right blind shown; cabinet may be flipped for left blind application.
- Filler required for installation. Must be ordered separately.



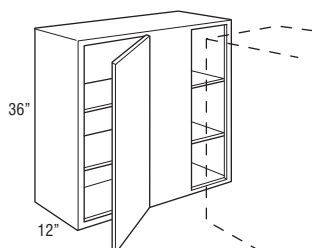
WALL CORNER SINGLE DOOR

36" High

12" Deep

Model	Cubic Feet	1	2	3	4	5	6
WC3036S	9.4	275	287	322	338	369	390
WC3636S	11.2	298	313	350	367	402	421

- Right blind shown; cabinet may be flipped for left blind application.
- Filler required for installation. Must be ordered separately.



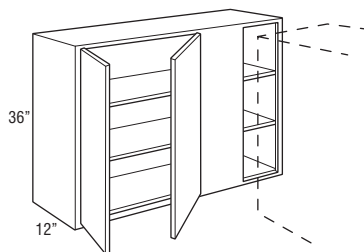
WALL CORNER DOUBLE DOOR

36" High

12" Deep

Model	Cubic Feet	1	2	3	4	5	6
WC4236S	13.1	324	341	381	400	437	458

- Right blind shown; cabinet may be flipped for left blind application.
- Filler required for installation. Must be ordered separately.



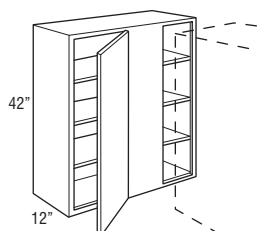
WALL CORNER SINGLE DOOR

42" High

12" Deep

Model	Cubic Feet	1	2	3	4	5	6
WC3042S	11.0	308	322	362	378	416	437
WC3642S	13.1	336	353	392	414	451	472

- Right blind shown; cabinet may be flipped for left blind application.
- Filler required for installation. Must be ordered separately.



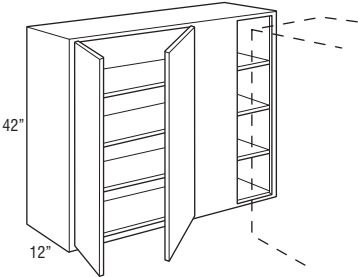
WALL CORNER DOUBLE DOOR

42" High

12" Deep

Model	Cubic Feet	1	2	3	4	5	6
WC4242S	15.2	364	381	428	449	494	517

- Right blind shown; cabinet may be flipped for left blind application.
- Filler required for installation. Must be ordered separately.



DIAGONAL WALL

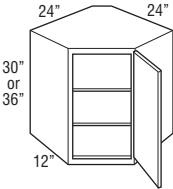
30" High

36" High

12" Deep

Model	Cubic Feet	1	2	3	4	5	6
DW302424R	10.8	261	275	308	322	353	369
DW362424R	12.9	313	329	369	390	425	447

- Cabinet hinged on the right; may be flipped for left hinge application.
- Cabinets require 24" x 24" of corner wall space.



DIAGONAL WALL

42" High

12" Deep

Model	Cubic Feet	1	2	3	4	5	6
DW422424R	14.9	378	397	447	468	512	538

- Cabinet hinged on the right; may be flipped for left hinge application.
- Cabinets require 24" x 24" of corner wall space.

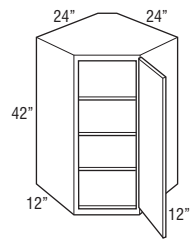


TABLE OF CONTENTS – BASE CABINETS



34 1/2" High, 24" Deep

Base with Drawer23

Full Height Base24

Drawer Base25

Base Wastebasket27

Sink Base28

Base Sink Removable31

Base Corner32

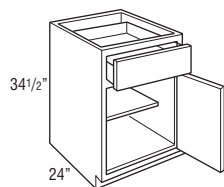
BASE SINGLE DOOR

34½" High

24" Deep

Model	Cubic Feet	1	2	3	4	5	6
B9R	5.4	195	204	230	240	263	277
B12R	7.1	209	221	247	259	284	298
B15R	8.7	228	237	266	280	306	320
B18R	10.3	244	256	287	303	331	348
B21R	11.7	263	277	310	327	360	376

- Cabinet hinged on the right; door may be flipped for left hinge application.
- Roll tray kits available for 15"-21" widths.



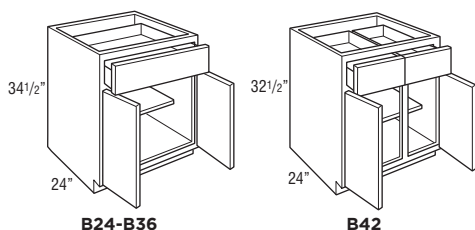
BASE DOUBLE DOOR

34½" High

24" Deep

Model	Cubic Feet	1	2	3	4	5	6
B24	13.3	306	320	360	376	414	435
B27	14.9	329	345	388	407	447	468
B30	16.5	355	371	418	439	479	503
B33	18.1	383	402	449	472	517	543
B36	19.6	414	435	486	510	559	588
B42	22.8	447	470	526	552	604	635

- Roll tray kits available for 24"-42" widths.



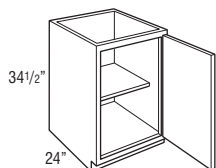
FULL HEIGHT BASE SINGLE DOOR

34½" High

24" Deep

Model	Cubic Feet	1	2	3	4	5	6
B15FHR	8.5	190	200	226	235	259	273
B18FHR	10.1	202	214	240	254	277	289
B21FHR	11.7	214	226	254	266	291	308

- Cabinet hinged on the right; door may be flipped for left hinge application.
- Roll tray kits available for 15"-21" widths.



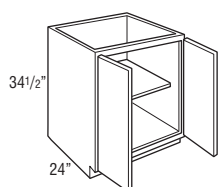
FULL HEIGHT BASE DOUBLE DOOR

34½" High

24" Deep

Model	Cubic Feet	1	2	3	4	5	6
B24FH	13.3	251	263	294	310	338	355
B30FH	16.5	289	306	341	360	392	414
B36FH	19.6	310	327	364	383	418	442

• Roll tray kits available for 24"-36" widths.



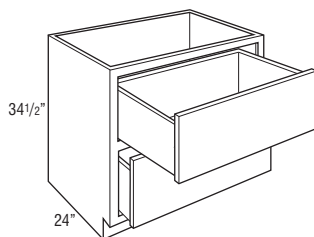
2 DRAWER BASE

34½" High

24" Deep

Model	Cubic Feet	1	2	3	4	5	6
2DB30	16.5	463	486	545	573	627	660
2DB36	19.6	508	533	597	627	686	719

• On door styles with slab drawer fronts, all drawer fronts will be slab.



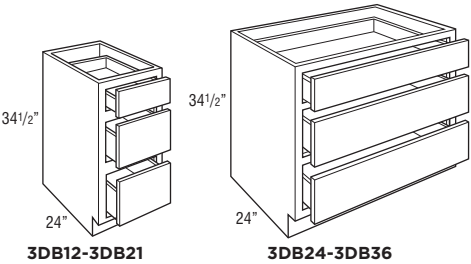
3 DRAWER BASE

34½" High

24" Deep

Model	Cubic Feet	1	2	3	4	5	6
3DB12	7.0	294	310	345	364	397	418
3DB15	8.5	322	338	378	397	435	456
3DB18	10.1	353	369	416	437	477	501
3DB21	11.7	388	407	454	477	524	550
3DB24	13.3	423	447	498	524	573	602
3DB30	16.5	463	486	545	573	627	660
3DB36	19.6	508	533	597	627	686	719

• On door styles with slab drawer fronts, all drawer fronts will be slab.



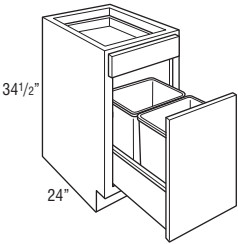
BASE WASTEBASKET

34½" High

24" Deep

Model	Cubic Feet	1	2	3	4	5	6
BWB18	10.3	402	421	472	498	545	573

- Pull-out features undermount full extension, soft-close guides.
- Includes two 35 quart gray wastebaskets.



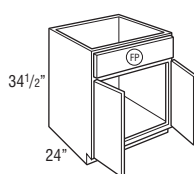
SINK BASE

34½" High

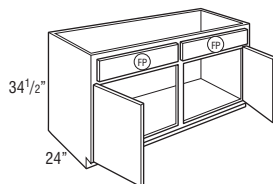
24" Deep

Model	Cubic Feet	1	2	3	4	5	6
SB24	13.3	237	251	280	291	320	336
SB27	14.9	251	263	296	310	341	360
SB30	16.5	263	277	310	324	355	371
SB33	18.1	287	303	338	357	392	411
SB36	19.6	303	317	357	374	411	432
SB42	22.8	320	336	376	395	432	454
SB48CS	26.0	369	390	435	456	501	526

- Mini Touch-Up Kit (MTUK) included. MTUK includes small touch-up marker and small fill stick.
- Tilt-out tray kits available.



SB24-SB36



SB42-SB48CS

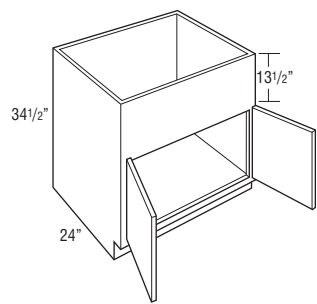
COUNTRY SINK BASE

34 1/2" High

24" Deep

Model	Cubic Feet	1	2	3	4	5	6
CNTYSB36	19.6	378	397	447	468	512	538

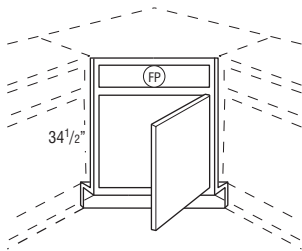
- 13 1/2" panel can be trimmed up to 12".
- Mini Touch-Up Kit (MTUK) included. MTUK includes small touch-up marker and small fill stick.
- Refer to manufacturer's recommendations for additional support required for apron front sinks.



ANGLED CORNER SINK FRONT 34½" High

Model	Cubic Feet	1	2	3	4	5	6
ACSF36R	2.9	190	200	226	235	259	273
ACSF42*	3.9	202	214	240	254	277	289

- Frame edges beveled at 45°.
 - Toekick and toekick retainer shipped unattached from the face frame.
 - Sink base floor not included.
- *ACSF42 has butt doors.



Max. Sink Widths if cut-out is 4" back from face of front frame

Wall Width	Frame	Maximum Sink Width	Maximum Sink Depth
36" x 36"	17"	25 3/4"	27 11/32"
42" x 42"	25 1/2"	34 1/4"	27 11/32"

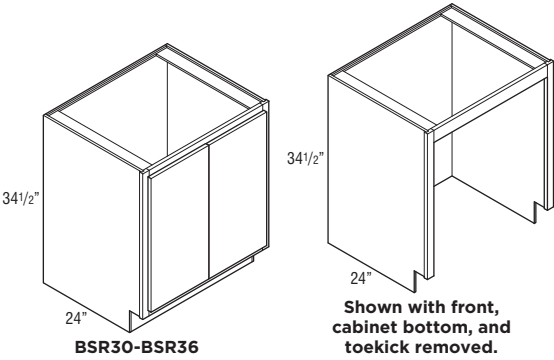
BASE SINK REMOVABLE

34½" High

24" Deep

Model	Cubic Feet	1	2	3	4	5	6
BSR30	13.7	214	226	254	266	291	308
BSR36	16.4	228	237	266	280	306	320

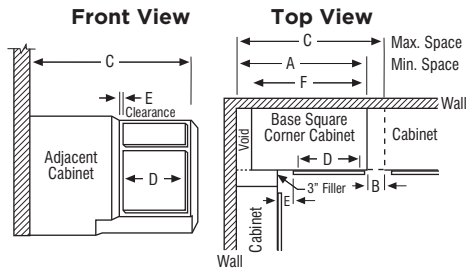
- Cabinet must supported on both sides. Not intended for end of run.
- Front, cabinet bottom, and toekick are removable.
- Tilt-out tray kits available.
- Mini Touch-Up Kit (MTUK) included. MTUK includes small touch-up marker and small fill stick.
- Available in Classic Bark & Omni Snow.



BASE CORNER CABINETS

SKU	A Min. Space	B Max. Pull	C Max. Space	D Cabinet Opening	E Full Overlay		E Partial Overlay		F Actual Cabinet
BC36S	36"	6"	42"	7 1/2"	At Min.	At Max.	At Min.	At Max.	27"
BC42S	42"	6"	48"	13 1/2"	1 3/4"	7 3/4"	2 1/2"	8 1/2"	39"
BC48S	48"	3"	51"	16 1/2"	4 3/4"	7 3/4"	5 1/2"	8 1/2"	45"

- BCs use the wall space the nomenclature implies and may be pulled up to 3" to accommodate odd dimensions in a kitchen.
- Remember to use 3" filler on adjoining cabinets.
- The adjoining run of cabinets will cover the void.
- The L or R in the cabinet nomenclature indicates the location of the void to ensure clearance; it is not recommended to place BC cabinets next to 27" deep appliances.



NOTE:

Full overlay styles must be pulled an additional 1 1/2" to ensure proper drawer/pull clearance. 1 1/2" pull is not included in minimum and maximum list.

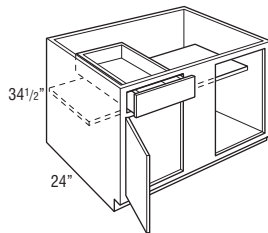
BASE CORNER SINGLE DOOR

34 1/2" High

24" Deep

Model	Cubic Feet	1	2	3	4	5	6
BC36S	15.0	287	303	338	357	392	411
BC42S	21.3	324	341	383	402	442	463
BC48S	24.5	378	397	447	468	512	538

- Right blind shown; door and drawer can be reversed for left blind application.
- Filler required for installation. Must be ordered separately.



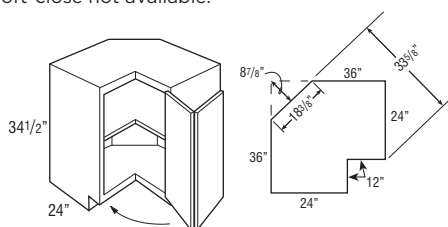
BASE EASY REACH

34 1/2" High

24" Deep

Model	Cubic Feet	1	2	3	4	5	6
BER36R	29.1	477	501	562	590	646	679

- Wall width is 36" x 36".
- Decorative hardware screws must be countersunk to prevent scratching of adjacent cabinets and face frame of BER.
- Not recommended for use next to an appliance deeper than standard cabinet depth.
- Soft-close not available.



Due to the fixed shelves mounting shelves cannot be retrofitted.

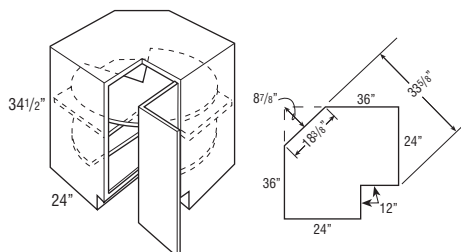
SUPER LAZY SUSAN

34 1/2" High

24" Deep

Model	Cubic Feet	1	2	3	4	5	6
SLS36R	29.1	604	635	710	743	815	855

- Wall width is 36" x 36".
- Features two plywood revolving shelves. Lower shelf is mounted to floor. Upper shelf is mounted to fixed shelf.
- Decorative hardware screws must be countersunk to prevent scratching adjacent cabinets and face frame of SLS.
- Not recommended for use next to an appliance deeper than standard cabinet depth.
- Soft-close not available.



Due to the fixed shelves mounting shelves cannot be retrofitted.

BASE LAZY SUSAN

34 1/2" High 24" Deep

Model	Cubic Feet	1	2	3	4	5	6
BLS36R	20.4	430	451	505	531	580	609

- Wall width is 36" x 36".
- Cabinet is drum-shaped; adjoining cabinets create sides.
- Features two white plastic shelves.
- Decorative hardware screws must be countersunk to prevent scratching of adjacent cabinets and face frame of BLS.
- Not recommended for use next to an appliance deeper than standard cabinet depth.
- Soft-close not available.

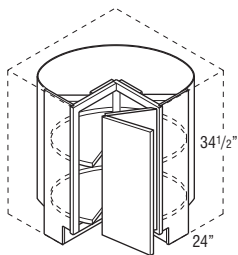
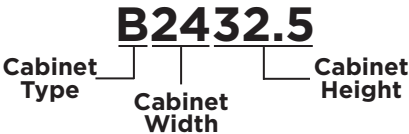


TABLE OF CONTENTS - UNIVERSAL DESIGN CABINETS



34 1/2" High, 24" Deep

Universal Design Base36

Universal Design Drawer Base38

Universal Design Sink Base39

Universal Design Base Sink Removable40

Universal Design Base Corner41

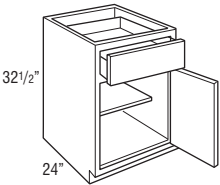
UNIVERSAL DESIGN, BASE SINGLE DOOR

32½" High

24" Deep

Model	Cubic Feet	1	2	3	4	5	6
B932.5R	5.0	195	•	•	240	•	•
B1232.5R	6.5	209	•	•	259	•	•
B1532.5R	8.0	228	•	•	280	•	•
B1832.5R	9.4	244	•	•	303	•	•
B2132.5R	10.9	263	•	•	327	•	•

- Cabinet hinged on the right; door may be flipped for left hinge application.
- Roll tray kits available for 15"-21" widths.
- Available on Classic Bark & Omni Snow.



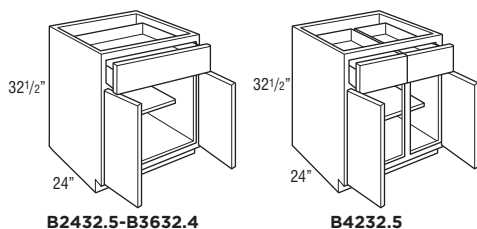
UNIVERSAL DESIGN, BASE DOUBLE DOOR

32 $\frac{1}{2}$ " High

24" Deep

Model	Cubic Feet	1	2	3	4	5	6
B2432.5	12.4	306	•	•	376	•	•
B2732.5	13.8	329	•	•	407	•	•
B3032.5	15.3	355	•	•	439	•	•
B3332.5	16.8	383	•	•	472	•	•
B3632.5	18.3	414	•	•	510	•	•
B4232.5	21.2	447	•	•	552	•	•

- Roll tray kits available for 24"-42" widths.
- Available on Classic Bark & Omni Snow.



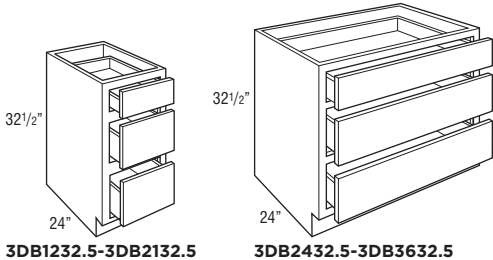
UNIVERSAL DESIGN, 3 DRAWER BASE

32½" High

24" Deep

Model	Cubic Feet	1	2	3	4	5	6
3DB1232.5	6.3	294	•	•	364	•	•
3DB1532.5	8.0	322	•	•	397	•	•
3DB1832.5	9.4	353	•	•	437	•	•
3DB2132.5	10.9	388	•	•	477	•	•
3DB2432.5	12.4	423	•	•	524	•	•
3DB3032.5	16.5	463	•	•	573	•	•
3DB3632.5	19.6	508	•	•	627	•	•

- On door styles with slab drawer fronts, all drawer fronts will be slab.
- Available on Classic Bark & Omni Snow.



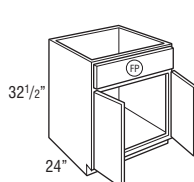
UNIVERSAL DESIGN, SINK BASE

32½" High

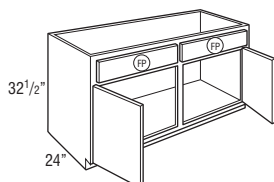
24" Deep

Model	Cubic Feet	1	2	3	4	5	6
SB2432.5	12.6	237	•	•	291	•	•
SB2732.5	14.1	251	•	•	310	•	•
SB3032.5	15.3	263	•	•	324	•	•
SB3332.5	17.1	287	•	•	357	•	•
SB3632.5	18.6	303	•	•	374	•	•
SB4232.5	21.6	320	•	•	395	•	•
SB4832.5CS	24.6	369	•	•	456	•	•

- Mini Touch-Up Kit (MTUK) included. MTUK includes small touch-up marker and small fill stick.
- Tilt-out tray kits available.
- Available on Classic Bark & Omni Snow.



SB2432.5-SB3632.5



SB4232.5-SB4832.5CS

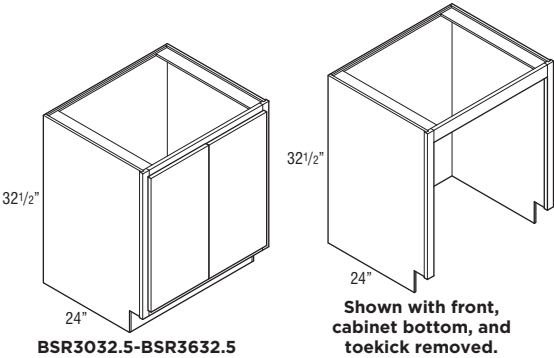
UNIVERSAL DESIGN, BASE SINK REMOVABLE

32 1/2" High

24" Deep

Model	Cubic Feet	1	2	3	4	5	6
BSR3032.5	13.7	214	•	•	266	•	•
BSR3632.5	16.4	228	•	•	280	•	•

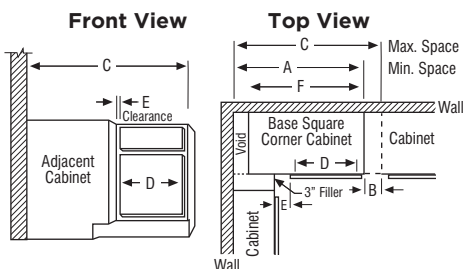
- Cabinet must supported on both sides. Not intended for end of run.
- Front, cabinet bottom, and toekick are removable.
- Tilt-out tray kits available.
- Mini Touch-Up Kit (MTUK) included.
- MTUK includes small touch-up marker and small fill stick.
- Available in Classic Bark & Omni Snow



UNIVERSAL DESIGN CORNER CABINETS

SKU	A Min. Space	B Max. Pull	C Max. Space	D Cabinet Opening	E Full Overlay At Min. At Max.		E Partial Overlay At Min. At Max.		F Actual Cabinet
BC3632.5S	32"	6"	42"	7 1/2"	1 3/4"	7 3/4"	2 1/2"	8 1/2"	27"
BC4232.5S	42"	6"	48"	13 1/2"	1 3/4"	7 3/4"	2 1/2"	8 1/2"	39"
BC4832.5S	48"	3"	51"	16 1/2"	4 3/4"	7 3/4"	5 1/2"	8 1/2"	45"

- BCs use the wall space the nomenclature implies and may be pulled up to 3" to accommodate odd dimensions in a kitchen.
- Remember to use 3" filler on adjoining cabinets.
- The adjoining run of cabinets will cover the void.
- The L or R in the cabinet nomenclature indicates the location of the void to ensure clearance; it is not recommended to place BC cabinets next to 27" deep appliances.



NOTE:

Full overlay styles must be pulled an additional 1 1/2" to ensure proper drawer/pull clearance. 1 1/2" pull is not included in minimum and maximum list.

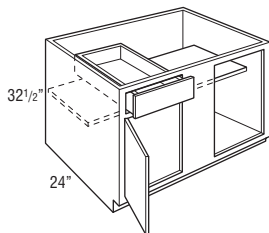
UNIVERSAL DESIGN, BASE CORNER SINGLE DOOR

32 1/2" High

24" Deep

Model	Cubic Feet	1	2	3	4	5	6
BC3632.5S	14.1	287	•	•	357	•	•
BC4232.5S	18.3	324	•	•	402	•	•
BC4832.5S	22.7	378	•	•	468	•	•

- Right blind shown; door and drawer can be reversed for left blind application.
- Filler required for installation. Must be ordered separately.
- Available on Classic Bark & Omni Snow.



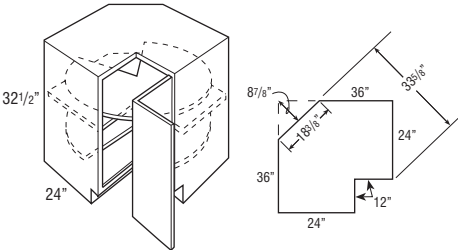
UNIVERSAL DESIGN, SUPER LAZY SUSAN

32 1/2" High

24" Deep

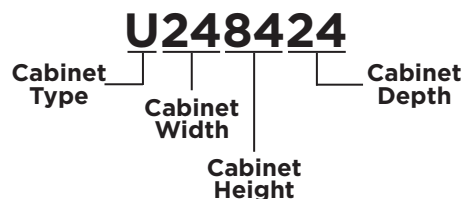
Model	Cubic Feet	1	2	3	4	5	6
SLS3632.5R	18.4	604	•	•	743	•	•

- Wall width is 36" x 36".
- Features two plywood revolving shelves. Lower shelf is mounted to floor. Upper shelf is mounted to fixed shelf.
- Decorative hardware screws must be countersunk to prevent scratching adjacent cabinets and face frame of SLS.
- Not recommended for use next to an appliance deeper than standard cabinet depth.
- Soft-close not available.
- Available on Classic Bark & Omni Snow.



Due to the fixed shelves mounting shelves cannot be retrofitted.

TABLE OF CONTENTS – TALL CABINETS

**24" Deep Utility Single Door**

84" High	44
90" High	44
96" High	45

24" Deep Utility Double Door

84" High	45
90" High	46
96" High	46

24" Deep Single Oven 3 Drawers

84" High	47
90" High	47
96" High	48

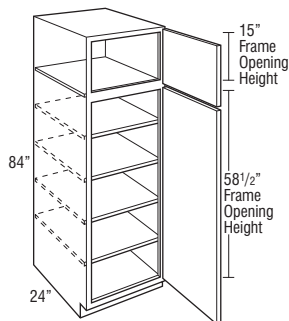
UTILITY SINGLE DOOR

84" High

24" Deep

Model	Cubic Feet	1	2	3	4	5	6
U188424R	23.4	541	569	635	667	731	768

- Roll tray kits available.



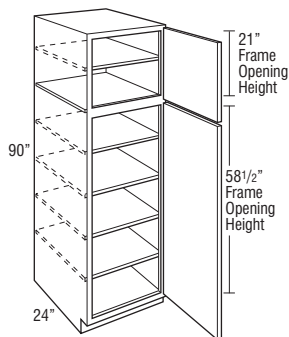
UTILITY SINGLE DOOR

90" High

24" Deep

Model	Cubic Feet	1	2	3	4	5	6
U189024R	25.4	604	635	710	743	815	855

- Roll tray kits available.



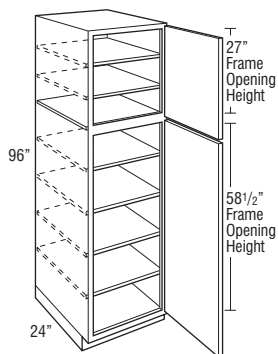
UTILITY SINGLE DOOR

96" High

24" Deep

Model	Cubic Feet	1	2	3	4	5	6
U189624R	27.0	672	707	792	830	909	956

- Separate pedestal base included on 96" tall.
- Roll tray kits available.



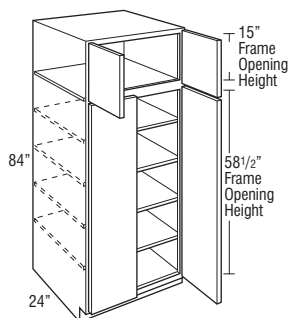
UTILITY DOUBLE DOOR

84" High

24" Deep

Model	Cubic Feet	1	2	3	4	5	6
U248424	30.9	660	691	776	815	893	938

- Roll tray kits available.



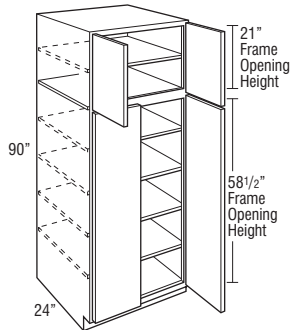
UTILITY DOUBLE DOOR

90" High

24" Deep

Model	Cubic Feet	1	2	3	4	5	6
U249024	33.4	740	776	870	912	999	1048

- Roll tray kits available.



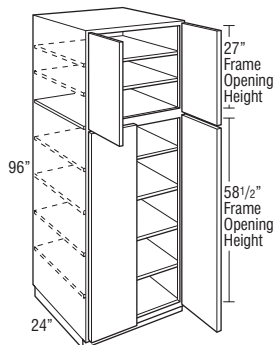
UTILITY DOUBLE DOOR

96" High

24" Deep

Model	Cubic Feet	1	2	3	4	5	6
U249624	35.6	827	870	973	1022	1121	1175

- Separate pedestal base included on 96" tall.
- Roll tray kits available.



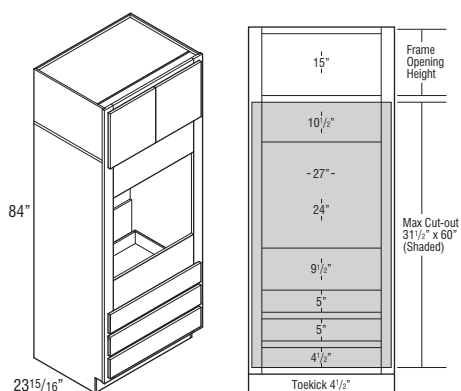
SINGLE OVEN 3 DRAWERS

84" High

24" Deep

Model	Cubic Feet	1	2	3	4	5	6
OC3D338424	47.7	860	905	1013	1062	1163	1222

- Oven cabinets feature an open back in cut-out area designed to improve field appliance installation.
- Metal appliance support brackets included for 24" deep cabinets.
- Confirm a heat shield is built into your appliance by the manufacturer.



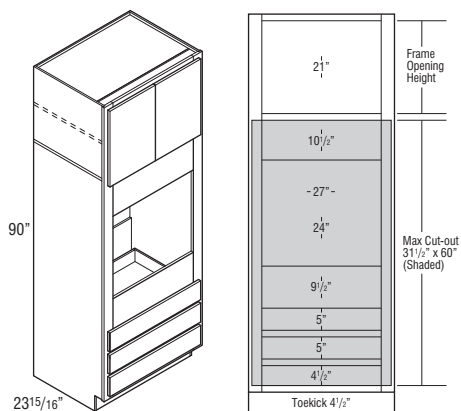
SINGLE OVEN 3 DRAWERS

90" High

24" Deep

Model	Cubic Feet	1	2	3	4	5	6
OC3D339024	51.0	1011	1060	1187	1246	1365	1434

- Oven cabinets feature an open back in cut-out area designed to improve field appliance installation.
- Metal appliance support brackets included for 24" deep cabinets.
- Confirm a heat shield is built into your appliance by the manufacturer.



SINGLE OVEN 3 DRAWERS

96" High

24" Deep

Model	Cubic Feet	1	2	3	4	5	6
OC3D339624	54.3	1137	1194	1337	1405	1539	1617

- Oven cabinets feature an open back in cut-out area designed to improve field appliance installation.
- Metal appliance support brackets included for 24" deep cabinets.
- Separate pedestal base included on 96" tall.
- Confirm a heat shield is built into your appliance by the manufacturer.

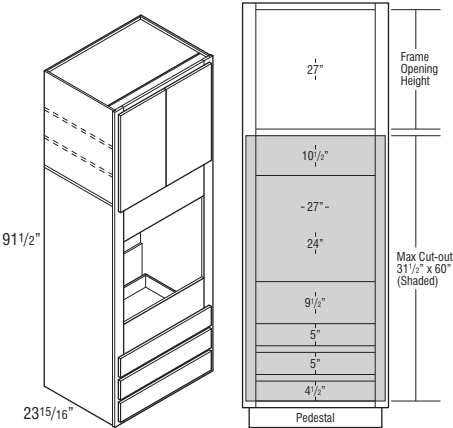
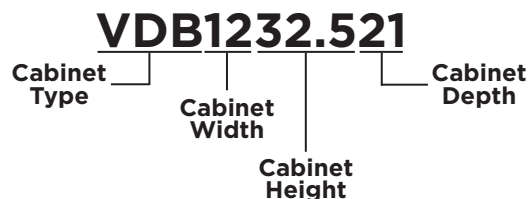


TABLE OF CONTENTS - VANITY CABINETS



32 1/2" High, 21" Deep

Vanity Base with Drawer	50
Vanity Drawer Base	50
Vanity Sink Base	51

34 1/2" High, 21" Deep

Vanity Base	51
Vanity Drawer Base	52
Vanity Sink Base	52
Vanity Sink Drawer Base	53

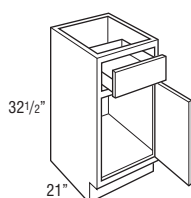
VANITY BASE SINGLE DOOR

32½" High

21" Deep

Model	Cubic Feet	1	2	3	4	5	6
VB1232.521R	5.7	202	214	240	254	277	289
VB1532.521R	7.1	219	230	256	270	296	310
VB1832.521R	8.4	237	251	280	291	320	336

- Cabinet hinged on the right; door may be flipped for left hinge application.



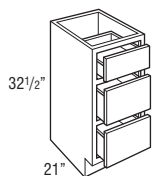
VANITY DRAWER BASE

32½" High

21" Deep

Model	Cubic Feet	1	2	3	4	5	6
VDB1232.521	5.7	284	301	336	353	385	404
VDB1532.521	7.1	313	329	367	388	423	447
VDB1832.521	8.4	341	360	402	421	463	486

- On door styles with slab drawer fronts, all drawer fronts will be slab.



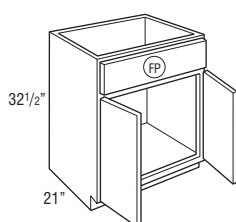
VANITY SINK BASE

32½" High

21" Deep

Model	Cubic Feet	1	2	3	4	5	6
VSB2432.521	11.0	230	240	270	284	310	327
VSB3032.521	13.7	256	268	301	315	345	364
VSB3632.521	16.3	294	310	345	364	397	418

- Tilt-out tray kits available.



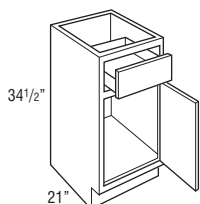
VANITY BASE SINGLE DOOR

34½" High

21" Deep

Model	Cubic Feet	1	2	3	4	5	6
VB123421R	6.2	202	214	240	254	277	289
VB153421R	7.6	219	230	256	270	296	310
VB183421R	9.0	237	251	280	291	320	336

- Cabinet hinged on the right; door may be flipped for left hinge application.



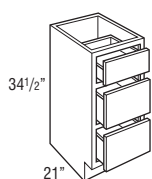
VANITY DRAWER BASE

34½" High

21" Deep

Model	Cubic Feet	1	2	3	4	5	6
VDB123421	6.2	284	301	336	353	385	404
VDB153421	7.6	313	329	367	388	423	447
VDB183421	8.9	341	360	402	421	463	486

- On door styles with slab drawer fronts, all drawer fronts will be slab.



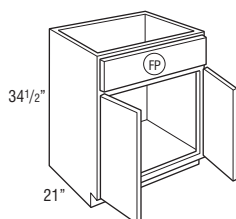
VANITY SINK BASE

34½" High

21" Deep

Model	Cubic Feet	1	2	3	4	5	6
VSB243421	11.9	230	240	270	284	310	327
VSB303421	14.7	256	268	301	315	345	364
VSB363421	17.5	294	310	345	364	397	418

- Tilt-out tray kits available.



VANITY SINK DRAWER BASE

34½" High

21" Deep

Model	Cubic Feet	1	2	3	4	5	6
2VSD363421	17.4	392	411	461	484	529	555
2VSD423421	20.3	423	447	501	526	576	604
2VSD483421CS	23.1	465	489	548	576	630	663

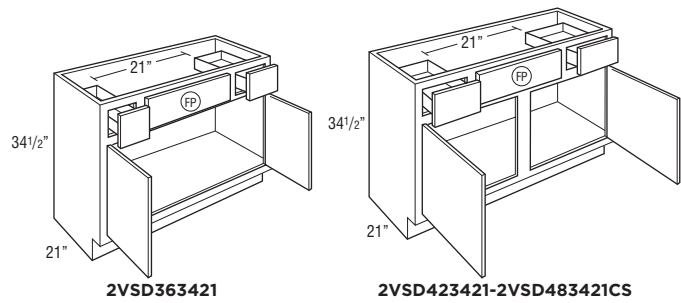


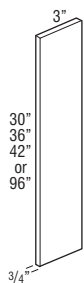
TABLE OF CONTENTS – FILLERS, PANELS, SKINS, & MOULDING

Fillers	55
Skins	57
Panels	59
Crown Moulding	61
Starter Moulding	63
Accent Moulding	63
Corner Moulding	65
Toeboard	66
Straight Valance	67

3" FILLER

Model	Cubic Feet	Stain	Paint
F330	0.2	28	31
F336	0.2	33	35
F342	0.2	35	38
TF396	0.5	82	87

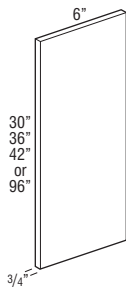
- 3/4" thick.
- Finished on front and all edges (backs are not finished).



6" FILLER

Model	Cubic Feet	Stain	Paint
F630	0.2	56	59
F636	0.2	61	63
F642	0.2	68	71
TF696	0.5	132	139

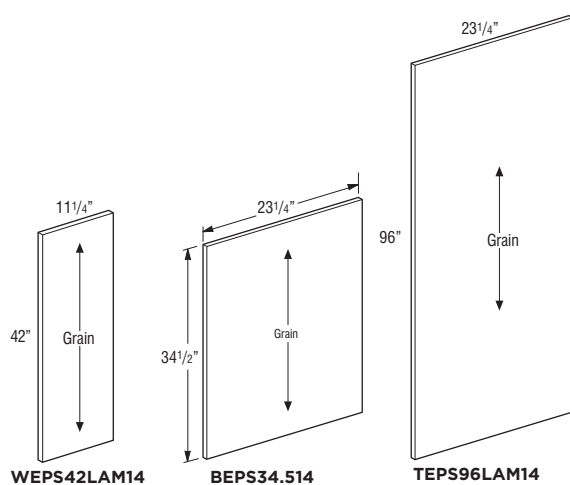
- 3/4" thick.
- Finished on front and all edges (backs are not finished).



END PANEL SKINS

Model	Cubic Feet	Stain	Paint
WEPS42LAM14	0.5	61	61
BEPS34.514	0.7	54	56
TEPS96LAM14	2.7	108	108

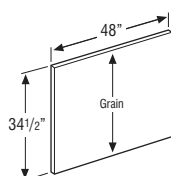
- 1/4" thick laminated furniture board.



FINISHED BACK SKINS

Model	Cubic Feet	Stain	Paint
BP4834.514	1.1	61	63

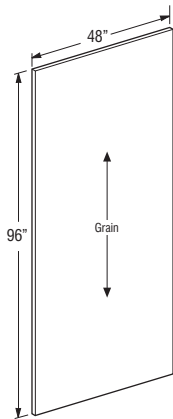
- 1/4" thick laminated furniture board.
- Grain runs with 34.5".



FINISHED BACK SKINS

Model	Cubic Feet	Stain	Paint
BP4896LAM14	2.7	139	139

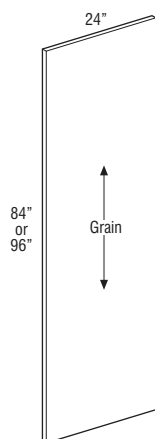
- 1/4" thick laminated furniture board.
- Grain runs with 96".



TALL END PANEL

Model	Cubic Feet	Stain	Paint
TEP2484LAM	1.3	153	153
TEP2496LAM	1.3	183	183

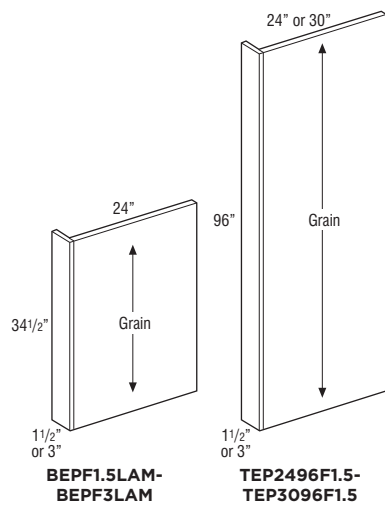
- 3/4" thick laminated furniture board.
- Panels are edgebanded on front edge.



BASE AND TALL PANELS WITH FILLER ATTACHED

Model	Cubic Feet	Stain	Paint
BEPF1.5LAM	1.7	82	82
BEPF3LAM	1.7	99	99
TEP2496F1.5	1.3	202	212
TEP3096F1.5	1.3	303	317

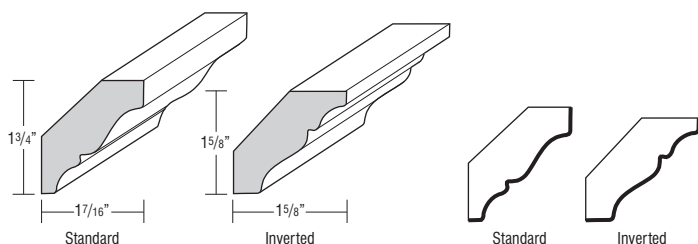
- 1/2" thick laminated furniture board.
- All panels have Natural Maple laminate interior.



CROWN MOULDING, SOLID WOOD CROWN

Model	Cubic Feet	Stain	Paint
SWCRM8	0.5	73	78

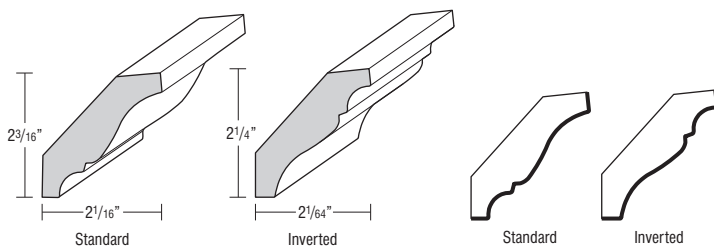
- Face mounts on Partial Overlay doors.
- May be face mounted on Full Overlay if used with a cleat.
- One 8' section.
- Moulding can be used as standard or inverted.
- Finished edges indicated by bold lines on side view drawings.



CROWN MOULDING, SOLID WOOD LARGE CROWN

Model	Cubic Feet	Stain	Paint
SWLCRM8	0.5	96	101

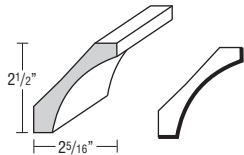
- Face mounts on Partial Overlay doors.
- May be face mounted on Full Overlay if used with a cleat.
- One 8' section.
- Moulding can be used as standard or inverted.
- Finished edges indicated by bold lines on side view drawings.



CROWN MOULDING, SMALL COVE CROWN

Model	Cubic Feet	Stain	Paint
SMCOVECROWN8	1.0	120	127

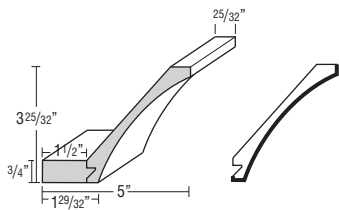
- One 8' section.
- Finished edges indicated by bold lines on side view drawings.



CROWN MOULDING, COVE CROWN

Model	Cubic Feet	Stain	Paint
COVECROWN8	1.0	150	157

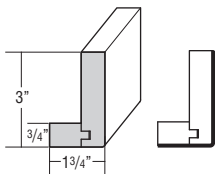
- One 8' section.
- Cleat shipped unattached can be used for top mount or face frame applications.
- Finished edges indicated by bold lines on side view drawings.



STARTER MOULDING, SHAKER

Model	Cubic Feet	Stain	Paint
STRS8	1.0	233	244

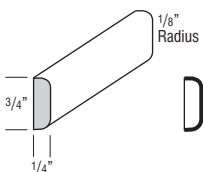
- One 8' section.
- Finished edges indicated by bold lines on side view drawings.



ACCENT MOULDING, FLAT SCRIBE

Model	Cubic Feet	Stain	Paint
SM8	0.5	28	31

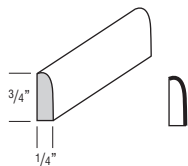
- One 8' section.
- Finished edges indicated by bold lines on side view drawings.



ACCENT MOULDING, SMALL SCRIBE

Model	Cubic Feet	Stain	Paint
SSM8	0.5	28	31

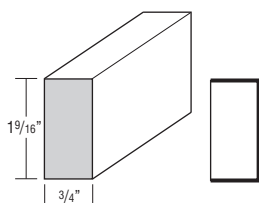
- One 8' section.
- Finished edges indicated by bold lines on side view drawings.



ACCENT MOULDING, LIGHT BAFFLE

Model	Cubic Feet	Stain	Paint
LB2	0.5	54	56

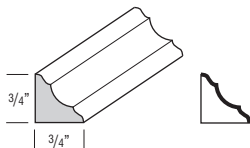
- One 8' section.
- Finished edges indicated by bold lines on side view drawings.



CORNER MOULDING, INSIDE CORNER

Model	Cubic Feet	Stain	Paint
ICM8	0.5	42	45

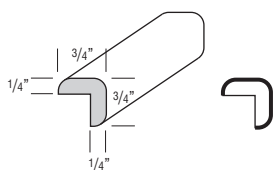
- One 8' section.
- Finished edges indicated by bold lines on side view drawings.



OUTSIDE CORNER

Model	Cubic Feet	Stain	Paint
OCM8	0.5	42	45

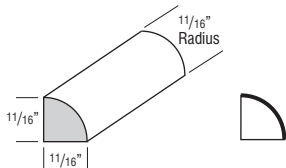
- One 8' section.



CORNER MOULDING, QUARTER ROUND

Model	Cubic Feet	Stain	Paint
QRM	0.5	45	47

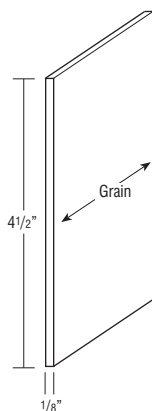
- One 8' section.
- Finished edges indicated by bold lines on side view drawings.



TOEBOARD

Model	Cubic Feet	Stain	Paint
TB8LAM18	0.1	26	26

- One 8' section.
- 1/8" laminated furniture board.



STRAIGHT VALANCE

Model	Cubic Feet	Stain	Paint
VV48	0.4	52	54
VV96	0.4	103	108

- Trimmable.
- Profiled bottom edge 3/4" thick.

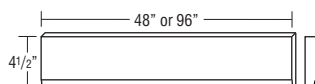


TABLE OF CONTENTS – ACCESSORIES AND HINGES

Roll Tray Kits69

Tilt-out Trays70

Bumper Pads70

Drawer Guide Kits71

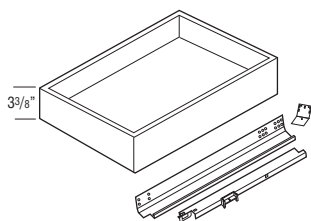
Mini Touch-up Kit71

Hinges72

ROLL TRAY KITS

Model	Cubic Feet	Price
RT15WD	0.5	56
RT18WD	0.8	59
RT21WD	0.9	59
RT24WD	1.0	61
RT27WD	1.4	63
RT30WD	1.4	68
RT33WD	1.6	75
RT36WD	1.6	78
RT42WD	1.8	118

- RT15WD-RT36WD kits contain 1 roll tray, roll tray brackets, hardware, and screws.
- RT42WD kits contain 2 roll trays, roll tray brackets, hardware, and screws.
- Exterior dimensions of roll trays are 21" deep x 3 3/8" tall (fits standard 24" deep cabinet).

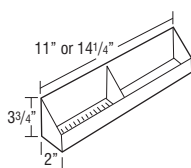


Width	Application
15"	B15, B15FH, B1532.5
18"	B18, B18FH, B1832.5, U18
21"	B21, B2132.5, B21FH
24"	B24, B24FH, B2432.5, U24
27"	B27, B2732.5
30"	B30, B30FHB, B3032.5
33"	B33, B3332.5
36"	B36, B36FH, B3632.5
42"	B42, B4232.5

TILT-OUT TRAYS

Model	Cubic Feet	Price
TOT15	0.1	59
TOT18	0.2	59

- TOT15: 11" w X 2" d X 3 3/4"
- TOT18: 14 1/4" w X 2" d X 3 3/4"
- Kit includes two white plastic trays and one pair of tilt-out hinges that attaches to the inside of the false panel.
- One tilt-out tray per false panel on cabinets less than 30" wide and greater than 36" wide, two tilt-out trays attached to one false panel on 30"-36" wide cabinets.



Cab Width	TOT Size	Cabinets
24"	TOT18	SB24, SB2432.5, VSB2432.521, VSB243421
27"	TOT18	SB27, SB2732.5
30"	TOT15	BSR30, BSR3032.5, SB30, SB3032.5, VSB3032.521, VSB303421
33"	TOT15	SB33, SB3332.5
36"	TOT18	BSR36, BSR3632.5, SB36, SB3632.5, VSB3632.521, VSB363421
42"	TOT18	SB42, SB4232.5
48"	TOT18	SB48CS, SB4832.5CS

BUMPER PADS

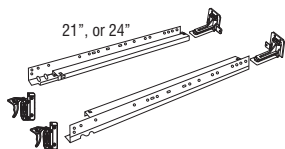
Model	Cubic Feet	Price
BUMPERPADS	0.5	7

- Package of 25.

DRAWER GUIDE KITS

Model	Cubic Feet	Price
DGK21PG	0.5	99
DGK24PG	0.5	103

- Undermount full extension, soft-close guide.
- Kit includes guide hardware for one drawer box (cabinets and drawer members, sockets and screws).
- Dimension refers to cabinet depth.



MINI TOUCH-UP KIT

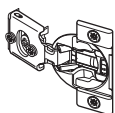
Model	Cubic Feet	Price
MTUK	0.1	28

- Includes small touch-up marker and a small fill stick.

PARTIAL OVERLAY HINGE

Model	Cubic Feet	Price
38NPOHINGE	0.5	16

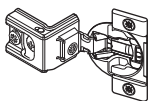
- Partial Overlay Hinge, 6-way adjustable with integrated soft-close.
- Sold in pairs.
- 1/2" partial overlay 107° hinge.
- For use on Partial Overlay Styles, Full Overlay Diagonal Wall Cabinets and Angled Corner Sink Fronts.



FULL OVERLAY HINGE

Model	Cubic Feet	Price
38CFOHINGE	0.5	16

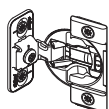
- Full Overlay 107° Hinge, 6-way adjustable with integrated soft-close.
- Sold in pairs.



FULL OVERLAY HINGE

Model	Cubic Feet	Price
38BFOVHINGE	0.5	16

- Full Overlay face mount 107° Hinge, 4-way adjustable with integrated soft-close.
- Sold in pairs.
- For use on OC3D cabinets.



HINGE ANGLE RESTRICTION CLIP

Model	Cubic Feet	Price
HINGERESCLIP	0.1	7

- For use in applications with cabinets installed at varying depths to prevent the door damage caused by opening into an adjacent cabinet.
- Restricts hinges to 86° opening capability.
- Works only with the 38NPOHINGE and 38CFOHINGE.
- Not recommended for cabinets with roll trays installed in partial overlay styles.
- Sold in pairs.



HINGE SHIM

Model	Cubic Feet	Price
HINGESHIM5	0.1	7

- Install between the face frame and hinge to allow additional adjustment of doors.
- Can be used to reduce gap between butt doors.
- Pack of 5 metal shims.
- Compatible with all hinges except face-mount.



Description	Code	Page	Description	Code	Page
2 Drawer Base	2DB	25	Full Overlay Hinge, 6-way	38BFOVHINGE	73
3 Drawer Base	3DB	26	Hinge Angle Restriction Clip	HINGERESCLIP	73
3" Filler	F3_ __, TF396	55	Hinge Shim	HINGESHIM5	74
6" Filler	F6_ __, TF696	56	Mini Touch-up Kit	MTUK	71
Accent Moulding, Flat Scribe	SM8	63	Partial Overlay Hinge	38NPOHINGE	72
Accent Moulding, Light Baffle	LB2	64	Roll Tray Kits	RT_ __ WD	69
Accent Moulding, Small Scribe	SSM8	64	Single Oven 3 Drawers	OC3D33_ __24	47
Angled Corner Sink Front	ACSF	30	Sink Base	SB	28
Base and Tall Panels with Filler Attached	BEPF1.5LAM, BEPF3LAM, TEP2496F1.5, TEP3096F1.5	60	Starter Moulding, Shaker	STRS8	63
Base Corner Single Door	BC_ __ S	32	Straight Valance	VV_ __	67
Base Double Door	B	24	Super Lazy Susan	SLS36R	33
Base Double Door - Full Height	B_ __ FH	25	Tall End Panels	TEP2484LAM, TEP2496LAM	59
Base Easy Reach	BER36R	33	Tilt-out Trays	TOT_ __	70
Base Lazy Susan	BLS36R	34	Toeboard	TB8LAM18	66
Base Single Door	B_ __ R	23	Universal Design, 3 Drawer Base	3DB_ __32.5	38
Base Single Door - Full Height	B_ __ FHR	24	Universal Design, Base Corner Single Door	BC_ __32.5S	41
Base Sink Removable	BSR	31	Universal Design, Base Single Door	B_ __32.5R	36
Base Wastebasket	BWB	27	Universal Design, Base Sink Removable	BSR_ __32.5	40
Bumper Pads	BUMPERPADS	70	Universal Design, Sink Base	SB_ __32.5	39
Corner Moulding, Inside Corner	ICM8	65	Universal Design, Super Lazy Susan	SLS3632.5R	42
Corner Moulding, Quarter Round	QRM	66	Utility Double Door	U24_ __24	45
Country Sink Base	CNTYSB	29	Utility Single Door	U18_ __24R	44
Crown Moulding, Cove Crown	COVECROWN8	62	Vanity Base Single Door	VB_ __32.521R	50
Crown Moulding, Small Cove Crown	SMCOVECROWN8	62	Vanity Base Single Door	VB_ __3421R	51
Crown Moulding, Solid Wood Crown	SWCRM8	61	Vanity Drawer Base	VDB_ __32.521	50
Crown Moulding, Solid Wood Large Crown	SWLCRM8	61	Vanity Drawer Base	VDB_ __3421	52
Diagonal Wall	DW_ __ _ _ _ _ R	20	Vanity Sink Base	VSB_ __32.521	51
Drawer Guide Kits	DGK_ __ PG	71	Vanity Sink Base	VSB_ __3421	52
End Panel Skins	WEPS42LAM14, BEPS34.514, TEPS96LAM14	57	Vanity Sink Drawer Base	2VSD_ __3421	53
Finished Back Skins	BP4834.514, BP4896LAM14	57	Wall Double Door	W	8
Full Overlay Hinge, 4-way	38CFOHINGE	72	Wall Corner Double Door	WC_ __ _ _ _ S	20
			Wall Corner Single Door	WC_ __ _ _ _ S	17
			Wall Single Door	W_ __ _ _ _ R	9

Code	Description	Page	Code	Description	Page
2DB	2 Drawer Base	25	MTUK	Mini Touch-up Kit	71
2VSD__3421	Vanity Sink Drawer Base	53	OC3D33__24	Single Oven 3 Drawers	47
38BFOVHINGE	Full Overlay Hinge, 6-way	73	QRM	Corner Moulding, Quarter Round	66
38CFOHINGE	Full Overlay Hinge, 4-way	72	RT__WD	Roll Tray Kits	69
38NPOHINGE	Partial Overlay Hinge	72	SB	Sink Base	28
3DB	3 Drawer Base	26	SB__32.5	Universal Design, Sink Base	39
3DB__32.5	Universal Design, 3 Drawer Base	38	SLS3632.5R	Universal Design, Super Lazy Susan	42
ACSF	Angled Corner Sink Front	30	SLS36R	Super Lazy Susan	33
B	Base Double Door	24	SM8	Accent Moulding, Flat Scribe	63
B__FH	Base Double Door - Full Height	25	SMCOVECROWN8	Crown Moulding, Small Cove Crown	62
B__FHR	Base Single Door - Full Height	24	SSM8	Accent Moulding, Small Scribe	64
B__R	Base Single Door	23	STRS8	Starter Moulding, Shaker	63
B__32.5R	Universal Design, Base Single Door	36	SWCRM8	Crown Moulding, Solid Wood Crown	61
BC__S	Base Corner Single Door	32	SWLCRM8	Crown Moulding, Solid Wood Large Crown	61
BC__32.5S	Universal Design, Base Corner Single Door	41	TB8LAM18	Toeboard	66
BEPF1.5LAM	Base Panel with Filler Attached	60	TF396	3" Filler, Tall	55
BEPF3LAM	Base Panel with Filler Attached	60	TF696	6" Filler, Tall	56
BEPS34.514	End Panel Skins	57	TEP2484LAM	Tall End Panel	59
BER36R	Base Easy Reach	33	TEP2496F1.5	Tall Panels with Filler Attached	60
BLS36R	Base Lazy Susan	34	TEP2496LAM	Tall End Panels	59
BP4834.514	Finished Back Skins	57	TEP3096F1.5	Tall Panels with Filler Attached	60
BP4896LAM14	Finished Back Skins	57	TEPS96LAM14	End Panel Skins	57
BSR	Base Sink Removable	31	TOT__	Tilt-out Trays	70
BSR__32.5	Universal Design, Base Sink Removable	40	U18__24R	Utility Single Door	44
BUMPERPADS	Bumper Pads	70	U24__24	Utility Double Door	45
BWB	Base Wastebasket	27	VB__32.521R	Vanity Base Single Door	50
CNTYSB	Country Sink Base	29	VB__3421R	Vanity Base Single Door	51
COVECROWN8	Crown Moulding, Cove Crown	62	VDB__32.521	Vanity Drawer Base	50
DGK__PG	Drawer Guide Kits	71	VDB__3421	Vanity Drawer Base	52
DW_____R	Diagonal Wall	20	VSB__32.521	Vanity Sink Base	51
F3__	3" Filler	55	VSB__3421	Vanity Sink Base	52
F6__	6" Filler	56	VV__	Straight Valance	67
HINGERESCLIP	Hinge Angle Restriction Clip	73	W	Wall Double Door	8
HINGESHIM5	Hinge Shim	74	W____R	Wall Single Door	9
ICM8	Corner Moulding, Inside Corner	65	WC____S	Wall Corner Double Door	20
LB2	Accent Moulding, Light Baffle	64	WC____S	Wall Corner Single Door	17
			WEPS42LAM14	End Panel Skins	57

MANTRA™



mantracabinets.com
mantracs@masterbrand.com
844-846-4572



Part of the
MasterBrand®
Family

Mantra cabinets have a five year limited warranty. For terms & conditions, please visit [mantracabinets.com/warranty](https://www.mantracabinets.com/warranty).

Cabinet Care and Cleaning Instructions: <https://www.masterbrand.com/care-and-cleaning>

Styles, product availability and construction may vary slightly from those shown due to material availability and/or design evolution. Specifications are subject to change without notice. Our customer service team is available if your design requires verification of product availability and specifications.