



"KITCHEN CABINETS WORTH OWNING"

2020 PRODUCT SPECIFICATIONS
HANDICAP & HANDICAP ACCESSIBLE CABINETS



“KITCHEN CABINETS WORTH OWNING”

Thank you for considering Kountry Wood Products for your cabinetry needs.

For over 20 years, Kountry Wood has been manufacturing stock kitchen and bathroom cabinetry in Nappanee, Indiana - The Heartland of America. We are a family-owned business that values the heritage of our country.

Our business was founded on the basic philosophy of building a quality product, selling it at a reasonable price and providing excellent customer service.

As you look through our brochure, you will see numerous styles of cabinetry to fit your individual needs from traditional to contemporary. We also offer many options to give your room a customized look.

We take our business seriously by providing American workers jobs in our community and by purchasing material from local suppliers. We are certified by the KCMA Environmental Stewardship Program, and reviewed annually to meet or exceed standards of air quality, product resource management and environmental stewardship to ensure a sustainable product for years to come.

We hope that you find our products to be the right choice for you.

Sincerely,

A handwritten signature in black ink, appearing to read "Ola Yoder", is written over a light gray, stylized outline of the signature.

Ola Yoder
CEO



Table of Contents

| | |
|--|----|
| About..... | 1 |
| Cabinet Care..... | 4 |
| Wood and Paint..... | 5 |
| Part Number - SKU Nomenclature | 5 |
| Cabinet Options..... | 6 |
| Finish Options..... | 7 |
| Product Matrix..... | 8 |
| Door Styles..... | 10 |
| Shelf Kits | 15 |
| Cabinet Dimensions | 16 |
| Base Cabinets..... | 26 |
| Blind Cabinets..... | 29 |
| Vanity Cabinets | 30 |
| Removable Sink Bases/Oven Cabinets | 34 |
| Utility Cabinets..... | 35 |
| Toe Kicks and Panels..... | 37 |
| Warranty | 39 |

Cabinet Care

Quality wood cabinet finishes that have been made to last, can, like good clothes, very quickly get a “used” appearance. Good things need looking after if they are to keep their quality. Due to its many properties, wood has always been a popular material for fine cabinetry the world over. Each tree is an individual piece of nature, which, after being felled, keeps its own character in its strength, structure and sensitivity to light and moisture. Wood can also change its character with time.

Moisture is the worst enemy of all wooden furniture, so all spilled liquids should be wiped away at once. Cabinets should be protected against heat, and also against wet or colored objects.

Cabinet surfaces should be cleaned with a very mild soapy solution. The cloth should be soft and dampened with the soap solution. The surface should then be wiped down with a dry cloth to remove excess moisture. Other cleaning compounds exist but may contain alkaline reagents which will adversely affect the surface. Household polishes can be used on an infrequent basis. Products containing silicone are moisture and dirt resistant but may hinder future lacquering.



KITCHEN CABINET MANUFACTURERS ASSOCIATION.
ENVIRONMENTAL STEWARDSHIP PROGRAM (ESP).
ALL PRODUCTS IMPACT THE ENVIRONMENT
FOR ESP PROGRAM CRITERIA, VISIT KCMA.ORG



KITCHEN CABINET
MANUFACTURERS ASSOCIATION™



Wood and Paint

Characteristics & Variations

Wood - Naturally occurring variations in wood such as color, grain, mineral streaks and knots are not considered defects.

Color variations are a natural occurrence due to species, age, character of cabinets, and exposure to UV light and sunlight. Such variations and changes are not considered defects. For these reasons, new and/or replacement cabinets may not match display samples and/or existing cabinets.

Warping is the bending or twisting of a part. To measure a door or shelf, lay the product on a flat surface and measure the gap from the surface to the part. The standard allowable tolerance for wood is $\frac{1}{8}$ " per lineal foot. Materials that fall within specification are considered acceptable, as a part of the natural characteristics of wood.

Paint Finishes - Paint finishes are uniquely different from standard wood finishes. On all wood products, expansion and contraction are typical due to changes in climate conditions. Due to this normal movement, paint finishes may develop slight separation lines, finish breaks and seam lines. These will be most notable at stile, rail and panel joints. Joint separations may become more noticeable over time and through season changes.

With the use of select hardwoods and veneers, some of the grain pattern and wood characteristics (checks & pin knots) as well as seams & joints will remain visible through the paint finish. These are normal and are not considered quality defects.

Seam lines and finish breaks are normal characteristics of paint finishes and should not be considered a reason for product replacement. Over time, there may be a slight color shift, due to exposure to natural and artificial light.

| Part Number - SKU Nomenclature | | | | | | | | |
|---|-------------------------|---------------|---------------|------------------|------------|-------------|---------------|-----------------|
| | ----- ITEM NUMBER ----- | | | | Door Style | Door Option | Color Species | Cabinet Options |
| | Cabinet Type | Cabinet Width | Cabinet Depth | Cabinet Height * | | | | |
| CHARACTERS | 1-3 | 4-5 | 6-7 | 8-9 | 10 | 11-12 | 13-14 | 15-20 |
| EXAMPLE | BAS | 30 | 24 | HH | C | 03 | CI | VM |
| BAS3024HHC03CIVM - Base 30" [BAS3024HH], Classic [C], Glass Door [03], Cinnamon Maple [CI], Premium & Plywood Veneer [V] (required by Matching Interior) + Matching Interior [M] = [VM] | | | | | | | | |

* Cabinet Height (chars 8-9): Tall (2 digits), Handicap (HH), or Handicap Accessible (HA)

| Door Style Codes | | | | |
|------------------|-----------------|------------------|----------------|-------------|
| C = Classic | G = Georgetown | H = Harmony | J = Jamestown | M = Mission |
| R = Rentown | V = Vanderburgh | W = Williamsburg | Y = Youngstown | |

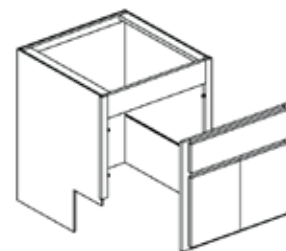
| Color Species Codes | | | |
|---------------------|---------------|--------------|----------------|
| CHERRY/STAINED | MAPLE/STAINED | | OAK/STAINED |
| CD = Cider | AB = Auburn | NX = Natural | DW = Driftwood |
| LX = Lava | AX = Autumn | ON = Onyx | FX = Fairfield |
| | CI = Cinnamon | ST = Slate | KX = Kountry |
| | CF = Coffee | VX = Vintage | |
| | | | HDF/PAINTED |
| | | | FL = Farmhouse |
| | | | WH = White |
| | | | LS = Limestone |
| | | | PE= Pearl |

Cabinet Options

NOTE: CABINET OPTION PRICES ARE ADDED TO THE LIST PRICE AND ARE CUMULATIVE

| OPTION | DESCRIPTION | |
|----------|--|--------------------------------|
| 02 | FULL HEIGHT DOOR: BASE CABINETS ONLY | |
| 04 | FULL OVERLAY: MISSION (optional) | |
| 03 | GLASS DOOR PREP | |
| 05 | MULLION DOOR (SEE DOOR CONSTRUCTION SPECIFICATIONS FOR IMAGES) | SINGLE DOOR CABINET (<= 24" W) |
| | | 2 OR 4 DOOR CABINET (>=27" W) |
| 100 | 3/4" MDF SHELF | |
| 102 | 3/4" PLYWOOD SHELF: [Hanadicap Accessible Bases & Vanities ONLY] | |
| VM | MATCHING INTERIOR (M): [STAIN FINISHES ONLY] - REQUIRES PREMIUM AND PLYWOOD VENEER [V] | |
| DI | MATCHING PAPER INTERIOR (I): [Farmhouse Blue, Limestone, Pearl ONLY] - REQUIRES PREMIUM (D) | |
| BRF, VRF | REMOVABLE FRONT CABINET: (SEE IMAGE AT RIGHT) • AVAILABLE ONLY ON SINK BASES AND VANITY SINK BASES • REPLACE "BSB" or "VSB" PREFIXES WITH "BRF" or "VRF" • NOTE: SIZES UNDER 33" WIDE MAY NOT ALLOW WHEELCHAIR ACCESS | |

Removable Cabinet Front



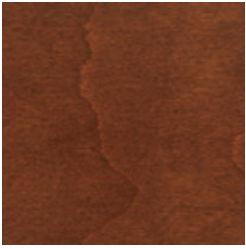
| SOFT CLOSE PACKAGE | |
|--------------------|--|
| OPTION | DESCRIPTION |
| 28 | SOFT CLOSE HINGES * REQUIRES SOFT CLOSE WOOD DRAWERS (WHEN APPLICABLE) * • DOORS WITH 2 HINGES RECEIVE 1 SOFT CLOSE HINGE. (EXCEPTION: DOORS LARGER THAN 17" X 21" RECEIVE 2 SOFT CLOSE HINGES) • DOORS WITH 3 HINGES RECEIVE 2 SOFT CLOSE HINGES. |
| S | SOFT CLOSE WOOD DRAWERS (FULL EXTENSION)* REQUIRES SOFT CLOSE HINGES * • NOT AVAILABLE IN 18" DEEP VANITIES |

| OPTION | DESCRIPTION |
|--------|---|
| W | ALL WOOD DRAWER BOX: INCLUDED ON CABINETS 27" - 36" W |
| 06 | 5 PIECE DRAWER OPTION: NOT AVAILABLE ON MISSION |

| PREFIX | DESCRIPTION |
|--------|--|
| ROS | ROLL OUT SHELF FOR BASE CABINET *75LBS WEIGHT CAPACITY* FACTORY INSTALLATION OPTION • 1 Level: Tray(s) installed at the bottom of the cabinet. • 2 Levels: 1st level of tray(s) installed at the bottom of the cabinet. 2nd level of tray(s) spaced evenly above. |
| ROSU | ROLL OUT SHELF FOR UTILITY CABINET *75LBS WEIGHT CAPACITY* FACTORY INSTALLATION OPTION (For each level of shelving, 1 tray is installed per door opening.) • 2 Levels: 1st level of tray(s) installed at the bottom of the cabinet. 2nd level of tray(s) spaced evenly above (21" space). • 4 Levels: 1st level of tray(s) installed at the bottom of the cabinet. 2nd - 4th level of tray(s) spaced evenly above. (10" space). |

| OPTION | DESCRIPTION |
|--------|---|
| P | PLYWOOD VENEER SIDES: Not available on painted cabinets |
| V | PLYWOOD VENEER SIDES: Use with Premium Option - Not available on painted cabinets |

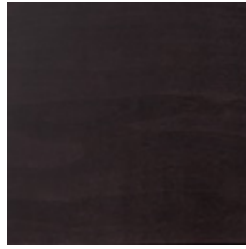
Maple.....



Auburn



Autumn



Onyx



Coffee



Vintage



Natural



Cinnamon



Slate

Painted.....



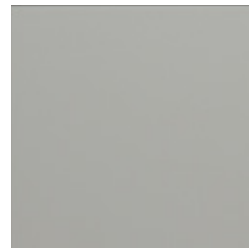
Farmhouse Blue



Pearl



White



Limestone

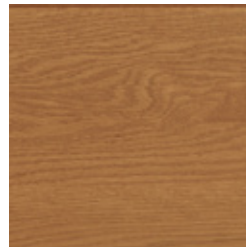
Oak.....



Driftwood

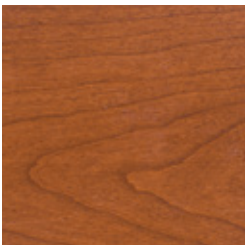


Fairfield

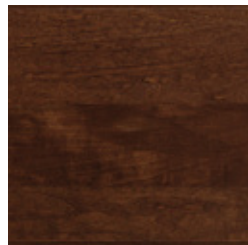


Kountry

Cherry.....



Cider



Lava

Note: Colors may not accurately be represented due to variations in the printing process. Please request a sample from your dealer.

| Product Matrix | | | | | |
|--|---|---|---|---|---|
| Price Column ► | A | | B | | |
| Door Style ► | Harmony | Mission Full Overlay Available | Georgetown | Youngstown | Vanderburgh |
| Finish & Species ▼ |  |  |  |  |  |
| | FLAT PANEL | SLAB | SHAKER | SHAKER FLAT PANEL | MITERED FLAT PANEL |
| Auburn Maple | ✓ | ✓ | ✓ | | ✓ |
| Autumn Maple | ✓ | ✓ | ✓ | | ✓ |
| Cinnamon Maple | ✓ | ✓ | ✓ | | ✓ |
| Coffee Maple | ✓ | ✓ | ✓ | | ✓ |
| Natural Maple | ✓ | ✓ | ✓ | | ✓ |
| Onyx Maple | ✓ | ✓ | ✓ | | ✓ |
| Slate Maple | ✓ | ✓ | ✓ | ✓ | ✓ |
| Vintage Maple | ✓ | ✓ | ✓ | | ✓ |
| Cider Cherry | | | ✓ | | ✓ |
| Lava Cherry | | | ✓ | | ✓ |
| Fairfield Oak | ✓ | | | | |
| Kountry Oak | ✓ | | | | |
| Driftwood Oak | ✓ | | | | |
| Painted Limestone*† (Elegant Maple Interior) | | | ✓ HDF | | ✓ Maple |
| Painted Farmhouse Blue*† (Elegant Maple Interior) | | | ✓ HDF | | ✓ Maple |
| Painted Pearl*† (Elegant Maple Interior) | | | ✓ HDF | | ✓ Maple |
| Painted White*† (White Interior) | | | ✓ HDF | ✓ HDF | ✓ Maple |

✓ Door Style and Finish shown in picture

* Additional charges apply

NOTE: Plywood Veneer Sides N/A in White, Farmhouse Blue, Limestone, or Pearl

† Composite Board on Painted except as noted

| Product Matrix | | | | | |
|--|---|---|--|---|--|
| Price Column ► | C | | | D | |
| Door Style ► | Classic | Jamestown Full Overlay Only | Rentown Full Overlay Only | Williamsburg Full Overlay Only | |
| Finish & Species ▼ |  |  |  |  | |
| | RAISED PANEL | WIDE RAIL SHAKER | WIDE RAIL FLAT PANEL | MITERED RAISED PANEL | |
| Auburn Maple | ✓ | ✓ | ✓ | ✓ | |
| Autumn Maple | ✓ | ✓ | ✓ | ✓ | |
| Cinnamon Maple | ✓ | ✓ | ✓ | ✓ | |
| Coffee Maple | ✓ | ✓ | ✓ | ✓ | |
| Natural Maple | ✓ | ✓ | ✓ | ✓ | |
| Onyx Maple | ✓ | ✓ | ✓ | ✓ | |
| Slate Maple | ✓ | ✓ | ✓ | ✓ | |
| Vintage Maple | ✓ | ✓ | ✓ | ⊗ | |
| Cider Cherry | ✓ | ✓ | | ✓ | |
| Lava Cherry | ✓ | ✓ | | ✓ | |
| Fairfield Oak | ✓ | ✓ | | | |
| Kountry Oak | ⊗ | ✓ | | | |
| Driftwood Oak | ✓ | ⊗ | | | |
| Painted Limestone*† (Elegant Maple Interior) | | ✓ | ✓ | | |
| Painted Farmhouse Blue*† (Elegant Maple Interior) | | ✓ | ⊗ | | |
| Painted Pearl*† (Elegant Maple Interior) | | ✓ | ✓ | | |
| Painted White*† (White Interior) | | ✓ | ✓ | | |



Door Style and Finish shown in picture

* Additional charges apply

NOTE: Plywood Veneer Sides N/A in White, Farmhouse Blue, Limestone, or Pearl

† Composite Board on Painted except as noted

Harmony

Flat Panel

Construction:

$\frac{3}{4}$ " x $2\frac{1}{4}$ " solid wood rails with mortise and tenon corner joints.

Available in standard overlay only

Center panel:

$\frac{1}{4}$ " veneer

Rubber balls stabilize panel and allow for wood expansion and contraction

Doors are beveled on the back for easy grip opening

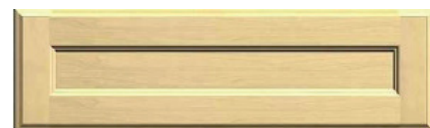


Door Profile



Standard Drawer Front

*Edge detail on drawer front matches profile.



Optional 5-piece Drawer Front

Mission

Slab

Construction:

$\frac{5}{8}$ " particle board with maple veneer

Available in standard and full overlay

Edges:

Banded with a maple veneer

Optional 5-piece Drawer Front not available



Standard Drawer Front

Georgetown

Shaker

Construction:

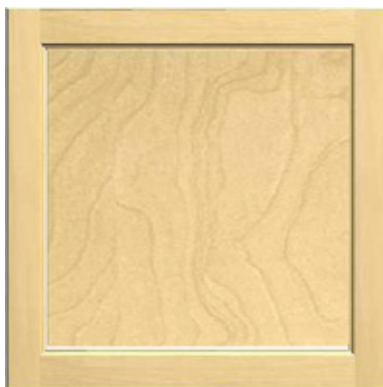
$\frac{3}{4}$ " x $2\frac{1}{4}$ " solid wood rails with mortise and tenon corner joints.
Painted finishes: composite board

Available in standard overlay only

Center panel:

$\frac{1}{4}$ " veneer

Rubber balls stabilize panel and allow for wood expansion and contraction



Door Profile



Standard Drawer Front
*Edge detail on drawer front matches profile.



Optional 5-piece Drawer Front

Williamsburg

Mitered Raised Panel

Construction:

$\frac{3}{4}$ " x $2\frac{1}{4}$ " solid wood rails with mortise and tenon corner joints

Available in full overlay only

Center panel:

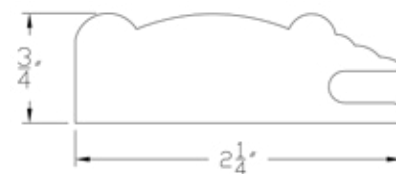
$\frac{5}{8}$ " veneer

Rubber balls stabilize panel and allow for wood expansion and contraction

5-piece Drawer Front:

Raised Panel: $8\frac{3}{8}$ " width and above

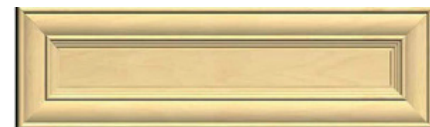
Flat Panel: any size narrower in width than $8\frac{3}{8}$ "



Door Profile



Standard Drawer Front



Optional 5-piece Drawer Front

Vanderburgh

Mitered Flat Panel

Construction:

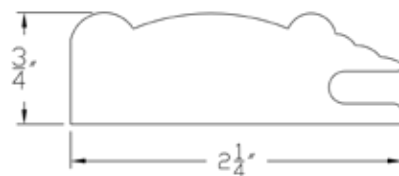
$\frac{3}{4}$ " x $2\frac{1}{4}$ " solid wood rails with mortise and tenon corner joints

Available in standard overlay only

Center panel:

$\frac{1}{4}$ " veneer

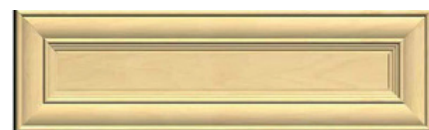
Rubber balls stabilize panel and allow for wood expansion and contraction



Door Profile



Standard Drawer Front



Optional 5-piece Drawer Front

Classic

Raised Panel

Construction:

$\frac{3}{4}$ " x $2\frac{1}{4}$ " solid wood rails with mortise and tenon corner joints

Available in standard overlay only

Center panel:

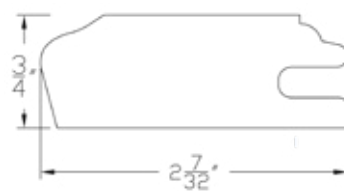
$\frac{5}{8}$ " solid oak, solid cherry or maple veneer on fiberboard
Rubber balls stabilize panel and allow for wood expansion and contraction

5-piece Drawer Front:

Raised Panel: $8\frac{3}{8}$ " width and above

Flat Panel: Any width less than $8\frac{3}{8}$ "

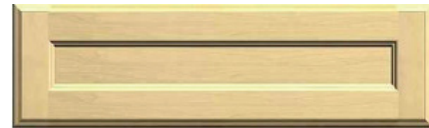
Doors are beveled on the back for easy grip opening



Door Profile



Standard Drawer Front
*Edge detail on drawer front matches profile.



Optional 5-piece Drawer Front

Jamestown

Shaker With Wide Rail

Construction:

$\frac{3}{4}$ " x 3" solid wood rails with mortise and tenon corner joints.
Painted finishes: composite board

Available in full overlay only.

Center panel:

$\frac{1}{4}$ " veneer

Rubber balls stabilize panel and allow for wood expansion and contraction.



Door Profile



Standard Drawer Front
*Edge detail on drawer front matches profile.



Optional 5-piece Drawer Front
($2\frac{1}{4}$ " horizontal rails; 3" vertical rails)

Rentown

Wide Rail Flat Panel

Construction:

$\frac{3}{4}$ " x 3" solid wood rails with mortise and tenon corner joints
Painted finishes: composite board

Available in full overlay only

Center panel:

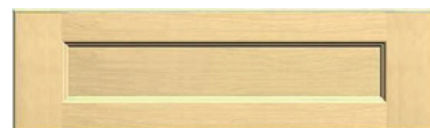
$\frac{1}{4}$ " veneer. Rubber balls stabilize panel and allow for wood expansion & contraction



Door Profile



Standard Drawer Front



Optional 5-piece Drawer Front
($1\frac{3}{4}$ " horizontal rail, 3" vertical rail)

Doors are beveled on the back for easy grip opening

Youngstown

Flat Panel

Construction:

$\frac{3}{4}$ " x $2\frac{1}{4}$ " solid wood rails with mortise and tenon corner joints.
Painted finish: composite board

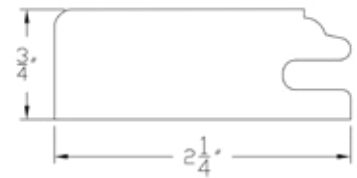
Available in standard overlay only

Center panel:

$\frac{1}{4}$ " veneer
Rubber balls stabilize panel and allow for wood expansion and contraction

Only available in Slate and White

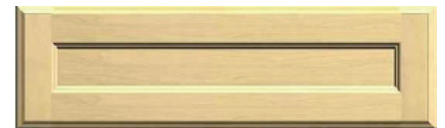
Doors are beveled on the back for easy grip opening



Door Profile



Standard Drawer Front



Optional 5-piece Drawer Front

Mullion

Available on wall cabinets and top doors of UHC and UHB only



Available In:

- Classic
- Georgetown
- Harmony
- Jamestown
- Rentown
- Youngstown



Available In:

- Vanderburgh
- Williamsburg

Shelf Kits

Premium Plywood



Standard Elegant or White



MDF



MDF

- Available in two shelf or four shelf kits
- ½" (A4) or ¾" (A6) thickness
- Elegant color standard: white available to match cabinet interior
- Shelves are rated to withstand 15 lbs per square foot

MODEL NUMBER

2SK2724

2SK3024

2SK3324

ITEM NUMBER

2SK2724A4

2SK3024A4

2SK3324A4

MODEL NUMBER

4SK1812

4SK1818

4SK1821

4SK1824

4SK2112

4SK2118

4SK2121

ITEM NUMBER

4SK1812A4

4SK1818A4

4SK1821A4

4SK1824A4

4SK2112A4

4SK2118A4

4SK2121A4

MODEL NUMBER

4SK2124

4SK2412

4SK2418

4SK2421

4SK2424

4SK3024

ITEM NUMBER

4SK2124A4

4SK2412A4

4SK2418A4

4SK2421A4

4SK2424A4

4SK3024A4

MODEL NUMBER

4SK1812.75

4SK1818.75

4SK1821.75

4SK1824.75

4SK2112.75

4SK2118.75

4SK2121.75

ITEM NUMBER

4SK1812A6

4SK1818A6

4SK1821A6

4SK1824A6

4SK2112A6

4SK2118A6

4SK2121A6

MODEL NUMBER

4SK2124.75

4SK2412.75

4SK2418.75

4SK2421.75

4SK2424.75

4SK3024.75

ITEM NUMBER

4SK2124A6

4SK2412A6

4SK2418A6

4SK2421A6

4SK2424A6

4SK3024A6

Premium

- Available in two shelf or four shelf kits
- ½" (A4-D) or ¾" (A6-D) thickness
- Elegant color standard: white available to match cabinet interior
- Shelves are rated to withstand 15 lbs per square foot

MODEL NUMBER

2SK2724.5D

2SK3024.5D

2SK3324.5D

2SK2724.75D

2SK3024.75D

2SK3324.75D

ITEM NUMBER

2SK2724A4-D

2SK3024A4-D

2SK3324A4-D

2SK2724A6-D

2SK3024A6-D

2SK3324A6-D

MODEL NUMBER

4SK1812.5D

4SK1818.5D

4SK1821.5D

4SK1824.5D

4SK2112.5D

4SK2118.5D

4SK2121.5D

ITEM NUMBER

4SK1812A4-D

4SK1818A4-D

4SK1821A4-D

4SK1824A4-D

4SK2112A4-D

4SK2118A4-D

4SK2121A4-D

MODEL NUMBER

4SK2124.5D

4SK2412.5D

4SK2418.5D

4SK2421.5D

4SK2424.5D

4SK3024.5D

ITEM NUMBER

4SK2124A4-D

4SK2412A4-D

4SK2418A4-D

4SK2421A4-D

4SK2424A4-D

4SK3024A4-D

MODEL NUMBER

4SK1812.75D

4SK1818.75D

4SK1821.75D

4SK1824.75D

4SK2112.75D

4SK2118.75D

4SK2121.75D

ITEM NUMBER

4SK1812A6-D

4SK1818A6-D

4SK1821A6-D

4SK1824A6-D

4SK2112A6-D

4SK2118A6-D

4SK2121A6-D

MODEL NUMBER

4SK2124.75D

4SK2412.75D

4SK2418.75D

4SK2421.75D

4SK2424.75D

4SK3024.75D

ITEM NUMBER

4SK2124A6-D

4SK2412A6-D

4SK2418A6-D

4SK2421A6-D

4SK2424A6-D

4SK3024A6-D

White 2 and 4-Shelf Kits

Add **"-MWT"** to the end of the Item Number.

For Model Number, use **"2SKW"** / **"4SKW"** respectively at the beginning.

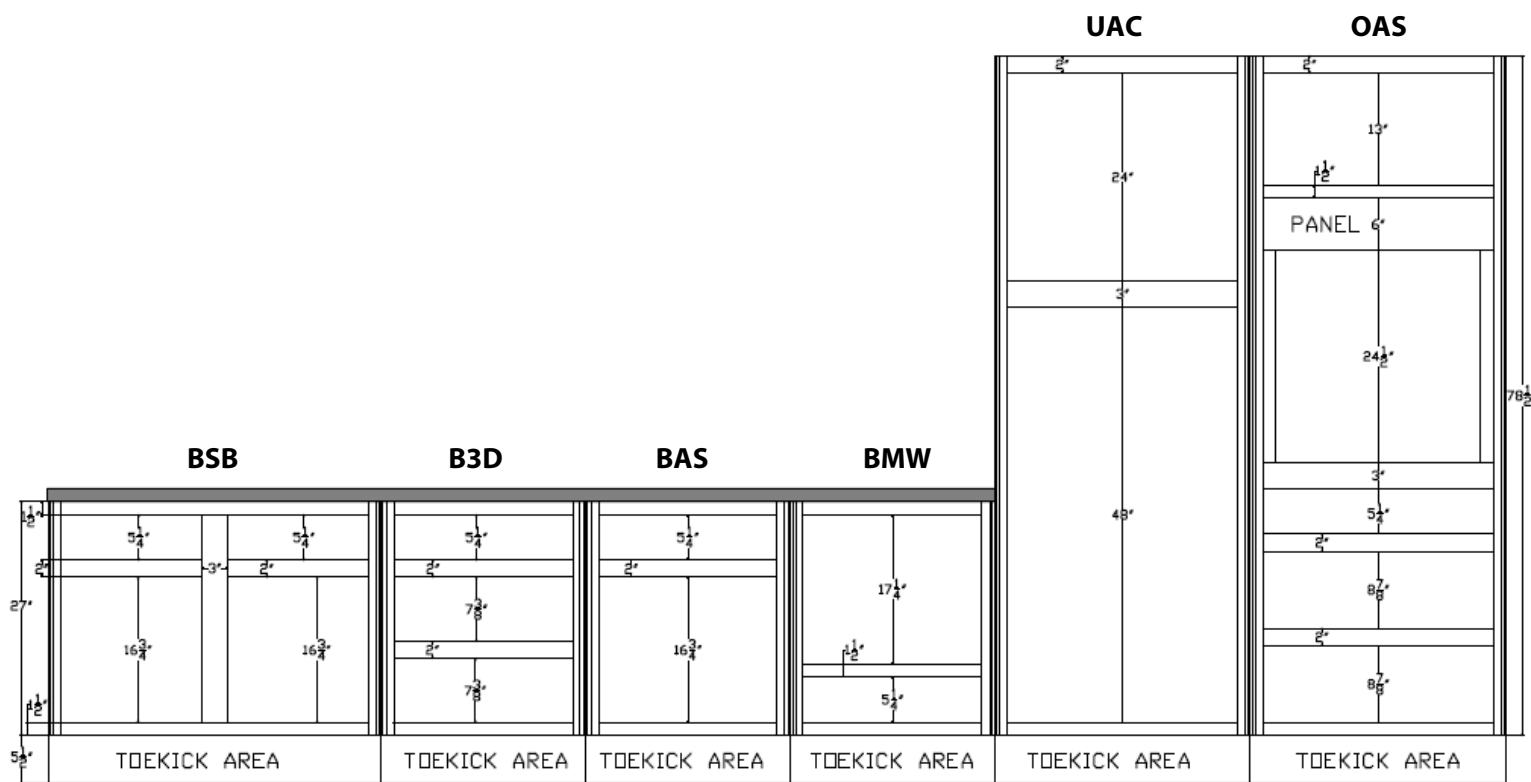
Touch-Up Kit

- Contains: top coat, scotch bright pad, fill stick, and felt/stain marker



Cabinet Dimensions

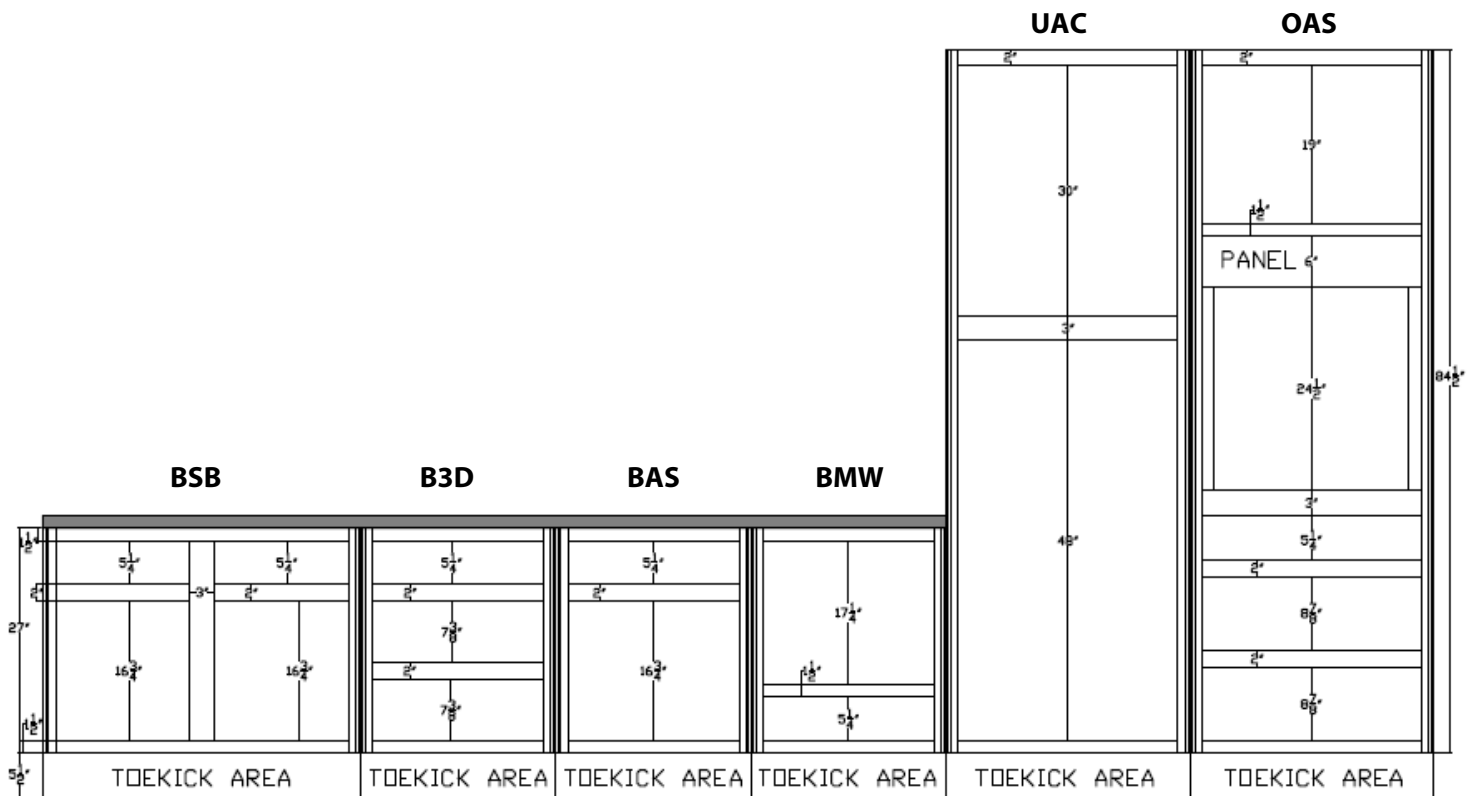
84" High Handicap Accessible Applications



| Cabinet Details | |
|--|--|
| <ul style="list-style-type: none"> All handicap accessible base cabinets are 32 1/2" high 2" top and bottom rails - utility cabinets 1 1/2" top and bottom rails - base cabinets 3" vertical rails on base cabinets to divide double door cabinets on 39" wide and over Drawer box opening heights are 5 1/4" for small and 7 3/8" or 8 7/8" for large (deep) drawers | |
| Standard Door Style | Full Overlay Door Style |
| <ul style="list-style-type: none"> 1" reveal on sides of doors (1" of face frame shows) Frame opening 2" - Double doors for base cabinets | <ul style="list-style-type: none"> 1/4" reveal on sides of doors (1/4" of face frame shows) Frame opening 1/2" - Double doors for base cabinet |

Cabinet Dimensions

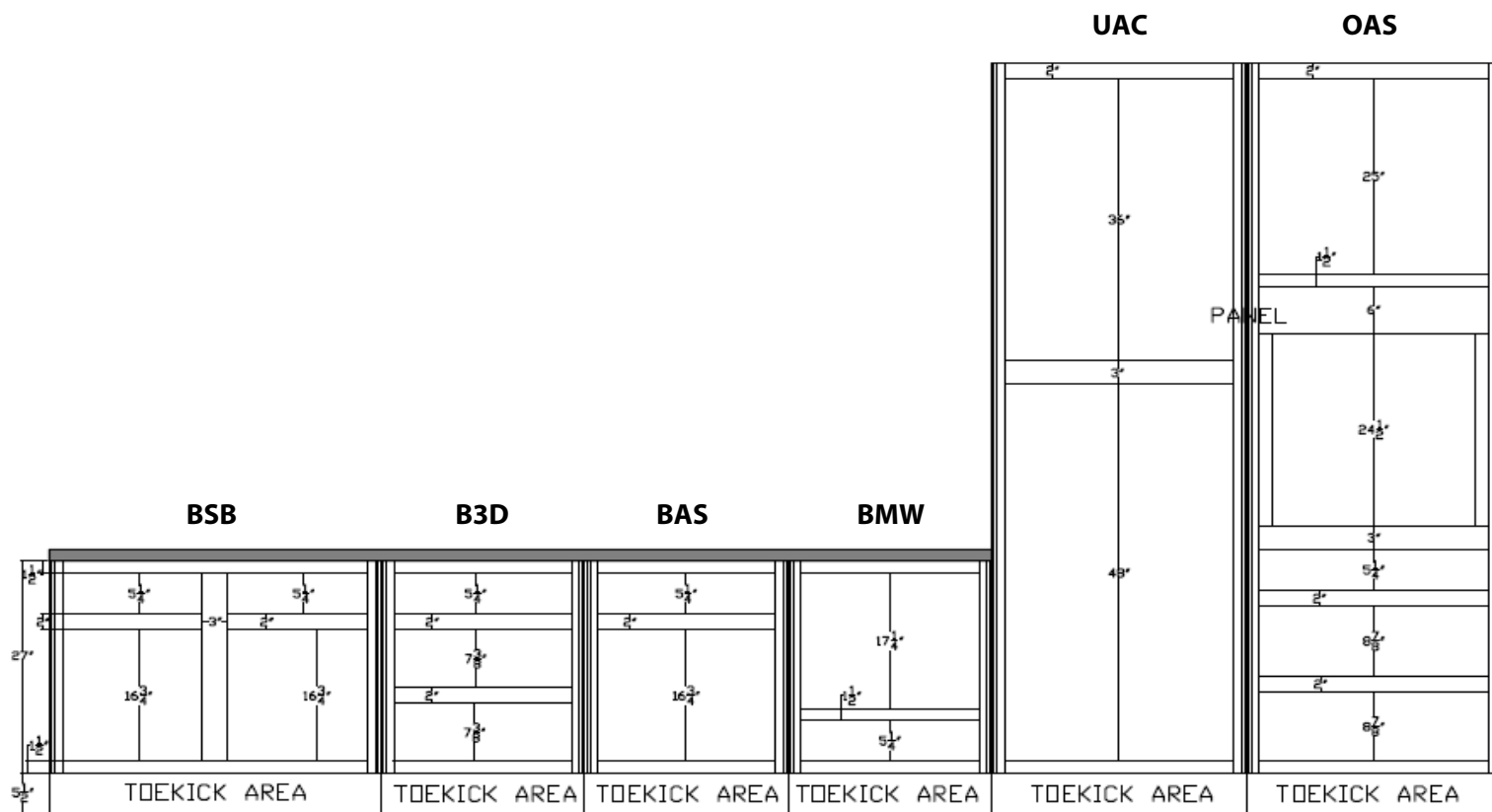
90" High Handicap Accessible Applications



| Cabinet Details | |
|---|--|
| <ul style="list-style-type: none"> All handicap accessible base cabinets are 32½" high 2" top and bottom rails - utility cabinets 1½" top and bottom rails - base cabinets 3" vertical rails on base cabinets to divide double door cabinets on 39" wide and over Drawer box opening heights are 5¼" for small and 7⅜" or 8⅞" for large (deep) drawers | |
| Standard Door Style | Full Overlay Door Style |
| <ul style="list-style-type: none"> 1" reveal on sides of doors (1" of face frame shows) Frame opening 2" - Double doors for base cabinets | <ul style="list-style-type: none"> ¼" reveal on sides of doors (¼" of face frame shows) Frame opening ½" - Double doors for base cabinet |

Cabinet Dimensions

96" High Handicap Accessible Applications

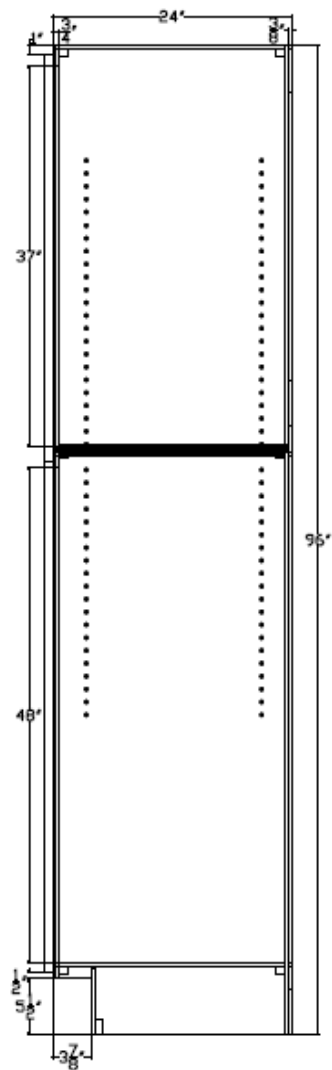


| Cabinet Details | |
|--|--|
| <ul style="list-style-type: none"> All handicap accessible base cabinets are 32 1/2" high 2" top and bottom rails - utility cabinets 1 1/2" top and bottom rails - base cabinets 3" vertical rails on base cabinets to divide double door cabinets on 39" wide and over Drawer box opening heights are 5 1/4" for small and 7 3/8" or 8 7/8" for large (deep) drawers | |
| Standard Door Style | Full Overlay Door Style |
| <ul style="list-style-type: none"> 1" reveal on sides of doors (1" of face frame shows) Frame opening 2" - Double doors for base cabinets | <ul style="list-style-type: none"> 1/4" reveal on sides of doors (1/4" of face frame shows) Frame opening 1/2" - Double doors for base cabinet |

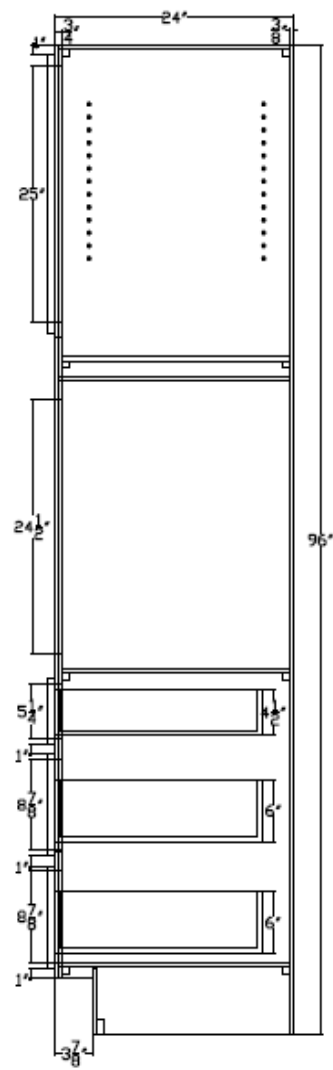
Cabinet Dimensions

Tall Handicap Accessible Cabinets

Utility Cabinet



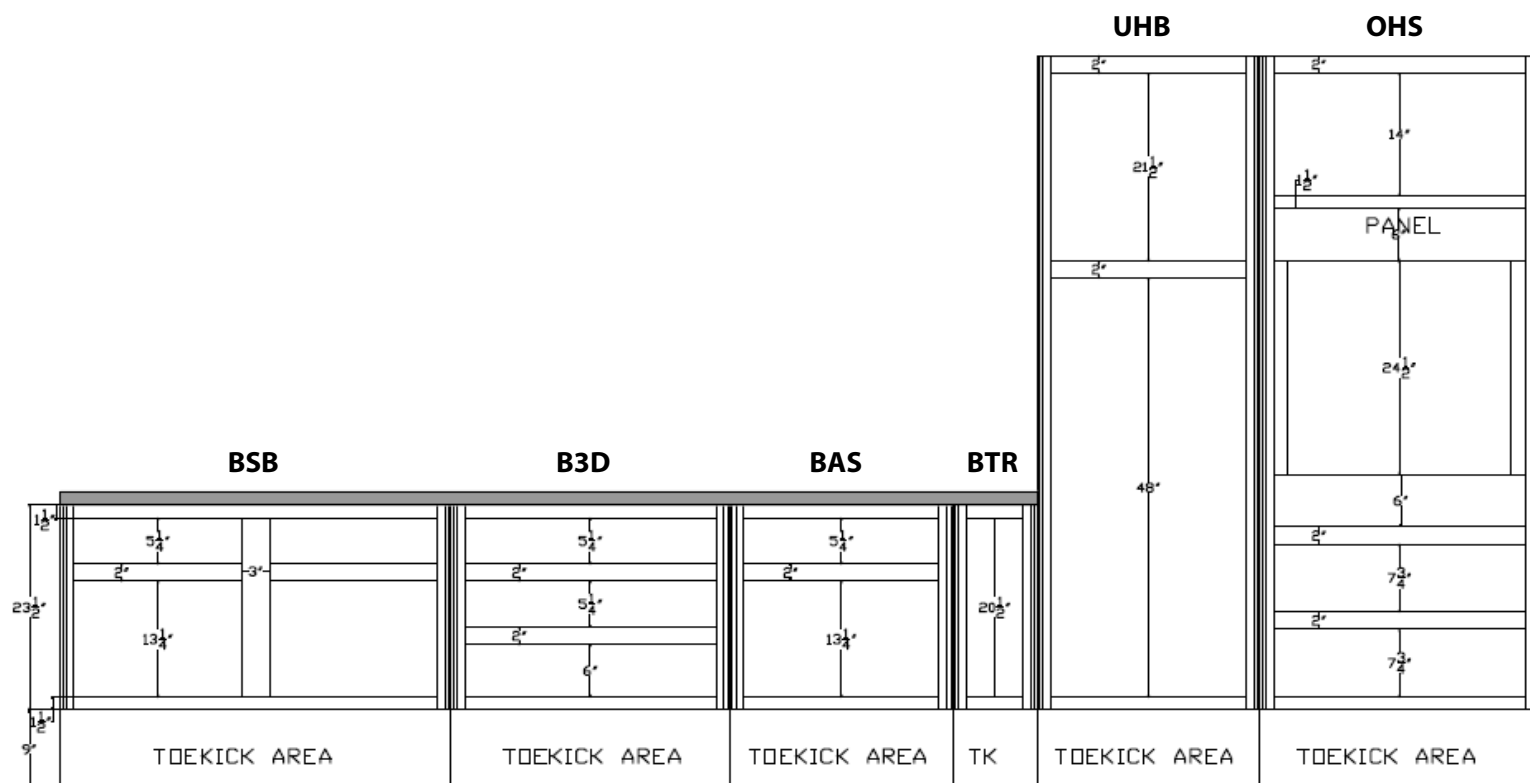
Single Oven Cabinet



| Cabinet Depth | Interior Drawer Box Depth | |
|---------------|---------------------------|--------------|
| 24" | 20 3/4" | |
| 21" | 16 1/2" MDF | 18" All Wood |
| 18" | 16 1/2" | |

Cabinet Dimensions

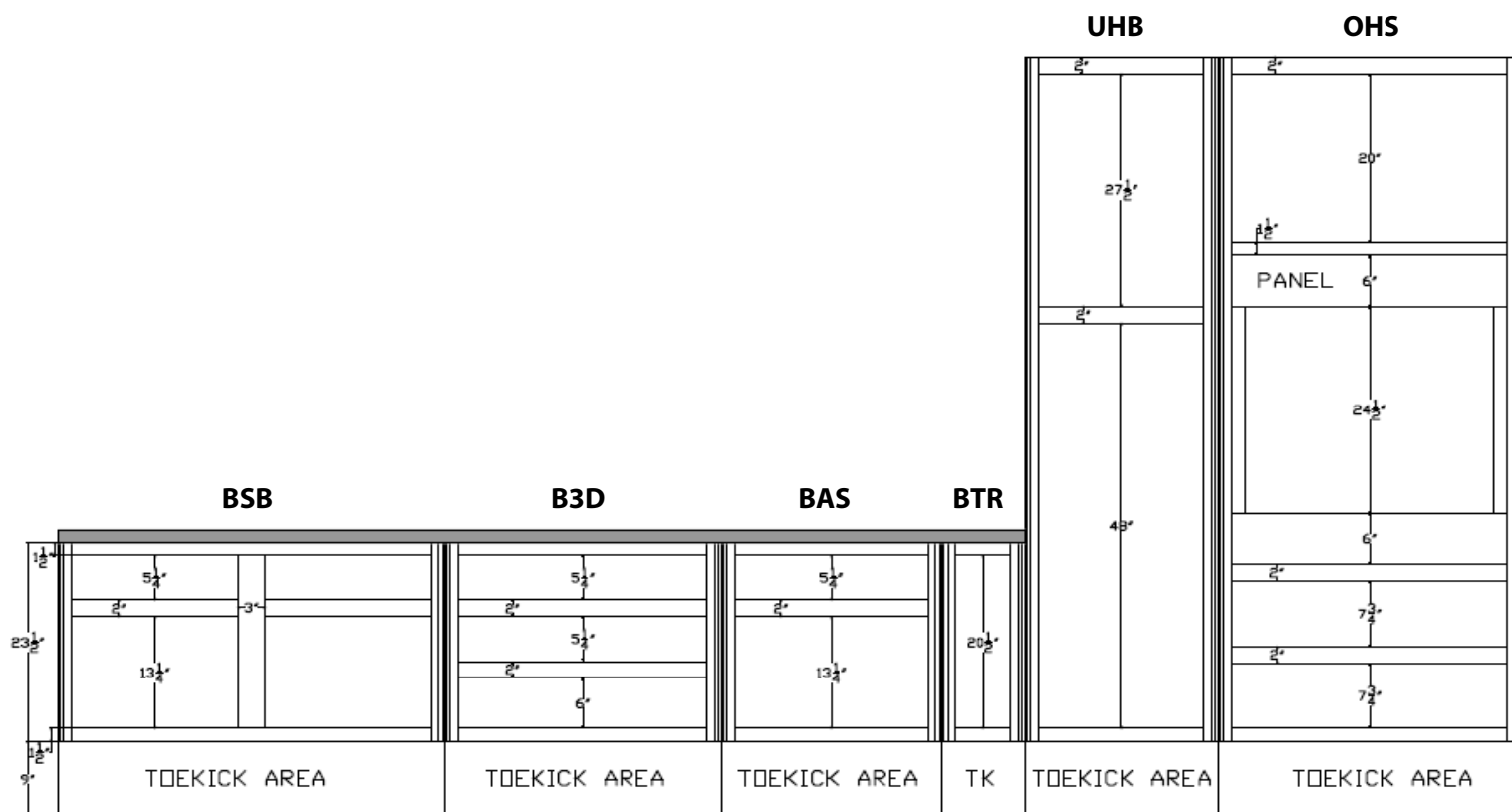
84" High Handicap Applications



| Cabinet Details | |
|--|--|
| <ul style="list-style-type: none"> All handicap accessible base cabinets are 32 1/2" high 2" top and bottom rails - utility cabinets 1 1/2" top and bottom rails - base cabinets 3" vertical rails on base cabinets to divide double door cabinets on 39" wide and over Drawer box opening heights are 5 1/4" for small and 6" or 7 3/4" for large (deep) drawers | |
| Standard Door Style | Full Overlay Door Style |
| <ul style="list-style-type: none"> 1" reveal on sides of doors (1" of face frame shows) Frame opening 2" - Double doors for base cabinets | <ul style="list-style-type: none"> 1/4" reveal on sides of doors (1/4" of face frame shows) Frame opening 1/2" - Double doors for base cabinet |

Cabinet Dimensions

90" High Handicap Applications



Cabinet Details

- All handicap accessible base cabinets are 32 1/2" high
- 2" top and bottom rails - utility cabinets
- 1 1/2" top and bottom rails - base cabinets
- 3" vertical rails on base cabinets to divide double door cabinets on 39" wide and over
- Drawer box opening heights are 5 1/4" for small and 6" or 7 3/4" for large (deep) drawers

Standard Door Style

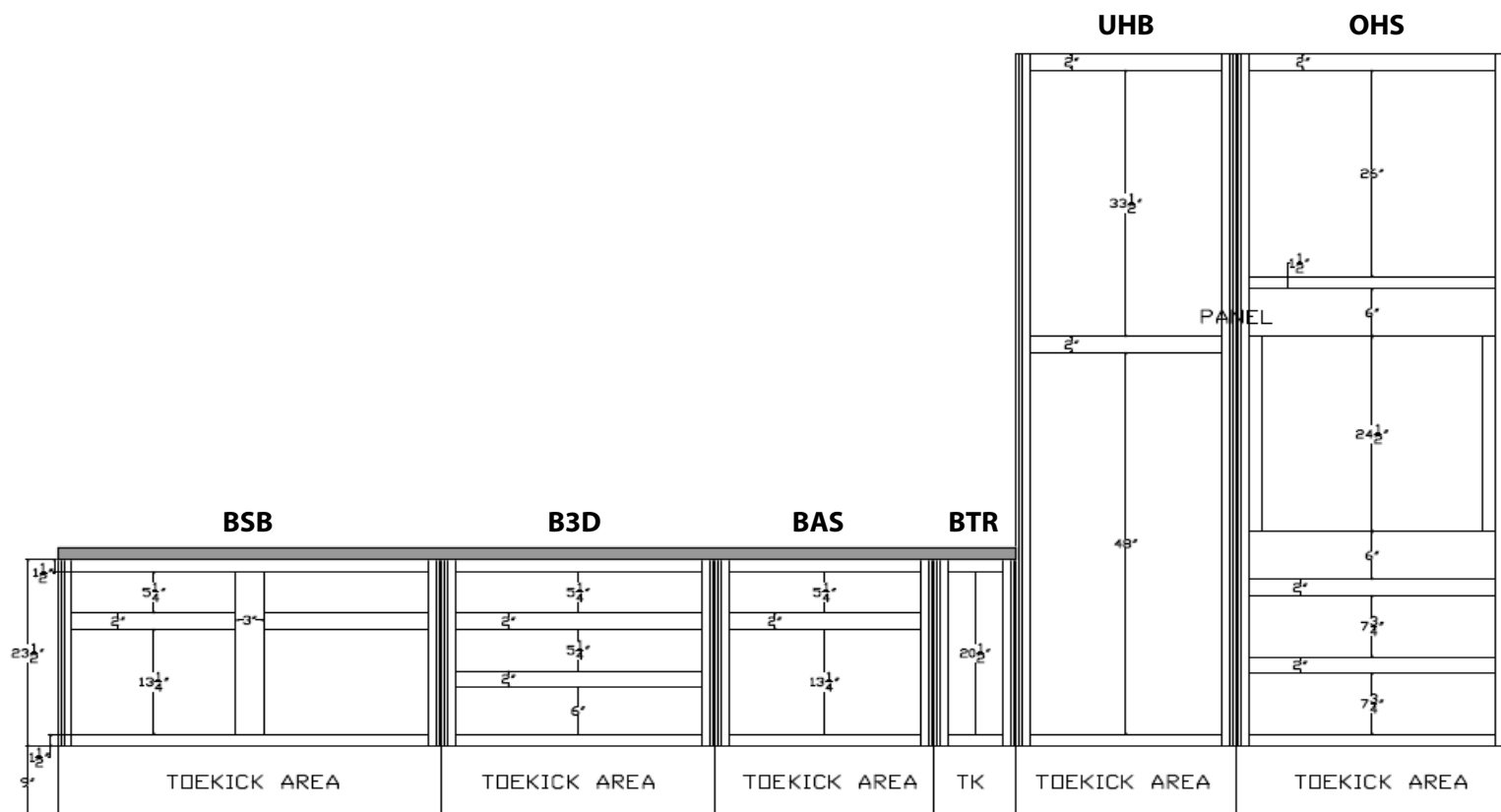
- 1" reveal on sides of doors (1" of face frame shows)
- Frame opening 2" - Double doors for base cabinets

Full Overlay Door Style

- 1/4" reveal on sides of doors (1/4" of face frame shows)
- Frame opening 1/2" - Double doors for base cabinet

Cabinet Dimensions

96" High Handicap Applications



Cabinet Details

- All handicap accessible base cabinets are 32 1/2" high
- 2" top and bottom rails - utility cabinets
- 1 1/2" top and bottom rails - base cabinets
- 3" vertical rails on base cabinets to divide double door cabinets on 39" wide and over
- Drawer box opening heights are 5 1/4" for small and 6" or 7 3/4" for large (deep) drawers

Standard Door Style

- 1" reveal on sides of doors (1" of face frame shows)
- Frame opening 2" - Double doors for base cabinets

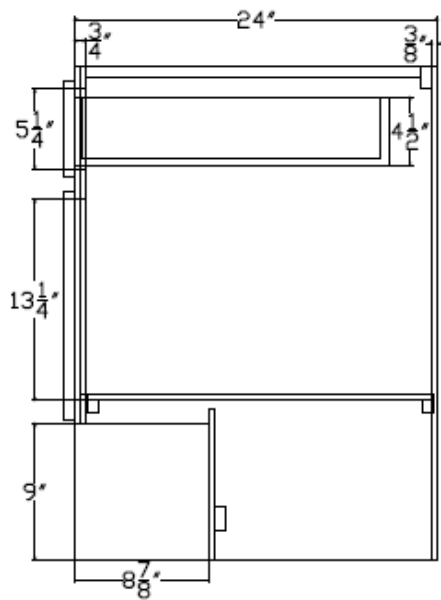
Full Overlay Door Style

- 1/4" reveal on sides of doors (1/4" of face frame shows)
- Frame opening 1/2" - Double doors for base cabinet

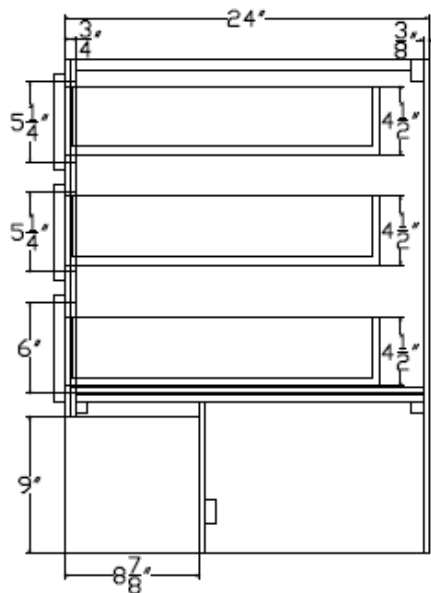
Cabinet Dimensions

Base Handicap Cabinets

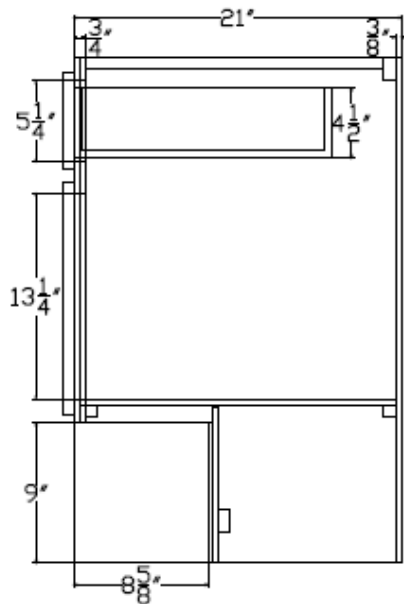
Base Handicap Cabinet



3 Drawer Handicap Base



32 1/2" High Handicap Vanity

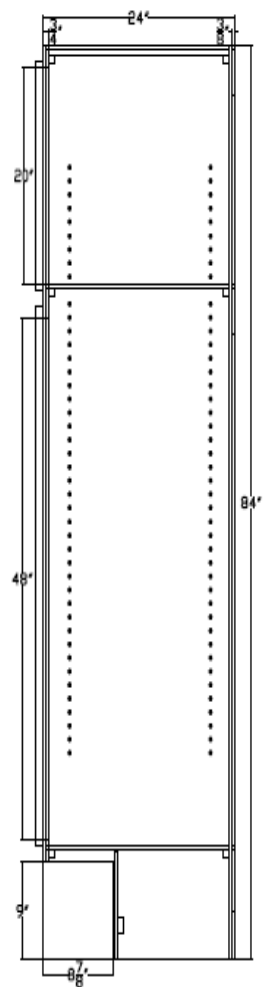


| Cabinet Depth | Interior Drawer Box Depth | |
|---------------|---------------------------|--------------|
| 24" | 20 3/4" | |
| 21" | 16 1/2" MDF | 18" All Wood |
| 18" | 16 1/2" | |

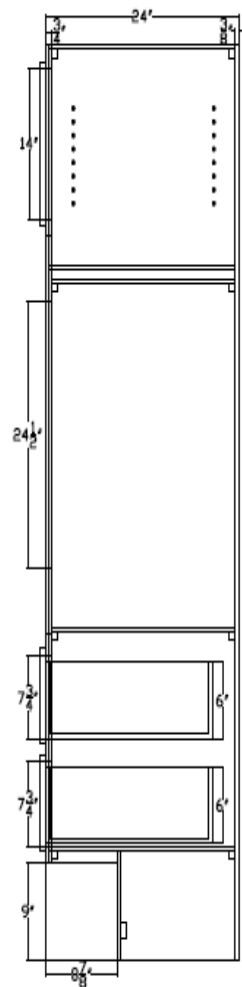
Cabinet Dimensions

Tall Handicap Cabinets

Utility Cabinet



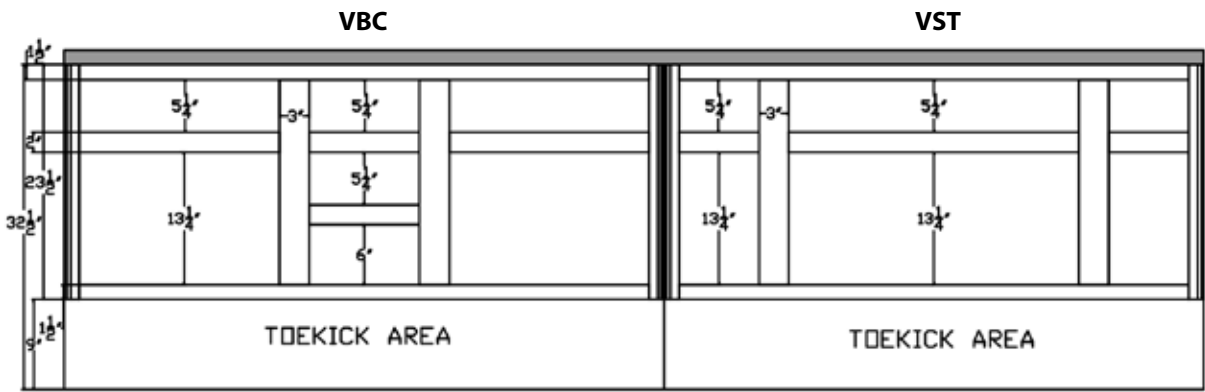
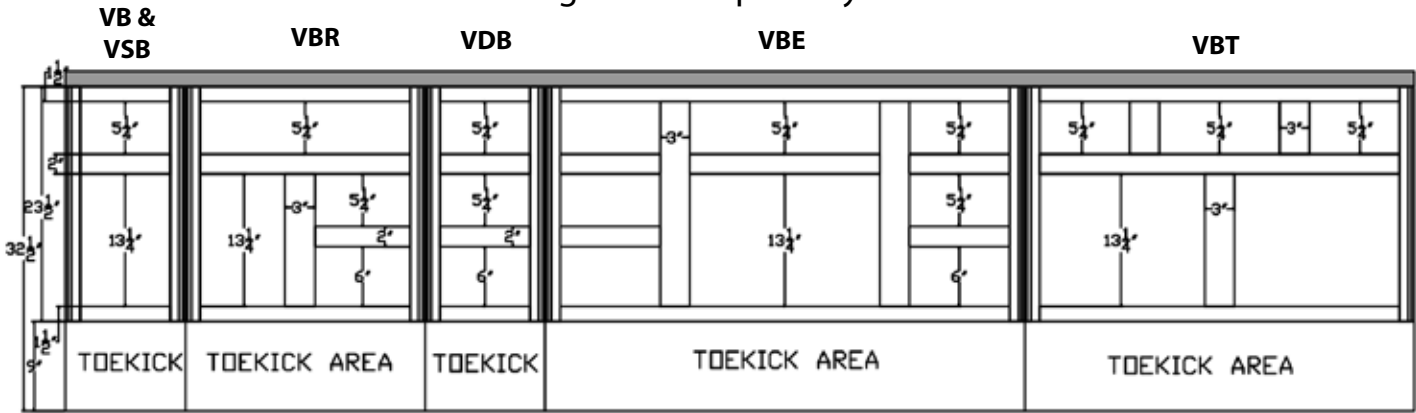
Single Oven Cabinet



| Cabinet Depth | Interior Drawer Box Depth | |
|---------------|---------------------------|--------------|
| 24" | 20 3/4" | |
| 21" | 16 1/2" MDF | 18" All Wood |
| 18" | 16 1/2" | |

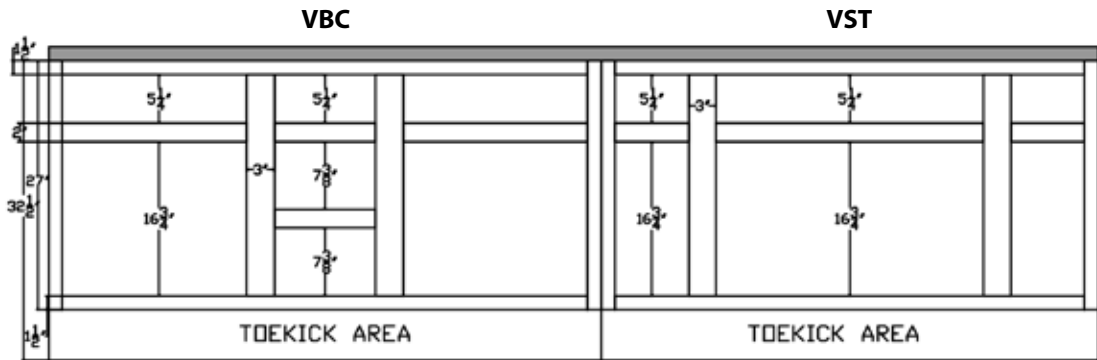
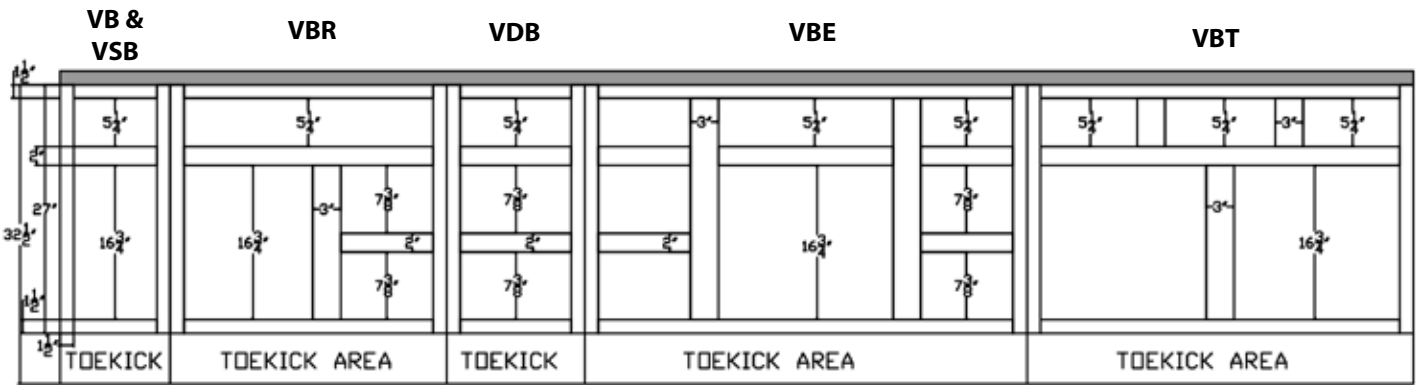
Cabinet Dimensions

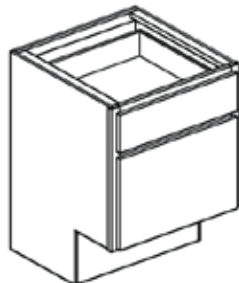
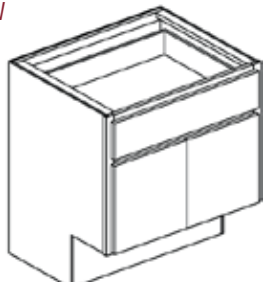
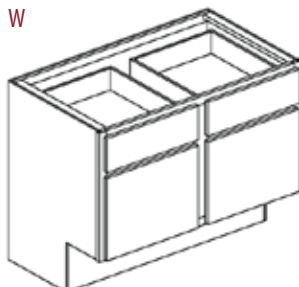
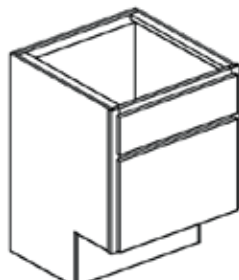
32½" High Handicap Vanity Cabinets



Cabinet Dimensions

32½" High Handicap Accessible Vanity Cabinets



| Base Cabinets | | | | | | | | | | | | | | | | |
|--|---|--|---|---|--------------|-------------|-------|-----------|------|-----------|------|-----------|------|-----------|------|-----------|
| Handicap Base Cabinets 12" - 24" Wide | | | | | | | | | | | | | | | | |
| 12 - 24 W 24 D 32½ H |  | <ul style="list-style-type: none">• One door• Butt doors option available on 24" W ONLY• One drawer• Drawer weight capacity: 75 lbs.• Dovetail drawers standard• Two hinges per door• One fixed shelf (Handicap Accessible ONLY) | <ul style="list-style-type: none">• Premium all wood package upgrade available• Soft close hinge and drawer upgrade available, see page 6• Peninsula option not available | <table><tr><th>MODEL NUMBER</th><th>ITEM NUMBER</th></tr><tr><td>HB12</td><td>BAS1224HH</td></tr><tr><td>HB15</td><td>BAS1524HH</td></tr><tr><td>HB18</td><td>BAS1824HH</td></tr><tr><td>HB21</td><td>BAS2124HH</td></tr><tr><td>HB24</td><td>BAS2424HH</td></tr></table> | MODEL NUMBER | ITEM NUMBER | HB12 | BAS1224HH | HB15 | BAS1524HH | HB18 | BAS1824HH | HB21 | BAS2124HH | HB24 | BAS2424HH |
| MODEL NUMBER | ITEM NUMBER | | | | | | | | | | | | | | | |
| HB12 | BAS1224HH | | | | | | | | | | | | | | | |
| HB15 | BAS1524HH | | | | | | | | | | | | | | | |
| HB18 | BAS1824HH | | | | | | | | | | | | | | | |
| HB21 | BAS2124HH | | | | | | | | | | | | | | | |
| HB24 | BAS2424HH | | | | | | | | | | | | | | | |
| Handicap Base Cabinets 27" - 36" Wide | | | | | | | | | | | | | | | | |
| 27 - 36 W 24 D 32½ H |  | <ul style="list-style-type: none">• Butt doors• One drawer• Drawer weight capacity: 75 lbs• Dovetail drawers standard• Two hinges per door• One fixed shelf (Handicap Accessible ONLY) | <ul style="list-style-type: none">• Premium all wood package upgrade available• Soft close hinge and drawer upgrade available, see page 6• Peninsula option not available | <table><tr><th>MODEL NUMBER</th><th>ITEM NUMBER</th></tr><tr><td>HB27</td><td>BAS2724HH</td></tr><tr><td>HB30</td><td>BAS3024HH</td></tr><tr><td>HB33</td><td>BAS3324HH</td></tr><tr><td>HB36</td><td>BAS3624HH</td></tr></table> | MODEL NUMBER | ITEM NUMBER | HB27 | BAS2724HH | HB30 | BAS3024HH | HB33 | BAS3324HH | HB36 | BAS3624HH | | |
| MODEL NUMBER | ITEM NUMBER | | | | | | | | | | | | | | | |
| HB27 | BAS2724HH | | | | | | | | | | | | | | | |
| HB30 | BAS3024HH | | | | | | | | | | | | | | | |
| HB33 | BAS3324HH | | | | | | | | | | | | | | | |
| HB36 | BAS3624HH | | | | | | | | | | | | | | | |
| Handicap Base Cabinets 39" - 48" Wide | | | | | | | | | | | | | | | | |
| 39 - 48 W 24 D 32½ H |  | <ul style="list-style-type: none">• Two doors• Two drawers• Drawer weight capacity: 75 lbs• Dovetail drawers standard• Two hinges per door• Premium all wood package upgrade available | <ul style="list-style-type: none">• Soft close hinge and drawer upgrade available, see page 6• Peninsula option not available | <table><tr><th>MODEL NUMBER</th><th>ITEM NUMBER</th></tr><tr><td>HB39</td><td>BAS3924HH</td></tr><tr><td>HB42</td><td>BAS4224HH</td></tr><tr><td>HB45</td><td>BAS4524HH</td></tr><tr><td>HB48</td><td>BAS4824HH</td></tr></table> | MODEL NUMBER | ITEM NUMBER | HB39 | BAS3924HH | HB42 | BAS4224HH | HB45 | BAS4524HH | HB48 | BAS4824HH | | |
| MODEL NUMBER | ITEM NUMBER | | | | | | | | | | | | | | | |
| HB39 | BAS3924HH | | | | | | | | | | | | | | | |
| HB42 | BAS4224HH | | | | | | | | | | | | | | | |
| HB45 | BAS4524HH | | | | | | | | | | | | | | | |
| HB48 | BAS4824HH | | | | | | | | | | | | | | | |
| Handicap Range and Sink Bases 24" Wide | | | | | | | | | | | | | | | | |
| 24 W 24 D 32½ H |  | <ul style="list-style-type: none">• One door• Butt doors option available on 24" W ONLY• No drawer• Two hinges per door• No shelves | <ul style="list-style-type: none">• Premium all wood package upgrade available• Soft close hinge upgrade available, see page 6• Peninsula option not available | <table><tr><th>MODEL NUMBER</th><th>ITEM NUMBER</th></tr><tr><td>HSB24</td><td>BSB2424HH</td></tr></table> | MODEL NUMBER | ITEM NUMBER | HSB24 | BSB2424HH | | | | | | | | |
| MODEL NUMBER | ITEM NUMBER | | | | | | | | | | | | | | | |
| HSB24 | BSB2424HH | | | | | | | | | | | | | | | |

Notes:

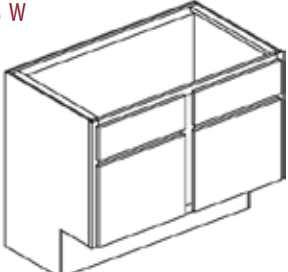
- All shelves and bottoms are rated to withstand 15 lbs. per square foot.
- For additional cabinet options, please see page 6.

Handicap Accessible:

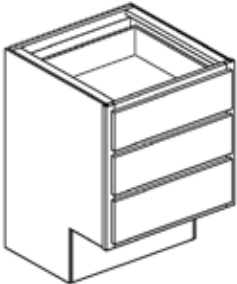
- Item Number - end with HA instead of HH
- Model Number - begin with HA instead of H

Base Cabinets

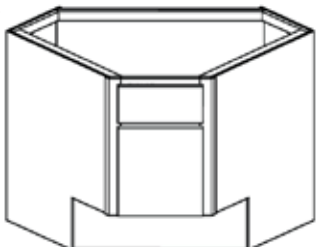
Handicap Range and Sink Bases 39" - 48" Wide

| | | | |
|---|--|---|--|
| <p>39 - 48 W 24 D 32½ H</p>  | <ul style="list-style-type: none"> • Two doors • No drawer • Two hinges per door • No shelves • Premium all wood package upgrade available • Soft close hinge and drawer upgrade available, see page 6 • Peninsula option not available | <p>MODEL NUMBER</p> <p>HSB39 HSB42 HSB45 HSB48</p> | <p>ITEM NUMBER</p> <p>BSB3924HH BSB4224HH BSB4524HH BSB4824HH</p> |
|---|--|---|--|

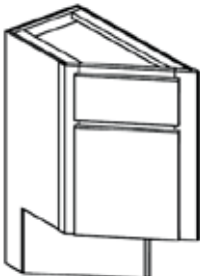
Handicap 3-Drawer Bank Cabinets

| | | | |
|---|---|--|--|
| <p>12 - 36 W 24 D 32½ H</p>  | <ul style="list-style-type: none"> • Three drawers • Drawer weight capacity: 75 lbs • Dovetail drawers standard • Premium all wood package upgrade available • Soft close, full extension drawer upgrade available, see page 6 | <p>MODEL NUMBER</p> <p>H3DB12 H3DB15 H3DB18 H3DB21 H3DB24 H3DB27 H3DB30 H3DB33 H3DB36</p> | <p>ITEM NUMBER</p> <p>B3D1224HH B3D1524HH B3D1824HH B3D2124HH B3D2424HH B3D2724HH B3D3024HH B3D3324HH B3D3624HH</p> |
|---|---|--|--|

Handicap Diagonal Sink Bases

| | | | |
|--|---|---|--|
| <p>BDI - Face Frame and Floor</p> <p>BDC - Complete (shown)</p> <p>36x36 or 42x42</p> <p>32½ H</p>  | <ul style="list-style-type: none"> • One door • No drawers • Two hinges p/door • No shelves • Premium all wood package upgrade available • Soft close hinge upgrade available, see page 6 | <p>MODEL NUMBER</p> <p>HDSBC36X36 HDSBC42X42 HDSB36X36 HDSB42X42</p> | <p>ITEM NUMBER</p> <p>BDC3636HH BDC4242HH BDI3636HH BDI4242HH</p> |
|--|---|---|--|

Handicap Base Angle Cabinets

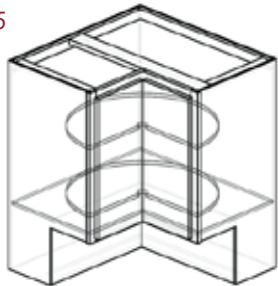
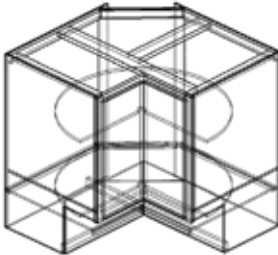
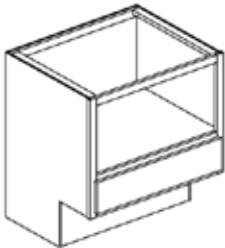
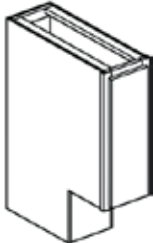
| | | | |
|--|---|---|--|
| <p>Height: 32½</p> <p>Short Side: 12</p> <p>Long Side: 24</p> <p>Back: 12</p> <p>Front Face: 17½</p> <p>Left angle shown</p> <p>Cabinet Angle Degree: 135°</p>  | <ul style="list-style-type: none"> • One door • No drawer • Two hinges per door • One fixed shelf (Handicap Accessible ONLY) • BAR - Right angle cabinet • BAL - Left angle cabinet • Premium all wood package upgrade available • Soft close hinge upgrade available, see page 6 | <p>MODEL NUMBER</p> <p>HBAC12L</p> | <p>ITEM NUMBER</p> <p>BAL1224HH</p> |
|--|---|---|--|

Notes:

- All shelves and bottoms are rated to withstand 15 lbs. per square foot.
- For additional cabinet options, please see page 6.

Handicap Accessible:

- Item Number - end with HA instead of HH
- Model Number - begin with HA instead of H

| Base Cabinets | | | | |
|--|---|---|---|--|
| Handicap Base Corner Cabinets | | | | |
| BLZ - Lazy Susan w/ 165 Degree Hinge Ends: 18 |  | <ul style="list-style-type: none"> • Available in 33 x 33 • Easy Reach door • Two trays • Tray weight capacity: 75 lbs • Two hinges per door • Premium all wood package upgrade available • Heavy duty lazy susan wooden tray upgrade available | MODEL NUMBER HBLS3333 HBLS3636 | ITEM NUMBER BLZ3333HH BLZ3636HH |
| Handicap Base Super Susan | | | | |
| BDL - Super Susan Ends: 23¼ |  | <ul style="list-style-type: none"> • Easy Reach door • Two hinges per door • Two trays • Tray dimensions: 32" diameter • Tray weight capacity: 75 lbs • Premium all wood package upgrade available • Heavy duty lazy susan wooden tray upgrade available | MODEL NUMBER HSS36 | ITEM NUMBER BDL3636HH |
| Handicap Microwave Base | | | | |
| Microwave Opening: HH: 27 W x 13¾ H HA: 27 W x 17¼ W |  | <ul style="list-style-type: none"> • One drawer • Drawer weight capacity: 75 lbs • Dovetail drawers standard • Premium all wood package upgrade available. • Soft close, full extension drawer upgrade available, see page 6 | MODEL NUMBER HBMW30 | ITEM NUMBER BMW3024HH |
| Handicap Tray Cabinet | | | | |
| 9 W 24 D 32½ H |  | <ul style="list-style-type: none"> • One door • No drawers • Two hinges per door • No shelves • Premium all wood package upgrade available. • Soft close hinge upgrade available, see page 6 • Peninsula option not available | MODEL NUMBER HBT9 | ITEM NUMBER BTR0924HH |

Notes:

- All shelves and bottoms are rated to withstand 15 lbs. per square foot.
- For additional cabinet options, please see page 6.

Handicap Accessible:

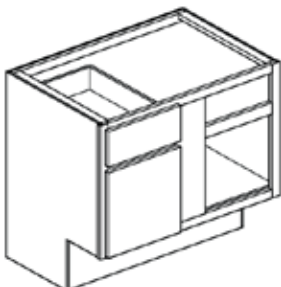
- Item Number - end with HA instead of HH
- Model Number - begin with HA instead of H

Blind Cabinets

Handicap Blind Corner Base Cabinets

1 Door

Specify Right or Left Blind (Right Blind shown)

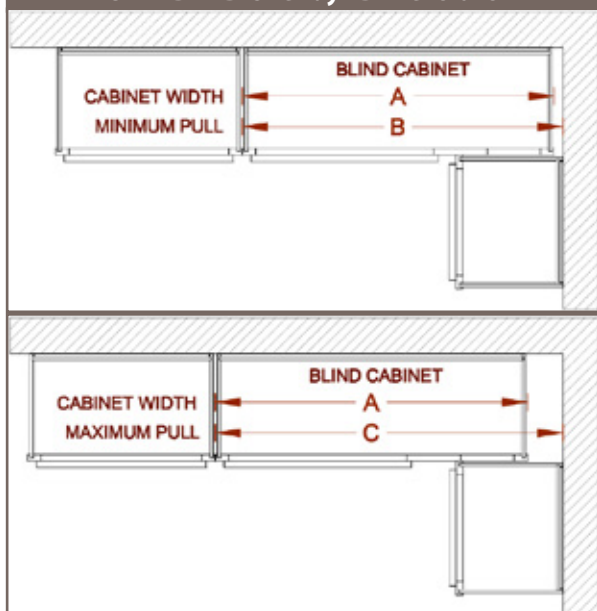


- One door
- Two hinges per door
- Soft close hinge and drawer upgrade available, see page 6
- One drawer
- Drawer weight capacity: 75 lbs
- Dovetail drawers standard
- One fixed shelf (Handicap Accessible ONLY)
- Specify L or R blind
- Premium all wood package upgrade available
- Please reference drawings below for (A), (B), (C), (D) cabinet measurements

| MODEL NUMBER | ITEM NUMBER | CAB. WIDTH (A) | MIN. S/O (B) | MAX. (C) | MIN. F/O (D) |
|--------------|-------------|----------------|--------------|----------|--------------|
| HBCC36-39 | BCC3624HH | 27 | 37 | 39 | 38 |
| HBCC39-42 | BCC3924HH | 30 | 39 | 42 | 40 |
| HBCC42-45 | BCC4224HH | 36 | 42 | 45 | 43 |
| HBCC45-48 | BCC4524HH | 42 | 45 | 48 | 46 |
| HBCC48-51 | BCC4824HH | 48 | 48 | 51 | 49 |

Illustration

STANDARD Overlay - Dimensions

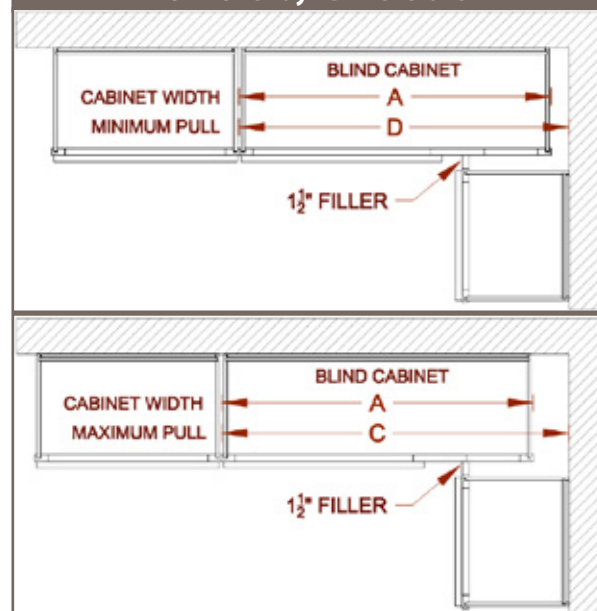


NOTE:
Dimensions in
illustrations do not
allow for hardware.

MINIMUM PULL
ILLUSTRATIONS

MAXIMUM PULL
ILLUSTRATIONS

FULL Overlay - Dimensions



Notes:

- All shelves and bottoms are rated to withstand 15 lbs. per square foot.
- For additional cabinet options, please see page 6.

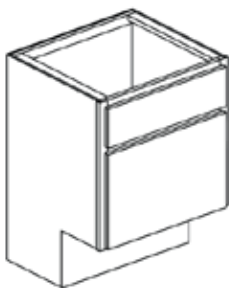
Handicap Accessible:

- Item Number - end with HA instead of HH
- Model Number - begin with HA instead of H

Vanity Cabinets

Handicap Vanity Sink Bases 18" - 24" Wide

18 or 24 W
18 or 21 D
32½ H



- One door
- Butt doors option on 24" W
- No drawer
- Two hinges per door
- No shelves
- Premium all wood package upgrade available
- Soft close hinge upgrade available, see page 6

MODEL NUMBER

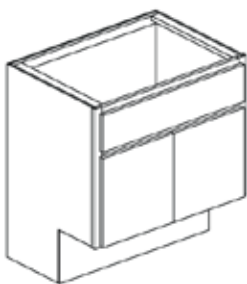
HVSB1818
HVSB18
HVSB2418
HVSB24

ITEM NUMBER

VS1818HH
VS1821HH
VS2418HH
VS2421HH

Handicap Vanity Sink Bases 27" - 36" Wide

27 - 36 W
21 D
32½ H



- Butt doors
- No drawer
- Two hinges per door
- No shelves
- Premium all wood package upgrade available
- Soft close hinge upgrade available, see page 6

MODEL NUMBER

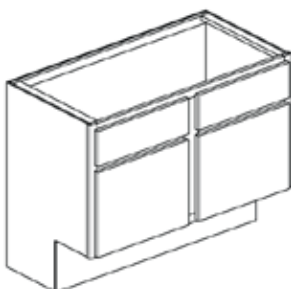
HVSB27
HVSB30
HVSB33
HVSB36

ITEM NUMBER

VS2721HH
VS3021HH
VS3321HH
VS3621HH

Handicap Vanity Sink Bases 39" - 48" Wide

39 - 48 W
21 D
32½ H



- Two doors
- No drawer
- Two hinges per door
- No shelves
- Premium all wood package upgrade available
- Soft close hinge upgrade available, see page 6

MODEL NUMBER

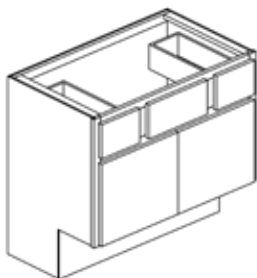
HVSB39
HVSB42
HVSB45
HVSB48

ITEM NUMBER

VS3921HH
VS4221HH
VS4521HH
VS4821HH

Handicap Vanity Sink Bases - Top Drawer 36" Wide

36 W
21 D
32½ H



- Butt doors
- Two drawers; one on each end
- Drawer weight capacity: 75 lbs
- Dovetail drawers standard
- Two hinges per door
- No shelves
- Premium all wood package upgrade available
- Soft close hinge and drawer upgrade available, see page 6

MODEL NUMBER

HVBT36

ITEM NUMBER

VBT3621HH

Notes:

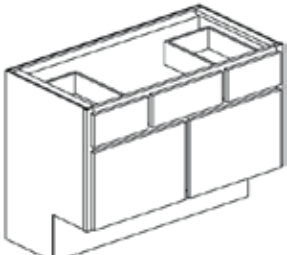
- All vanities include a finished toe kick.
- All shelves and bottoms are rated to withstand 15 lbs. per square foot.
- For additional cabinet options, please see page 6.

Handicap Accessible:

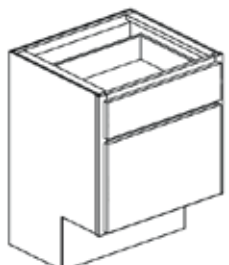
- Item Number - end with HA instead of HH
- Model Number - begin with HA instead of H

Vanity Cabinets

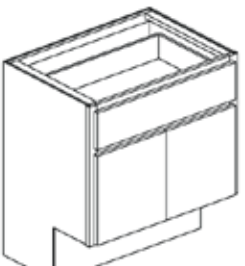
Handicap Vanity Sink Bases - Top Drawer 39" - 48" Wide

| | | | |
|---|--|---|--|
| <p>39 - 48 W 21 D 32½ H</p>  | <ul style="list-style-type: none"> • Two doors • Two drawers; one on each end • Drawer weight capacity: 75 lbs • Dovetail drawers standard • Two hinges per door • No shelves • Premium all wood package upgrade available • Soft close hinge and drawer upgrade available, see page 6 | <p>MODEL NUMBER</p> <p>HVBDT39 HVBDT42 HVBDT48</p> | <p>ITEM NUMBER</p> <p>VBT3921HH VBT4221HH VBT4821HH</p> |
|---|--|---|--|

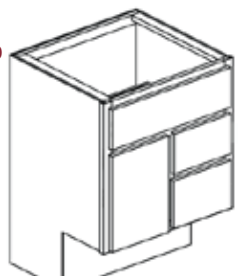
Handicap Vanity Base Cabinets 12" - 24" Wide

| | | | |
|---|--|---|--|
| <p>12 - 24 W 21 D 32½ H</p>  | <ul style="list-style-type: none"> • One door • Butt doors option on 24" W ONLY • One drawer • Drawer weight capacity: 75 lbs • Dovetail drawers standard • Two hinges per door • One fixed shelf (Handicap Accessible ONLY) • Premium all wood package upgrade available • Soft close hinge and drawer upgrade available, see page 6 | <p>MODEL NUMBER</p> <p>HVB12 HVB15 HVB18 HVB21 HVB24</p> | <p>ITEM NUMBER</p> <p>VAB1221HH VAB1521HH VAB1821HH VAB2121HH VAB2421HH</p> |
|---|--|---|--|

Handicap Vanity Base Cabinets 27" - 30" Wide

| | | | |
|--|---|---|--|
| <p>27 - 30 W 21 D 32½ H</p>  | <ul style="list-style-type: none"> • Butt doors • One drawer • Drawer weight capacity: 75 lbs • Dovetail drawers standard • Two hinges per door • One fixed shelf (Handicap Accessible ONLY) • Premium all wood package upgrade available • Soft close hinge and drawer upgrade available, see page 6 | <p>MODEL NUMBER</p> <p>HVB27 HVB30</p> | <p>ITEM NUMBER</p> <p>VAB2721HH VAB3021HH</p> |
|--|---|---|--|

Handicap Vanity Sink Bases - Drawer Bank

| | | | |
|--|--|---|--|
| <p>Drawer bank equivalent to 12" base</p> <p>24 or 30 W 18 or 21 D 32½ H</p>  | <ul style="list-style-type: none"> • One door • Two drawers • Drawer weight capacity: 75 lbs • Dovetail drawers standard • Two hinges per door • No shelves • Premium all wood package upgrade available • Soft close hinge and drawer upgrade available, see page 6 • Left drawer bank available: specify VBL instead of VBR | <p>MODEL NUMBER</p> <p>HVBRD2418 HVBRD24 HVBRD3018 HVBRD30</p> | <p>ITEM NUMBER</p> <p>VBR2418HH VBR2421HH VBR3018HH VBR3021HH</p> |
|--|--|---|--|

Notes:

- All vanities include a finished toe kick.
- All shelves and bottoms are rated to withstand 15 lbs. per square foot.
- For additional cabinet options, please see page 6.

Handicap Accessible:

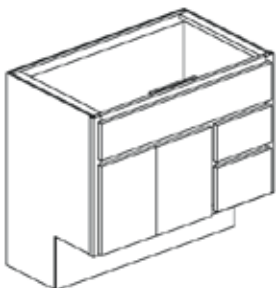
- Item Number - end with HA instead of HH
- Model Number - begin with HA instead of H

Vanity Cabinets

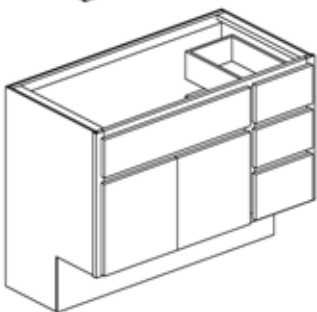
Handicap Vanity Sink Bases - Drawer Bank

Drawer bank equivalent to 12" base

36 W
18 or 21 D
32½ H



42 or 48 W
18 or 21 D
32½ H



- Butt doors
- 36 W cabinet: two drawers
- 42 or 48 W cabinet: three drawers
- Drawer weight capacity: 75 lbs
- Dovetail drawers standard
- Two hinges per door
- No shelves
- Premium all wood package upgrade available
- Soft close hinge and drawer upgrade available, see page 6
- Left drawer bank available: specify VBL instead of VBR

MODEL NUMBER

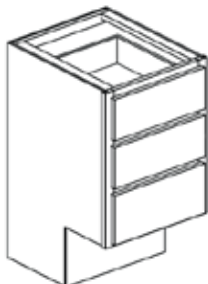
HVBRD3618
HVBRD36
HVBRD4218
HVBRD42
HVBRD48

ITEM NUMBER

VBR3618HH
VBR3621HH
VBR4218HH
VBR4221HH
VBR4821HH

Handicap Vanity Drawers

12 - 24 W
21 D
32 1/2 H



- Three drawers
- Drawer weight capacity: 75 lbs
- Dovetail drawers standard
- Soft close, full extension drawer upgrade available, see page 6
- Premium all wood package available

MODEL NUMBER

HVDB12
HVDB15
HVDB18
HVDB21
HVDB24

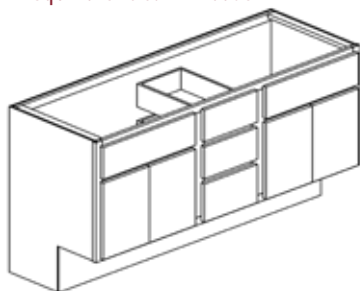
ITEM NUMBER

VDB1221HH
VDB1521HH
VDB1821HH
VDB2121HH
VDB2421HH

Handicap Vanity Sink Bases - Center Drawer Bank

Drawer bank equivalent to 12" base

60 W
21 D
32½ H



- Butt doors on each end
- Three center drawers
- Drawer weight capacity: 75 lbs
- Dovetail drawers standard
- Two hinges per door
- No shelves
- Premium all wood package upgrade available
- Soft close hinge and drawer upgrade available, see page 6

MODEL NUMBER

HVBCD60

ITEM NUMBER

VBC6021HH

Notes:

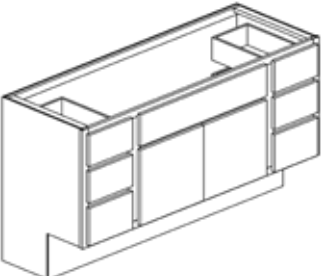
- All vanities include a finished toe kick.
- All shelves and bottoms are rated to withstand 15 lbs. per square foot.
- For additional cabinet options, please see page 6.

Handicap Accessible:

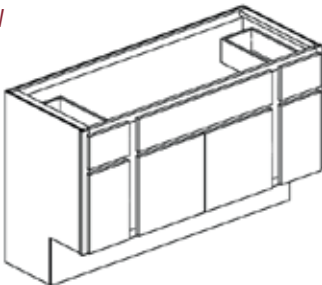
- Item Number - end with HA instead of HH
- Model Number - begin with HA instead of H

Vanity Cabinets

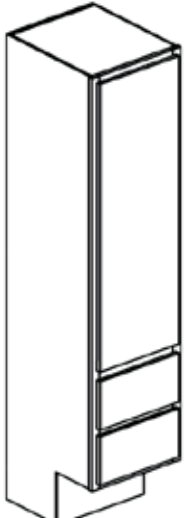
Handicap Vanity Sink Bases - Drawer Bank Each End

| | | | |
|--|--|---|--|
| <p>Drawer bank equivalent to 12" base</p> <p>48 or 60 W 18 or 21 D 32½ H</p>  | <ul style="list-style-type: none"> • Butt doors • Three drawers on each end (6 total) • Drawer weight capacity: 75 lbs • Dovetail drawers standard • Two hinges per door • No shelves • Premium all wood package upgrade available • Soft close hinge and drawer upgrade available, see page 6 | <p>MODEL NUMBER</p> <p>HVBEDB4818 HVBEDB48 HVBEDB6018 HVBEDB60</p> | <p>ITEM NUMBER</p> <p>VBE4818HH VBE4821HH VBE6018HH VBE6021HH</p> |
|--|--|---|--|

Handicap Vanity Starter Cabinets

| | | | |
|--|--|---|--|
| <p>54, 60, 72 W 21 D 32½ H</p>  | <ul style="list-style-type: none"> • Center butt doors and one door on each end • Two drawers • Drawer weight capacity: 75 lbs • Dovetail drawers standard • Two hinges per door • No shelves • Premium all wood package upgrade available • Soft close hinge and drawer upgrade available, see page 6 | <p>MODEL NUMBER</p> <p>HVSTB54 HVSTB60 HVSTB72</p> | <p>ITEM NUMBER</p> <p>VST5421HH VST6021HH VST7221HH</p> |
|--|--|---|--|

Handicap Utility Cabinet With Drawers

| | | | |
|---|--|--|--|
| <p>18 W 21 D 80 H</p>  | <ul style="list-style-type: none"> • One door • Handicap: two drawers • Handicap Accessible: three drawers • Drawer weight capacity: 75 lbs • Dovetail drawers standard • Two hinges per door • Three adjustable shelves • Premium all wood package upgrade available • Soft close hinge and drawer upgrade available, see page 6 | <p>MODEL NUMBER</p> <p>HUT182180 HAUT182180</p> | <p>ITEM NUMBER</p> <p>UH2182180 UA3182180</p> |
|---|--|--|--|

Notes:

- All vanities include a finished toe kick.
- All shelves and bottoms are rated to withstand 15 lbs. per square foot.
- For additional cabinet options, please see page 6.

Handicap Accessible:

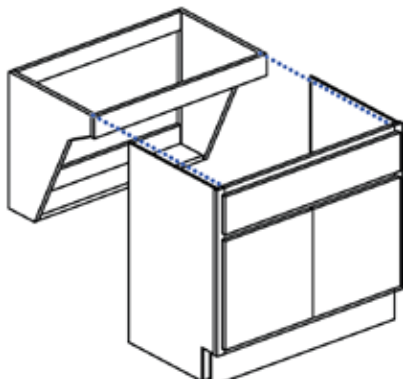
- Item Number - end with HA instead of HH
- Model Number - begin with HA instead of H

Removable Sink Bases/Oven Cabinets

Handicap Accessible Brackets and Removable Sink Bases

24, 30, 33, 36 W
21 D
32½ H

REMOVABLE



- Handicap Accessible ONLY
- One door standard on 24" W sink base; butt doors option available
- Butt doors on 30", 33", 36" W sink bases
- Two hinges per door

MODEL NUMBER

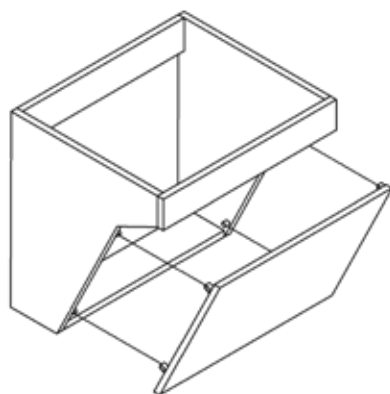
VBH2421
VBH3021
VBH3321
VBH3621

ITEM NUMBER

VBH2421HA
VBH3021HA
VBH3321HA
VBH3621HA

Handicap Bracket with Front Panel

24, 30, 33, 36 W
20 D
22 H



- Removeable front panel
- Sizes are true cabinet width

MODEL NUMBER

AFB242022E
AFB302022E
AFB332022E
AFB362022E

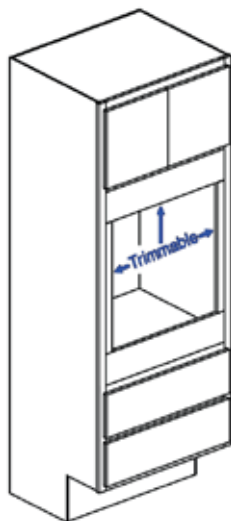
ITEM NUMBER

AFB242022E
AFB302022E
AFB332022E
AFB362022E

Handicap Oven Cabinets

Oven Opening:
Height = 27¼"
Width = 6" Less than
Cabinet Width (Trimable)

27, 30, 33 W
24 D
84, 90, 96 H



- Butt doors
- Handicap: two drawers
- Handicap Accessible (OAS): three drawers
- Drawer weight capacity: 75 lbs
- Dovetail drawers standard
- Drawers may be removed for Double Oven Cabinet
- Two hinges per door
- Drilled for shelving, shelf kits sold separately
- Shelf kits NOT available for 84" H Oven Cabinets
- Please reference shelf kits (page 36) for shelving options and sizes
- Premium all wood package upgrade available
- Soft close hinge and drawer upgrade available, see page 6

MODEL NUMBER

HOC272484
HOC272490
HOC272496
HOC302484
HOC302490
HOC302496
HOC332484
HOC332490
HOC332496

ITEM NUMBER

OHS272484
OHS272490
OHS272496
OHS302484
OHS302490
OHS302496
OHS332484
OHS332490
OHS332496

Notes:

- All shelves and bottoms are rated to withstand 15 lbs. per square foot.
- For additional cabinet options, please see page 6.

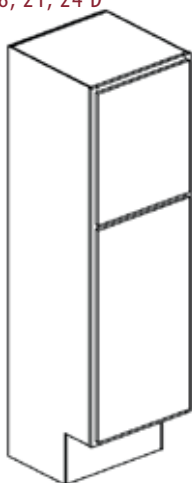
Handicap Accessible (Oven Cabinets):

- Item Number - Begin with OAS instead of OHS
- Model Number - begin with HA instead of H

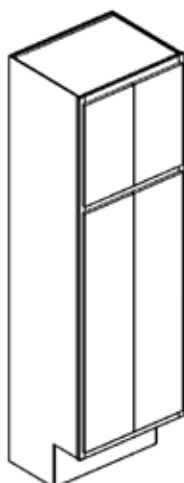
Utility Cabinets

84" Tall Handicap Utility Cabinets

18, 21, 24 W
12, 18, 21, 24 D
84 H



24 or 30 W
24 D
84 H



- Two doors
- Butt doors available on cabinet 24" or 30" wide
- Two hinges on top door, three hinges on bottom door
- Drilled for shelving, shelf kits sold separately
- Please reference shelf kits (page 15) for shelving options and sizes
- Premium all wood package upgrade available
- Soft close hinge upgrade available, see page 6
- Glass and mullion available in top doors only

MODEL NUMBER

HUC181284
HUC181884
HUC182184
HUC182484
HUC211284
HUC211884
HUC212184
HUC212484
HUC241284
HUC241884
HUC242184
HUC242484
HUC302484

ITEM NUMBER

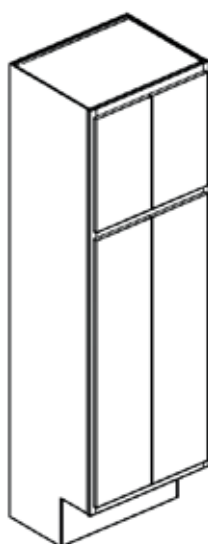
UHC181284
UHC181884
UHC182184
UHC182484
UHC211284
UHC211884
UHC212184
UHC212484
UHC241284
UHC241884
UHC242184
UHC242484
UHC302484

90" Tall Handicap Utility Cabinets

18, 21, 24 W
12, 18, 21, 24 D
90 H



24 or 30 W
24 D
90 H



- Two doors
- Butt doors available on cabinet 24" or 30" wide
- Two hinges on top door, three hinges on bottom door
- Drilled for shelving, shelf kits sold separately
- Please reference shelf kits (page 15) for shelving options and sizes
- Premium all wood package upgrade available
- Soft close hinge upgrade available, see page 6
- Glass and mullion available in top doors only

MODEL NUMBER

HUC181290
HUC181890
HUC182190
HUC182490
HUC211290
HUC211890
HUC212190
HUC212490
HUC241290
HUC241890
HUC242190
HUC242490
HUC302490

ITEM NUMBER

UHC181290
UHC181890
UHC182190
UHC182490
UHC211290
UHC211890
UHC212190
UHC212490
UHC241290
UHC241890
UHC242190
UHC242490
UHC302490

Notes:

- All shelves and bottoms are rated to withstand 15 lbs. per square foot.
- For additional cabinet options, please see page 6.

Handicap Accessible:

- Item Number - begin with UAC instead of UHC
- Model Number - begin with HA instead of H

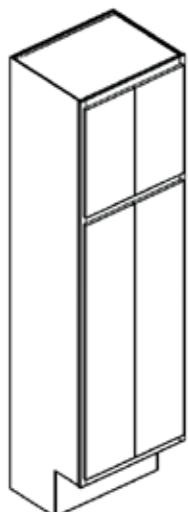
Utility Cabinets

96" Tall Handicap Utility Cabinets

18, 21, 24 W
12, 18, 21, 24 D
96 H



24 or 30 W
24 D
96 H



- Two doors
- Butt doors available on cabinet 24" or 30" wide
- Two hinges on top door, three hinges on bottom door
- Drilled for shelving, shelf kits sold separately
- Please reference shelf kits (page 15) for shelving options and sizes
- Premium all wood package upgrade available
- Soft close hinge upgrade available, see page 6
- Glass and mullion available in top doors only

MODEL NUMBER

HUC181296
HUC181896
HUC182196
HUC182496
HUC211296
HUC211896
HUC212196
HUC212496
HUC241296
HUC241896
HUC242196
HUC242496
HUC302496

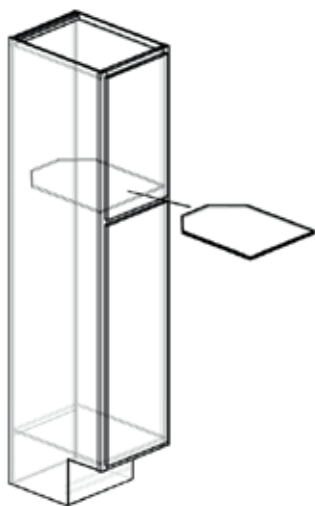
ITEM NUMBER

UHC181296
UHC181896
UHC182196
UHC182496
UHC211296
UHC211896
UHC212196
UHC212496
UHC241296
UHC241896
UHC242196
UHC242496
UHC302496

Handicap Broom Closet

15 W
24 D
84, 90, 96 H

Fixed shelf has corner relief to allow for broom handle (shown)



- Two doors
- Two hinges on top door, three hinges on bottom door
- Soft close hinge upgrade available, see page 6
- Drilled for shelving, shelf kits sold separately
- Please reference shelf kits (page 15) for shelving options and sizes
- Fixed shelf included
- Premium all wood package upgrade available
- Glass and mullion available in top doors only

MODEL NUMBER

HBC152484
HBC152490
HBC152496

ITEM NUMBER

UHB152484
UHB152490
UHB152496

Notes:

- All shelves and bottoms are rated to withstand 15 lbs. per square foot.
- For additional cabinet options, please see page 6.

Handicap Accessible:

- Item Number - Utility Cabinets begin with UAC instead of UHC; Broom Closet begin with UAB instead of UHB
- Model Number - begin with HA instead of H

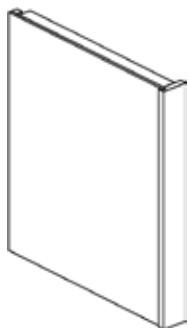
Toe Kicks and Panels

Handicap Toe Kicks

| <ul style="list-style-type: none"> Available by the piece (P) or by the box (B). Boxes come with 12 pieces. Available in Handicap (ATH) or Handicap Accessible (ATA). | <ul style="list-style-type: none"> ATH: 9" H ATA: 5½" H Painted finishes (laminated) | MODEL NUMBER | ITEM NUMBER |
|--|---|--------------|-------------|
| | | HTK8P | ATH08P |
| | | HTK8B | ATH08B |
| | | HATK8P | ATA08P |
| | | HATK8B | ATA08B |

Handicap Dishwasher Panels with Filler

Dishwasher End Panel
(shown with 3" filler)

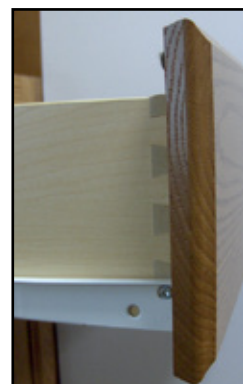
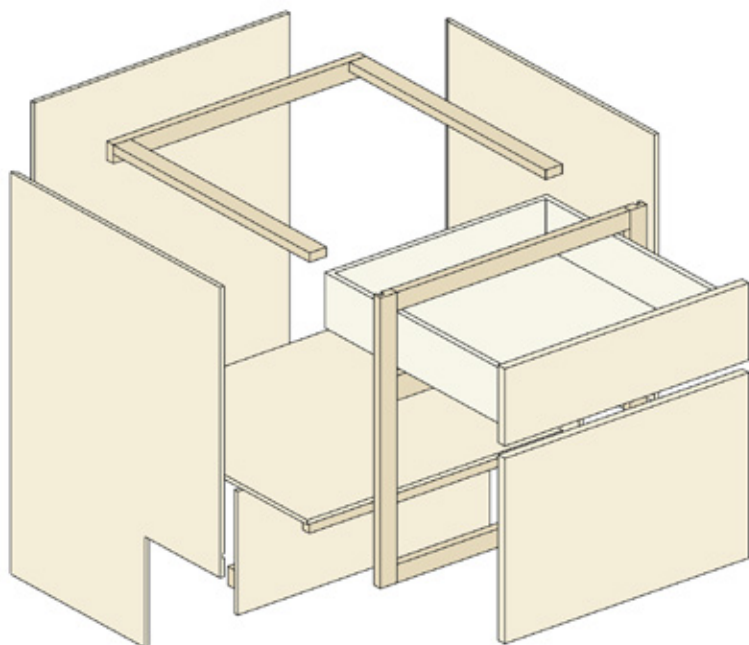


| <ul style="list-style-type: none"> Available with a 1½" or 3" filler. Panel with filler gets cleats on three sides. Premium all wood package upgrade available. Available in Handicap (HHE) or Handicap Accessible (HAE). | MODEL NUMBER | ITEM NUMBER |
|---|--------------|-------------|
| | HDWP1.5 | APD0124HHE |
| | HDWP3 | APD0324HHE |
| | HADWP1.5 | APD0124HAE |
| | HADWP3 | APD0324HAE |

Handicap End Panels with Edge Banding

| <ul style="list-style-type: none"> ¾" thick plywood (not available in MDF) Edge Banding: thin layer of veneer applied along the sides of panel. Edge banded on ONE side. Finished on both sides; matches the finish of the cabinet. Painted finishes (laminated) | MODEL NUMBER | ITEM NUMBER |
|---|--------------|-------------|
| | BEP32X.75 | PMV2432A6E |

Handicap Base Cabinet Specifications - STANDARD & PREMIUM



Cabinet Fronts

- $\frac{3}{4}$ " solid wood
- Front stiles are pocket drilled and assembled with $\frac{1}{4}$ " screws for rugged durability

Side Panels

- $\frac{3}{8}$ " particle board
- **Premium option: $\frac{3}{8}$ " plywood**
- Vinyl covered on both sides
- Glued and stapled in a $\frac{3}{8}$ " dado in the cabinet's front frame

Back Panels

- $\frac{3}{8}$ " particle board
- **Premium option: $\frac{3}{8}$ " plywood**
- Vinyl covered on inside ONLY
- Glued and nailed in $\frac{3}{8}$ " dado and stapled to the hang rail and cabinet bottom

Floor Panels

- $\frac{3}{8}$ " particle board
- **Premium option: $\frac{3}{8}$ " plywood**
- Vinyl covered on inside ONLY

Hanging Rails

- $\frac{3}{4}$ " x $1\frac{1}{2}$ " all wood
- Installed on sides and back

Toe Kick

- Handicap (HH): 9" H x 9" D
- Handicap Accessible (HA): $5\frac{1}{2}$ " H x 4" D

Shelves (Handicap Accessible ONLY)

- Fixed $\frac{1}{2}$ " MDF
- **Premium option: Fixed $\frac{1}{2}$ " plywood**
- Bullnose, foil-covered front edges

Drawers

- $\frac{1}{2}$ " MDF
- **NOTE: Cabinets 27" - 36" W use $\frac{1}{2}$ " finished solid wood**
- **Premium option: $\frac{1}{2}$ " finished solid wood**
- Bullnose, foil-covered top edges
- Dovetail construction standard
- Drawers glide smoothly on self-adjusting ball bearing nylon guides

Doors

- Butt Doors: Available on 24" W Cabinets, Standard on 27" - 36" W
- Door Construction Specifications are on pages 10-14

Finish

All cabinet front and door surfaces receive stain and a catalyzed clear or a catalyzed paint finish. Our finish provides a deep, rich wood tone that is resistant to household chemicals, water, food stains and mild acids.

Hinges

Hidden, self-closing adjustable hinge

Optional Construction Features

See page 6 for option details



Kountry Wood Products Limited Lifetime and Five-Year Warranty

Kountry Wood cabinets have been manufactured under the highest standards of quality and workmanship.

Lifetime Limited Warranty on Drawer Guides and Hinges

Kountry Wood Products warrants to original consumer purchasers for as long as they own their home that the drawer, drawer guides and hinges used in the manufacture of Kountry Wood Products cabinetry products shall be free from defects in material and workmanship under normal use.

Five Year Limited Warranty on Cabinets

In addition, Kountry Wood Products warrants to original consumer purchasers for a period of five-years from the original date of purchase that all other components of Kountry Wood Products cabinetry shall be free from defects in material and workmanship under normal use.

General Warranty Guidelines

Opaque Finishes are uniquely different from standard wood finishes. On all wood products, expansion and contraction are typical due to changes in climate conditions. Due to this normal movement, Opaque Finishes may develop slight separation lines, finish breaks and seam lines. These will be most notable at stile, rail and panel joints. Joint separations may become more noticeable over time and through season changes. These are normal and are not considered quality defects. Should Kountry Wood Products cabinetry fail during the applicable warranty period due to defects in the material or workmanship under normal use, Kountry Wood Products, at its discretion, will repair or provide the parts necessary to replace the defective products. This warranty does not cover products that are misused, abused, mishandled, improperly installed, improperly stored, changed, modified or subject to extreme temperatures or extreme moisture levels. This warranty is not valid for products used for any purpose other than the purpose for which they were originally intended. This warranty does not cover the cost of installation, removal, subsequent damage or transportation of the defective product, regardless of whether the work was performed by a contractor, service company or the consumer. Variations in color and grain pattern are a natural characteristic of wood. Color changes also may result from exposure to light and other elements that are part of the aging process. These material variations and changes are not covered by this warranty. Kountry Wood Products reserves the right to substitute discontinued product with the most similar product in styling, wood species and color available at the time a claim is submitted.

This warranty is the exclusive warranty of Kountry Wood Products and is in lieu of all other warranties, expressed or implied. In no event shall Kountry Wood Products be liable for consequential, indirect or incidental damages resulting from the installation, use or failure of its product. Some states do not allow the exclusion or limitation of incidental or consequential damages, so the above limitations or exclusions may not apply to you. This warranty gives you specific legal rights and you may also have other rights that vary from state to state. To submit a claim under this warranty, contact your nearest Kountry Wood Products dealer or send a letter explaining the defect along with a dated sales receipt as proof of purchase to:

Kountry Wood Products

352 Shawnee St - Nappanee, IN 46550

Revision T
Published January 2020



American Made Cabinetry

352 Shawnee St. - Nappanee, IN 46550

Toll Free: 800-608-8969

Phone: 574-773-5673

Fax: 574-773-7013

www.kountrywood.com



ANSI/KCMA A161.1



KITCHEN CABINET MANUFACTURERS ASSOCIATION,
ENVIRONMENTAL STEWARDSHIP PROGRAM (ESP).
ALL PRODUCTS IMPACT THE ENVIRONMENT.
FOR ESP PROGRAM CRITERIA, VISIT KCMA.ORG