



CONTRACTOR'S
CHOICE®

PRICING AND SPECIFICATIONS

Effective January 2019. Supersedes all prior versions.

NEW PRODUCT
First order date January 7, 2019

Door Style/Finish Expansions

Umber Stain on Albany and Clarkson Door Styles, see page 6

TABLE OF CONTENTS

Product Description Index	2
Product Code Index	3
Characteristics of Wood	4
Characteristics of Laminate	4
Humidification Effects	4
Full and Partial Overlay Specifications	5
Common Style Numbers	5
Door Styles/Door Style Numbers/Finish Availability	6-7
Finish Descriptions and Process	8
Construction Specifications	9-13
Wall Cabinets	14-22
Wall Cabinets/Straight	14-18
Wall Cabinets/Corner	19-22
Wall Cabinets/End	22
Base Cabinets	23-29
Base Cabinets/Straight	23-24
Base Cabinets/Sink	25-26
Base Cabinets/Drawer	27
Base Cabinets/Corner	27-29
Base Cabinets/End	29
Tall Cabinets	30-32
Vanity Cabinets	33-36
Universal Design Cabinets	37-42
Mouldings/Trim/Fillers	43-45
Panels	46-48
Accessories & Parts	49-52
Warped Door Policy/Cabinet Care Suggestions	53
Policies/Information	54
Warranty	55-56

Description	Code	Page	Description	Code	Page
Base Cabinet	B	23	Removable Vanity Wall Sink Cabinet	RVWS	42
Base Cabinet Universal Design	B..32.5	37	Roll Tray Kit	TKIT	50
Base Cabinet w/Full Height Doors Universal Design	B..32.5FH	37	Sink Base Universal Design	SB..32.5	38
Base Cabinet w/Full Height Doors, 12" Deep	B..FH-12	24	Sink Front Corner	SFC	26
Base Cabinet w/Tray Divider	B..TD	23	Sink Front End Panel	PSFEP	46
Base Corner	BC	29	Sink Front Universal Design	SF..32.5	38
Base Corner Cabinet Universal Design	BC..32.5	41	Sink/Range Base	SB	25
Base End Cabinet	BEL	29	Sink/Range Front	SF	26
Base Wastebasket	BWB	24	Sink Tilt-out Trays	STOT..WH	51
Batten Moulding	MBAT8	45	Square Corner Easy Reach Cabinet	SCER	27
Crown Moulding	MCROWN8	44	Square Corner Roto Base	SCR	27
Cove Moulding	MCV8	44	Square Corner Roto Base Universal Design	SCR..32.5	39
Diagonal Corner Wall Cabinet	DC	19	Square Corner Wall Cabinet	SC	21
Double Wastebasket Roll-out Kit	DWBR	51	Stock Panel - Aristex™ Laminate	PA	47
End Panel w/Stile	PEPR	46	Stock Panel - Veneer	P	47
Filler	F	45	Stock Panel - Veneer	PP	47
Frame Spacer	HNGSPCRF	52	Sink Unit w/Front Panel Universal Design	SU..32.5	39
Full Overlay Crown Moulding	MFOLCR8	44	Tall Crown Moulding	MTCROWN8	44
Hinge Spacer	HNGSPCRD	52	Three Drawer Base	DB	27
Hinge Angle Restrictor Clip	HNGRESCLP	52	Three Drawer Base Universal Design	DB..32.5	39
Laminate End Panel	EPA	48	Trim Moulding	MTW8	43
Outside Corner Moulding	MOCW8	43	Toekick	TOEKICK	48
Oven Cabinet	OCSD	30	Toekick Cap	TKC	49
Pantry Roll Tray Kit	UPK	50	Touch-up Kit	TUKIT	52
Plywood End Panel w/Stile	PEPRPLY	46	Utility Cabinet	U	31
Plywood Refrigerator End Panel w/Stile	PREPRP	46	Utility Shelf Kit	UKS	49
Plywood Sink Front End Panel	PSFEPLY	46	Valance Straight	V..ST	45
PureStyle™ Full Overlay Crown Moulding	PSMFOLCR8	44	Vanity Base	VB	33
PureStyle™ Crown Moulding	PSMCROWN8	44	Vanity Console Base	VCB	35
PureStyle™ Quarter Round Moulding	PSMQR8	45	Vanity Drawer Trimmable	VDT..B	36
PureStyle™ Scribe Moulding	PSMSW8	43	Vanity Sink Base	VSF	34
PureStyle™ Tall Crown Moulding	PSMTCROWN8	44	Vanity Sink Base Universal Design	VSF..32.5	41
PureStyle™ Trim Moulding	PSMTW8	43	Vanity Tapered End Panel	VTEP32.5	48
Quarter Round Moulding	MQR8	45	Vanity Three Drawer Base	VDB	35
Refrigerator End Panel	PREF	46	Vanity Wall Sink Cabinet	VWS	42
Refrigerator End Panel w/Stile	PREPR	46	Veneer End Panel	EPV	47
Refrigerator Wall Cabinet	RW	18	Wall Cabinet	W	14
Removable Sink Bases w/Front Panel	RSB	25	Wall End Cabinet	WEC	22
Removable Sink Bases w/Front Panel Universal Design	RSB..32.5	38	Wood Scribe Moulding	MSW8	43

Code	Description	Page	Code	Description	Page
B	Base Cabinet	23	PSMCROWN8	PureStyle™ Crown Moulding	44
B..32.5	Base Cabinet Universal Design	37	PSMFOLCR8	PureStyle™ Full Overlay Crown Moulding	44
B..32.5FH	Base Cabinet w/Full Height Doors Universal Design	37	PSMQR8	PureStyle™ Quarter Round Moulding	45
B..FH-12	Base Cabinet w/Full Height Doors, 12" Deep	24	PSMSW8	PureStyle™ Scribe Moulding	43
B..TD	Base Cabinet w/Tray Divider	23	PSMTCROWN8	PureStyle™ Tall Crown Moulding	44
BC	Base Corner	29	PSMTW8	PureStyle™ Trim Moulding	43
BC..32.5	Base Corner Cabinet Universal Design	41	RSB	Removable Sink Bases w/Front Panel	25
BWB	Base Wastebasket	24	RSB..32.5	Removable Sink Bases w/Front Panel Universal Design	38
DB	Three Drawer Base	27	RVWS	Removable Vanity Wall Sink Cabinet	42
DB..32.5	Three Drawer Base Universal Design	39	RW	Refrigerator Wall Cabinet	18
BEL	Base End Cabinet	29	SB	Sink/Range Base	25
DC	Diagonal Corner Wall Cabinet	19	SB..32.5	Sink Base Universal Design	38
DWBR	Double Wastebasket Roll-out Kit	51	SC	Square Corner Wall Cabinet	21
EPA	Laminate End Panel	48	SCER	Square Corner Easy Reach Cabinet	27
EPV	Veneer End Panel	47	SCR	Square Corner Roto Base	27
F	Filler	45	SCR..32.5	Square Corner Roto Base Universal Design	39
HNGSPCRD	Hinge Spacer	52	SF	Sink/Range Front	26
HNGSPCRF	Frame Spacer	52	SF..32.5	Sink Front Universal Design	38
HNGRESCLP	Hinge Angle Restrictor Clip	52	SFC	Sink Front Corner	26
MBAT8	Batten Moulding	45	STOT..WH	Sink Tilt-out Trays	51
MCROWN8	Crown Moulding	44	SU..32.5	Sink Unit w/Front Panel Universal Design	39
MCV8	Cove Moulding	44	TKC	Toekick Cap	49
MFOLCR8	Full Overlay Crown Moulding	44	TKIT	Roll Tray Kit	50
MOCW8	Outside Corner Moulding	43	TOEKICK	Toekick	48
MQR8	Quarter Round Moulding	45	TUKIT	Touch-up Kit	52
MSW8	Wood Scribe Moulding	43	U	Utility Cabinet	31
MTCROWN8	Tall Crown Moulding	44	UPK	Pantry Roll Tray Kit	50
MTW8	Trim Moulding	43	UKS	Utility Shelf Kit	49
OCS	Oven Cabinet	30	V..ST	Valance Straight	45
P	Stock Panel - Veneer	47	VB	Vanity Base	33
PA	Stock Panel - Aristex™ Laminate	47	VCB	Vanity Console Base	35
PEPR	End Panel w/Stile	46	VDB	Vanity Three Drawer Base	35
PEPRPLY	Plywood End Panel w/Stile	46	VDT..B	Vanity Drawer Trimmable	36
PP	Stock Panel - Veneer	47	VS	Vanity Sink Base	34
PREF	Refrigerator End Panel	46	VS..32.5	Vanity Sink Base Universal Design	41
PREPR	Refrigerator End Panel w/Stile	46	VTEP32.5	Vanity Tapered End Panel	48
PREPRP	Plywood Refrigerator End Panel w/Stile	46	VWS	Vanity Wall Sink Cabinet	42
PSFEP	Sink Front End Panel	46	W	Wall Cabinet	14
PSFEPLY	Plywood Sink Front End Panel	46	WEC	Wall End Cabinet	22

Wood Types

No matter which wood type you choose for your new kitchen or bath cabinetry, please keep in mind that no two pieces of wood are exactly the same. Stains are likely to exaggerate the difference between open and closed grains and other markings in wood. Grain variation and color change should be expected. As hardwood ages, it will darken when exposed to different types of light. Color differences or changes in wood can also be caused by exposure to harsh chemicals, extreme heat, or other contributing external conditions. Additionally, wood species exhibit other defining characteristics, such as mineral deposits/streaks, knots, sap runs, pin holes, and wormholes. These markings make the wood unique and contribute to its enduring beauty.



Oak

- ▶ Very strong wood with distinct grain patterns
- ▶ Grain variations create a color gradation when stain is applied
- ▶ Grain patterns include fine lines, pin stripes, leafy grains, and watery figures



Birch

- ▶ Even-textured, fine-grained wood with a curly or wavy pattern
- ▶ Strong with a high resistance to abrasion
- ▶ Smooth, dense surface texture
- ▶ Tight wood grain appearance

Characteristics of Laminates

Thermofoil

- ▶ Doors & drawer fronts are shaped MDF core covered with a seamless vinyl laminate on face & edges, and a melamine laminate on back
- ▶ Vinyl laminate is applied to MDF with an adhesive using heat & pressure
- ▶ Creates a product with excellent wear and heat resistance properties

Humidification

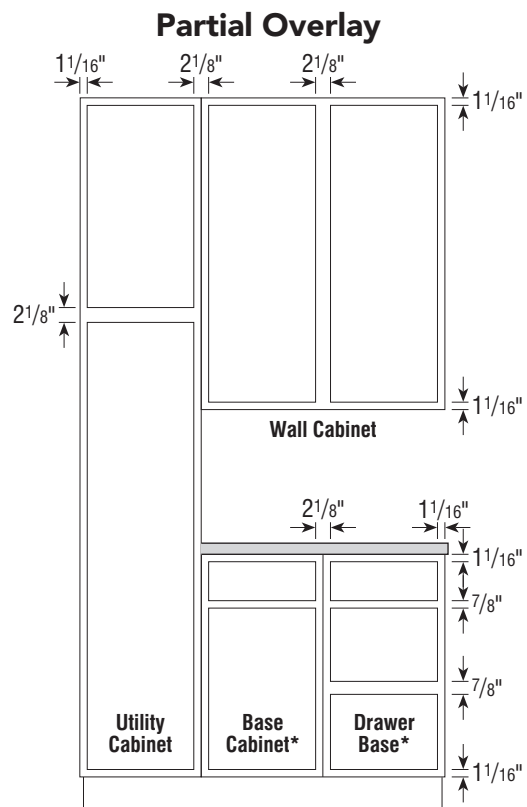
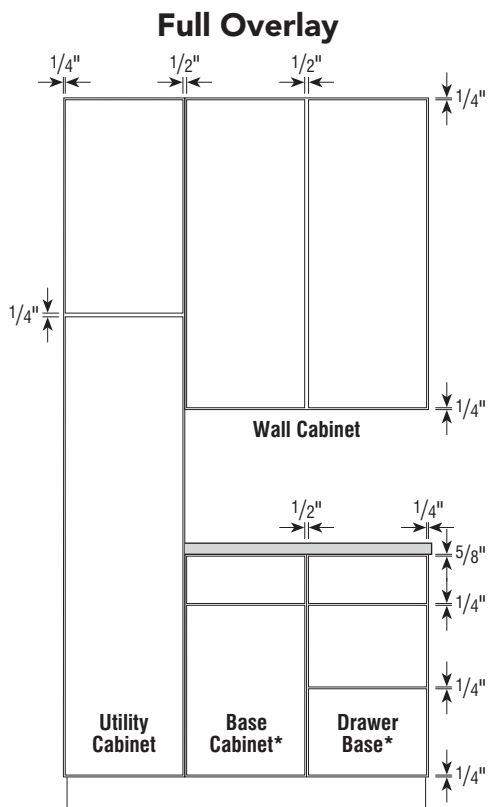
Cabinet components are typically manufactured at a target range of 40%–50% relative humidity. This works well because even unhumidified homes stay between 20% and 70% in normal years with typical cooking and washing activities.

In extremely cold, dry winters some doors can be exposed to conditions where relative humidity is below 20% for weeks at a time, causing shrinkage to occur. Conversely, where in-home relative humidity exceeds 70% for extended periods of time, expansion could occur. In certain geographic locations of the country, it is natural for the humidity to reach and remain at 80% for several weeks during the new construction period. Exposure to sustained conditions such as these could cause opening of the joints, and will not be considered as a reason for product replacement.

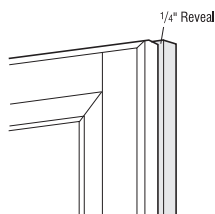
Contractor's Choice recommends product be stored and installed in an atmosphere where the humidity level and temperature are controlled.

Steps Consumers Can Take To Protect Real Wood Furnishings

- **Keep an eye on the humidity inside the home.** Reasonably accurate digital thermometers-hygrometer units are available to measure humidity.
- **Maintain the humidity at or above 20% when the temperature is below 20 degrees and over 35% when the temperature is above 20 degrees.** Some ways this may be accomplished are installing a whole-house humidifier on the furnace, running a portable humidifier in key rooms, or placing pans of water near the heat registers.
- **Don't over do it.** Significant condensation on windows is a sign the humidity levels are too high for outside temperature conditions.
- **Recognize that finished wood responds to humidity over a period of several days to several weeks.** It takes time before the wood returns to normal after any correction to the environment.

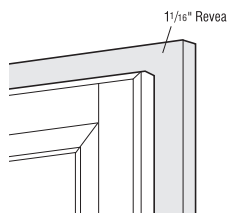


*35" high application shown
One double door center stile cabinet has the same reveal as two single door cabinets.



Full Overlay

- Full overlay doors reveal 1/4" of the cabinet face frame.



Partial Overlay 7/16"

- Partial overlay doors reveal 1 1/16" of the cabinet face frame.

Common Style Numbers for Finishes



In addition to the style numbers for door styles, there are several common items such as mouldings, panels, valances, fillers, organizers, wood hood units, open shelf units, and other parts that have been changed to a common style number based on finish. Look for the symbol (shown left) used throughout this book indicating Common Items. Please reference these common style numbers in the chart below.

Birch Autumn*	032
Birch Rouge*	034
Birch Saddle*	036
Birch Sarsaparilla*	035
Birch Umber	037
Oak Wheat	030
Thermofoil/White**	031

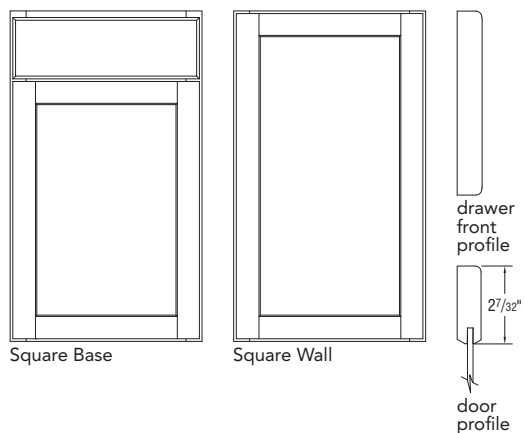
* Use Maple for Birch common items.

** White common style items will be painted hardwood.

	Miscellaneous Style	011	Miscellaneous items such as Utility Shelf Kits, Roll Tray Kits, and Sink Tilt-out Kits should use Common Style #011.
---	---------------------	-----	--

DOOR STYLES

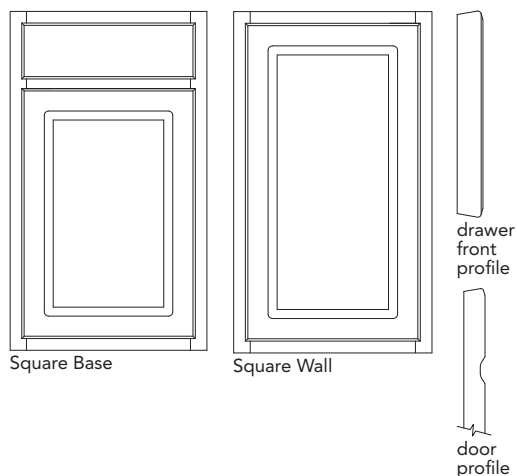
Albany



FINISH AVAILABILITY				
Species	Finish	Standard Construction	All-plywood Construction	Common Style
Birch	Autumn	11W	12W	032
	Rouge	11Y	12Y	034
	Saddle	11V	12V	036
	Sarsaparilla	11Z	12Z	035
	Umber	11U	12U	037

- Full Overlay
- Flat Veneer Center Panel
- 3/4" Thick Solid Birch Door Rail
- Hardware Recommended

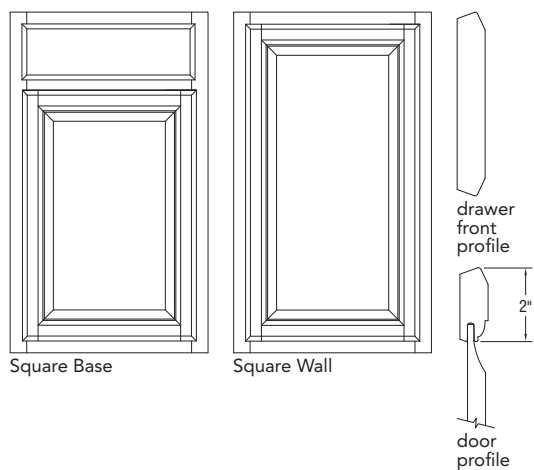
Bartlett



FINISH AVAILABILITY				
Species	Finish	Standard Construction	All-plywood Construction	Common Style
Thermofoil	White	13C	14C	031

- 7/16" Overlay
- Raised Center Panel
- Thermofoil Heat Formed and Glued Over a 3/8" MDF Core
- Beveled Edges on Outside of Door Frame and Drawer Front
- No Hardware Required

Clarkson

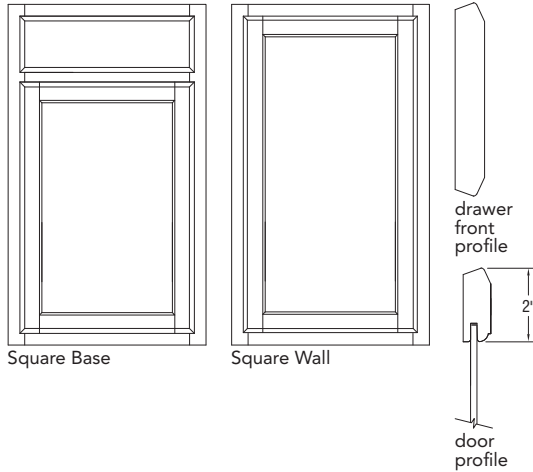


FINISH AVAILABILITY				
Species	Finish	Standard Construction	All-plywood Construction	Common Style
Birch	Autumn	13K	14K	032
	Rouge	13M	14M	034
	Saddle	13V	14V	036
	Sarsaparilla	13N	14N	035
	Umber	13R	14R	037

- 7/16" Overlay
- Raised Veneer Center Panel
- 3/4" Thick Solid Birch Door Rail
- Reverse Bevel Profile, No Hardware Required

DOOR STYLES

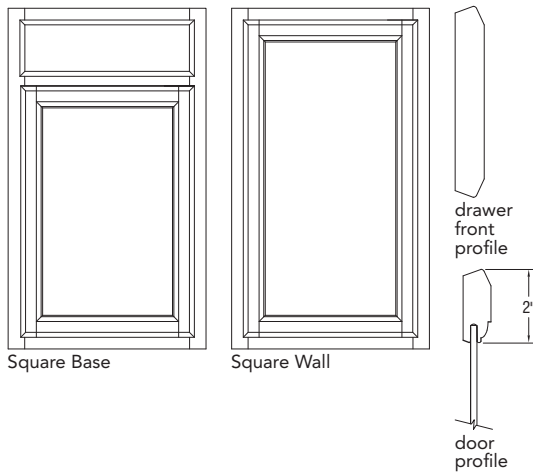
Hammond



FINISH AVAILABILITY				
Species	Finish	Standard Construction	All-plywood Construction	Common Style
Oak	Wheat	13B	14B	030

- ▶ 7/16" Overlay
- ▶ Flat Veneer Center Panel
- ▶ 3/4" Thick Solid Oak Door Rail
- ▶ Reverse Bevel Profile, No Hardware Required

Newberry



FINISH AVAILABILITY				
Species	Finish	Standard Construction	All-plywood Construction	Common Style
Birch	Autumn	13F	14F	032
	Rouge	13J	14J	034
	Saddle	13H	14H	036
	Sarsaparilla	13P	14P	035
	Umber	13A	14A	037

- ▶ 7/16" Overlay
- ▶ Flat Veneer Center Panel
- ▶ 3/4" Thick Solid Birch Door Rail
- ▶ Reverse Bevel Profile, No Hardware Required

Finish Descriptions

	FINISH NAME	DESCRIPTION
Stain	Autumn	Mid-tone stain with warm, copper tones
	Rouge	Traditional, cinnamon red tones
	Saddle	Medium, warm brown stain
	Sarsaparilla	Rich, deep brown stain
	Umber	Medium to dark brown stain
	Wheat	Light stain with golden undertones
Thermofoil™	White	A pure white color

Finishing Process

Contractor's Choice offers a variety of cabinet construction and finish options in order to allow for maximum design flexibility. Below are details about wood characteristics to assist you in deciding on a wood type and finish.

The Contractor's Choice finishing process starts with top quality lumber that is sanded down to reach difficult areas before the doors are assembled. After assembly, each door is inspected before a toner is applied with a spray. After applying toner to each door, drawer front, and face frame, a layer of stain is added using a spray finish which is then hand-rubbed into the wood for maximum penetration and long-lasting beauty. A catalyzed varnish is then applied during the finishing process to fill the grain. Finally, a UV topcoat is applied onto the door, providing a protective layer and beautiful, lasting finish. A final inspection is given at the end of the process to ensure each door is ready for cabinet assembly.

The finish you select for your door style is just as important as the wood type. Each piece of wood will react differently to the finish material used, resulting in a slight variation in shade within and between cabinets. When natural, light, or tinted finishes are applied, the natural grain characteristics are apparent. For easy care and lasting beauty, Contractor's Choice covers interior surfaces of cabinet walls, backs, and shelves with Aristex™ surface, a urethane-coated laminate.

CABINET CONSTRUCTION OPTIONS			
		STANDARD	ALL-PLYWOOD*
CABINET CONSTRUCTION OPTIONS	SIDES	3⁄8" Thick Furniture Board with Matching Interior	3⁄8" Thick Plywood, Laminated Interior and Exterior Sides
	BACK	3⁄8" Thick Furniture Board	3⁄8" Thick Plywood, Laminated Interior and Exterior Sides
	TOP & BOTTOM (Wall)	1⁄2" Thick Furniture Board	1⁄2" Thick Plywood
	BOTTOM (Base)	3⁄8" Thick Furniture Board	3⁄8" Thick Plywood, Laminated Interior and Exterior Sides
	CORNERS	Four Furniture Board Corner Braces	Two Plywood Stretcher Rails, except on B15FH-12, B18FH-12, B21FH-12, B24FH-12, B30FH-12, B36FH-12, VSB1832.516, which utilize corner braces
	SHELVES (Wall and Tall)	Adjustable 3⁄4" Thick Full Depth Furniture Board (15 pounds maximum weight per square foot)	Adjustable 3⁄4" Thick Full Depth Plywood (15 pounds maximum weight per square foot)
	SHELVES (Base)	Adjustable 3⁄4" Thick Half Depth Furniture Board Adjustable 3⁄4" Thick Full Depth Furniture Board on Full Height Base Cabinets (Exclusions apply as noted throughout the book)	Adjustable 3⁄4" Thick Half Depth Plywood Adjustable 3⁄4" Thick Full Depth Plywood on Full Height Base Cabinets (Exclusions apply as noted throughout the book)
	TOEKICK	3⁄8" Thick x 4" High Furniture Board, Recessed 33⁄8", Unfinished (Requires cover: TOEKICK/TOEKICK8)	3⁄8" Thick x 4" High Plywood, Recessed 33⁄8", Unfinished (Requires cover: TOEKICKPLY/TOEKICKPLY8)
	FACE FRAME (Wall)	3⁄4" x 1½" Solid Wood	
	FACE FRAME (Base)	3⁄4" x 1½" Solid Wood, 3" Center Stile	
	INTERIOR COMPONENTS	Aristex™ Maple Laminate	
HINGES	Adjustable, Fully Concealed, Steel Hinges		
DRAWER CONSTRUCTION OPTIONS	DRAWER CONSTRUCTION OPTIONS		
		STANDARD	ALL-PLYWOOD
	BOX	1⁄2" Thick Furniture Board with Aristex™ Natural Maple Laminate	1⁄2" Thick Hardwood
	BOTTOM	3⁄8" Thick Furniture Board, (Stapled into Front & Back)	3⁄8" Thick Plywood, (Stapled into Front & Back)
	GUIDES	Side-mount, Epoxy-Coated, Double Rails, Captured on Two Sides, Built-In Drawer Stop	
	JOINERY	Stapled, Butt Joint	
	DEPTH	20" Deep Base, 18" Deep Vanity	
	CAPACITY	Rated at 75 lbs. Capacity per drawer for all guides	

*Depending upon application, plywood components may contain MDF or Particleboard in accordance with ANSI/HPVA HP-1 standards.



Cabinet Specification Reference

- ▶ Number above wall cabinet represents height of cabinet.
- ▶ 1½" Top and Bottom Rails on most cabinets.
- ▶ 1½" Vertical Stiles on most cabinets, except OCSD Cabinets.
- ▶ Drawer box opening heights are 4½" for small and 9½", 9¾", or 10⅞" for large (deep) drawers.

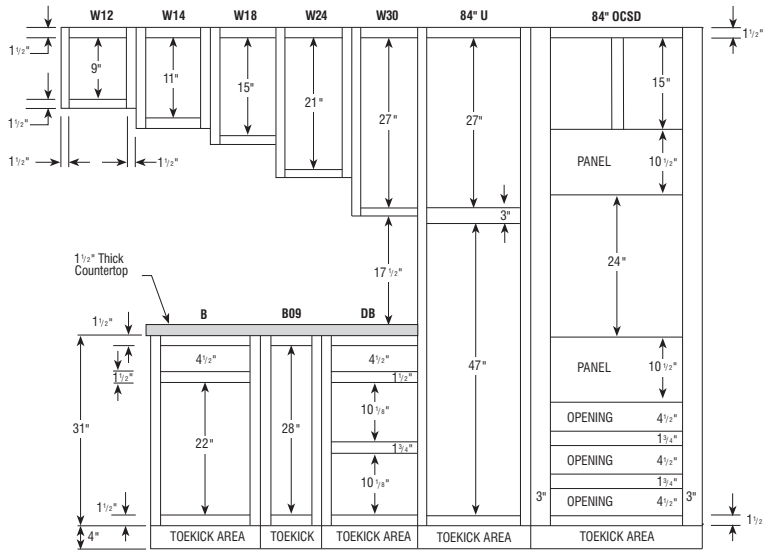
7/16" Overlay Door Styles:

- ▶ 1⅛" Reveal around doors (1⅛" of Face Frame shows).
- ▶ Door size for Single Door Cabinets: Frame opening + 7/8"
- ▶ Door size for Butt Door Cabinets: (Frame opening + ¾")/2
- ▶ 4½" High Drawer opening = 5⅞" Drawer Front.

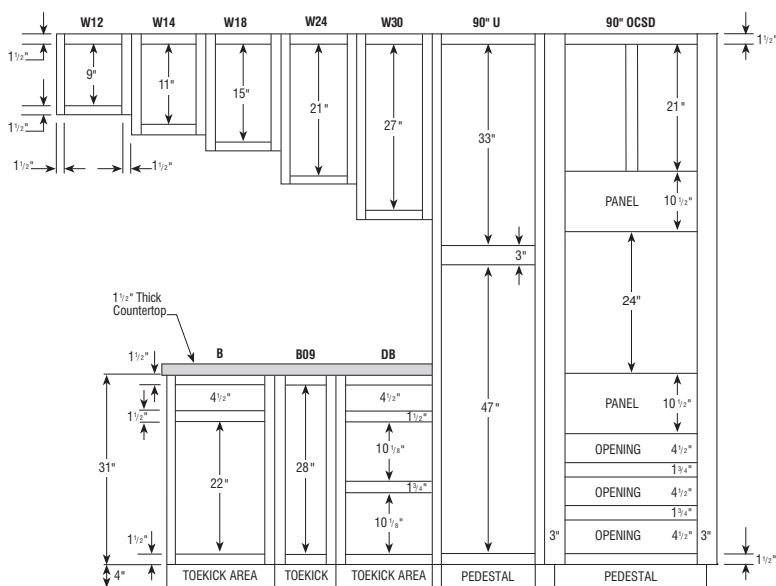
Full Overlay Door Styles:

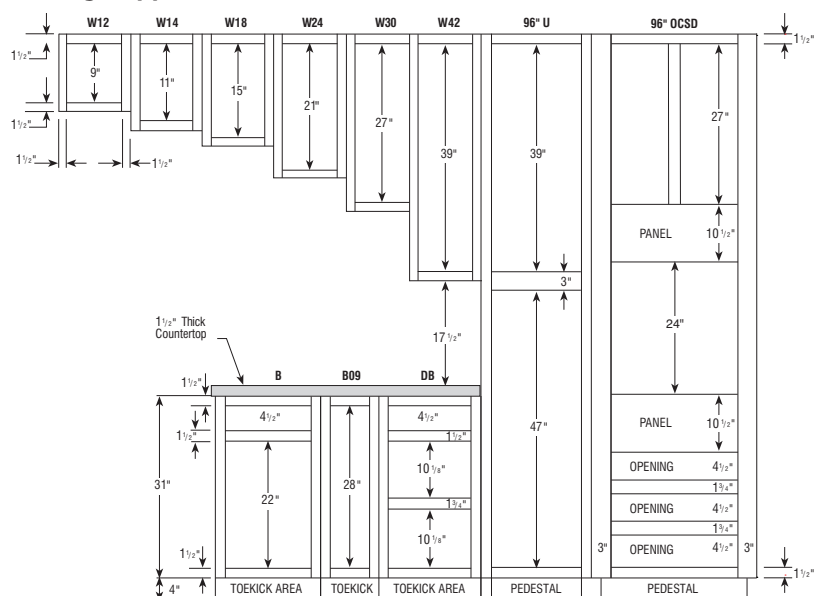
- ▶ ¼" Reveal around doors (¼" of Face Frame shows).
- ▶ Door size for Single Door Cabinets: Frame opening + 2½"
- ▶ Door size for Butt Door Cabinets: (Frame opening + 2⅜")/2
- ▶ 4½" High Drawer opening = 5¾" Drawer Front.

84" High Application

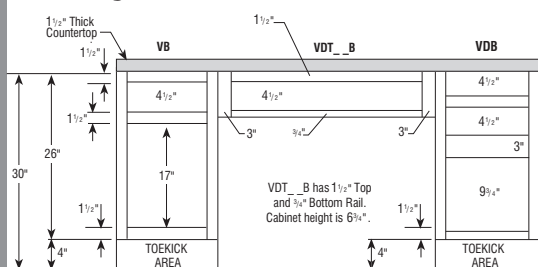


90" High Application

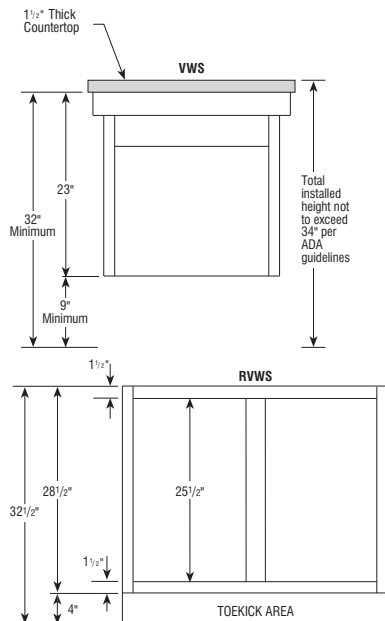
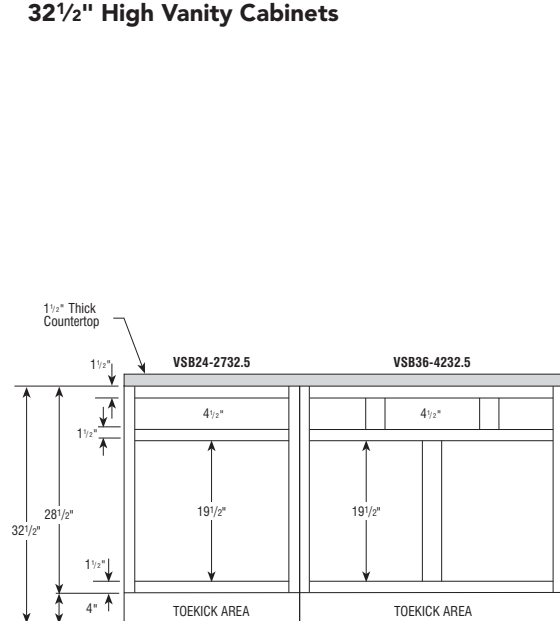




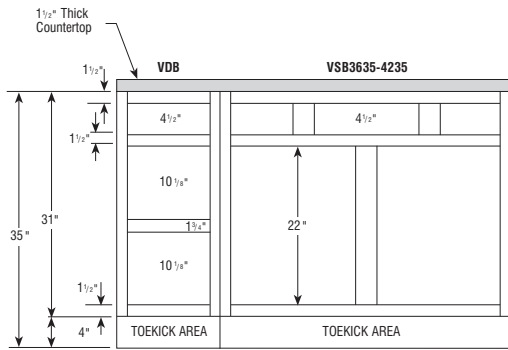
30" High Desk Cabinets



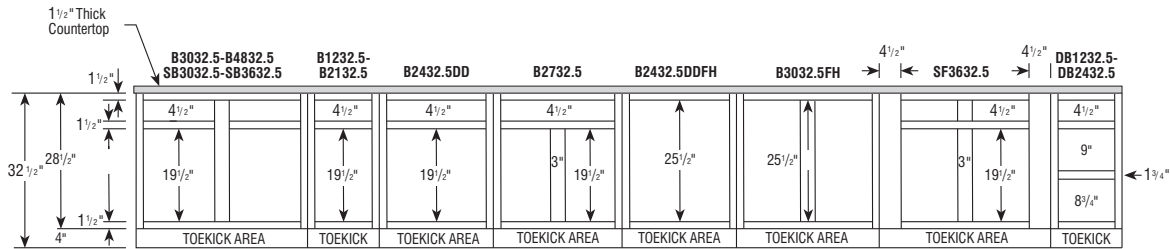
32½" High Vanity Cabinets



35" High Vanity Cabinets



32 1/2" High Base Cabinets (Universal Design Application)



- ▶ 32 1/2" High Cabinets are designed to comply with ADA (Americans with Disabilities Act) requirements of a 34" high overall counter height, including a 1 1/2" counter top.
- ▶ Refer to ADA guidelines for more details on designing in small spaces where extra width for turning radius may be required.
- ▶ For Vanity Sink Base Cabinets, see page 41. For a Vanity Wall Sink Cabinet, see page 42.

The following note applies to all Wall cabinets within this book.

- Wall cabinets with a single door may be flipped for a left or right hinge preference.

CUBES

STANDARD

ALL-PLYWOOD

Hammond Oak

Newberry Birch

Bartlett Thermofoil

Clarkson Birch

Albany Birch

Hammond Oak

Newberry Birch

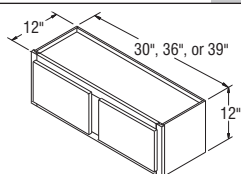
Bartlett Thermofoil

Clarkson Birch

Albany Birch

Wall Cabinets, 12" High, 12" Deep

W3012	3.2	169	187	226	234	281	238	256	295	303	350
W3612	3.9	176	196	240	248	295	245	265	309	317	364
W3912	4.2	177	198	248	250	300	246	267	317	319	369



W3012-W3912

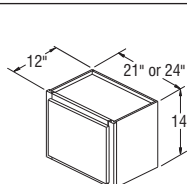
NOTES ✓

- Shelves not available.

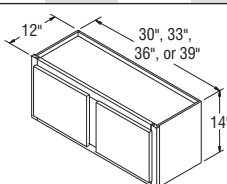
Wall Cabinets, 14" High, 12" Deep

W2114	2.7	154	173	210	216	259	223	242	279	285	328
W2414	3.1	160	177	216	222	267	229	246	285	291	336

W3014	3.7	169	187	226	234	281	238	256	295	303	350
W3314	4.1	171	189	234	235	282	240	258	303	304	351
W3614	4.4	176	196	240	248	295	245	265	309	317	364
W3914	4.8	177	198	248	250	300	246	267	317	319	369



W2114-W2414



W3014-W3914

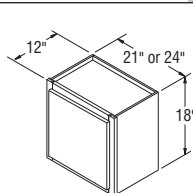
NOTES ✓

- Shelves not available.

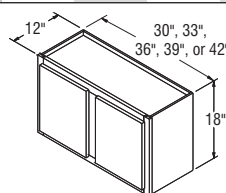
Wall Cabinets, 18" High, 12" Deep

W2118	3.4	151	169	227	211	252	220	238	296	280	321
W2418	3.8	156	174	234	217	261	225	243	303	286	330

W3018	4.7	187	210	250	262	314	256	279	319	331	383
W3318	5.1	196	218	264	273	327	265	287	333	342	396
W3618	5.6	200	221	267	276	331	269	290	336	345	400
W3918	6.1	204	224	271	278	333	273	293	340	347	402
W4218	6.5	209	229	277	287	346	278	298	346	356	415



W2118-W2418



W3018-W4218

NOTES ✓

- Shelves not available.

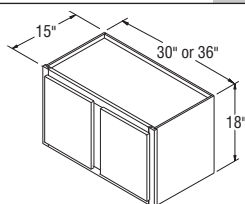
CUBES	STANDARD					ALL-PLYWOOD				
	Hammond Oak	Newberry Birch	Bartlett Thermofoil	Clarkson Birch	Albany Birch	Hammond Oak	Newberry Birch	Bartlett Thermofoil	Clarkson Birch	Albany Birch

Wall Cabinets, 18" High, 15" Deep

W301815	5.7	319	342	381	396	446	388	411	450	465	515
W361815	6.8	332	355	400	408	463	401	424	469	477	532

NOTES ✓

- Shelves not available.



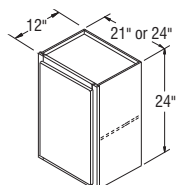
W301815-W361815

Wall Cabinets, 24" High, 12" Deep

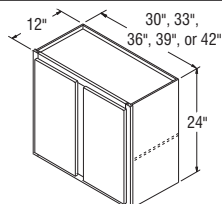
W2124	4.4	165	182	225	228	275	234	251	294	297	344
W2424	5.0	171	189	231	235	282	240	258	300	304	351

NOTES ✓

- Center shelf support clip included on Wall Double Door cabinets 27" wide and greater.
- One adjustable shelf.



W2124-W2424



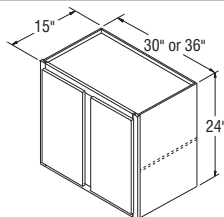
W3024-W4224

Wall Cabinets, 24" High, 15" Deep

W302415	7.5	355	374	421	431	484	424	443	490	500	553
W362415	9.0	365	386	438	445	504	434	455	507	514	573

NOTES ✓

- Center shelf support clip included on Wall Double Door cabinets 27" wide and greater.
- One adjustable shelf.



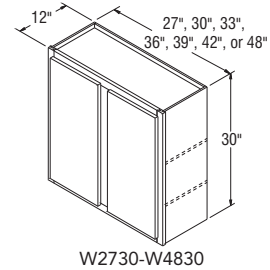
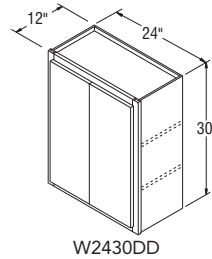
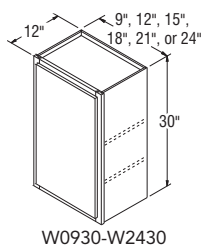
W302415-W362415

NOTES ✓

- Center shelf support clip included on Wall Double Door cabinets 27" wide and greater.
- Two adjustable shelves.
- W2430DD has butt doors on all door styles.

Wall Cabinets, 30" High, 12" Deep

	CUBES	STANDARD					ALL-PLYWOOD				
		Hammond Oak	Newberry Birch	Bartlett Thermofoil	Clarkson Birch	Albany Birch	Hammond Oak	Newberry Birch	Bartlett Thermofoil	Clarkson Birch	Albany Birch
W0930	2.5	136	150	179	189	226	205	219	248	258	295
W1230	3.2	154	173	207	216	259	223	242	276	285	328
W1530	3.9	160	178	212	224	270	229	247	281	293	339
W1830	4.7	171	189	234	235	282	240	258	303	304	351
W2130	5.4	177	198	248	250	300	246	267	317	319	369
W2430	6.2	194	216	266	271	325	263	285	335	340	394
W2430DD	6.2	210	232	281	287	341	279	301	350	356	410
W2730	6.9	231	258	310	324	386	300	327	379	393	455
W3030	7.6	241	270	327	336	403	310	339	396	405	472
W3330	8.4	249	274	336	343	410	318	343	405	412	479
W3630	9.1	272	302	366	376	452	341	371	435	445	521
W3930	9.9	276	308	369	384	462	345	377	438	453	531
W4230	10.6	284	319	385	400	480	353	388	454	469	549
W4830	12.1	311	345	419	432	518	380	414	488	501	587

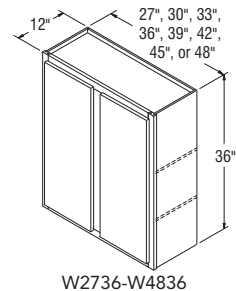
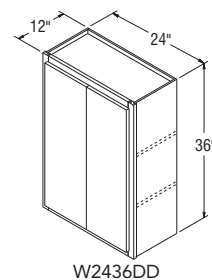
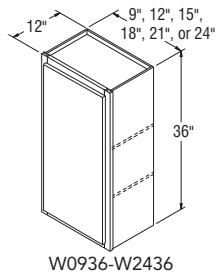


NOTES ✓

- Center shelf support clip included on Wall Double Door cabinets 27" wide and greater.
- Two adjustable shelves.
- W2436DD has butt doors on all door styles.

Wall Cabinets, 36" High, 12" Deep

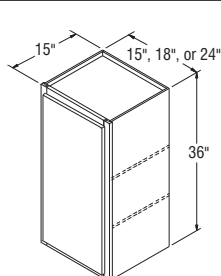
	CUBES	STANDARD					ALL-PLYWOOD				
		Hammond Oak	Newberry Birch	Bartlett Thermofoil	Clarkson Birch	Albany Birch	Hammond Oak	Newberry Birch	Bartlett Thermofoil	Clarkson Birch	Albany Birch
W0936	2.9	181	206	248	256	306	250	275	317	325	375
W1236	3.8	181	206	248	256	306	250	275	317	325	375
W1536	4.7	216	239	285	300	360	285	308	354	369	429
W1836	5.6	221	249	297	310	370	290	318	366	379	439
W2136	6.5	249	274	332	343	410	318	343	401	412	479
W2436	7.3	273	303	366	378	453	342	372	435	447	522
W2436DD	7.3	289	319	382	394	469	358	388	451	463	538
W2736	8.2	301	333	402	419	501	370	402	471	488	570
W3036	9.1	318	357	429	442	531	387	426	498	511	600
W3336	10.0	337	375	453	471	564	406	444	522	540	633
W3636	10.9	359	397	479	495	594	428	466	548	564	663
W3936	11.7	395	436	527	545	653	464	505	596	614	722
W4236	12.6	401	443	534	553	667	470	512	603	622	736
W4536	13.5	436	483	582	605	724	505	552	651	674	793
W4836	14.4	483	534	594	616	738	552	603	663	685	807



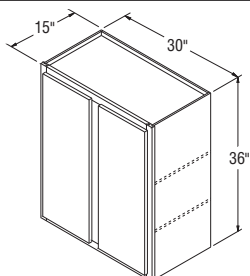
	CUBES	STANDARD					ALL-PLYWOOD				
		Hammond Oak	Newberry Birch	Bartlett Thermofoil	Clarkson Birch	Albany Birch	Hammond Oak	Newberry Birch	Bartlett Thermofoil	Clarkson Birch	Albany Birch
Wall Cabinets, 36" High, 15" Deep											
W153615	5.7	402	425	473	484	545	471	494	542	553	614
W183615	6.8	406	433	481	495	555	475	502	550	564	624
W243615	8.9	459	488	550	566	638	528	557	619	635	707
W303615	11.1	504	542	613	628	717	573	611	682	697	786

NOTES ✓

- Center shelf support clip included on Wall Double Door cabinets 27" wide and greater.
- Two adjustable shelves.



W153615-W243615



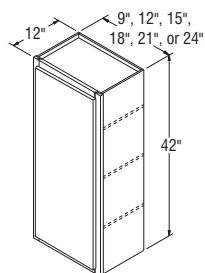
W303615

Wall Cabinets, 42" High, 12" Deep											
W0942	3.4	231	258	306	324	386	300	327	375	393	455
W1242	4.4	231	258	306	324	386	300	327	375	393	455
W1542	5.5	249	274	327	343	410	318	343	396	412	479
W1842	6.5	257	284	360	360	430	326	353	429	429	499
W2142	7.5	277	309	382	385	463	346	378	451	454	532
W2442	8.5	301	333	410	419	501	370	402	479	488	570

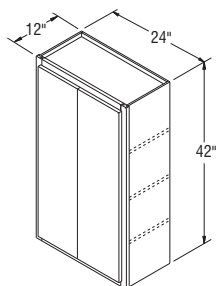
NOTES ✓

- Center shelf support clip included on Wall Double Door cabinets 27" wide and greater.
- Three adjustable shelves.
- W2442DD has butt doors on all door styles.

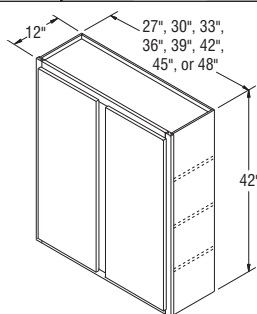
W2442DD	8.5	317	348	426	434	516	386	417	495	503	585
W2742	9.6	330	368	443	460	550	399	437	512	529	619
W3042	10.6	366	405	494	508	608	435	474	563	577	677
W3342	11.6	397	441	533	550	658	466	510	602	619	727
W3642	12.6	416	462	558	578	693	485	531	627	647	762
W3942	13.6	440	490	590	612	733	509	559	659	681	802
W4242	14.8	465	518	624	646	776	534	587	693	715	845
W4542	15.7	506	566	680	705	846	575	635	749	774	915
W4842	16.7	515	574	693	717	856	584	643	762	786	925



W0942-W2442



W2442DD



W2742-W4842

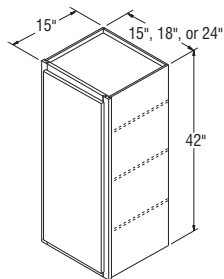
CUBES	STANDARD					ALL-PLYWOOD				
	Hammond Oak	Newberry Birch	Bartlett Thermofoil	Clarkson Birch	Albany Birch	Hammond Oak	Newberry Birch	Bartlett Thermofoil	Clarkson Birch	Albany Birch

NOTES ✓

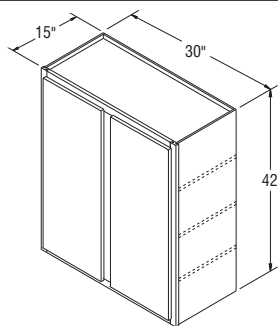
- Center shelf support clip included on Wall Double Door cabinets 27" wide and greater.
- Three adjustable shelves.

Wall Cabinets, 42" High, 15" Deep

W154215	6.6	460	486	538	553	623	529	555	607	622	692
W184215	7.9	470	497	572	572	641	539	566	641	641	710
W244215	10.4	513	546	623	632	713	582	615	692	701	782
W304215	12.9	578	618	706	719	820	647	687	775	788	889



W154215-W244215



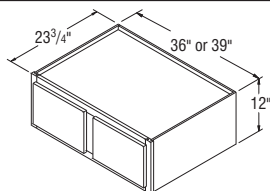
W304215

NOTES ✓

- Shelves not available.
- Cabinets must be supported on three surfaces when mounted.
- When designing for built-in refrigerators, be sure to use necessary Fillers to provide proper clearance.

Refrigerator Wall Cabinets, 12" High, 23 3/4" Deep

RW3612	7.2	203	225	273	280	333	272	294	342	349	402
RW3912	7.7	222	250	309	311	374	291	319	378	380	443



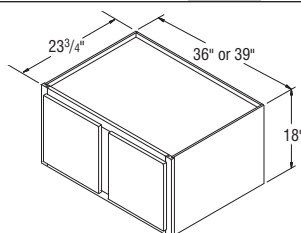
RW3612-RW3912

NOTES ✓

- Shelves not available.
- Cabinets must be supported on three surfaces when mounted.
- When designing for built-in refrigerators, be sure to use necessary Fillers to provide proper clearance.

Refrigerator Wall Cabinets, 18" High, 23 3/4" Deep

RW3618	10.4	251	276	303	315	376	320	345	372	384	445
RW3918	11.3	302	333	337	349	418	371	402	406	418	487



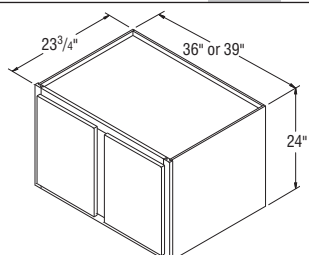
RW3618-RW3918

NOTES ✓

- Shelves not available.
- Cabinets must be supported on three surfaces when mounted.
- When designing for built-in refrigerators, be sure to use necessary Fillers to provide proper clearance. end of a run for ease of Moulding installation.

Refrigerator Wall Cabinets, 24" High, 23 3/4" Deep

RW3624	13.7	297	327	359	366	438	366	396	428	435	507
RW3924	14.8	302	333	363	374	448	371	402	432	443	517

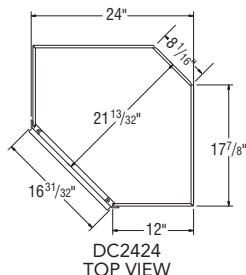
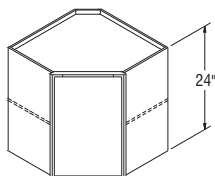


RW3624-RW3924

CUBES	STANDARD					ALL-PLYWOOD				
	Hammond Oak	Newberry Birch	Bartlett Thermofoil	Clarkson Birch	Albany Birch	Hammond Oak	Newberry Birch	Bartlett Thermofoil	Clarkson Birch	Albany Birch

Diagonal Corner Wall Cabinets, 24" High, 12" Deep

DC2424	8.5	229	257	339	320	384	298	326	408	389	453
---------------	------------	-----	-----	-----	-----	-----	-----	-----	-----	-----	-----

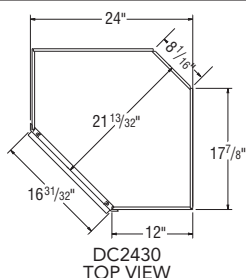
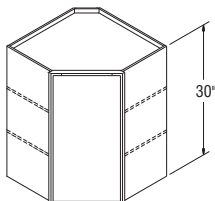


NOTES ✓

- One adjustable shelf.
- All Diagonal Wall Cabinets are reversible.
- When installing, DC cabinets must be attached to at least one run of cabinets and both back walls.
- All full overlay doors are smaller to allow for proper door opening.
- Adjustable shelf cannot be removed/retrofitted.

Diagonal Corner Wall Cabinets, 30" High, 12" Deep

DC2430	10.8	272	302	400	376	452	341	371	469	445	521
---------------	-------------	-----	-----	-----	-----	-----	-----	-----	-----	-----	-----

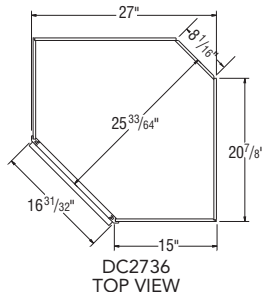
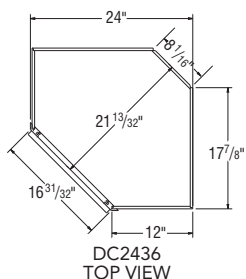
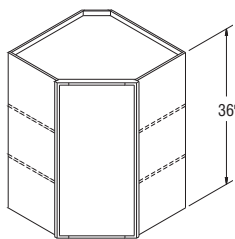


NOTES ✓

- Two adjustable shelves.
- All Diagonal Wall cabinets are reversible.
- When installing, DC cabinets must be attached to at least one run of cabinets and both back walls.
- All full overlay doors are smaller to allow for proper door opening.

Diagonal Corner Wall Cabinets, 36" High, 12" & 15" Deep

DC2436	12.9	335	373	451	468	561	404	442	520	537	630
DC2736	16.2	342	381	460	478	572	411	450	529	547	641

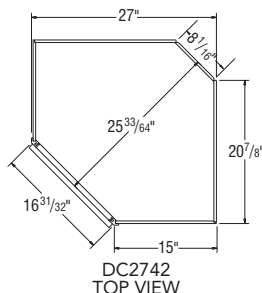
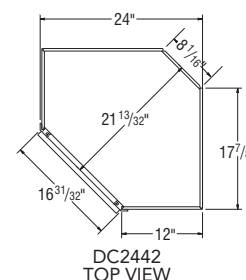
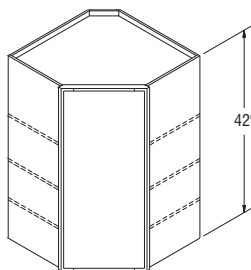


NOTES ✓

- Two adjustable shelves.
- All Diagonal Wall cabinets are reversible.
- When installing, DC cabinets must be attached to at least one run of cabinets and both back walls.
- All full overlay doors are smaller to allow for proper door opening.

Diagonal Corner Wall Cabinets, 42" High, 12" & 15" Deep

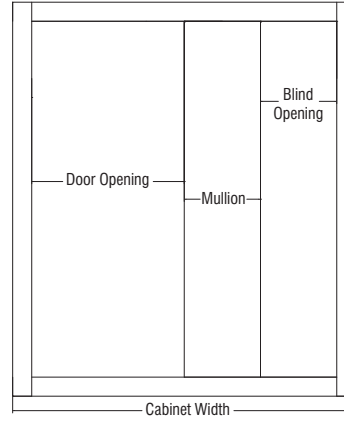
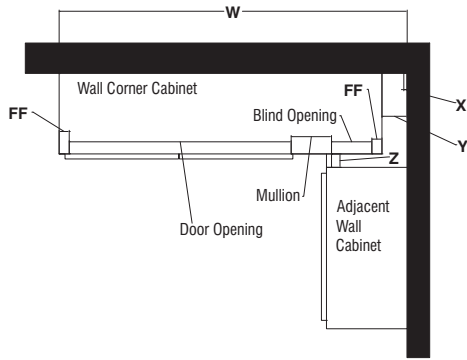
DC2442	14.9	396	440	582	549	657	465	509	651	618	726
DC2742	18.8	403	448	595	561	673	472	517	664	630	742



NOTES ✓

- Three adjustable shelves.
- All Diagonal Wall cabinets are reversible.
- When installing, DC cabinets must be attached to at least one run of cabinets and both back walls.
- All full overlay doors are smaller to allow for proper door opening.

Wall Corner Cabinet Installation Charts



Full Overlay Square Corner Wall Cabinet Information

Full Overlay Styles	Actual Cabinet Width	X		Y	Z		W	
		Min. Pull	Min. Pull w/Hardware	Max. Pull	Min. Filler Required	Min. Filler Required w/Hardware	Min. Pull From Wall To End of Cabinet	Max Pull From Wall To End of Cabinet
SC24_ _	24"	1"	2½"	3¾"	1"	2½"	25"	27¾"
SC30_ _	30"	1"	2½"	3¾"	1"	2½"	31"	33¾"
SC36_ _	36"	1"	2½"	3¾"	1"	2½"	37"	39¾"
SC42_ _	42"	1"	2½"	3¾"	1"	2½"	43"	45¾"
SC48_ _	48"	1"	2½"	3¾"	1"	2½"	49"	51¾"

7/16" Overlay Square Corner Wall Cabinet Information

7/16" Overlay Styles	Actual Cabinet Width	X		Y	Z		W	
		Min. Pull	Min. Pull w/Hardware	Max. Pull	Min. Filler Required	Min. Filler Required w/Hardware	Min. Pull From Wall To End of Cabinet	Max Pull From Wall To End of Cabinet
SC24_ _	24"	½"	2"	3¾"	½"	2"	24½"	27¾"
SC30_ _	30"	½"	2"	3¾"	½"	2"	30½"	33¾"
SC36_ _	36"	½"	2"	3¾"	½"	2"	36½"	39¾"
SC42_ _	42"	½"	2"	3¾"	½"	2"	42½"	45¾"
SC48_ _	48"	½"	2"	3¾"	½"	2"	48½"	51¾"

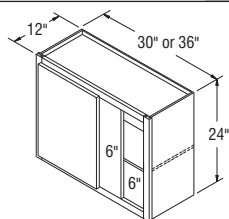
Square Corner Wall Door and Opening Sizes

SKU	7/16" Overlay Door	Full Overlay Door	Door Opening
SC3024	15⅞" x 21⅞"	17½" x 23½"	15" x 21"
SC3624	21⅞" x 21⅞"	23½" x 23½"	21" x 21"
SC2430	9⅞" x 27⅞"	11½" x 29½"	9" x 27"
SC3030	15⅞" x 27⅞"	17½" x 29½"	15" x 27"
SC3630	21⅞" x 27⅞"	23½" x 29½"	21" x 27"
SC4230	12⅞" x 27⅞"	14½" x 29½"	12" x 27"
SC4830	15⅞" x 27⅞"	17½" x 29½"	15" x 27"
SC2436	9⅞" x 33⅞"	11½" x 35½"	9" x 33"
SC3036	15" x 33"	17½" x 35½"	9" x 33"
SC3636	21" x 33"	23½" x 35½"	18" x 33"
SC2442	9⅞" x 39⅞"	11½" x 41½"	9" x 39"
SC3042	15⅞" x 39⅞"	17½" x 41½"	15" x 39"
SC3642	21⅞" x 39⅞"	23½" x 41½"	21" x 39"

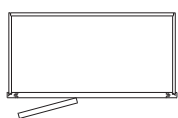
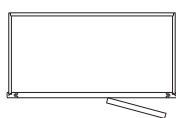
CUBES	STANDARD					ALL-PLYWOOD				
	Hammond Oak	Newberry Birch	Bartlett Thermofoil	Clarkson Birch	Albany Birch	Hammond Oak	Newberry Birch	Bartlett Thermofoil	Clarkson Birch	Albany Birch

Square Corner Wall Cabinets, 24" High, 12" Deep

SC3024	6.2	183	207	249	257	308	252	276	318	326	377
SC3624	7.4	196	219	264	275	330	265	288	333	344	399



SC3024-SC3624

TOP VIEW
SC (RIGHT)TOP VIEW
SC (LEFT)

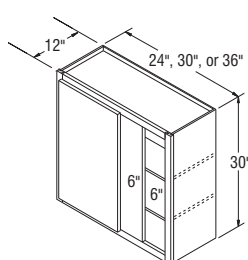
NOTES ✓

- One adjustable shelf.
- 3" Filler is included.
- Hinging determines location of the blind. Door attaches to blind panel.
- Cabinets are reversible.
- Cover panel shipped with cabinet for field installation to cover 6" blind opening.
- Reference Installation Charts for proper sizing identification, see page 20.

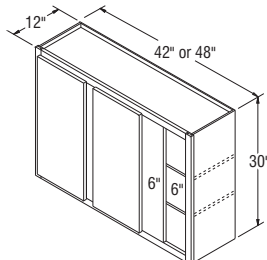
Square Corner Wall Cabinets, 30" High, 12" Deep

SC2430	6.2	177	198	248	250	300	246	267	317	319	369
SC3030	8.4	217	241	290	303	365	286	310	359	372	434
SC3630	9.1	231	258	310	324	386	300	327	379	393	455

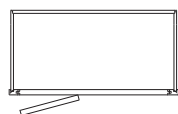
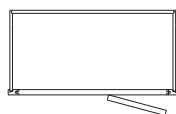
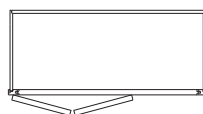
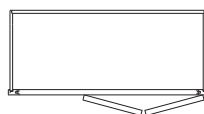
SC4230	10.6	255	282	342	357	426	324	351	411	426	495
SC4830	12.1	281	315	380	395	472	350	384	449	464	541



SC2430-SC3630



SC4230-SC4830

TOP VIEW
SC (RIGHT)TOP VIEW
SC (LEFT)TOP VIEW
SC (RIGHT)TOP VIEW
SC (LEFT)

NOTES ✓

- Two adjustable shelves.
- 3" Filler is included.
- Hinging determines location of the blind. Door attaches to blind panel.
- Cabinets are reversible.
- Cover panel shipped with cabinet for field installation to cover 6" blind opening.
- Reference Installation Charts for proper sizing identification, see page 20.

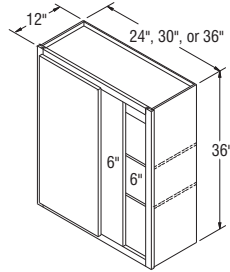
CUBES	STANDARD					ALL-PLYWOOD				
	Hammond Oak	Newberry Birch	Bartlett Thermofoil	Clarkson Birch	Albany Birch	Hammond Oak	Newberry Birch	Bartlett Thermofoil	Clarkson Birch	Albany Birch

NOTES ✓

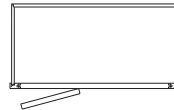
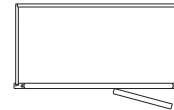
- Two adjustable shelves.
- 3" Filler is included.
- Hinging determines location of the blind. Door attaches to blind panel.
- Cabinets are reversible.
- Cover panel shipped with cabinet for field installation to cover 6" blind opening.
- Reference Installation Charts for proper sizing identification, see page 20.

Square Corner Wall Cabinets, 36" High, 12" Deep

SC2436	7.3	225	252	302	314	374	294	321	371	383	443
SC3036	9.1	275	306	367	381	455	344	375	436	450	524
SC3636	10.9	302	335	404	420	504	371	404	473	489	573



SC2436-SC3636

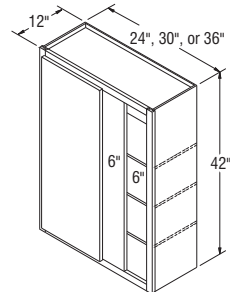
TOP VIEW
SC (RIGHT)TOP VIEW
SC (LEFT)

NOTES ✓

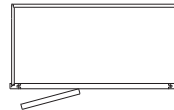
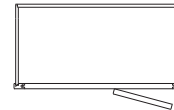
- Three adjustable shelves.
- 3" Filler is included.
- Hinging determines location of the blind. Door attaches to blind panel.
- Cabinets are reversible.
- Cover panel shipped with cabinet for field installation to cover 6" blind opening.
- Reference Installation Charts for proper sizing identification, see page 20.

Square Corner Wall Cabinets, 42" High, 12" Deep

SC2442	8.5	248	273	340	340	408	317	342	409	409	477
SC3042	10.6	314	348	420	436	524	383	417	489	505	593
SC3642	12.6	332	370	445	463	552	401	439	514	532	621



SC2442-SC3642

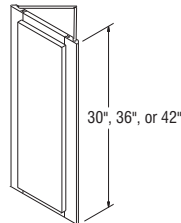
TOP VIEW
SC (RIGHT)TOP VIEW
SC (LEFT)

NOTES ✓

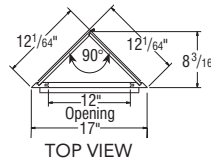
- 30" and 36" cabinets include two adjustable shelves; 42" high cabinets include three adjustable shelves.
- Cabinet backs will not match front.

Wall End Cabinets, Single Door, 30", 36", and 42" High, 12" Deep

WEC1230	3.2	234	257	305	312	363	303	326	374	381	432
WEC1236	3.8	291	320	380	387	451	360	389	449	456	520
WEC1242	4.4	356	391	465	474	553	425	460	534	543	622



WEC1230-WEC1242



TOP VIEW

CUBES	STANDARD					ALL-PLYWOOD				
	Hammond Oak	Newberry Birch	Bartlett Thermofoil	Clarkson Birch	Albany Birch	Hammond Oak	Newberry Birch	Bartlett Thermofoil	Clarkson Birch	Albany Birch

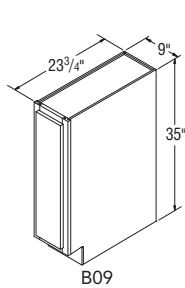
Base Cabinets, 35" High, 23 3/4" Deep

B09	5.5	194	216	266	271	325	323	345	395	400	454
B12	7.1	217	241	302	303	365	346	370	431	432	494
B15	8.7	232	259	311	325	387	361	388	440	454	516
B18	10.3	248	273	335	340	408	377	402	464	469	537
B21	11.7	255	282	342	357	426	384	411	471	486	555
B24	13.3	272	302	370	376	452	401	431	499	505	581

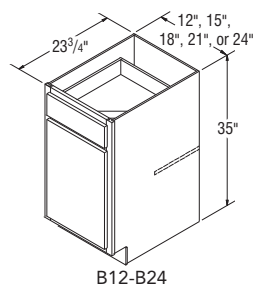
B24DD	13.3	288	318	386	391	468	417	447	515	520	597
B27	14.9	300	332	401	417	496	429	461	530	546	625
B30	16.5	328	367	447	459	549	457	496	576	588	678
B33	18.1	335	373	451	468	561	464	502	580	597	690
B36	19.6	351	393	476	488	586	480	522	605	617	715
B39	21.2	367	407	492	509	611	496	536	621	638	740
B42	22.8	382	427	515	533	639	511	556	644	662	768
B45	24.4	400	445	535	555	670	529	574	664	684	799
B48	26.0	404	451	548	564	675	533	580	677	693	804

NOTES ✓

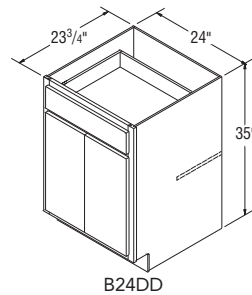
- B09 is a full height door and does not include an adjustable shelf or vertical partition.
- Includes one adjustable 3/4" thick, half depth shelf.
- B24DD has butt doors on all door styles.



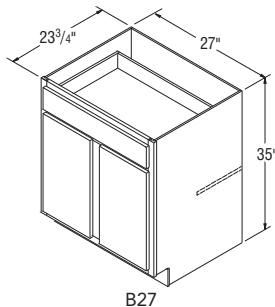
B09



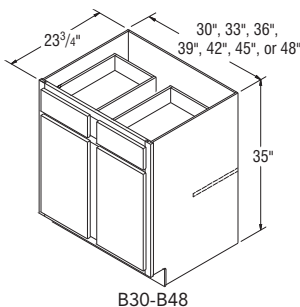
B12-B24



B24DD



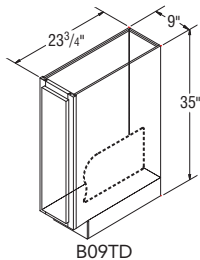
B27



B30-B48

Base Cabinets with Tray Divider, 35" High, 23 3/4" Deep

B09TD	5.5	200	222	274	278	335	329	351	403	407	464
--------------	------------	-----	-----	-----	-----	-----	-----	-----	-----	-----	-----



B09TD

NOTES ✓

- B09TD is a full height door and includes an installed chrome tray divider.

CUBES	STANDARD					ALL-PLYWOOD				
	Hammond Oak	Newberry Birch	Bartlett Thermofoil	Clarkson Birch	Albany Birch	Hammond Oak	Newberry Birch	Bartlett Thermofoil	Clarkson Birch	Albany Birch

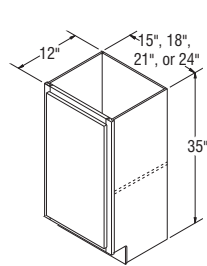
NOTES ✓

- Includes one 3/4" thick full depth adjustable shelf.

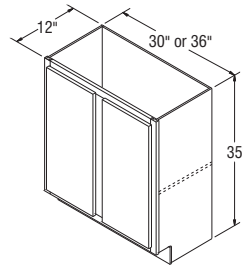
Base Cabinets with Full Height Doors, 35" High, 12" Deep

B15FH-12	4.7	217	241	290	302	361	346	370	419	431	490
B18FH-12	5.6	228	255	311	316	380	357	384	440	445	509
B21FH-12	6.5	236	264	318	330	397	365	393	447	459	526
B24FH-12	7.4	253	280	345	351	420	382	409	474	480	549

B30FH-12	9.1	319	358	417	427	511	448	487	546	556	640
B36FH-12	10.9	340	378	442	454	546	469	507	571	583	675



B15FH-12-B24FH-12



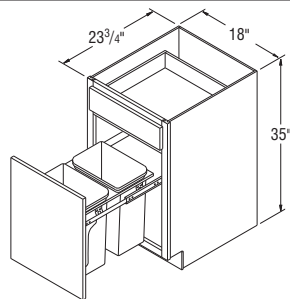
B30FH-12-B36FH-12

NOTES ✓

- BWB18 has two 35-quart Pull-out wastebaskets on Full extension guides.
- Beige wastebasket support.

Base Wastebaskets, 35" High, 23 3/4" Deep

BWB18	10.3	532	560	621	626	697	661	689	750	755	826
--------------	-------------	-----	-----	-----	-----	-----	-----	-----	-----	-----	-----



BWB18

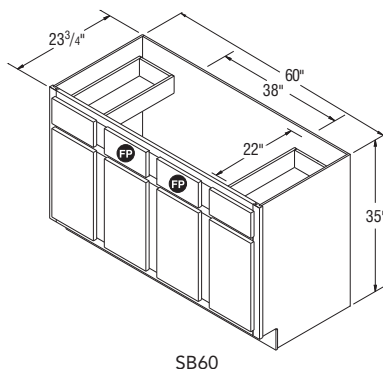
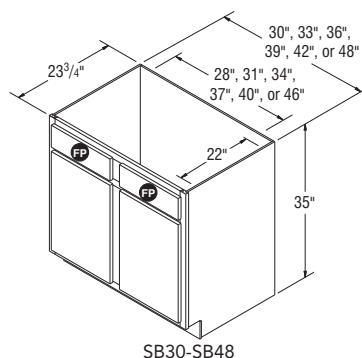
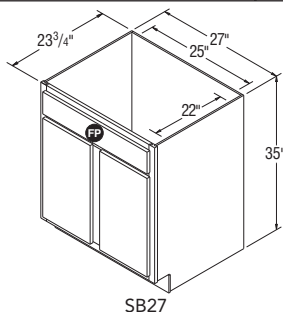
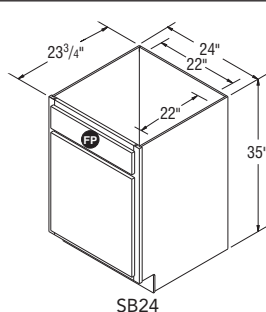
CUBES	STANDARD					ALL-PLYWOOD				
	Hammond Oak	Newberry Birch	Bartlett Thermofoil	Clarkson Birch	Albany Birch	Hammond Oak	Newberry Birch	Bartlett Thermofoil	Clarkson Birch	Albany Birch

Sink/Range Bases, 35" High, 23 3/4" Deep

SB24	13.3	272	302	366	376	452	401	431	495	505	581
SB27	14.9	272	309	373	385	463	401	438	502	514	592
SB30	16.5	281	315	381	395	472	410	444	510	524	601
SB33	18.1	294	325	390	405	487	423	454	519	534	616
SB36	19.6	302	335	407	420	504	431	464	536	549	633
SB39	21.2	319	358	430	445	533	448	487	559	574	662
SB42	22.8	320	359	433	446	534	449	488	562	575	663
SB48	26.0	397	442	537	552	667	526	571	666	681	796
SB60	32.3	549	612	746	765	919	678	741	875	894	1048

NOTES ✓

- FP = False Panel.
- It may be necessary to modify the corner braces/stretcher rails with some sink applications.
- Shelf not included; interiors will include shelf clip holes on all Sink Bases.
- Front-Onlys are not available in Sink Bases.

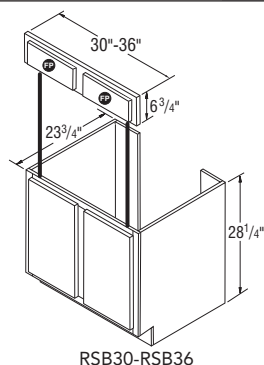


Removable Sink Bases with Front Panel, 35" High, 23 3/4" Deep

RSB30	16.5	355	395	478	493	590	484	524	607	622	719
RSB36	19.7	376	420	509	526	631	505	549	638	655	760

NOTES ✓

- Top false panel section attaches to adjacent cabinets, while bottom section and floor are removable for accessibility.



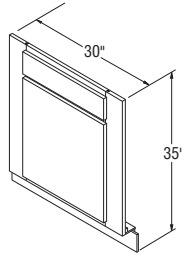
CUBES	STANDARD					ALL-PLYWOOD				
	Hammond Oak	Newberry Birch	Bartlett Thermofoil	Clarkson Birch	Albany Birch	Hammond Oak	Newberry Birch	Bartlett Thermofoil	Clarkson Birch	Albany Birch

NOTES ✓

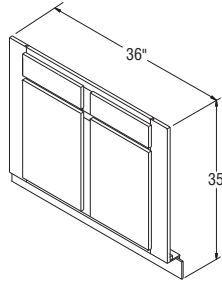
- Sink Base floor included with all units.
- Trimable 3" each side on partial overlay styles. Not trimmable on full overlay styles.
- SF30 single door only available in partial overlay styles.

Sink/Range Fronts, 35" High

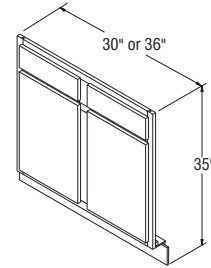
SF30	2.3	207	226	276	282	340	336	355	405	411	469
SF36	2.8	219	247	295	306	367	348	376	424	435	496



SF30
PARTIAL OVERLAY



SF36
PARTIAL OVERLAY



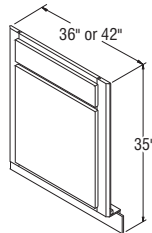
SF30-SF36
FULL OVERLAY

NOTES ✓

- Sink Base floor included with all units.
- Toekick is not attached, ships loose.
- For sufficient dishwasher door clearance and loading/unloading space, a 15" wide base cabinet is recommended for use between sink base diagonal corner cabinet and dishwasher.
- Floor dimensions:
SFC36 – $\frac{3}{8}$ " x 36" x 36".
SFC42 – $\frac{3}{8}$ " x 42" x 42".

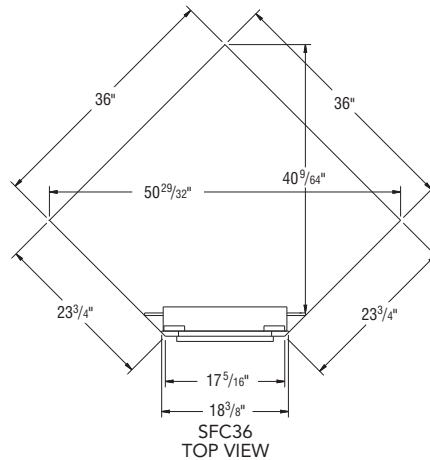
Sink Front Corners, 35" High

SFC36	2.9	167	185	221	231	277	296	314	350	360	406
SFC42	3.9	232	259	285	302	362	361	388	414	431	491

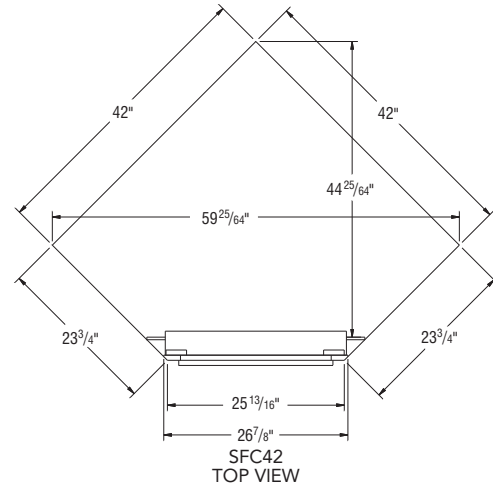


SFC36-SFC42

	Wall Width	Max. Sink Width
SFC36	36" x 36"	25 $\frac{3}{4}$ "
SFC42	42" x 42"	34 $\frac{1}{4}$ "



SFC36
TOP VIEW

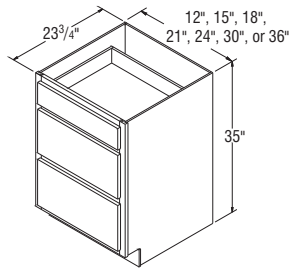


SFC42
TOP VIEW

CUBES	STANDARD					ALL-PLYWOOD				
	Hammond Oak	Newberry Birch	Bartlett Thermofoil	Clarkson Birch	Albany Birch	Hammond Oak	Newberry Birch	Bartlett Thermofoil	Clarkson Birch	Albany Birch

Three Drawer Bases, 35" High, 23 3/4" Deep

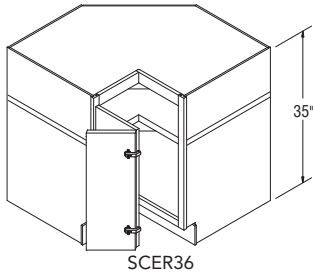
DB12	7.1	290	324	308	324	386	419	453	437	453	515
DB15	8.7	306	339	324	339	407	435	468	453	468	536
DB18	10.3	324	361	342	361	431	453	490	471	490	560
DB21	11.7	363	403	382	403	483	492	532	511	532	612
DB24	13.3	363	403	382	403	483	492	532	511	532	612
DB30	16.5	623	695	657	695	832	752	824	786	824	961
DB36	19.6	698	775	736	775	929	827	904	865	904	1058



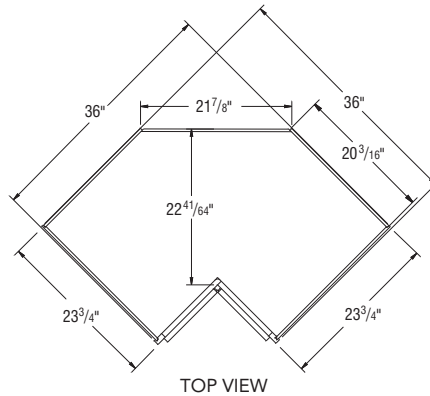
DB12-DB36

Square Corner Easy Reach Cabinet, 35" High, 23 3/4" Deep

SCER36	29.1	567	628	730	785	942	696	757	859	914	1071
---------------	-------------	-----	-----	-----	-----	-----	-----	-----	-----	-----	------



SCER36



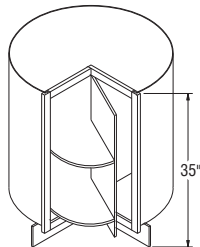
TOP VIEW

NOTES ✓

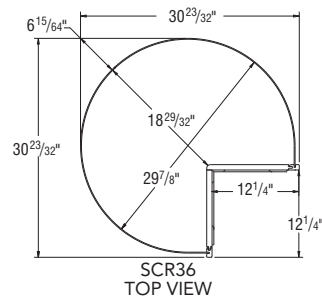
- One knuckle hinge door.
- Includes magnetic catch.
- Shelf is not adjustable.
- Decorative hardware must be countersunk to prevent scratching of adjacent cabinets and face frame of SCER.

Square Corner Rotos, 35" High

SCR36	20.4	524	581	676	725	871	653	710	805	854	1000
--------------	-------------	-----	-----	-----	-----	-----	-----	-----	-----	-----	------



SCR36

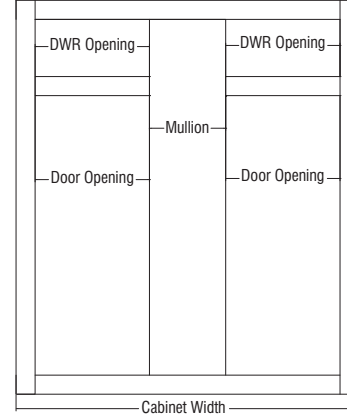
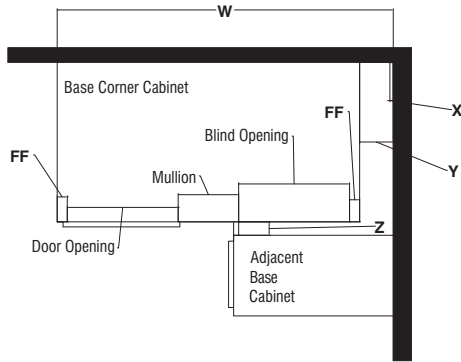


SCR36
TOP VIEW

NOTES ✓

- One rotating door.
- Two rotating white shelves.
- Nominal gap of 1/4" on all sides of door.
- SCR36 has 27" diameter shelf and holds 60 lbs. per shelf.
- When ordering All-plywood construction, top and bottom will utilize plywood, but drum material does not change.
- For stability, install SCR cabinets between base cabinets.

Base Corner Cabinet Installation Charts



Full Overlay Base Corner Cabinet Information

Full Overlay Styles	Actual Cabinet Width	X		Y	Z		W	
		Min. Pull	Min. Pull w/Hardware	Max. Pull	Min. Filler Required	Min. Filler Required w/Hardware	Min. Pull From Wall To End of Cabinet	Max Pull From Wall To End of Cabinet
BC36	27"	9 ³ / ₄ "	11 ¹ / ₄ "	12 ¹ / ₂ "	1"	2 ¹ / ₂ "	36 ³ / ₄ "	39 ¹ / ₂ "
BC42	36"	3 ³ / ₄ "	5 ¹ / ₄ "	9 ¹ / ₂ "	1"	2 ¹ / ₂ "	39 ³ / ₄ "	45 ¹ / ₂ "
BC48	45"	0"	3 ³ / ₄ "	5"	1"	2 ¹ / ₂ "	45"	50"
BC51	48"	0"	0"	3 ¹ / ₂ "	1"	2 ¹ / ₂ "	48"	51 ¹ / ₂ "

7/16" Overlay Base Corner Cabinet Information

7/16" Overlay Styles	Actual Cabinet Width	X		Y	Z		W	
		Min. Pull	Min. Pull w/Hardware	Max. Pull	Min. Filler Required	Min. Filler Required w/Hardware	Min. Pull From Wall To End of Cabinet	Max Pull From Wall To End of Cabinet
BC36	27"	9 ¹ / ₄ "	10 ³ / ₄ "	12 ¹ / ₂ "	1 ¹ / ₂ "	2"	36 ¹ / ₄ "	39 ¹ / ₂ "
BC42	36"	3 ¹ / ₄ "	4 ³ / ₄ "	9 ¹ / ₂ "	1 ¹ / ₂ "	2"	39 ¹ / ₄ "	45 ¹ / ₂ "
BC48	45"	0"	1 ¹ / ₄ "	5"	1 ¹ / ₂ "	2"	45"	50"
BC51	48"	0"	0"	3 ¹ / ₂ "	1 ¹ / ₂ "	2"	48"	51 ¹ / ₂ "

Base Corner Door, Drawer Front, and Opening Sizes

SKU	7/16" Overlay Door	7/16" Overlay Drawer Front	Full Overlay Door	Full Overlay Door Drawer Front	Door Opening	Drawer Opening
BC36	9 ⁷ / ₈ " x 22 ⁷ / ₈ "	9 ⁷ / ₈ " x 5 ¹ / ₈ "	11 ¹ / ₂ " x 24 ¹ / ₈ "	11 ¹ / ₂ " x 5 ³ / ₄ "	9" x 22"	9" x 4 ¹ / ₂ "
BC42	12 ⁷ / ₈ " x 22 ⁷ / ₈ "	12 ⁷ / ₈ " x 5 ¹ / ₈ "	14 ¹ / ₂ " x 24 ¹ / ₈ "	14 ¹ / ₂ " x 5 ³ / ₄ "	12" x 22"	12" x 4 ¹ / ₂ "
BC48	17 ³ / ₈ " x 22 ⁷ / ₈ "	17 ³ / ₈ " x 5 ¹ / ₈ "	19" x 24 ¹ / ₈ "	19" x 5 ³ / ₄ "	16 ¹ / ₂ " x 22"	16 ¹ / ₂ " x 4 ¹ / ₂ "
BC51	18 ⁷ / ₈ " x 22 ⁷ / ₈ "	18 ⁷ / ₈ " x 5 ¹ / ₈ "	20 ¹ / ₂ " x 24 ¹ / ₈ "	20 ¹ / ₂ " x 5 ³ / ₄ "	18" x 22"	18" x 4 ¹ / ₂ "

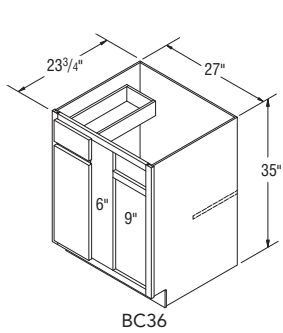
CUBES	STANDARD					ALL-PLYWOOD				
	Hammond Oak	Newberry Birch	Bartlett Thermofoil	Clarkson Birch	Albany Birch	Hammond Oak	Newberry Birch	Bartlett Thermofoil	Clarkson Birch	Albany Birch

Base Corner Cabinets, 35" High, 23 3/4" Deep

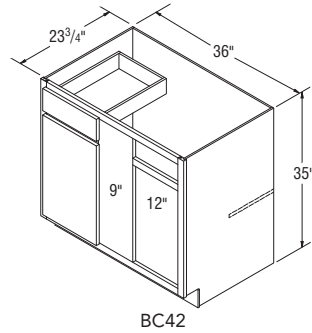
BC36	15.1	297	328	400	414	496	426	457	529	543	625
BC42	20.0	311	345	419	432	518	440	474	548	561	647
BC48	24.8	330	368	452	460	550	459	497	581	589	679
BC51	26.4	336	375	460	467	557	465	504	589	596	686

NOTES ✓

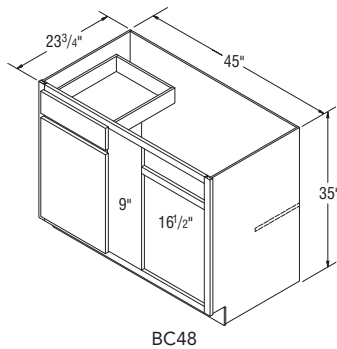
- Includes one adjustable 3/4" thick, half depth shelf.
- All Base Corner cabinets are reversible from left blind to right blind.
- 3" Filler is included with all Base Corner cabinets and shipped under Toekick or in cabinet.
- To ensure proper door/drawer clearance, we recommend you do not install appliances next to the blind.
- One door and one drawer.
- Cabinets are designed to use same amount of wall space designated in the sku nomenclature.
- Cover panel shipped with cabinet for field installation to cover blind opening.
- Reference Installation Charts for proper size and identification. See page 28.



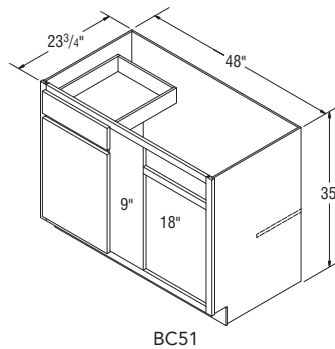
BC36



BC42



BC48



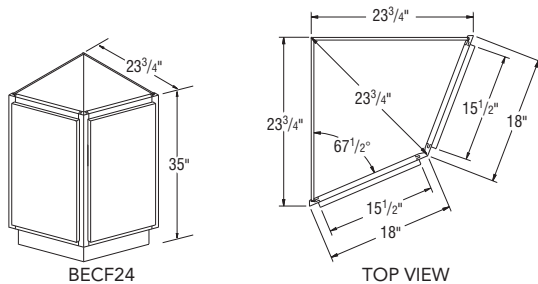
BC51

Base End Cabinet, 35" High, 23 3/4" Deep

BECF24	13.3	338	372	440	446	522	467	501	569	575	651
---------------	-------------	-----	-----	-----	-----	-----	-----	-----	-----	-----	-----

NOTES ✓

- Two doors.
- Includes 1/2" thick fixed shelf.
- Not designed for stand alone island applications.
- Standard Construction features non-matching sides.
- APC sides are unfinished.



BECF24

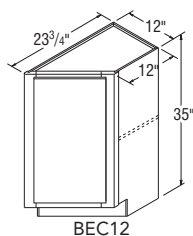
TOP VIEW

Base End Cabinet, 35" High, 12" Wide, 23 3/4" Deep

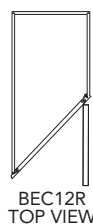
BEC12 *	7.1	321	354	419	425	497	450	483	548	554	626
----------------	------------	-----	-----	-----	-----	-----	-----	-----	-----	-----	-----

NOTES ✓

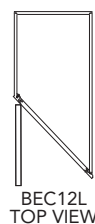
- Includes one 12" deep 3/4" thick adjustable shelf.
- 23 3/4" side is unfinished in APC only.



BEC12



BEC12R
TOP VIEW



BEC12L
TOP VIEW

*L or R designation specifies 12" deep side and door hinging.

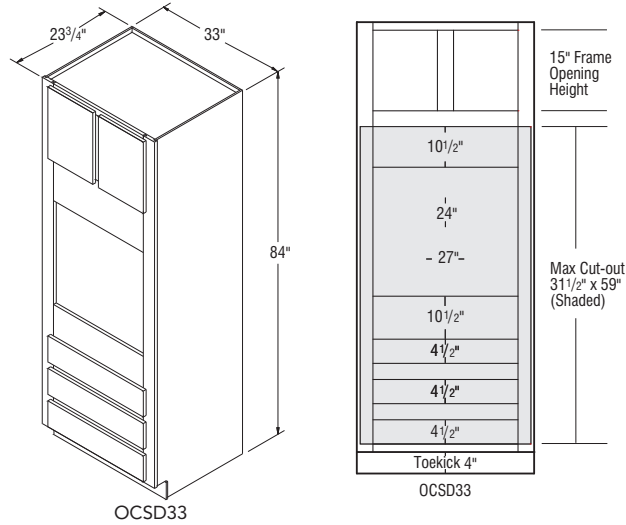
CUBES	STANDARD					ALL-PLYWOOD				
	Hammond Oak	Newberry Birch	Bartlett Thermofoil	Clarkson Birch	Albany Birch	Hammond Oak	Newberry Birch	Bartlett Thermofoil	Clarkson Birch	Albany Birch

NOTES ✓

- Two doors and three drawers.
- Oven shelf support kit included.
- Shelves not available on this cabinet.
- Back of cabinet scored for easy back removal if needed when oven used is deeper than cabinet can accommodate.
- Cabinet features concealed face mount hinges.

Oven Cabinets, 84" High, 23 3/4" Deep

OCSD33	42.0	839	932	1147	1163	1398	1095	1188	1403	1419	1654
--------	------	-----	-----	------	------	------	------	------	------	------	------



OCSD33

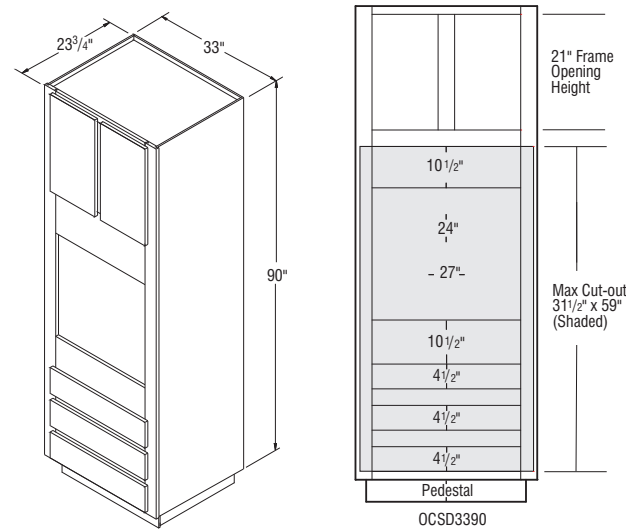
OCSD33

NOTES ✓

- Two doors and three drawers.
- Oven shelf support kit included.
- All 90" cabinets are shipped as an 86" cabinet with unfinished Loose Toekick Sub Assembly unattached.
- Additional material may be needed to cover unfinished Loose Toekick Sub Assembly.
- Shelves not available on this cabinet.
- Refer to Loose Toekick Sub Assembly Installation instructions for cabinet installation.
- Back of cabinet scored for easy back removal if needed when oven used is deeper than cabinet can accommodate.
- Cabinet features concealed face mount hinges.

Oven Cabinets, 90" High, 23 3/4" Deep

OCSD3390	47.1	995	1107	1327	1383	1659	1251	1363	1583	1639	1915
----------	------	-----	------	------	------	------	------	------	------	------	------



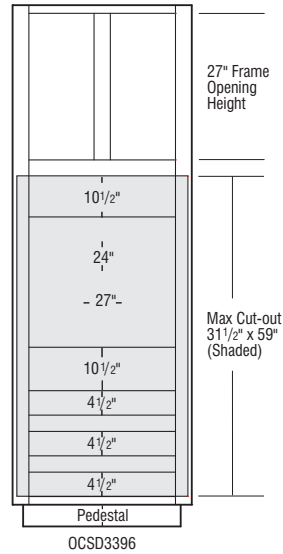
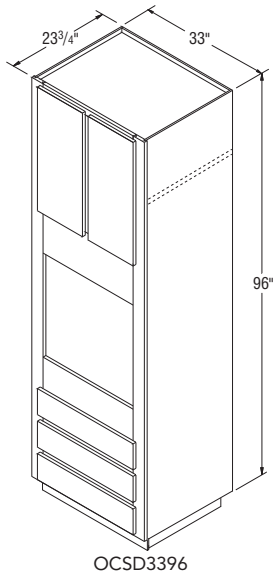
OCSD3390

OCSD3390

CUBES	STANDARD					ALL-PLYWOOD				
	Hammond Oak	Newberry Birch	Bartlett Thermofoil	Clarkson Birch	Albany Birch	Hammond Oak	Newberry Birch	Bartlett Thermofoil	Clarkson Birch	Albany Birch

Oven Cabinets, 96" High, 23 3/4" Deep

OCSD3396	50.1	1126	1254	1502	1567	1877	1382	1510	1758	1823	2133
----------	------	------	------	------	------	------	------	------	------	------	------



NOTES ✓

- Two doors, one adjustable shelf, and three drawers.
- Oven shelf support kit included.
- All 96" cabinets are shipped as a 92" cabinet with unfinished Loose Toekick Sub Assembly unattached.
- Additional material may be needed to cover unfinished Loose Toekick Sub Assembly.
- Refer to Loose Toekick Sub Assembly Installation instructions for cabinet installation.
- Back of cabinet scored for easy back removal if needed when oven used is deeper than cabinet can accommodate.
- Cabinet features concealed face mount hinges.

Utility Cabinets, 84" High, 12" and 23 3/4" Deep

U1812 *	12.5	490	546	666	641	769	746	802	922	897	1025
---------	------	-----	-----	-----	-----	-----	-----	-----	-----	-----	------

*Specify L or R on all single door Utility Cabinets.

U15 *	19.7	453	508	661	637	765	709	764	917	893	1021
-------	------	-----	-----	-----	-----	-----	-----	-----	-----	-----	------

U18 *	23.4	489	545	665	640	768	745	801	921	896	1024
-------	------	-----	-----	-----	-----	-----	-----	-----	-----	-----	------

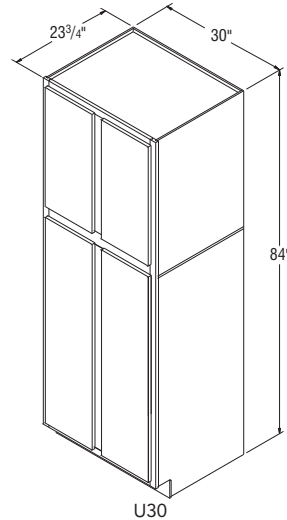
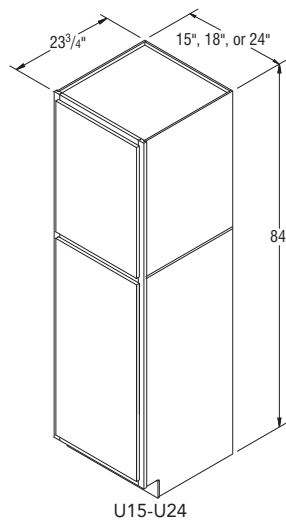
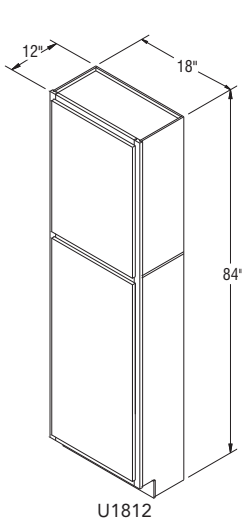
U24 *	30.9	554	617	809	778	935	810	873	1065	1034	1191
-------	------	-----	-----	-----	-----	-----	-----	-----	------	------	------

*Specify L or R on all single door Utility Cabinets.

U30	38.3	773	857	1114	1074	1288	1029	1113	1370	1330	1544
-----	------	-----	-----	------	------	------	------	------	------	------	------

NOTES ✓

- 84" high Utility cabinets include one fixed shelf between doors.
- Shelves not included in Utility cabinets. For shelf and Roll Tray options see pages 49-50.
- Refer to the Cabinet Specifications Section for door opening dimensions.



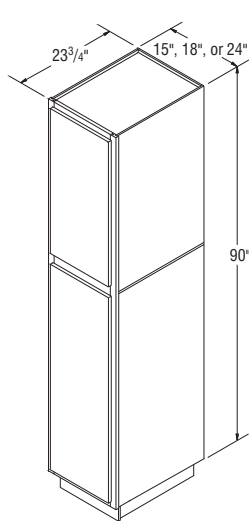
CUBES	STANDARD					ALL-PLYWOOD				
	Hammond Oak	Newberry Birch	Bartlett Thermofoil	Clarkson Birch	Albany Birch	Hammond Oak	Newberry Birch	Bartlett Thermofoil	Clarkson Birch	Albany Birch

NOTES ✓

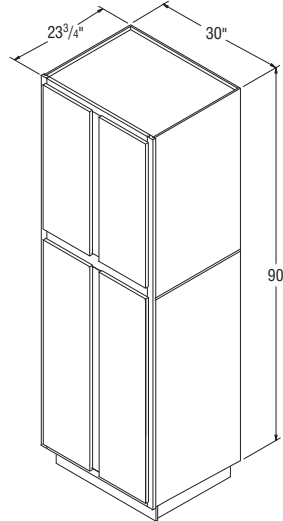
- 90" high Utility cabinets include one fixed shelf between doors.
- Shelves not included in Utility cabinets. For shelf and Roll Tray options see pages 49-50.
- All 90" high Utility cabinets are shipped as an 86" cabinet with unfinished Loose Toekick Sub Assembly.
- Additional material may be needed to cover unfinished Loose Toekick Sub Assembly.
- Refer to the Cabinet Specifications Section for door opening dimensions.
- Refer to Loose Toekick Sub Assembly Installation instructions for cabinet installation.

Utility Cabinets, 90" High, 23 3/4" Deep

U1590 *	21.4	558	621	756	784	942	814	877	1012	1040	1198
U1890 *	25.4	563	624	759	787	946	819	880	1015	1043	1202
U2490 *	33.4	682	762	995	957	1153	938	1018	1251	1213	1409
*Specify L or R on all single door Utility Cabinets.											
U3090	43.0	928	1031	1215	1170	1402	1184	1287	1471	1426	1658



U1590-U2490



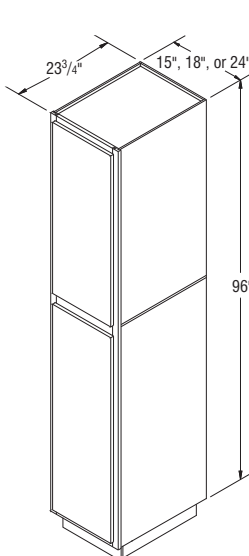
U3090

NOTES ✓

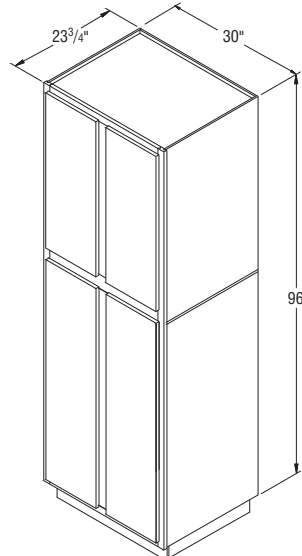
- 96" high Utility cabinets include one fixed shelf between doors.
- Shelves not included in Utility cabinets. For shelf and Roll Tray options see pages 49-50.
- All 96" Utility cabinets are shipped as a 92" cabinet with unfinished Loose Toekick Sub Assembly.
- Additional material may be needed to cover unfinished Loose Toekick Sub Assembly.
- Refer to the Cabinet Specifications Section for door opening dimensions.
- Refer to Loose Toekick Sub Assembly Installation instructions for cabinet installation.

Utility Cabinets, 96" High, 23 3/4" Deep

U1596 *	22.8	632	704	920	885	1063	888	960	1176	1141	1319
U1896 *	27.0	635	707	924	888	1066	891	963	1180	1144	1322
U2496 *	35.6	768	856	1117	1076	1291	1024	1112	1373	1332	1547
*Specify L or R on all single door Utility Cabinets.											
U3096	45.8	1011	1123	1326	1276	1529	1267	1379	1582	1532	1785



U1596-U2496



U3096

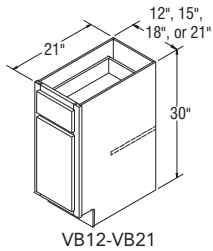
CUBES	STANDARD					ALL-PLYWOOD				
	Hammond Oak	Newberry Birch	Bartlett Thermofoil	Clarkson Birch	Albany Birch	Hammond Oak	Newberry Birch	Bartlett Thermofoil	Clarkson Birch	Albany Birch

Vanity Bases, 30" High, 21" Deep

VB12	5.4	204	224	257	278	333	333	353	386	407	462
VB15	6.6	216	239	276	300	360	345	368	405	429	489
VB18	7.8	232	257	300	324	387	361	386	429	453	516
VB21	9.3	245	271	315	339	406	374	400	444	468	535

NOTES ✓

- Include one ¾" thick half depth adjustable shelf.



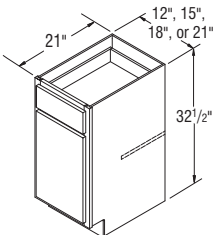
VB12-VB21

Vanity Bases, 32 1/2" High, 21" Deep

VB1232.5	5.7	214	235	270	292	349	343	364	399	421	478
VB1532.5	7.1	227	251	290	315	378	356	380	419	444	507
VB1832.5	8.4	243	270	315	340	406	372	399	444	469	535
VB2132.5	9.7	257	284	331	356	426	386	413	460	485	555

NOTES ✓

- Includes one adjustable ¾" thick half depth shelf.



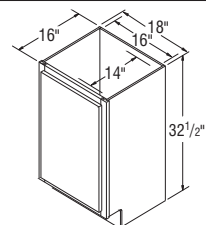
VB1232.5-VB2132.5

Vanity Sink Base, 32 1/2" High, 18" Wide, 16" Deep

VSB1832.516	6.5	217	239	266	299	360	346	368	395	428	489
--------------------	------------	-----	-----	-----	-----	-----	-----	-----	-----	-----	-----

NOTES ✓

- It may be necessary to modify the corner braces/stretcher rails with some sink applications.
- 16" wide and 14" deep space for sink opening.
- One full height door.
- Vanity interiors are not drilled for shelf clip holes, nor do they include a shelf.
- 16" deep Vanities available in Standard Construction only.



VSB1832.516

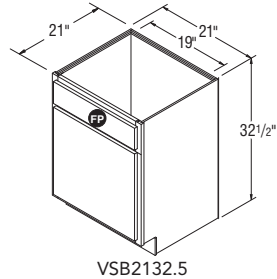
CUBES	STANDARD					ALL-PLYWOOD				
	Hammond Oak	Newberry Birch	Bartlett Thermofoil	Clarkson Birch	Albany Birch	Hammond Oak	Newberry Birch	Bartlett Thermofoil	Clarkson Birch	Albany Birch

NOTES ✓

- FP = False Panel.
- It may be necessary to modify the corner braces/stretcher rails with some sink applications.
- Vanity interiors are not drilled for shelf clip holes, nor do they include a shelf.

Vanity Sink Bases, 32 1/2" High, 21" Deep

VSB2132.5	9.7	243	275	315	327	399	372	404	444	456	528
-----------	-----	-----	-----	-----	-----	-----	-----	-----	-----	-----	-----



NOTES ✓

- FP = False Panel.
- It may be necessary to modify the corner braces/stretcher rails with some sink applications.
- VSB2435 has butt doors on all door styles.
- Vanity interiors are not drilled for shelf clip holes, nor do they include a shelf.

Vanity Sink Bases, 35" High, 21" Deep

VSB2135	10.5	275	306	346	359	430	404	435	475	488	559
---------	------	-----	-----	-----	-----	-----	-----	-----	-----	-----	-----

VSB2435	11.9	290	324	366	376	452	419	453	495	505	581
---------	------	-----	-----	-----	-----	-----	-----	-----	-----	-----	-----

VSB2735	13.3	290	330	373	385	463	419	459	502	514	592
---------	------	-----	-----	-----	-----	-----	-----	-----	-----	-----	-----

VSB3035	14.7	302	337	381	395	472	431	466	510	524	601
---------	------	-----	-----	-----	-----	-----	-----	-----	-----	-----	-----

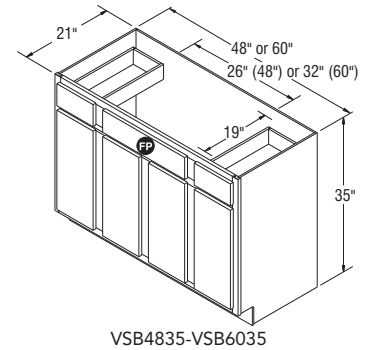
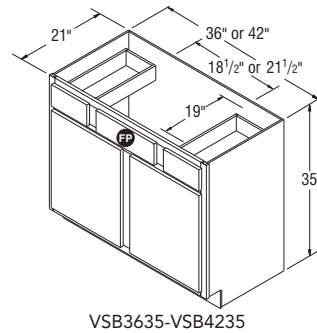
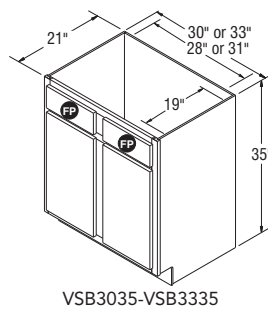
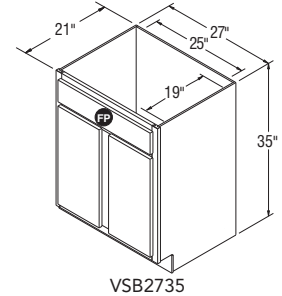
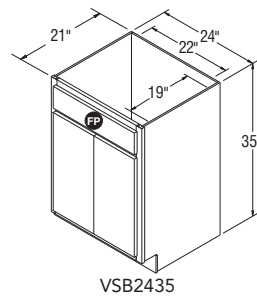
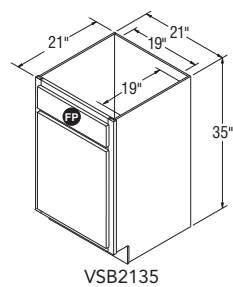
VSB3335	16.1	311	347	390	405	487	440	476	519	534	616
---------	------	-----	-----	-----	-----	-----	-----	-----	-----	-----	-----

VSB3635	17.5	420	465	553	581	697	549	594	682	710	826
---------	------	-----	-----	-----	-----	-----	-----	-----	-----	-----	-----

VSB4235	20.3	447	499	601	624	748	576	628	730	753	877
---------	------	-----	-----	-----	-----	-----	-----	-----	-----	-----	-----

VSB4835	23.2	527	542	657	676	809	656	671	786	805	938
---------	------	-----	-----	-----	-----	-----	-----	-----	-----	-----	-----

VSB6035	28.3	632	703	855	882	1052	761	832	984	1011	1181
---------	------	-----	-----	-----	-----	------	-----	-----	-----	------	------



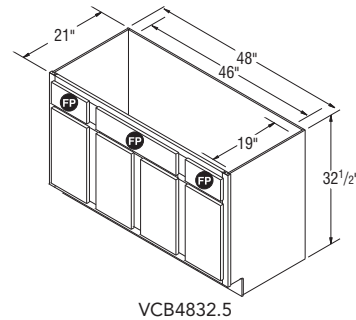
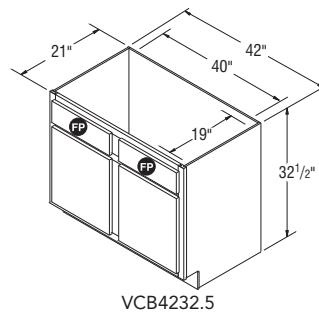
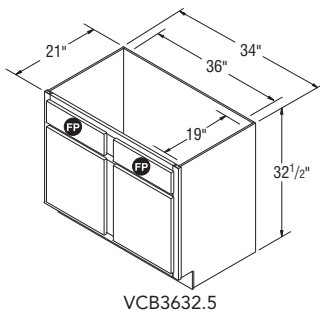
CUBES	STANDARD					ALL-PLYWOOD				
	Hammond Oak	Newberry Birch	Bartlett Thermofoil	Clarkson Birch	Albany Birch	Hammond Oak	Newberry Birch	Bartlett Thermofoil	Clarkson Birch	Albany Birch

Vanity Console Bases, 32 1/2" High, 21" Deep

VCB3632.5	16.3	336	368	427	448	523	465	497	556	577	652
VCB4232.5	18.9	362	400	468	485	566	491	529	597	614	695
VCB4832.5	21.6	439	450	529	544	633	568	579	658	673	762

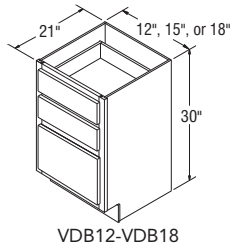
NOTES ✓

- FP = False Panel.
- It may be necessary to modify the corner braces/stretcher rails with some sink applications.
- Vanity interiors are not drilled for shelf clip holes, nor do they include a shelf.



Vanity Three Drawer Bases, 30" High, 21" Deep

VDB12	5.4	306	339	324	339	407	435	468	453	468	536
VDB15	6.6	306	339	324	339	407	435	468	453	468	536
VDB18	7.8	320	359	339	359	429	449	488	468	488	558

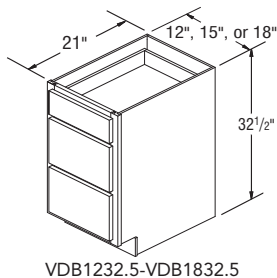


Vanity Three Drawer Bases, 32 1/2" High, 21" Deep

VDB1232.5	5.7	322	356	340	356	427	451	485	469	485	556
VDB1532.5	7.1	327	363	347	363	436	456	492	476	492	565
VDB1832.5	8.4	352	390	370	390	461	481	519	499	519	590

NOTES ✓

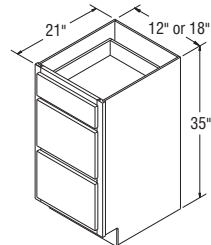
- Raised panel styles - drawer fronts will convert to raised panel;
Full overlay - 10 1/4" or higher
Partial overlay - 9 7/8" or higher



CUBES	STANDARD					ALL-PLYWOOD				
	Hammond Oak	Newberry Birch	Bartlett Thermofoil	Clarkson Birch	Albany Birch	Hammond Oak	Newberry Birch	Bartlett Thermofoil	Clarkson Birch	Albany Birch

Vanity Three Drawer Bases, 35" High, 21" Deep

VDB1235	6.2	290	324	308	324	386	419	453	437	453	515
VDB1835	6.7	324	361	342	361	431	453	490	471	490	560



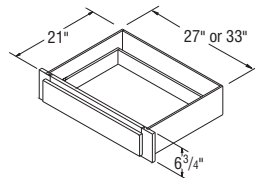
VDB1235-VDB1835

NOTES ✓

- Cabinets may not feature matching exterior laminate, so installation between two adjacent cabinets, walls, and/or panels is recommended.
- Face frame trimmable 3" overall, 1½" on each side.
- VDT unit not constructed of All-plywood.

Vanity Drawers Trimmable, 21" Deep (Trimmable 3")

VDT30B	3.2	166	183	175	183	221	295	312	304	312	350
VDT36B	3.8	208	229	218	229	276	337	358	347	358	405



VDT30B
VDT36B

CUBES	STANDARD					ALL-PLYWOOD				
	Hammond Oak	Newberry Birch	Bartlett Thermofoil	Clarkson Birch	Albany Birch	Hammond Oak	Newberry Birch	Bartlett Thermofoil	Clarkson Birch	Albany Birch

32½" high cabinets are designed to comply with ADA (Americans with Disabilities Act) requirements of a 34" high overall counter height, including a 1½" countertop.

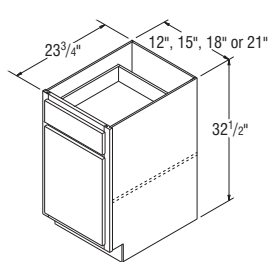
Base Cabinets, 32 ½" High, 23 ¾" Deep

B1232.5	6.3	308	342	429	429	512	437	471	558	558	641
B1532.5	8.0	332	368	441	460	552	461	497	570	589	681
B1832.5	9.4	347	386	474	483	578	476	515	603	612	707
B2132.5	10.9	359	402	486	504	605	488	531	615	633	734

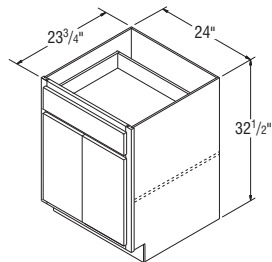
B2432.5DD	12.4	385	429	526	534	642	514	558	655	663	771
B2732.5	13.8	424	471	569	590	707	553	600	698	719	836
B3032.5	15.3	467	520	636	650	779	596	649	765	779	908
B3332.5	16.8	474	529	638	662	792	603	658	767	791	921
B3632.5	18.3	500	554	675	693	831	629	683	804	822	960
B4832.5	24.2	573	638	778	798	958	702	767	907	927	1087

NOTES ✓

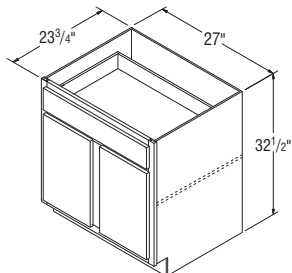
- Includes one ¾" thick full depth adjustable shelf.



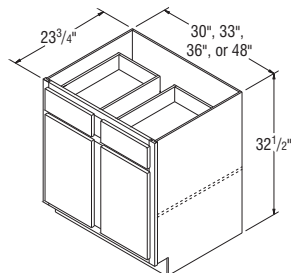
B1232.5-B2132.5



B2432.5DD



B2732.5



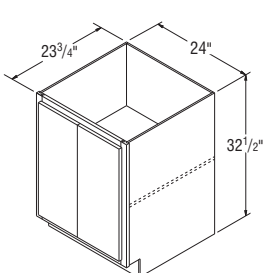
B3032.5-B4832.5

Base Cabinets with Full Height Doors, 32 ½" High, 23 ¾" Deep

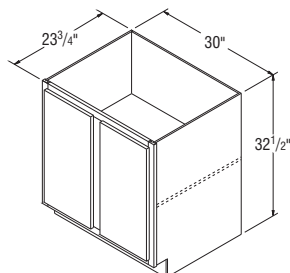
B2432.5DDFH	13.3	367	405	501	508	608	496	534	630	637	737
B3032.5FH	15.3	443	495	606	619	743	572	624	735	748	872

NOTES ✓

- Includes one ¾" thick full depth adjustable shelf.



B2432.5DDFH



B3032.5FH

32½" high cabinets are designed to comply with ADA (Americans with Disabilities Act) requirements of a 34" high overall counter height, including a 1½" countertop.

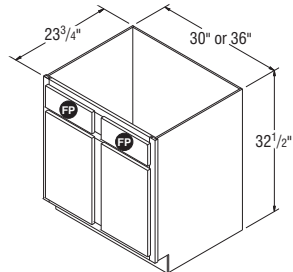
CUBES	STANDARD					ALL-PLYWOOD				
	Hammond Oak	Newberry Birch	Bartlett Thermofoil	Clarkson Birch	Albany Birch	Hammond Oak	Newberry Birch	Bartlett Thermofoil	Clarkson Birch	Albany Birch

NOTES ✓

- FP = False Panel.
- It may be necessary to modify the corner braces with some sink applications.
- Vanity interiors are not drilled for shelf clip holes, nor do they include a shelf.

Sink Base Cabinets, 32 ½" High, 23 ¾" Deep

SB3032.5	15.3	401	446	542	557	670	530	575	671	686	799
SB3632.5	18.3	429	474	576	594	709	558	603	705	723	838



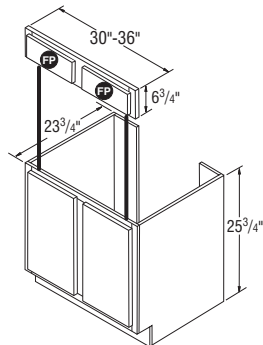
SB3032.5-SB3632.5

NOTES ✓

- Top false panel section attaches to adjacent cabinets, while bottom section and floor are removable for accessibility.

Removable Sink Bases with Front Panel, 32 ½" High, 23 ¾" Deep

RSB3032.5	16.5	501	557	676	698	835	630	686	805	827	964
RSB3632.5	19.7	534	594	722	742	890	663	723	851	871	1019



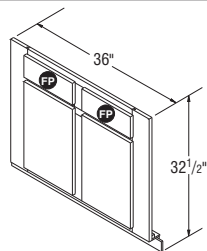
RSB3032.5-RSB3632.5

NOTES ✓

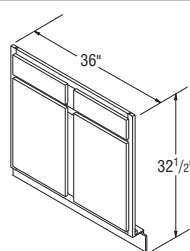
- FP = False Panel.
- Base Floor included with all units.
- Trimmable 3" each side on Partial overlay; not trimmable on Full overlay.

Sink Fronts, 32 ½" High

SF3632.5	2.8	312	346	417	434	518	441	475	546	563	647
-----------------	------------	-----	-----	-----	-----	-----	-----	-----	-----	-----	-----



SF3632.5
PARTIAL OVERLAY



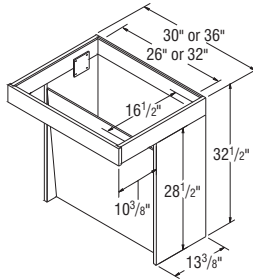
SF3632.5
FULL OVERLAY

CUBES	STANDARD					ALL-PLYWOOD				
	Hammond Oak	Newberry Birch	Bartlett Thermofoil	Clarkson Birch	Albany Birch	Hammond Oak	Newberry Birch	Bartlett Thermofoil	Clarkson Birch	Albany Birch

32 1/2" high cabinets are designed to comply with ADA (Americans with Disabilities Act) requirements of a 34" high overall counter height, including a 1 1/2" countertop.

Sink Unit Cabinets with Front Panel, 32 1/2" High

SU3032.5	3.8	431	479	585	479	574	431	479	585	479	574
SU3632.5	4.6	459	510	620	510	612	459	510	620	510	612



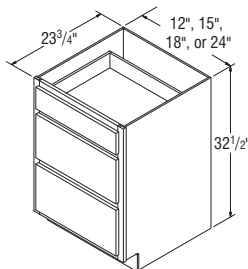
SU3032.5-SU3632.5

NOTES ✓

- 26" and 32" wide and 16 1/2" deep space for sink opening.
- Shipped unassembled.
- Removable front panel.
- Do not use or install as a freestanding unit.
- It may be necessary to modify the corner braces with some sink applications.
- Front panel does not include a door style profile.
- Not available in All-plywood Construction.

Three Drawer Base Cabinets, 32 1/2" High, 23 3/4" Deep

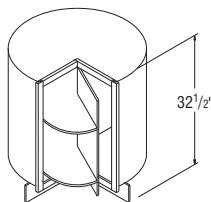
DB1232.5	6.3	409	457	436	457	550	538	586	565	586	679
DB1532.5	8.0	434	482	457	482	576	563	611	586	611	705
DB1832.5	9.4	457	510	486	510	612	586	639	615	639	741
DB2432.5	12.4	512	572	545	572	684	641	701	674	701	813



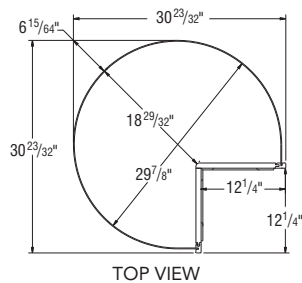
DB1232.5-DB2432.5

Square Corner Roto Base Cabinet, 32 1/2" High

SCR3632.5	18.4	742	824	958	1032	1234	871	953	1087	1161	1363
------------------	-------------	-----	-----	-----	------	------	-----	-----	------	------	------



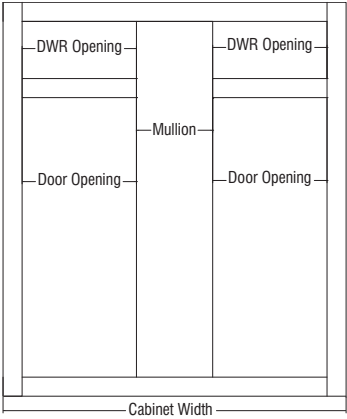
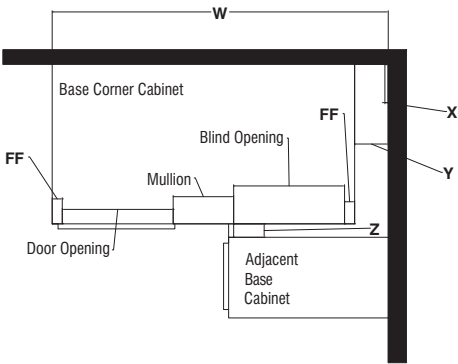
SCR3632.5



NOTES ✓

- Two rotating 27" diameter white shelves with a 60 lb. load capacity per shelf.
- One rotating door.
- Nominal gap of 1/4" on all sides of door.
- When ordering All-plywood Construction, top and bottom will utilize particleboard, but drum material does not change.

Universal Base Corner Cabinet Installation Charts



Full Overlay Universal Base Corner Cabinet Information

Full Overlay Styles	Actual Cabinet Width	X		Y	Z		W	
		Min. Pull	Min. Pull w/Hardware	Max. Pull	Min. Filler Required	Min. Filler Required w/Hardware	Min. Pull From Wall To End of Cabinet	Max Pull From Wall To End of Cabinet
BC3632.5	27"	9 ³ / ₄ "	11 ¹ / ₄ "	12 ¹ / ₂ "	1"	2 ¹ / ₂ "	36 ³ / ₄ "	39 ¹ / ₂ "
BC4232.5	36"	3 ³ / ₄ "	5 ¹ / ₄ "	9 ¹ / ₂ "	1"	2 ¹ / ₂ "	39 ³ / ₄ "	45 ¹ / ₂ "
BC4832.5	45"	0"	3 ³ / ₄ "	5"	1"	2 ¹ / ₂ "	45"	50"

7/16" Overlay Universal Base Corner Cabinet Information

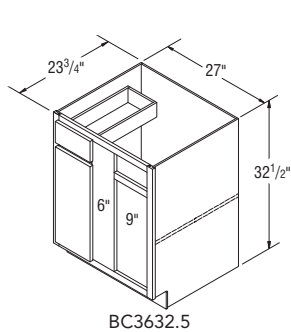
7/16" Overlay Styles	Actual Cabinet Width	X		Y	Z		W	
		Min. Pull	Min. Pull w/Hardware	Max. Pull	Min. Filler Required	Min. Filler Required w/Hardware	Min. Pull From Wall To End of Cabinet	Max Pull From Wall To End of Cabinet
BC3632.5	27"	9 ¹ / ₄ "	10 ³ / ₄ "	12 ¹ / ₂ "	1 ¹ / ₂ "	2"	36 ¹ / ₄ "	39 ¹ / ₂ "
BC4232.5	36"	3 ¹ / ₄ "	4 ³ / ₄ "	9 ¹ / ₂ "	1 ¹ / ₂ "	2"	39 ¹ / ₄ "	45 ¹ / ₂ "
BC4832.5	45"	0"	1 ¹ / ₄ "	5"	1 ¹ / ₂ "	2"	45"	50"

CUBES	STANDARD					ALL-PLYWOOD				
	Hammond Oak	Newberry Birch	Bartlett Thermofoil	Clarkson Birch	Albany Birch	Hammond Oak	Newberry Birch	Bartlett Thermofoil	Clarkson Birch	Albany Birch

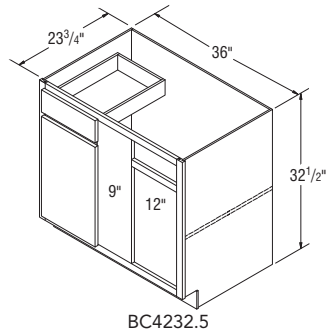
32 1/2" high cabinets are designed to comply with ADA (Americans with Disabilities Act) requirements of a 34" high overall counter height, including a 1 1/2" countertop.

Base Corner Cabinets, 32 1/2" High, 23 3/4" Deep

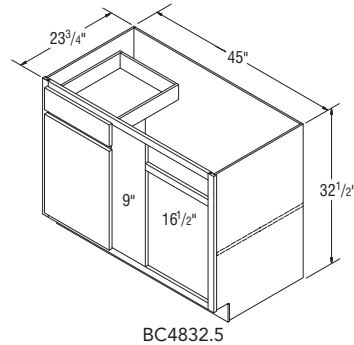
BC3632.5	14.1	419	468	567	586	703	548	597	696	715	832
BC4232.5	18.3	441	472	571	588	705	570	601	700	717	834
BC4832.5	22.7	464	530	649	662	794	593	659	778	791	923



BC3632.5



BC4232.5



BC4832.5

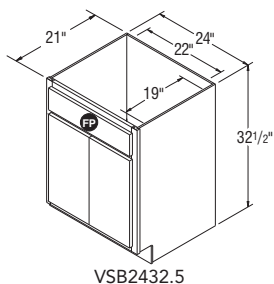
NOTES

- Includes one 3/4" thick full depth adjustable shelf.
- All Base Corner Cabinets are reversible from left blind to right blind.
- 3" filler is included with all Base Corner Cabinets and shipped unattached.
- To ensure proper door/drawer clearance we recommend you do not install appliances next to the blind.
- Adjoining run of cabinets will cover blind opening.
- One door and one drawer installed on each Base Corner Cabinet.
- Base Corner Cabinets are designed to use same amount of wall space designated in the SKU nomenclature, and may be pulled up to maximum amount on chart to accommodate odd dimensions in a kitchen.
- For minimum and maximum pull dimensions, refer to allowable minimum and maximum pull dimensions provided.

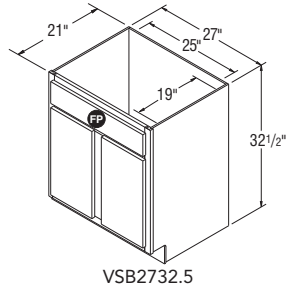
Vanity Sink Bases, 32 1/2" High, 21" Deep

VSB2432.5	11.0	275	306	346	359	430	404	435	475	488	559
VSB2732.5	12.4	284	318	360	369	443	413	447	489	498	572
VSB3032.5	13.7	287	321	363	373	448	416	450	492	502	577
VSB3332.5	15.0	297	331	370	385	463	426	460	499	514	592
VSB3632.5	16.3	399	442	527	552	661	528	571	656	681	790
VSB4232.5	18.9	425	473	571	595	711	554	602	700	724	840

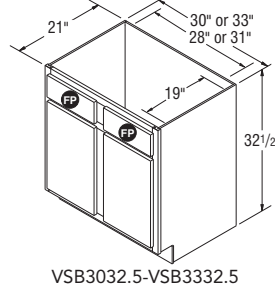
VSB4832.5	21.6	500	513	624	642	769	629	642	753	771	898
VSB6032.5	26.8	600	669	812	835	1001	729	798	941	964	1130



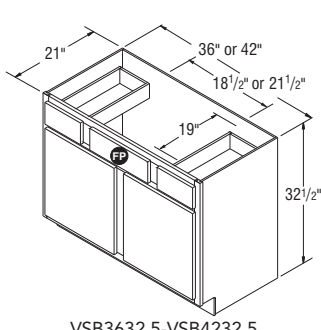
VSB2432.5



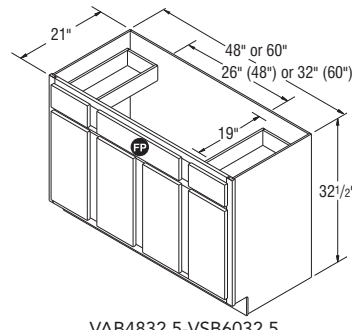
VSB2732.5



VSB3032.5-VSB3332.5



VSB3632.5-VSB4232.5



VSB4832.5-VSB6032.5

NOTES

- FP = False Panel
- It may be necessary to modify the corner braces in some sink applications.
- VSB2432.5 has butt doors on all door styles.
- Vanity interiors are not drilled for shelf clip holes, nor do they include a shelf.

32½" high cabinets are designed to comply with ADA (Americans with Disabilities Act) requirements of a 34" high overall counter height, including a 1½" countertop.

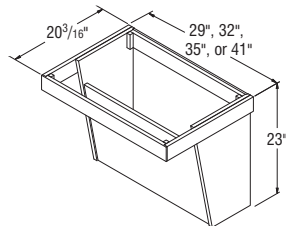
CUBES	STANDARD					ALL-PLYWOOD				
	Hammond Oak	Newberry Birch	Bartlett Thermofoil	Clarkson Birch	Albany Birch	Hammond Oak	Newberry Birch	Bartlett Thermofoil	Clarkson Birch	Albany Birch

NOTES ✓

- Recommended installation height of 32½" to allow sufficient toe clearance for Universal Design stand-alone vanity applications as a wall hanging unit.
- Opening Dimensions: Depth: 16¾"
Widths: VWS2923 = 24⅜"
VWS3223 = 27⅜"
VWS3523 = 30⅜"
VWS4123 = 36⅜"
- Cabinet construction will be All-plywood.

Vanity Wall Sink Cabinets, 23" High

VWS2923	10.7	414	414	414	414	414	414	414	414	414
VWS3223	11.7	432	432	432	432	432	432	432	432	432
VWS3523	12.8	447	447	447	447	447	447	447	447	447
VWS4123	14.8	480	480	480	480	480	480	480	480	480



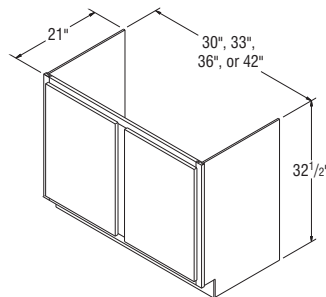
VWS2923-VWS4123

NOTES ✓

- Must be ordered with Vanity Wall Sink Cabinet (VWS). Not designed to be a stand-alone unit.
- Two plywood mending plates included to mount RVWS to VWS.
- Able to be removed for handicap accessible use.

Removable Vanity Wall Sink Cabinets, 32 ½" High, 21" Deep

RVWS3032	13.7	336	373	451	470	564	465	502	580	599	693
RVWS3332	15.0	340	378	457	475	570	469	507	586	604	699
RVWS3632	16.4	415	460	557	580	696	544	589	686	709	825
RVWS4232	19.0	459	511	618	642	771	588	640	747	771	900



RVWS3032-RVWS4232

COMMON STYLE

CUBES

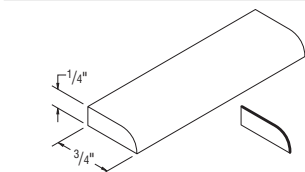
Oak Finish

Birch Finish

White Finish

Scribe Moulding

MSW8	(1 - 8' pc)	0.5	23	23	23
PSMSW8	(1 - 8' pc)	0.5	•	•	22

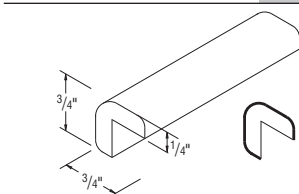

MSW8
PSMSW8

Outside Corner Moulding – 90°

MOCW8	(1 - 8' pc)	0.5	42	42	42
--------------	-------------	------------	----	----	----

NOTES ✓

- Use to create a finished look on ends of cabinet runs.



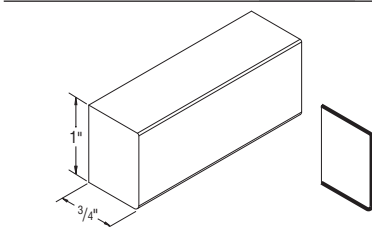
MOCW8

Trim Moulding

MTW8	(1 - 8' pc)	0.5	80	80	80
PSMTW8	(1 - 8' pc)	0.5	•	•	78

NOTES ✓

- Can be used to hide seams in stacked cabinet applications.


MTW8
PSMTW8

CUBES

COMMON STYLE

Oak Finish

Birch Finish

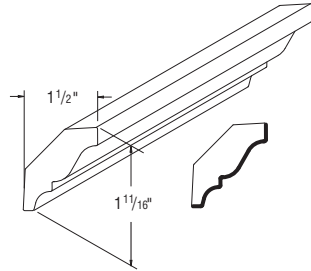
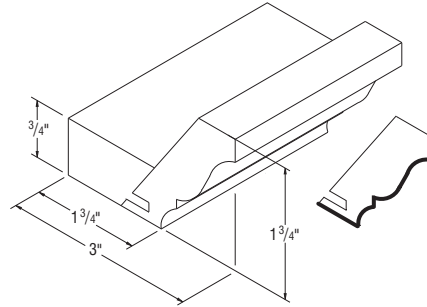
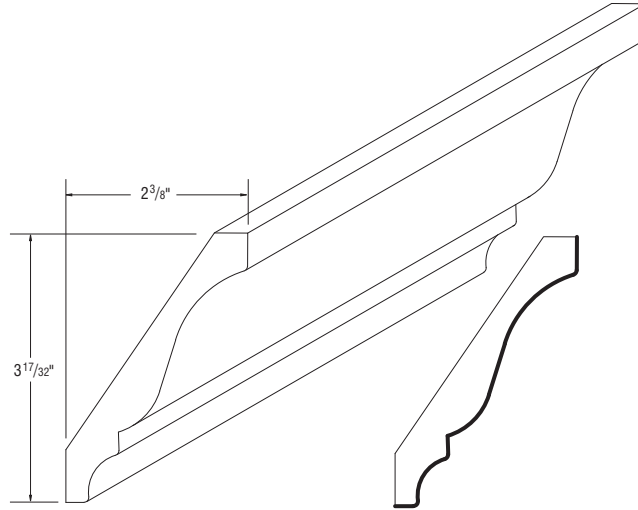
White Finish

NOTES

- Remember to order extra Mouldings when working with mitered corners.
- At minimum, leave a 3" reveal at the end of a run to allow Moulding and countertop ample clearance to return back to the wall.

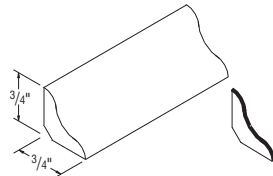
Crown Moulding

MCROWN8	(1 - 8' pc)	0.5	109	109	109
PSMCROWN8	(1 - 8' pc)	0.5	•	•	108
MFOLCR8	(1 - 8' pc)	1.0	158	158	158
PSMFOLCR8	(1 - 8' pc)	1.0	•	•	157
MTCROWN8	(1 - 8' pc)	0.5	262	262	262
PSMTCROWN8	(1 - 8' pc)	0.5	•	•	259


MCROWN8
PSMCROWN8

MFOLCR8 (Full overlay)
PSMFOLCR8

MTCROWN8 (Tall)
PSMTCROWN8

Cove Moulding

MCV8	(1 - 8' pc)	0.5	41	41	41
-------------	-------------	------------	----	----	----



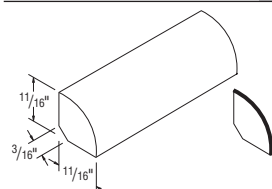
MCV8

Finished edges indicated by bold lines on side view drawings.

CUBES	COMMON STYLE		
	Oak Finish	Birch Finish	White Finish

Quarter Round Moulding

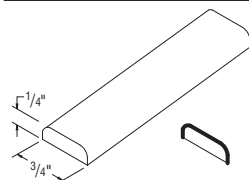
MQR8	(1 - 8' pc)	0.5	50	50	50
PSMQR8	(1 - 8' pc)	0.5	•	•	48



MQR8
PSMQR8

Batten Moulding

MBAT8	(1 - 8' pc)	0.5	30	30	30
--------------	-------------	------------	----	----	----



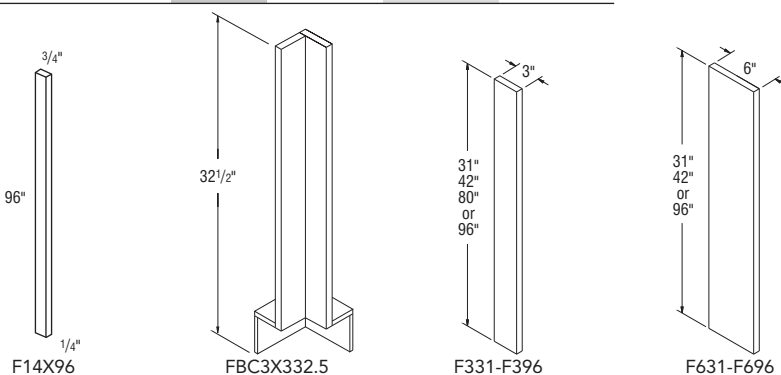
MBAT8

Fillers

F14X96	0.5	35	35	35
FBC3X332.5 (base)	0.8	82	82	82
F331 (base/wall)	0.2	41	41	41
F342 (wall)	0.2	48	48	48
F380 (tall)	0.4	83	83	83
F396 (tall)	0.5	146	146	146
F631 (base/wall)	0.2	76	76	76
F642 (wall)	0.2	104	104	104
F696 (tall)	0.5	215	215	215

NOTES

- All Fillers finished on front and two long edges.
- All Fillers are 3/4" thick.
- F14X96 is 1/4" thick. Designed to fill space between adjacent cabinets. Finished 1/4" on front and 3/4" all edges (backs are not finished).

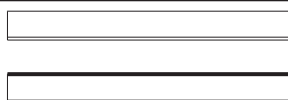


Valances Straight, 5" High

V549ST	0.3	86	86	86
V573ST	0.3	121	121	121

NOTES

- 3/4" thick.
- Valances not finished on back or ends.



V549ST-V573ST

Model	Length
V549ST	49"
V573ST	73"

Finished edges indicated by bold lines on side view drawings.

CUBES

COMMON STYLE

Oak Finish

Birch Finish

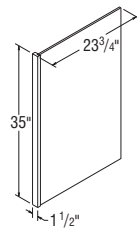
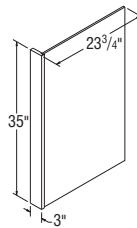
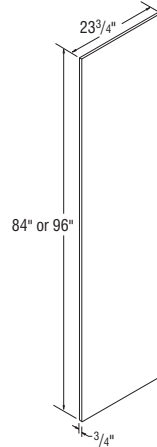
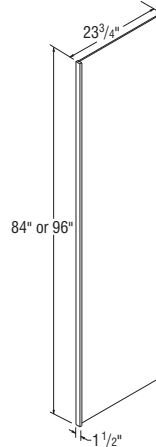
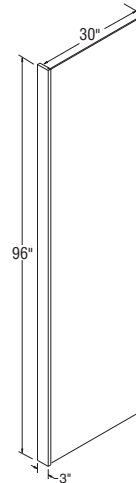
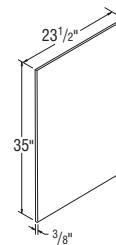
White Finish

Panels

NOTES

- Plywood may contain MDF or particleboard in its core in accordance with ANSI/HPVA HP-1 standards.

PEPR1.535	1.8	103	103	103
PEPR335	1.8	105	105	105
PEPRPLY1.535	1.8	135	135	135
PEPRPLY335	1.8	141	141	141
PREF2384	2.4	339	339	339
PREF2396	2.8	397	397	397
PREPRP1.584	3.1	326	326	326
PREPRP1.596	3.5	368	368	368
PREPR33096	7.0	564	564	564
PREPRPLY33096	7	677	677	677
PSFEP	1.0	66	66	66
PSFEPPLY	1.0	86	86	86


PEPR1.535
PEPRPLY1.535

PEPR335
PEPRPLY335

PREF2384
PREF2396

PREPRP1.584
PREPRP1.596

PREPR33096
PREPRPLY33096

PSFEP
PSFEPPLY

Panel	Description	Size (T x W x H)	Edge Finish	Color Side 1	Color Side 2	Finish
PEPR1.535	Particle Board $\frac{3}{8}$ " End Panel w/ $1\frac{1}{2}$ " Stile	$1\frac{1}{2}$ " x $23\frac{3}{4}$ " x 35"	Front Long	Exterior	Interior	Laminate
PEPR335	Particle Board $\frac{3}{8}$ " End Panel w/3" Stile	3" x $23\frac{3}{4}$ " x 35"	Front Long	Exterior	Interior	Laminate
PEPRPLY1.535	Plywood $\frac{3}{8}$ " End Panel w/ $1\frac{1}{2}$ " Stile	$1\frac{1}{2}$ " x $23\frac{3}{4}$ " x 35"	Front Long	Exterior	Interior	Laminate
PEPRPLY335	Plywood $\frac{3}{8}$ " End Panel w/3" Stile	3" x $23\frac{3}{4}$ " x 35"	Front Long	Exterior	Interior	Laminate
PREF2384	Particle Board Refrigerator End Panel	$\frac{3}{4}$ " x $23\frac{3}{4}$ " x 84"	1 Long	Exterior	Exterior	Veneer
PREF2396	Particle Board Refrigerator End Panel	$\frac{3}{4}$ " x $23\frac{3}{4}$ " x 96"	1 Long	Exterior	Exterior	Veneer
PREPRP1.584	Plywood $\frac{3}{8}$ " Refrigerator End Panel w/ $1\frac{1}{2}$ " Stile	$1\frac{1}{2}$ " x $23\frac{3}{4}$ " x 84"	Front Long	Exterior	Exterior	Laminate
PREPRP1.596	Plywood $\frac{3}{8}$ " Refrigerator End Panel w/ $1\frac{1}{2}$ " Stile	$1\frac{1}{2}$ " x $23\frac{3}{4}$ " x 96"	Front Long	Exterior	Exterior	Laminate
PREPR33096	Veneered Furniture Board $\frac{3}{4}$ " Refrigerator End Panel w/3" Stile	3" x 30" x 96"	Front Long	Exterior	Exterior	Veneer
PREPRPLY33096	Plywood $\frac{3}{4}$ " End Panel w/3" Stile	3" x 30" x 96"	Front Long	Exterior	Exterior	Veneer
PSFEP	Plywood Sink End Panel	$\frac{3}{8}$ " x $23\frac{1}{2}$ " x 35"	None	Exterior	Interior	Laminate
PSFEPPLY	Particle Board Sink End Panel	$\frac{3}{8}$ " x $23\frac{1}{2}$ " x 35"	None	Exterior	Interior	Laminate

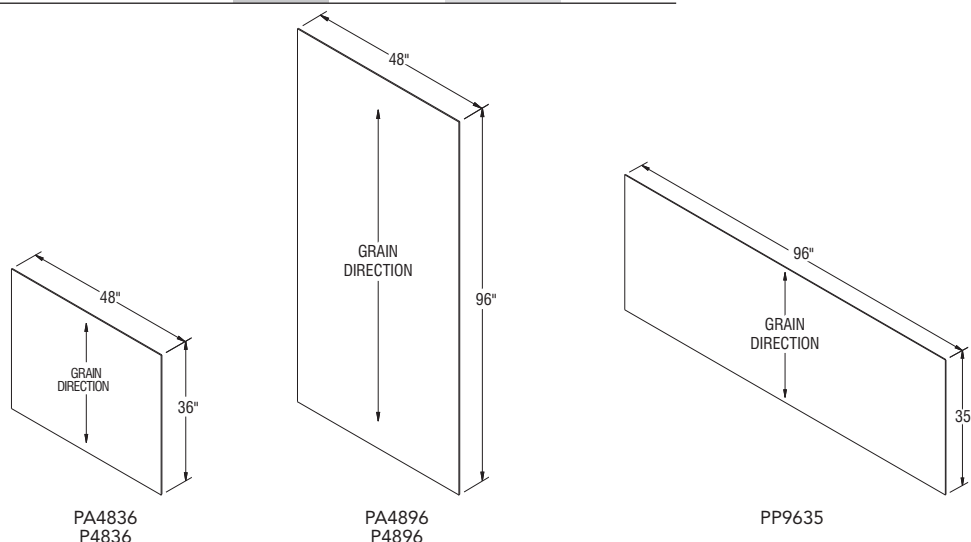
CUBES	COMMON STYLE		
	Oak Finish	Birch Finish	White Finish

Stock Panels

PA4836	1.1	85	85	85
PA4896	2.7	192	192	192
PP9635	2.0	394	394	•
P4836	1.1	170	170	170
P4896	2.7	405	405	405

NOTES ✓

- Plywood may contain MDF or particleboard in its core in accordance with ANSI/HPVA HP-1 standards.



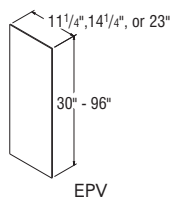
Panel	Description	Size (T x W x H)	Edge Finish	Color Side 1	Color Side 2	Finish
PA4836	Stock Panel - Aristex™ Laminate	1/4" x 48" x 36"	None	Exterior	Raw	Laminate
PA4896	Stock Panel - Aristex™ Laminate	1/4" x 48" x 96"	None	Exterior	Raw	Laminate
PP9635	Stock Panel - Veneer	3/16" x 96" x 35"	None	Exterior	Raw	Veneer
P4836	Stock Panel - Veneer	3/16" x 48" x 36"	None	Exterior	Raw	Veneer
P4896	Stock Panel - Veneer	3/16" x 48" x 96"	None	Exterior	Raw	Veneer

Veneer End Panels

EPV1130	(1/ctn.)	0.2	52	52	52
EPV1142	(1/ctn.)	0.3	69	69	69
EPV1442	(1/ctn.)	0.4	98	98	98
EPV2335	(1/ctn.)	0.5	101	101	101
EPV2384	(1/ctn.)	1.2	248	248	248
EPV2396	(1/ctn.)	1.4	280	280	280

NOTES ✓

- End Panels are shipped one per carton. Not sold in pairs.
- EPV1442 are sized for 15" deep cabinets.
- Plywood may contain MDF or particleboard in its core in accordance with ANSI/HPVA HP-1 standards.



Panel	Description	Size (T x W x H)	Edge Finish	Color Side 1	Color Side 2	Finish
EPV1130	Wall End Panel for 12" Depth	3/16" x 11 1/4" x 30"	None	Exterior	Raw	Veneer
EPV1142	Wall End Panel for 12" Depth	3/16" x 11 1/4" x 42"	None	Exterior	Raw	Veneer
EPV1442	Wall End Panel for 15" Depth	3/16" x 14 1/4" x 42"	None	Exterior	Raw	Veneer
EPV2335	Base End Panel	3/16" x 23" x 35"	None	Exterior	Raw	Veneer
EPV2384	Utility End Panel	3/16" x 23" x 84"	None	Exterior	Raw	Veneer
EPV2396	Utility End Panel	3/16" x 23" x 96"	None	Exterior	Raw	Veneer

CUBES

COMMON STYLE

Oak Finish

Birch Finish

White Finish

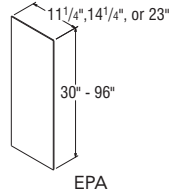
NOTES

- 1/4" thick panels with one-sided Aristext™ laminate on exterior (no edge finish).
- End Panels are shipped one per carton. Not sold in pairs.
- EPA1442 are sized for 15" deep cabinets.



Laminate End Panels

EPA1130	(1/ctn.)	0.2	50	50	50
EPA1142	(1/ctn.)	0.3	66	66	66
EPA1442	(1/ctn.)	0.4	92	92	92
EPA2335	(1/ctn.)	0.5	98	98	98
EPA2384	(1/ctn.)	1.2	198	198	198
EPA2396	(1/ctn.)	1.4	226	226	226



EPA

Panel	Description	Size (T x W x H)	Edge Finish	Color Side 1	Color Side 2	Finish
EPA1130	Wall End Panel for 12" Depth	1/4" x 11 1/4" x 30"	None	Exterior	Raw	Laminate
EPA1142	Wall End Panel for 12" Depth	1/4" x 11 1/4" x 42"	None	Exterior	Raw	Laminate
EPA1442	Wall End Panel for 15" Depth	1/4" x 14 1/4" x 42"	None	Exterior	Raw	Laminate
EPA2335	Base End Panel	1/4" x 23" x 35"	None	Exterior	Raw	Laminate
EPA2384	Utility End Panel	1/4" x 23" x 84"	None	Exterior	Raw	Laminate
EPA2396	Utility End Panel	1/4" x 23" x 96"	None	Exterior	Raw	Laminate

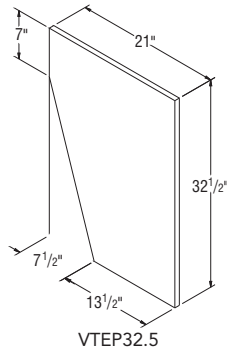
NOTES

- 3/4" thick.
- Veneer panel with front edgebanded and both sides finished.



Vanity Tapered End Panel, 32 1/2" High, 21" Deep

VTEP32.5	New	0.8	215	215	215
-----------------	------------	------------	-----	-----	-----



VTEP32.5

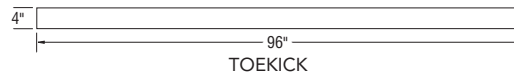
NOTES

- Plywood may contain MDF or particleboard in its core in accordance with ANSI/HPVA HP-1 standards.



Toekick

TOEKICK	(4 - 8' pc)	0.5	76	76	76
TOEKICKPLY	(4 - 8' pc)	0.5	100	100	100
TOEKICK8	(1 - 8' pc)	0.1	34	34	34
TOEKICKPLY8	(1 - 8' pc)	0.1	44	44	44



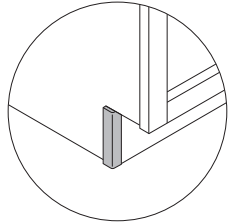
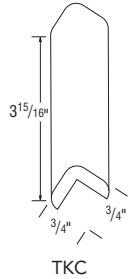
TOEKICK

Panel	Description	Size (T x W x H)	Edge Finish	Color Side 1	Color Side 2	Finish
TOEKICK	Aristext™ Toekick	1/4" x 4" x 96"	None	Exterior	Raw	Laminate
TOEKICKPLY	Plywood Toekick	1/4" x 4" x 96"	None	Exterior	Raw	Veneer
TOEKICK8	Aristext™ Toekick	1/4" x 4" x 96"	None	Exterior	Raw	Laminate
TOEKICKPLY8	Plywood Toekick	1/4" x 4" x 96"	None	Exterior	Raw	Veneer

CUBES	COMMON STYLE		
	Oak Finish	Birch Finish	White Finish

Toekick Cap

TKC	0.3	12	12	12
-----	-----	----	----	----



NOTES ✓

- TKC dimension: $\frac{3}{4}$ " x 4" x $\frac{3}{4}$ "
- Sold in pairs.

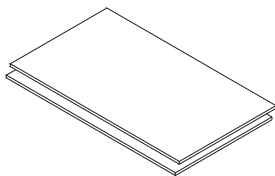
CUBES	Miscellaneous Style (#011)	Dimensions	Natural Maple Laminate	Plywood	Fits 12" Deep	Fits 24" Deep
-------	----------------------------	------------	------------------------	---------	---------------	---------------

Utility Shelf Kits

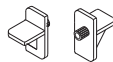
UKS15	0.6	63	13 $\frac{1}{2}$ " x 22 $\frac{1}{2}$ "	✓		✓
UKS18	1.2	71	16 $\frac{1}{2}$ " x 22 $\frac{1}{2}$ "	✓		✓
UKS24	1.5	88	22 $\frac{1}{2}$ " x 22 $\frac{1}{2}$ "	✓		✓
UKS30	0.2	105	28 $\frac{1}{2}$ " x 22 $\frac{1}{2}$ "	✓		✓
UKS1812	1.2	71	16 $\frac{1}{2}$ " x 10 $\frac{11}{32}$ "	✓	✓	
UKS15PL	0.6	97	13 $\frac{1}{2}$ " x 22 $\frac{1}{2}$ "	✓	✓	✓
UKS18PL	0.8	103	16 $\frac{1}{2}$ " x 22 $\frac{1}{2}$ "	✓	✓	✓
UKS24PL	1.2	133	22 $\frac{1}{2}$ " x 22 $\frac{1}{2}$ "	✓	✓	✓
UKS30PL	1.2	150	28 $\frac{1}{2}$ " x 22 $\frac{1}{2}$ "	✓	✓	✓
UKS1812PL	0.2	72	16 $\frac{1}{2}$ " x 10 $\frac{11}{32}$ "	✓	✓	✓

NOTES ✓

- Utility Shelf Kits contain two shelves and eight clips.
- Shelves are $\frac{3}{4}$ " thick.
- Maximum weight per square foot is 15 lbs.
- Utility Shelf Kits are natural maple laminate.
- Order under style #011.



Utility Shelf Kit Shelves



Utility Shelf Kit Clips

CUBES

Miscellaneous
Style (#011)

Dimensions

Natural Maple
Laminate

Thickness

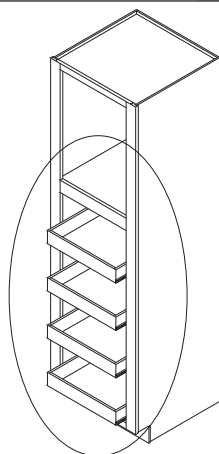
NOTES ✓

- Pantry Roll Tray Kits features 1/2" thick solid-wood front and furniture board sides and back.
- Pantry Roll Tray Kits contain four trays, eight suspension tracks, and eight bumper pads with installation screws.
- Maximum weight per square foot is 15 lbs.
- Pantry Roll Tray Kits cannot be used in any Utility cabinet 12" deep.
- Order under style #011.



Pantry Roll Tray Kit

UPK18	3.7	472	13 ¹ / ₁₆ " x 21 ¹³ / ₁₆ "	✓	3 ¹ / ₈ "
UPK24	5.1	472	19 ¹ / ₁₆ " x 21 ¹³ / ₁₆ "	✓	3 ¹ / ₈ "



Pantry Roll Tray Kit

CUBES

Miscellaneous
Style (#011)Recommended
Width of Face
Frame Opening

Trays

Track Slides

Mounting
Blocks2 1/2" Wood
Screws3/8" Wood
Screws

1/8" Spacers

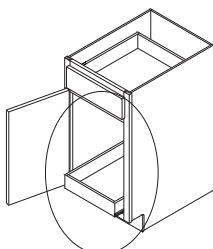
NOTES ✓

- Roll Tray Kits feature 1/2" thick solid-wood front and furniture board sides and back.
- Maximum weight per square foot is 15 lbs.
- All guides are white.
- Order under style #011.
- Bumper pads for field installation included.
- An additional Roll-out Tray can be installed above the Base cabinet half depth shelf.



Roll Tray Kits

TKIT15	0.5	84	12"	1	2	2	2	4	2
TKIT18	0.8	86	15"	1	2	2	2	4	2
TKIT21	0.9	90	18"	1	2	2	2	4	2
TKIT24	1.0	94	21"	1	2	2	2	4	2



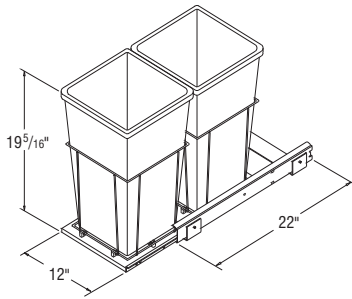
TKIT

Double Wastebasket Roll-out Kit

DWBR

3.2

444



DWBR

NOTES ✓

- White epoxy coated wire with Full extension guides.
- Includes two 27 quart Wastebaskets with wire storage compartment.
- Mounted on white melamine board and installs to floor of cabinet.
- Order under style #011.
- Installation of this accessory requires removing half depth shelf. See matrix below for installation recommendations.

Cabinet	Double Wastebasket Roll-out
B15	H*
B18	H
B21	H
B24	H
B30	H*
B33	H
B36	H
B39	H
B42	H
B45	H
B48	H
BC42	H
BC48	H
BC51	H
SB24	P

Cabinet	Double Wastebasket Roll-out
SB30	P
SB33	P
SB36	P
SB39	P
SB42	P
SB48	P
SF30	P
SF36	P
SFC36	P
SFC42	P
U15	I
U18	I
U24	I
U30	I

Cabinet	Double Wastebasket Roll-out
U1590	I
U1890	I
U2490	I
U3090	I
U1596	I
U1896	I
U2496	I
U3096	I

NOTES ✓

- H** Must remove shelf.
- I** Can be installed without modification to cabinet.
- P** Location of plumbing should be checked prior to installation of storage accessory.
- * Recommended.

Sink Tilt-out Trays

STOT30WH

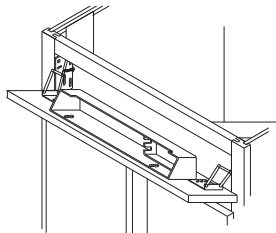
0.1

87

STOT36WH

0.2

87



STOT

NOTES ✓

- Pulls to add to the false front must be ordered separately.
- If STOTs are used on a full overlay style, it is recommended that a pull be used.
- STOT30WH & STOT36WH are for cabinets with one false front.
- Two white trays, 2 1/4" deep.
- Order under style #011.



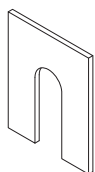
Model	Cabinet Width	Description
STOT30WH	30"	two 11 1/2" white trays, 2 hinges
STOT36WH	36"	two 14 1/2" white trays, 2 hinges

NOTES ✓

- For use to provide additional door adjustment in field.
- Designed to be placed between the face frame and hinge mounting plate.
- HNGSPCRF sold in pairs.
- HNGSPCRF50 sold in packs of 50.
- Use to decrease gap between door - insert behind screw on face frame.

Frame Spacers

HNGSPCRF	0.1	8
HNGSPCRF50	0.1	57



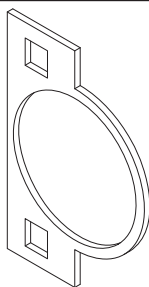
HNGSPCRF

NOTES ✓

- For use to provide additional door adjustment in field.
- Designed to be placed around the hinge cup and against the back of the door.
- HNGSPCRD sold in pairs.
- HNGSPCRD50 sold in packs of 50.
- Use to reduce appearance of a slight warp in a door - insert behind cup of hinge on door, opposite of warp.

Hinge Spacers

HNGSPCRD	0.1	8
HNGSPCRD50	0.1	57



HNGSPCRD

NOTES ✓

- For use in applications with cabinets installed at varying depths to prevent the door damage caused by opening into an adjacent cabinets.
- Restricts hinges to 86 degree opening capability.
- Not recommended for cabinets with roll trays specified in partial overlay styles.
- Sold in pairs.

Hinge Angle Restrictor Clips

HNGRESCLP	0.1	8
------------------	------------	----------



HNGSPCD

NOTES ✓

- Touch-up Kit contains one felt marker and one putty stick.
- For white and antique styles, Touch-up is only recommended for face frames and End Panels.

Touch-up

TUKIT	0.1	44
--------------	------------	-----------



Warped Door Policy

Contractor's Choice cabinetry is constructed to strict specifications, including the moisture content present in wood. When the moisture content is maintained at a constant level, Contractor's Choice is able to minimize the amount of expansion and contraction associated with natural wood. When a great amount of expansion and contraction occur, the result can be a warped door. By strictly controlling the amount of humidity present during manufacturing, Contractor's Choice is helping to ensure you receive a quality product.

Because wood is a natural product, each piece of wood exhibits its own unique color and grain variations. These differences give wood its genuine beauty. The wood's natural properties also determine how each individual piece will react to changing weather conditions. Therefore, eliminating warped doors is virtually impossible.

If you feel that you have a warped door, Contractor's Choice requires that you perform initial testing to determine the extent of the problem.

1. Remove the door from the cabinet and remove all decorative surface knobs or pulls and hinges.
2. Place the door on a completely flat surface, as determined by using a level, and alternately press on the opposite corners to observe if the door "rocks" or pulls away from the flat surface.
3. If you observe a gap between the door and flat surface, measure the distance to determine the amount of warpage.
 - A door must be warped at least $\frac{1}{4}$ " before it can be considered for replacement. When ordering a replacement by using Contractor's Choice Part Replacement Order Form, be sure to fill in the reason for proper replacement code as "06".
 - If the door is warped less than $\frac{1}{4}$ ", we recommend you allow a complete heating and cooling cycle (summer to winter) to allow the door to reach moisture equilibrium. Adding magnetic catches or roller catches will often correct minor problems.
4. If the door does not pull away from the flat surface, it is not warped. Most likely, there is a problem with the cabinet installation. When cabinets are not properly installed in a level or plumb position, they will become racked and will cause the door to appear warped. To check for a racked cabinet, place a level on one end rail. The bubble in the level will appear centered if the cabinet was properly installed in a level position. Now, place the level on the other end rail. Again, if the bubble appears centered the cabinet is properly installed in a level position. Any variations in the location of the bubble will indicate the cabinet was not properly installed. (A plumb bob will reveal the same information.)

Another proper installation check is to place the level in the top, and then bottom of the installed cabinet's face frame. Identify the bubble's position in both, top and bottom, locations of the face frame. The bubble's position will indicate if the cabinet was not properly installed.

Cabinet Care Suggestions

Cleaning Tip: Never use a dishcloth to clean or dry cabinet exteriors or interiors. Remnants of detergent or grease may be contained within the dishcloth.

Interiors: Contractor's Choice cabinet interiors are surfaced with Aristex™, a quality laminate material that resists scuffs, marks, and most common household spills.

1. To clean the interior surface, simply wipe with a damp cloth or sponge, then dry.
2. To remove food residue or grease, use the suds from any common dishwashing liquid and a damp cloth to wipe clean. Dry thoroughly.

CAUTION: If a spill occurs, it is important to clean up the spill and dry the surface immediately. A spill left unattended will soak through the Aristex™ and cause damage.

Exteriors — Wood Finish: Contractor's Choice wood exteriors are manufactured with a quality finish that protects the wood and brings out its full beauty. To maintain your cabinets' appearance, Contractor's Choice recommends cleaning them at least once a month.

1. Simply wipe the surface of your cabinets with a clean damp cloth, then dry.
2. To remove general soil or grease, use the suds from any common dishwashing liquid and a damp cloth to wipe clean. Dry thoroughly.
3. Excess moisture can damage any cabinet finish; areas near the sink, range, dishwasher, oven and baseboards are the most susceptible. Keep these surfaces dry.
4. Because Contractor's Choice uses a quality varnish on the finish, waxing your cabinets is not necessary. If waxing is preferred, use any furniture polish or lemon oil recommended for fine furniture. Be sure to completely wipe off the excess wax to avoid build-up.

CAUTION: Avoid using cleaners that contain bleach, ammonia or state on the label they have any type of abrasives. These cleaners can cause damage to your cabinet finish.

Exteriors — Laminate/Thermofoil: Some Contractor's Choice styles use doors and drawer fronts with a laminate or thermofoil finish. To clean this type of finish, Contractor's Choice recommends the same procedure described for wood exteriors.

Discontinued Product Policy

- A minimum of 60 days notice will be given to customers announcing the discontinuation of a product.
- Product will no longer be available to order after the discontinuation date. Only warranty orders will be considered. With warranty orders, Contractor's Choice will have the option to repair or replace a customer's defective product with the same discontinued product they originally purchased or with a current product that is similar in appearance.

Freight Policy

- If an entire order is no charge, Contractor's Choice will pay for standard ground freight.
- If an order contains a chargeable item, the cost of freight will be charged to the customer's invoice.
- If a customer requests an upgrade to a parcel shipment method, the customer will be charged the entire freight charge.

Returned Goods Policy

- All cabinets are manufactured according to the individual order and cannot be changed, cancelled, or returned once order has been scheduled.

Transportation Claims

- Please inspect merchandise at time of signing freight bill, and have the transportation company note any damage incurred in transit.

Disclosure

- Prices and specifications are subject to change without notice.

1 YEAR LIMITED WARRANTY (Residential Purchaser)

Contractor's Choice extends the following one year limited warranty ("Limited Warranty") to the first Residential Purchaser ("You" or "Your") of a cabinet or vanity manufactured by Us (each, a "Product"). This Limited Warranty is only applicable to Products sold to the first Residential Purchaser and used in the applications described below within the United States and Canada (excluding Quebec). Except as allowed below or by applicable law, You may not assign or transfer this Limited Warranty.

WHO IS A RESIDENTIAL PURCHASER? Under this Limited Warranty, a "**Residential Purchaser**" means any of the following:

- a person who purchases and installs the Product in a dwelling that is owned and used by that person as a primary or secondary home;
- any person or business such as a builder, contractor or developer that purchases and installs the Product in a newly constructed or remodeled dwelling that will be used by the initial owner/purchaser of that dwelling as a primary or secondary home. In such situation, this Limited Warranty may be assigned to the initial owner/purchaser who uses the dwelling as a primary or secondary home.

Under this Limited Warranty, a primary or secondary home does not include rental property. This Limited Warranty does not apply to landlords, leasing companies or other commercial purchasers.

WHAT DOES THIS LIMITED WARRANTY COVER? Subject to the exclusions and limitations set forth in this Limited Warranty, We warrant to You that each Product will be free from defects in material and workmanship, under normal use and maintenance, for the applicable warranty period stated below. This warranty gives You specific legal rights, and You may have other rights which vary from State to State or Province to Province.

WHAT IS THE WARRANTY PERIOD APPLICABLE TO RESIDENTIAL PURCHASERS? The warranty period for Your Product (excluding certain components discussed in the following paragraph) is for as long as You own the dwelling in which Your Product was originally installed and You use the dwelling as a primary or secondary home.

Notwithstanding the preceding paragraph, the warranty periods applicable to the following Product components that were not originally manufactured by Us are as follows:

- Vent Hoods, Blowers, and components: 1 year from the date of original purchase.
- Lighting, Electronic, and Powered components: 2 years from the date of original purchase.
- Decorative Hardware: 5 years from the date of original purchase.

DISCLAIMER OF OTHER WARRANTIES: THIS LIMITED WARRANTY IS OUR SOLE AND EXCLUSIVE WARRANTY WITH RESPECT TO THE PRODUCTS. ALL IMPLIED WARRANTIES ARE STRICTLY LIMITED TO THE DURATION OF THE LIMITED WARRANTY APPLICABLE TO THE PRODUCT AS STATED ABOVE, INCLUDING BUT NOT LIMITED TO, ANY WARRANTY OF MERCHANTABILITY OR OF FITNESS FOR A PARTICULAR PURPOSE. Some States do not allow limitations on how long an implied warranty lasts, so the above limitation may not apply to You.

WHAT THIS LIMITED WARRANTY DOES NOT COVER (EXCLUSIONS): The Limited Warranty does not apply to any Product:

- 1) installed or used outdoors;
- 2) used for purposes for which it is not designed or intended by Us;
- 3) which has been subjected to misuse, vandalism, abuse, negligence, accident, or unauthorized modifications;
- 4) which has been improperly stored (if the Product must be stored, it should be covered and stored in a humidity and temperature controlled environment, away from direct sunlight);
- 5) which has been improperly installed, cleaned, or maintained (for more information regarding the proper use and care of the Product, please consult the applicable Use and Care Instructions that accompanied the Product.
- 6) which has been subjected to improper temperature, moisture and/or humidity extremes (temperature outside the range of 50-85°F (10-29°C) and humidity outside the range of 30-55% are considered extreme);
- 7) damaged by fire, flood, acts of God, or other external causes beyond our control; and/or
- 8) exhibiting normal wear and tear.

In addition, natural woods may vary in color and characteristics and exhibit subtle changes as they age. For example, painted doors, drawer fronts, and face frames may eventually have visible cracking around the joint area, and cabinet colors may darken or lighten over time. Sunlight, smoke, and other environmental conditions may also affect the color and integrity of the Product's finish or appearance over time. These variations are considered to be the nature of the material in relation to their environmental exposure and are not covered under this Limited Warranty.

Certain household cleaners and other substances may also affect the color and integrity of the Product's finish or appearance over time. Do not use abrasive cleaners, cleaners that contain chlorine, acidic cleaners, scuffing sponges or steel wool because they may scratch and affect the color or finish of the Product. Any such effects on the color and/or integrity of the finish or appearance over time are not considered defects in material or workmanship and are not covered by this Limited Warranty.

SOLE AND EXCLUSIVE REMEDY: In the event of a defect in the workmanship or materials of a Product or Product component occurring during the warranty period described above, We will, at our option, repair or replace any defective Product or Product component; provided, if it is not commercially feasible to repair or replace a defective Product or Product component, We may refund the original price paid by You for the defective Product or Product component, or provide a credit towards a similar type of product sold by Us. The foregoing are Your sole and exclusive remedies for any Product defect or non-conformity. By way of example but not limitation, the following costs and expenses are not covered by this Limited Warranty: (1) labor costs for the original installation, removal, or reinstallation of the Product, or defective part thereof; (2) labor costs or material charges for the removal, reinstallation, repainting, refinishing or replacement of any other items or building materials which must be removed, replaced, reinstalled, or refinished in order to repair or replace the defective Product or component. For example, costs associated with the following will not be reimbursed: counters, sinks, tiles, flooring, accessories, appliances or plumbing fixtures. When a claim for warpage, joint separation or wood growth is submitted, We may, at our option and after inspection, defer action for up to 12 months to allow the Product to acclimate to the installed environment. Further, We reserve the right to modify or alter any Product design, specifications or materials without obligation to make similar changes to Products previously manufactured or sold by Us.

The repair or replacement remedies offered by Us under this Limited Warranty are contingent on the current Product offerings of styles and construction options within our Product line at the time a warranty claim is made by You. If a valid warranty claim is filed for an obsolete Product, We reserve the right, at our sole option, to honor its repair or replacement obligations under this Limited Warranty by either: (1) replacing the affected Product or component with a new Product or component of the same or approximate style or color from our current Product line or offerings; or (2) replacing the affected Product or component to achieve a uniform appearance with a similar or comparable product style or approximate color of the originally purchased style. If a Product or components are replaced or repaired, We cannot guarantee an exact match with the finish or appearance of other products or fixtures installed at Your dwelling. This is due to changes that may occur during the Products' natural aging process, affecting its color and/or grain.

LIMITATION OF LIABILITY: The remedies described above are Your sole and exclusive remedies and our entire liability for any breach of this Limited Warranty. Our total liability shall under no circumstances exceed the actual amount paid by You for the defective product. Further, We shall not under any circumstances be liable for any consequential, indirect, incidental, special or punitive damages or losses (including lost profits), even if this Limited Warranty is deemed to have failed of its essential purpose. Some States and Provinces do not allow the exclusion or limitation of incidental or consequential damages, so the above limitation or exclusion may not apply to You.

HOW DO YOU OBTAIN WARRANTY SERVICE? The Limited Warranty can be found in the documentation that accompanied Your Product. To obtain more information regarding the Product or to make a claim under this Limited Warranty, contact one of our authorized dealers or distributors, who will arrange for inspection of the Product. A dated sales receipt as proof of purchase is required to obtain benefits from this Limited Warranty. If you have difficulty obtaining assistance, please write to:

MasterBrand Cabinets
Attn: Customer Affairs
One MasterBrand Cabinet Drive
P.O. Box 420
Jasper, IN 47547-0420

Freight Policy

- If an entire order is no charge, Contractor's Choice will pay for standard ground freight.
- If an order contains a chargeable item, the cost of freight will be charged to the customer's invoice.
- If a customer requests an upgrade to a parcel shipment method, the customer will be charged the entire freight charge.

Returned Goods Policy

- Products of standard manufacture may not be returned for credit. Upon the loading and completion of the shipment, all materials are the responsibility of the customer.
- Installed or freight damaged cabinets may not be returned.

Transportation Claims

- The responsibility of Contractor's Choice ceases upon delivery of product in good order to transport companies and all product is shipped at consignee's risk.
- Please inspect merchandise at time of signing freight bill and have transportation company note any damage incurred in transit.



Styles, product availability and construction may vary slightly from those shown in this book due to material availability and/or design evolution. Specifications are subject to change without notice. Customer service is available if your design requires verification of product availability and specifications. Product photography and illustrations have been reproduced as accurately as printing technologies permit. To ensure highest satisfaction, we strongly recommend you view an actual sample for best color, wood grain and finish representation.

masterbrand.com
© 2019 MasterBrand Cabinets, Inc.