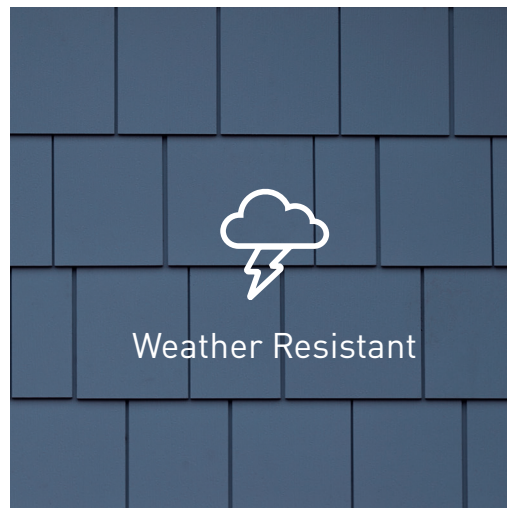


COLORFUSION™

PREFINISHED AZEK® TRIM AND SIDING





FULFILL YOUR EXTERIOR NEEDS

ColorFusion™ Prefinished Trim and Siding has it all: a consistently fine paint finish, a lifetime warranted substrate board, and PaintPro® technology, a proprietary process to help ensure top performance of both paint and board. With many trim and siding profiles—including specialty solutions like cornerboards and one-piece skirt boards—your next exterior job will go faster, perform longer, and look beautiful.



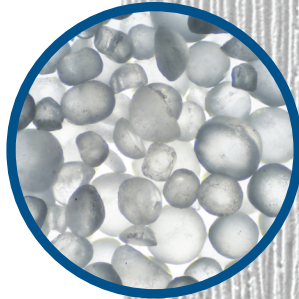
LEARN
MORE



ANATOMY OF THE BEST PREFINISHED SYSTEM: WHY YOU WANT PREFINISHED AZEK

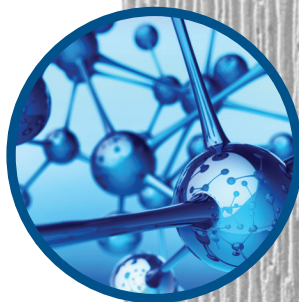
PVC SUBSTRATE

Wood's worst enemy is moisture. It leads to rot and warping and needs frequent painting for protection. Lightweight, easy-to-work-with PVC is impervious to water and always consistent—no knots, cupping, or irregularities.



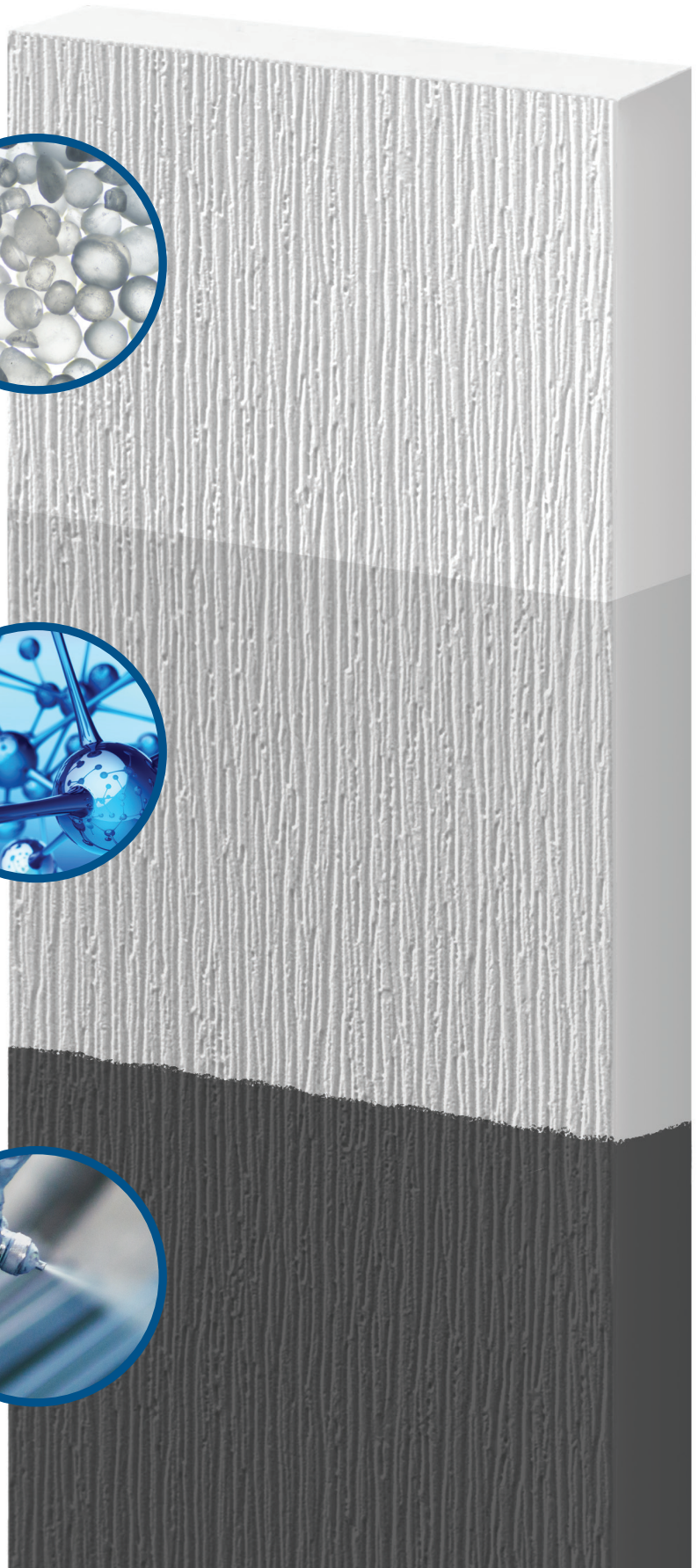
PAINTPRO® TECHNOLOGY

AZEK's proprietary factory treatment is like priming, but much more. AZEK products enhanced with PaintPro help paints adhere stronger and last longer than on ordinary, untreated PVC.



COLORFUSION™ PAINT

Lumbermen's uses DuraColor Factory Finish from PPG, formulated for PVC with solar-reflective pigments, applied at manufacturer-specified-mil thickness for looks and durability, and oven dried for consistency.



YOUR EXTERIOR DESERVES THE BEST PREFINISHED TRIM AND SIDING



START WITH THE BEST

AZEK Trim and Siding performs better than wood, without worries about rot, splintering, and warping. High-tech AZEK polymers are impervious to wood's worst enemy: moisture. When treated with proprietary PaintPro® Technology, AZEK products become the best paintable substrate. The PaintPro treatment on an AZEK board helps paint go on smoother, dry faster, adhere stronger, and last longer.



MAKE A STRONG FINISH

Lumbermen's uses DuraColor Factory Finish from PPG paint, tested and approved for superior performance with PaintPro technology. The ColorFusion automated application and climate-controlled, oven drying deliver an excellent finish in rich colors. Special paint formulations and solar-reflective pigments let the polymer boards perform at their best. The final finish is superior to anything painted in the field and has a 15-year Limited Warranty against peeling, flaking, blistering, chalking, or excessive fade.



BEHOLD THE BEAUTY

A home dressed in ColorFusion™ Prefinished Trim and Siding is going to be beautiful today and beautiful years from today. Installation is as easy as with wood, but the results are going to be longer-lasting and without the never-ending maintenance that wood demands. That's why AZEK offers a Lifetime Limited Warranty on the performance of their product. And a Class A Flame Spread rating adds peace of mind for anyone in fire zones.



FIND YOUR COLOR

COLORFUSION™ PREFINISHED PVC TRIM AND SIDING BY AZEK



PURE WHITE

NAVAJO WHITE

CAMELIZED PEARS

ROCK CLIFFS

ASHEN

PHOTO GRAY

ALDABRA

PATCHES

GRAY STONE

PHOENIX FOSSIL

COOL CHARCOAL

IN THE SHADOWS

BLUE BREEZE

DEEP WATER

CURFEW

11:59 BLACK

Touch-Ups: Use only supplied touch-up paint. Avoid painting large areas. A cotton swab works best for small areas. If more touch-up paint is needed, please contact your dealer.
Please Note: Colors are represented but limited by printing technology—request an actual color sample from your Lumbermen's or AZEK representative.

FIND YOUR PROFILE

GET WHAT YOU NEED FOR YOUR EXTERIOR TRIM AND SIDING

Lumbermen's prefinishes all of these AZEK Trim and Siding profiles that feature PaintPro® technology. Colors are a palette of Midwest favorites, available at retailers in the region. For a full listing of available AZEK profiles, visit AZEKExteriors.com.

SHINGLE SIDING		
5" Reveal Straight-Edge Shingle Panel	48" x 12" x 1/4"	098C2512048
6" Reveal Staggered-Edge Shingle Panel	48" x 15" x 1/4"	098C2515048
7" Reveal Straight-Edge Shingle Panel	48" x 16" x 1/4"	098C2516048



INSTALLATION
GUIDES



LEARN
MORE

PAINTPRO SHEET-SMOOTH OR WOODGRAIN				
Nominal	Actual	8'	10'	12'
3/4 x 4 Batten Board (PVC Sheets)	3/4 x 4	098C340408 / T	098C340410 / T	-
1/2 x 4 Batten Board (PVC Sheets)	1/2 x 4	098C12048 / T	098C120410 / T	098C120412 / T

PAINTPRO TRIM TWO-SIDED, REVERSIBLE FINISH		
Nominal	Actual	16'
4/4 x 2	3/4" x 1-1/2"	098C440216 / T
4/4 x 3	3/4" x 2-1/2"	098C440316 / T
4/4 x 4	3/4" x 3-1/2"	098C440416 / T
4/4 x 6	3/4" x 5-1/2"	098C440616 / T
4/4 x 8	3/4" x 7-1/4"	098C440816 / T
4/4 x 10	3/4" x 9-1/4"	098C441016 / T
4/4 x 12	3/4" x 11-1/4"	098C441216 / T
4/4 x 16	3/4" x 15-1/4"	098C441616 / T
5/4 x 4	1" x 3-1/2"	098C540416 / T
5/4 x 6	1" x 5-1/2"	098C540616 / T
5/4 x 8	1" x 7-1/4"	098C540816 / T
5/4 x 10	1" x 9-1/4"	098C541016 / T
5/4 x 12	1" x 11-1/4"	098C541216 / T

PAINTPRO CORNERBOARDS-SMOOTH OR WOODGRAIN		
Nominal	Actual	
5/4 x 4" x 4" x 20'	1" x 3 1/2" x 3 1/2" x 20'	098C540424
5/4 x 6" x 6" x 20'	1" x 5 1/2" x 5 1/2" x 20'	098C540624

AZEK CORTEX® FOR COLORFUSION TRIM-SMOOTH OR WOODGRAIN	
098C200250	2" Collated Cortex for AZEK PaintPro Trim 250 LN FT / BKT (375 - 2" screws, 400 plugs, 3 bits)
098C200750	2" Collated Cortex for AZEK PaintPro Trim 750 LN FT / BKT (1125 - 2" screws, 1200 plugs, 6 bits)
098C234250	2-3/4" Collated Cortex for AZEK PaintPro Trim 250 LN FT / BKT (375 - 2" screws, 400 plugs, 3 bits)
098C234750	2-3/4" Collated Cortex for AZEK PaintPro Trim 750 LN FT / BKT (1125 - 2" screws, 1200 plugs, 6 bits)

ONE-PIECE SKIRT BOARD - WOODGRAIN		
Nominal	Actual	
5/4 x 10 x 16'	1" x 9 1/4" x 16'	098C1016



Moisture
Resistant



Rot
Resistant



Insect
Resistant



Weather
Resistant

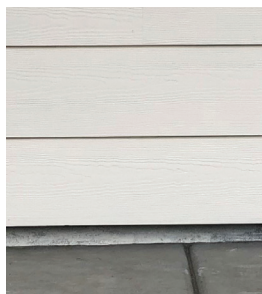


Durable, Less Long-
Term Maintenance



AZEK TRIM: INNOVATIVE SOLUTIONS

These AZEK Exteriors specialty trim profiles solve problems and also come prefinished from Lumbermen's.



PROBLEM

Wood and fiber cement are prone to damage from water absorption and are not approved for ground contact.

SOLUTION

One-piece skirt board is moisture-resistant and approved for ground contact.



PROBLEM

Standard corner assembly requires multiple boards, messy caulk, and extra time and labor to assemble.

SOLUTION

One-piece corner boards install quickly for a clean finish. Smooth seams, no caulk or paint required.



AN EMPLOYEE OWNED COMPANY

LUMBERMENS-INC.COM



AZEKEXTERIORS.COM

Lumbermen's
4433 Stafford Ave SW, Grand Rapids, MI