



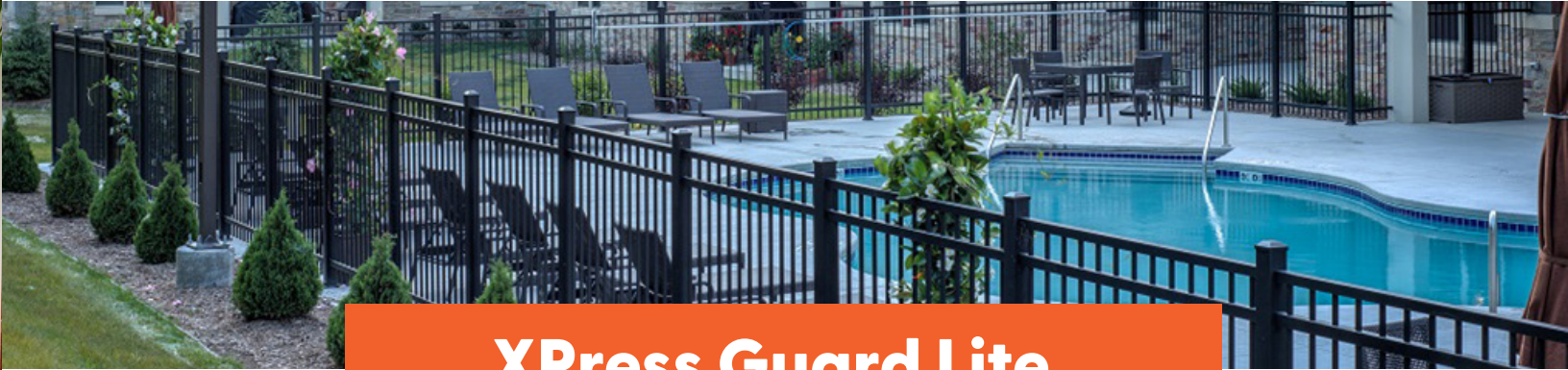
Lumbermen's
AN EMPLOYEE OWNED COMPANY



Why XPress Guard Fencing?

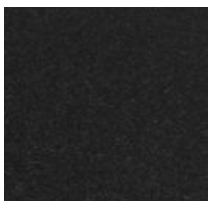
Amazing features for XPress Guard Fence Products

- **Low Maintenance** - Aluminum powder coat finish resists corrosion
- **Easily Customizable** - XPress your style with a variety of infills and color options.
- **Fence Height** - Our standard heights are 48", 54" and 60" but we have the capability to customize sections in a wide range of sizes as well.
- **Fence Width** - Our standard width for all products is 6'. Customizing is available upon request.
- **Gate Options** - Single gates are a maximum of 48" wide. Double-wide gates are also available. 48" and 54" heights.
- **Hardware** - Specialty hinge and gate hardware also available.
- **20-Year Limited Warranty**



XPress Guard Lite

Sleek and Stylish - XPress your style with the classic look of black fencing, combined with a couple of infill options.



Black



Standard Section



Standard Section
with Midrail



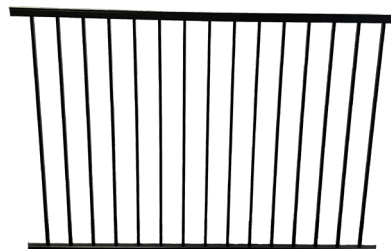
Lite Fence

6' wide | 60" tall with midrail
Pool code approved



Lite Fence

6' wide | 54" tall | midrail
Pool code approved



Lite Fence

6' wide | 48" tall
Pool code approved



XPress Guard Max

Elite Performance – The next step of an aluminum fence panel system that boasts customizable styles and a variety of features.



Rectangular Only



Open Mid-Rail

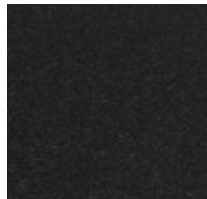


Mid-Rail with Balusters

Three Color Options – Choose from three different color options below for your fence project, or mix and match colors for a truly custom look.



White



Black



Dark Bronze



48" tall | 3" post



XPress Guard Max with Gate

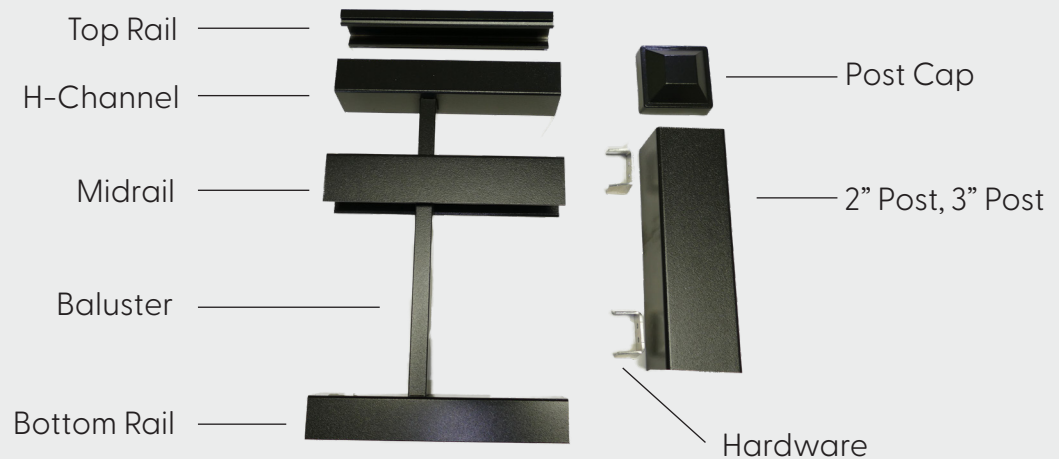
Fence Gate Options

Our single gates have a maximum width of 48", but can be customized in a range of sizes. Double-wide gates are also available in various sizes. Hardware offerings include specialty hinge and gate hardware.

Fence Anatomy

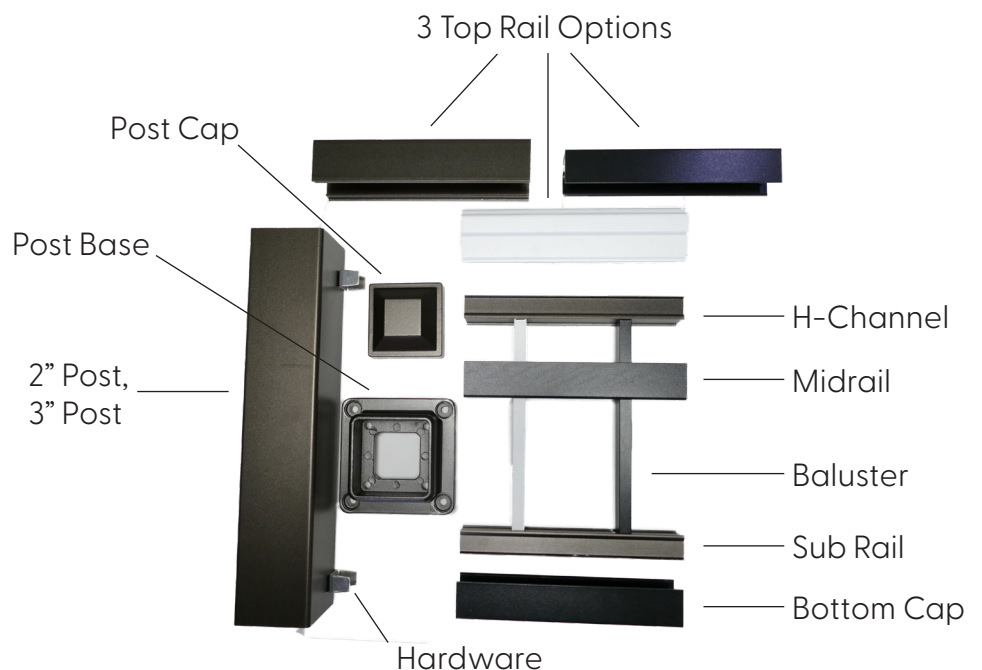
XPress Guard Lite Rail Components

- Black Only



XPress Guard Max Rail Components

- Black
- White
- Bronze





XPress Guard Fence Gate Hardware

Because you can't be everywhere all the time, and there is nothing more important than safety, XPress Guard Fence from Lumbermen's offers several gate latch and hardware options. All of the styles are designed to seamlessly fit into the fence and gate system to provide a higher level of security.

Pool Locks/Latches

MagnaLatch Top Pull - 17FML

- Magnetic child safety gate latch
- Key lockable



MagnaLatch Top Pull Alert - 17FMLA

- Magnetic child safety gate latch with audible and visual alarms
- Key lockable



Gate Locks/Latches



LokkLatch Regular - 17FLL01

- Lockable gravity latch for general purpose gates around homes and gardens
- Wafer keyed



LokkLatch Plus - 17FLLP01

- Privacy gate latch that locks and operates from both sides of the gate
- Semi-security lock cylinder

Gate Hardware



KwikFit Gate Hinge - 17FHINGEKWIK

Internal stainless steel closing spring, one-handed tension adjustment, self-closes gates up to 44 lbs.



TruClose Safety Gate Hinge - 17FHinge01

For pool and safety gates. Designed for high traffic area gates.

TruClose Heavy Duty Gate Hinge - 17FHINGEHD01

Safe and reliable - ideal for child safety gates.



24" Q-Bolt Drop Bolt - 17F24QBOLT

Provides an anchoring rod to secure one side of a double gate. Allows access to one or both sides of the gate.



AN EMPLOYEE OWNED COMPANY

**Employee Owned.
Relationship Powered.**

www.lumbermens-inc.com

