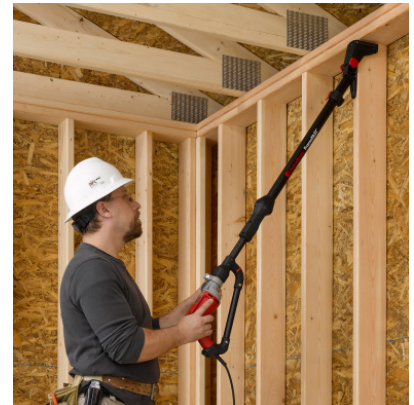


Products to Help You Frame Better. Increase Productivity. Meet Code.

FrameFAST – Truss to Top Plate Connection



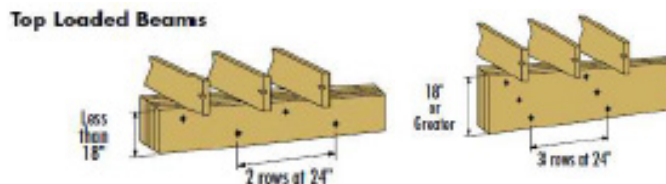
- The FrameFAST system consists of both the structural wood screw and the FrameFAST tool.
- Installation is up to 5x faster, significantly reducing labor.
- The 6" FrameFAST structural screw is code compliant to replace hurricane ties with its fully threaded design providing superior uplift and lateral resistance.
- The FrameFAST tool is specifically designed to install the FrameFAST fastener in a consistent and safe manner by eliminating the need for ladders or scaffolding.



FlatLOK – Multi-Ply LVL Connection



- FlatLOK is a multi-purpose structural wood screw for fastening multi-ply LVL, girder trusses and multi-ply lumber beams.
- FlatLOK is approved for single-sided installation making the job easier to complete both at ground level and for elevated applications. The flat head allows for easy finishing including drywall or trim.



NLB Connector – Non-Load Bearing Wall to Truss Connection



- The NLB Fastening System is designed for connecting the top plate of non-load bearing walls to trusses or joists above. It allows for vertical movement of the trusses while providing lateral stability to the wall.
- Eliminating the need for double top plates on non-load bearing walls provides meaningful material savings on the overall project.
- Connections can be made up to 10x faster, significantly reducing labor.

