



FLAT TRACK
BY LEATHERNECK HARDWARE



NOT YOUR ORDINARY BARN DOOR HARDWARE

EASY-TO-ORDER KITS

HERE'S WHAT SETS FLAT TRACK APART

- Made in the USA
- 12+ Finishes ♦ 36+ Hangers
- Single-slide ♦ Bi-part ♦ By-pass
- Easy-To-Order Kits ♦ Custom Projects
- Retail Stocking Kits ♦ Drop-ship Orders
- Soft Closers ♦ Handles ♦ Guides ♦ Full Accessories
- Solid 50 lb. ♦ 200 lb. ♦ 400 lb. ♦ 800 lb. Rated Systems
- One-Stop Shop ♦ Everything You Need to Complete the Job
- Rugged ♦ Dependable ♦ Superior Quality ♦ Lifetime Warranty*
- Fastest Lead Times ♦ Excellent Customer Service ♦ Industry Leader
- Residential ♦ Multi-family ♦ Hospitality ♦ Commercial and Industrial

WE OFFER THE BEST VALUE FOR YOUR MONEY!

At just \$100 over those imported systems, we offer premium quality, variety, customization, and all the accessories to complete the job.



Stocking Kits are available in all 12 finishes, with 402 Straight or 407 Top Mount hangers. Track lengths: 5' | 6' | 7' | 8'

MADE IN THE USA



402 Black

142 Premium Kit Includes

- 2 Hangers with Mounting Hardware
- Delrin Rollers
- 1 Track with 4 - 5 Spacers & Mounting Screws
(quantity varies by track size)
- 2 Door Stops with Cushions 2 Anti-jump Blocks
- 1 Bottom Fin Guide
- Easy-To-Follow Instructions

*For doors up to 400 lbs.



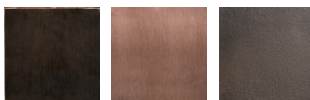
407 Brushed Nickel

OUR MOST POPULAR FINISHES, ACCESSORIES AND HANGERS

Finishes



Black Brushed Nickel Clear Coat



Antique Bronze New Penny Painted Bronze

Accessories



Close-Ease Pack

Cast Iron Pull and Flush Handle

Spacers

Slide Stop

Bi-Pass Bracket

Privi-Lock

Mounting Hardware

Hangers



Straight

Top Mount

Double Horseshoe

Teardrop

Fleur-de-Lis

Vined

Six Shooter

10 Spoke

The Close-Ease is a soft-closing mechanism to close doors silently and smoothly. The mounting design makes it easy to install. The Slide Stop enables your door to stop exactly where you need it to. *Lifetime warranty against defects in materials and workmanship (see full warranty).

**For more information or assistance with orders, please contact
Lumbermen's Entry Door - (866) 687-2332**